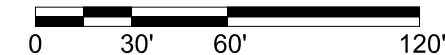


SITE PLAN

**identity**ARCHITECTS

111 Travis Street, Houston, Texas 77002  
www.identityarchitects.com 713.595.2150

Scale: 1" = 60'

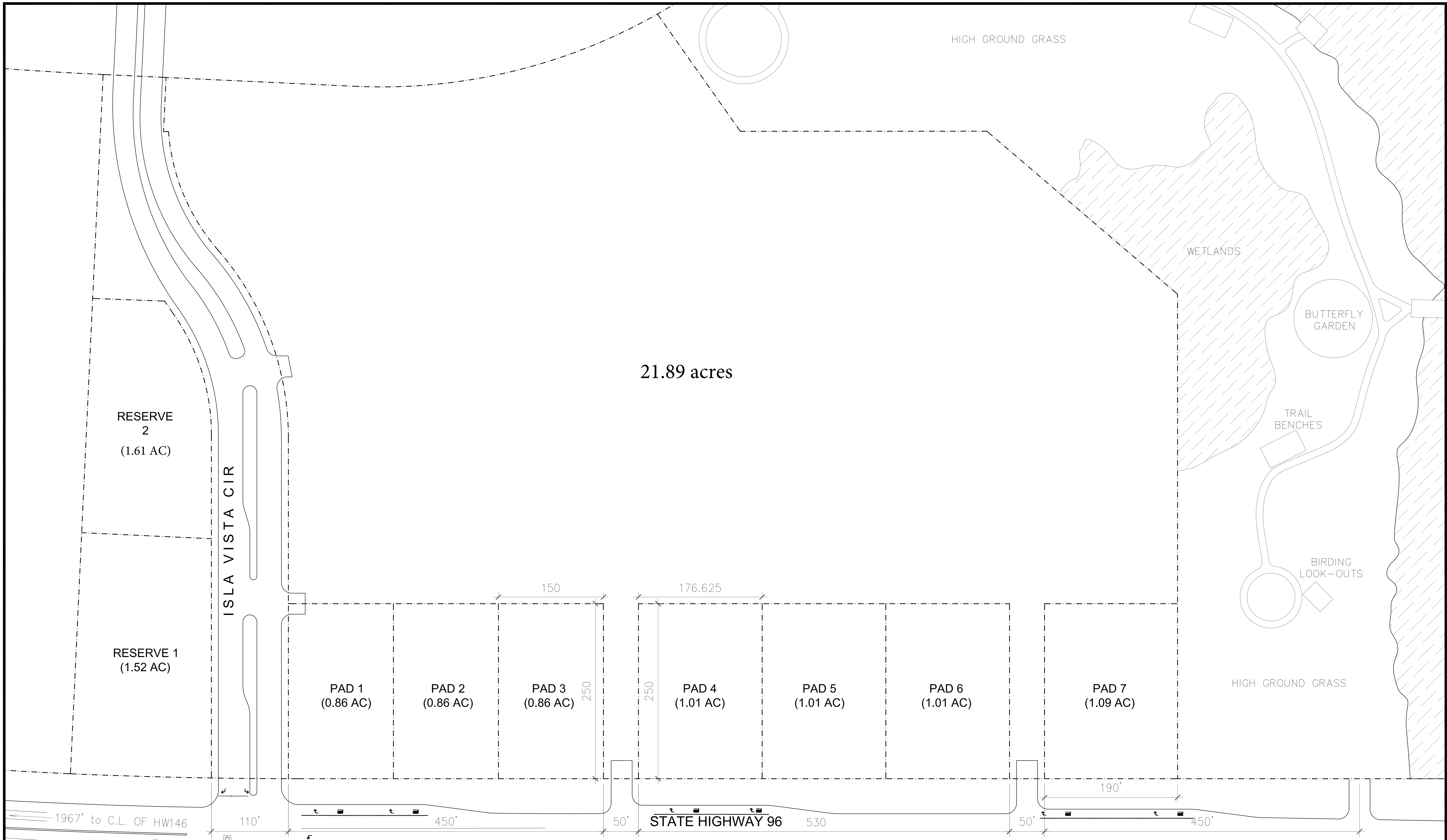


**MARBELLA 16 AC.**

April 20, 2018

MARBELLA PKWY @ HWY 96  
LEAGUE CITY, TX  
12047-01\_Site\_18.03.23

THIS DRAWING IS FOR PRESENTATION PURPOSES ONLY. ANY AND ALL FEATURES, MATTERS AND OTHER INFORMATION DEPICTED HEREON OR CONTAINED HEREIN ARE FOR ILLUSTRATIVE MARKETING PURPOSES ONLY, ARE SUBJECT TO MODIFICATION WITHOUT NOTICE, ARE NOT INTENDED TO BE RELIED UPON BY ANY PARTY AND ARE NOT INTENDED TO CONSTITUTE REPRESENTATIONS AND WARRANTIES AS TO THE SIZE AND NATURE OF IMPROVEMENTS TO BE CONSTRUCTED OR THAT ANY IMPROVEMENTS WILL BE CONSTRUCTED OR AS TO THE IDENTITY OR NATURE OF ANY OCCUPANTS THEREOF.



21.89 acres

RESERVE 2  
(1.61 AC)

RESERVE 1  
(1.52 AC)

ISLA VISTA CIR

PAD 1  
(0.86 AC)

PAD 2  
(0.86 AC)

PAD 3  
(0.86 AC)

PAD 4  
(1.01 AC)

PAD 5  
(1.01 AC)

PAD 6  
(1.01 AC)

PAD 7  
(1.09 AC)

HIGH GROUND GRASS

WETLANDS

BUTTERFLY GARDEN

TRAIL BENCHES

BIRDING LOOK-OUTS

STATE HIGHWAY 96

SITE PLAN

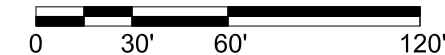
MARBELLA 28 AC. TOWN CENTER

Scale: 1" = 60'

August 9, 2017

ISLA VISTA CIR @ HWY 96  
LEAGUE CITY, TX  
12047-01\_Site\_17.08.09

**identity**ARCHITECTS



111 Travis Street, Houston, Texas 77002  
www.identityarchitects.com 713.595.2150

THIS DRAWING IS FOR PRESENTATION PURPOSES ONLY. ANY AND ALL FEATURES, MATTERS AND OTHER INFORMATION DEPICTED HEREON OR CONTAINED HEREIN ARE FOR ILLUSTRATIVE MARKETING PURPOSES ONLY, ARE SUBJECT TO MODIFICATION WITHOUT NOTICE, ARE NOT INTENDED TO BE RELIED UPON BY ANY PARTY AND ARE NOT INTENDED TO CONSTITUTE REPRESENTATIONS AND WARRANTIES AS TO THE SIZE AND NATURE OF IMPROVEMENTS TO BE CONSTRUCTED OR THAT ANY IMPROVEMENTS WILL BE CONSTRUCTED OR AS TO THE IDENTITY OR NATURE OF ANY OCCUPANTS THEREOF.