

# Shafer®

## Portable Gasoline Engine Hydraulic Power Unit

### Shafer Hydraulic Power Unit



**“GUARDIANS OF THE WORLD’S GAS PIPELINES”**



#### ADDRESS

13078 84th Ave, Surrey, BC  
Canada V3W 1L2

#### CONTACT

T (604) 594 3461  
F (604) 599 8494

#### EMAIL

[sales@automationwest.ca](mailto:sales@automationwest.ca)



# Shafer®

BULLETIN PGP-250

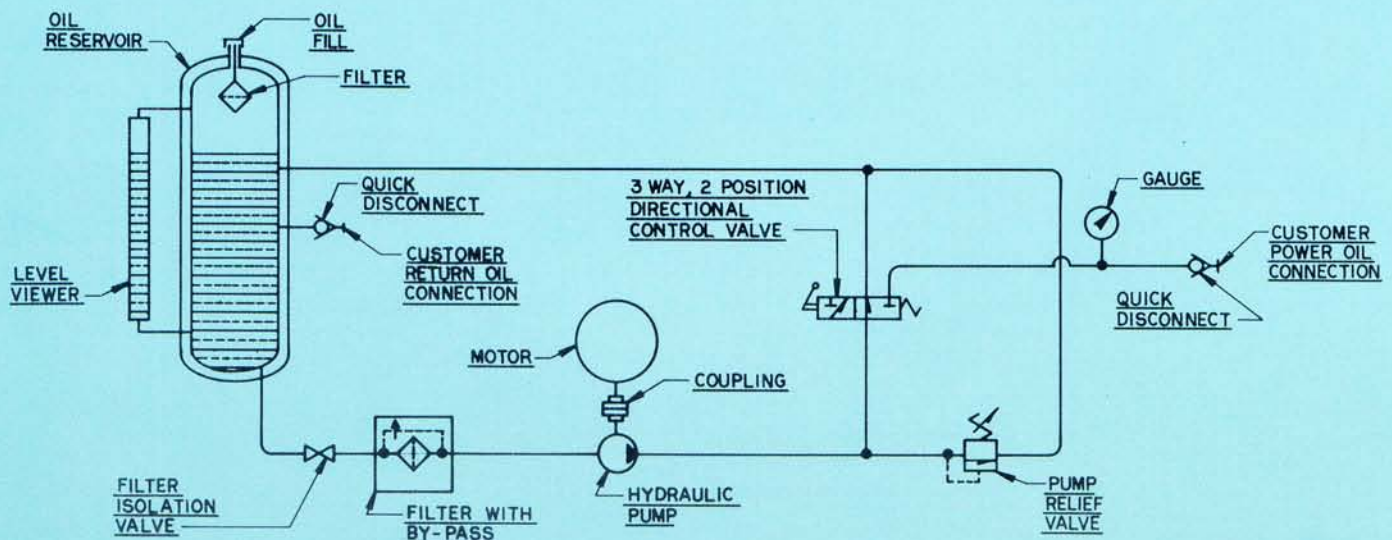
## PORTABLE GASOLINE ENGINE HYDRAULIC POWER UNIT

This portable hydraulic power unit provides reliable high pressure hydraulic fluid for powering valve operators or other hydraulic equipment.

The two man lift portable unit consists of a quality gasoline engine with spark arresting muffler, coupled to a high pressure hydraulic pump with reservoir and directional control valve.

The unit is connected to the valve operator by flexible hydraulic hose and quick disconnect couplings. Smooth, continual, high pressure fluid is used to stroke the valve operator to the desired position.

The unit is relatively lightweight and compact and is easily transported from valve site to valve site in the bed of any light duty utility vehicle.



# PORTABLE GASOLINE ENGINE HYDRAULIC POWER UNIT

BRIGGS AND STRATTON GASOLINE ENGINE  
DOWTY GEAR PUMP  
SYSTEM WORKING PRESSURE IS 2000 P.S.I.  
SYSTEM TEST PRESSURE IS 3000 P.S.I.  
TOTAL APPROXIMATE WEIGHT IS 177 LBS.

SYSTEM SHOWN HAS A DOWTY PUMP NO. OP3011  
(3.58 GPM @ 3600 RPM) COUPLED WITH A  
BRIGGS AND STRATTON GASOLINE ENGINE  
NO. 252412-0015 (11 HP. @ 3600 RPM).

OPTIONAL PUMPS AND MOTOR SIZES ARE  
LISTED BELOW:

DOWTY PUMP	GPM AT 3600 RPM	BRIGGS AND STRATTON ENGINE
OP3006	2.74	NO. 170402 7 HP.
OP3013	4.2	NO. 252412 11 HP.
OP3019	5.92	NO. 326431 16 HP.

