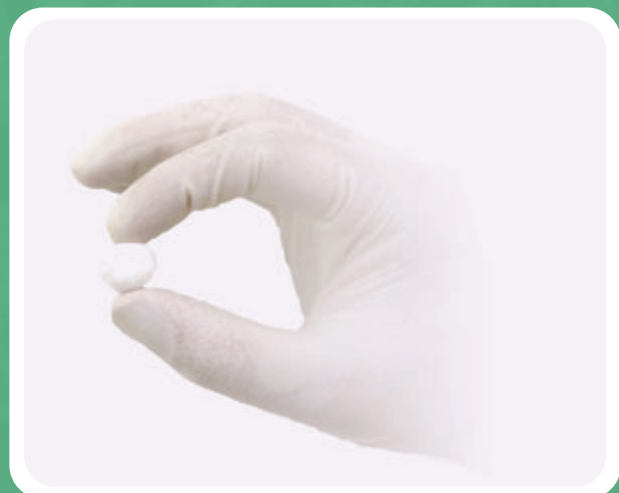


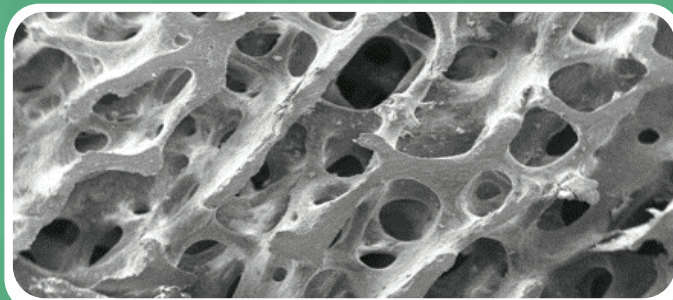
BonActiv™

Biomimetic Putty

Inside/Outside Approach To Bone Regeneration



Uniquely bioinspired.™



Scanning Electron Micrograph of BonActiv™

Composition—HA & Collagen

BonActiv™ is composed of hydroxyapatite and collagen in the same ratio as natural bone.

Structure / Matrix

BonActiv™ structure mimics natural bone, the result of a patented manufacturing process that overlays HA and mineralized collagen nano particles into a precise matrix.

Porosity

BonActiv™ porosity, by design, results from our patented nano-particle manufacturing process.

Absorption Rate

BonActiv™ absorption rate is similar to the body's natural bone regeneration rate (3-6 months).

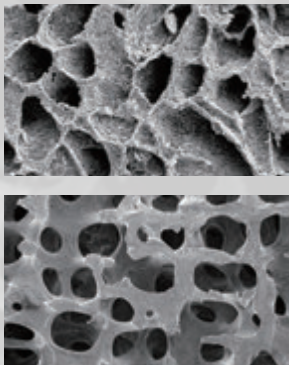
Osteo-Conductive / Osteo-Inductive

BonActiv™ matrix, porosity and structure display both osteo-conductive (HA) and osteo-inductive (collagen) characteristics, fundamental to natural bone regeneration.

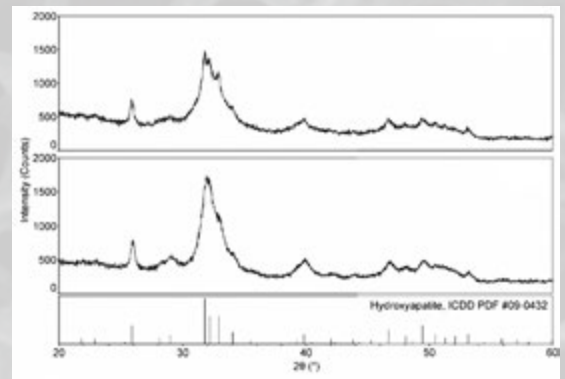
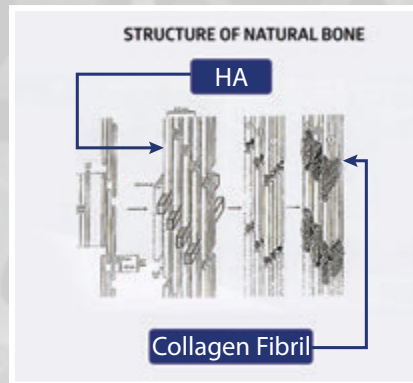
BonActiv™ Biomimetic Putty

Key Factors Impacting Bone Regeneration

- **Structure / Matrix**
- **Porosity**
- **Blood Supply**
- **Material / Composition**
- **Absorption**
- **Osteo-Conductive/Osteo-Inductive**



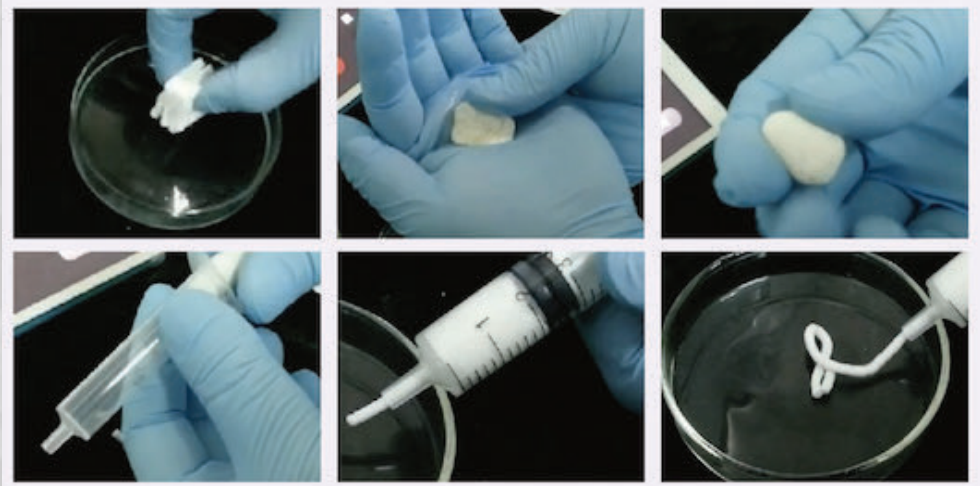
Scanning Electron Micrographs:
BonActiv™(top), bone (bottom)



XRay Diffraction Plots:
BonActiv™ (top), bone (bottom)

BonActiv™ Putty Preparation Recommendations

1. Soak the BonActiv™ putty in saline or blood for about 20 seconds.
2. Do not over soak; approx. 1:1 ratio.
3. Squeeze out the extra liquid like a sponge.
4. Form or shape directly to fit the bone defect void.
5. Alternatively, place into a syringe for injection as shown.



Catalogue Number

Description

P-1.5 (3.0)	BonActiv™ Putty, 3.0cc	25mm x 25mm x 5mm (X3)
P-5.0	BonActiv™ Putty, 5.0cc	25mm x 25mm x 5mm (X5)

223 Mt. Airy Road, Suite 100, Basking Ridge, NJ 07920

www.allgensus.com info@allgensus.com Tel. 908 758 1273 Fax 908 758 1201