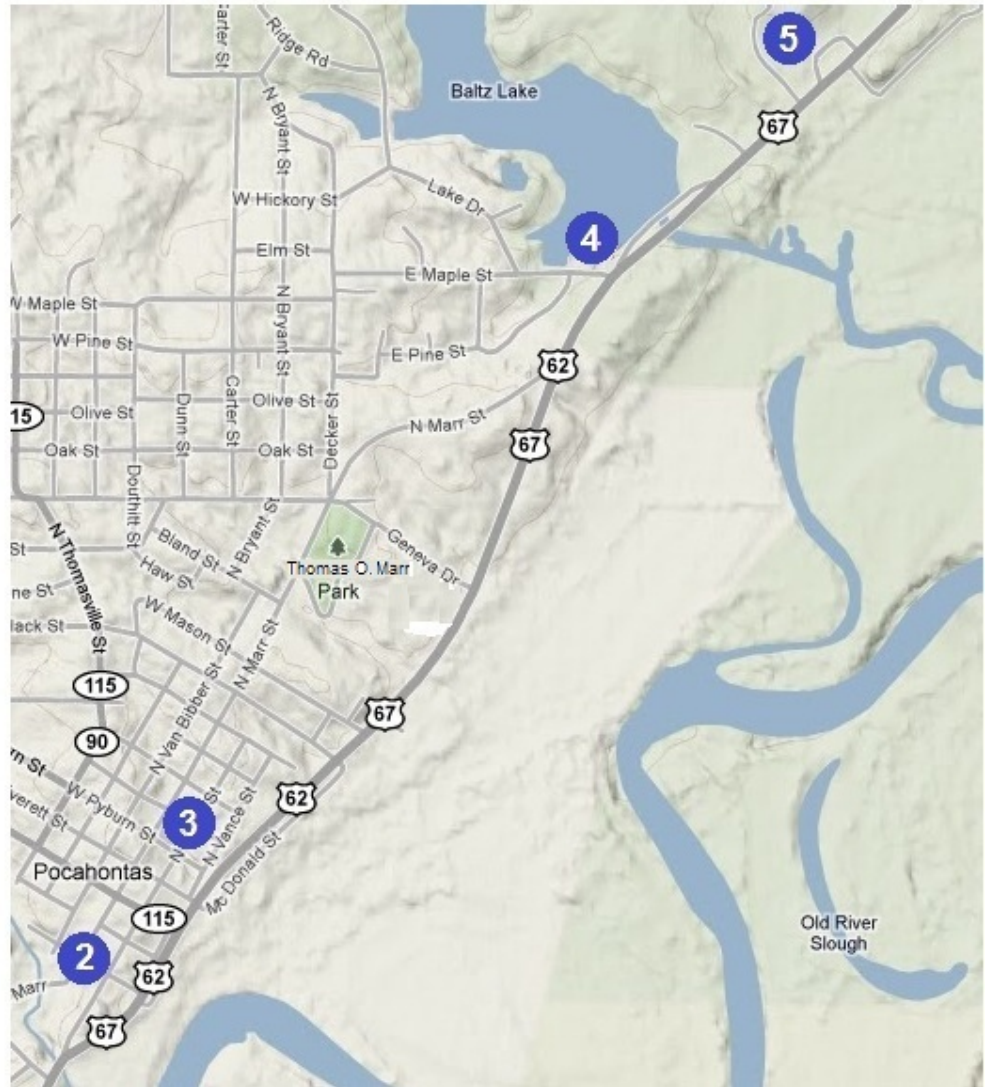


# Rock & Roll Highway 67

## in Randolph County, Arkansas



### KEY

1. Skylark Drive In ( Hwy 67 South):  
Johnny Cash, Roy Orbison, others
2. Rand Theatre ( corner of Marr and  
Rice Streets behind Courthouse):  
Bill Rice
3. Old Imperial Theatre (302 Marr  
Street): Hometown Legends
4. Billy Lee Riley (corner of Hwy 67  
and Maple Street)
5. KPOC (Hwy 67 North):  
Elvis Presley
6. Current River Beach (Hwy 67 N):  
Big Bands, Bill Rice, Booker T  
and others
7. Original Hwy 67 ( On Old Hwy 67 at  
intersection with Hwy 67 North)