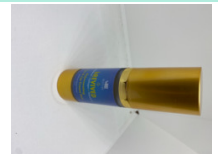


Certificate of Analysis

Report Date March 03, 2021

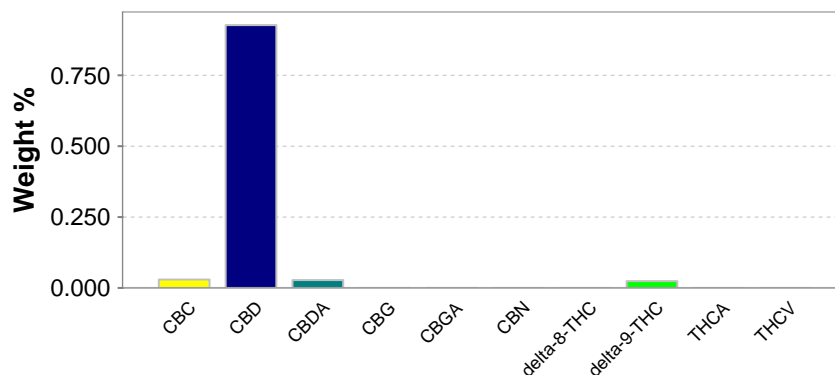
Company: bRISE, LLC
Project: bRISE, LLC
GEL SDG: 536266
Contact: Katryn Robinson
GEL Sample ID: 536266003
Matrix: Misc Solid
Client Sample ID: bREVIVED - Eye and Lip Cream Duo
Collect Date: 02-FEB-21 09:00
Receive Date: 01-MAR-21 12:00



HPLC Cannabinoids

| Analyte | Result | Weight % | MU % | Analysis Date | Batch | Dltn. | Method |
|--|--------------|------------|-----------|-----------------|---------|-------|----------------------|
| CBC | 0.297 mg/g | 0.0297 % | | 02-Mar-21 20:55 | 2098139 | 20 | GEL SOP GL-OA -E-078 |
| CBD | 9.27 mg/g | 0.927 % | (+/- 4) | | | | |
| CBDA | 0.278 mg/g | 0.0278 % | (+/- 2.5) | | | | |
| CBG | < 0.196 mg/g | < 0.0196 % | | | | | |
| CBGA | < 0.196 mg/g | < 0.0196 % | | | | | |
| CBN | < 0.196 mg/g | < 0.0196 % | | | | | |
| delta-8-THC | < 0.196 mg/g | < 0.0196 % | | | | | |
| delta-9-THC | 0.241 mg/g | 0.0241 % | (+/- 5) | | | | |
| THCA | < 0.196 mg/g | < 0.0196 % | (+/- 5) | | | | |
| THCV | < 0.196 mg/g | < 0.0196 % | | | | | |
| Total Potential CBD (CBD + CBDA x 0.877) | | 0.951 % | | 03-Mar-21 16:22 | 2098140 | 1 | GEL SOP GL-OA -E-078 |
| Total Potential THC (d9-THC + d9-THCA x 0.877) | | 0.0241 % | | | | | |

Cannabinoid Profile



Test results for NELAP or ISO 17025 accredited results are verified to meet the requirements of those standards, with any exceptions noted. The results reported relate only to the items tested and to the sample as received by the laboratory. These results may not be reproduced, except as full reports, without approval by the laboratory. Copies of GEL's accreditations and certifications can be found on our website at www.gel.com.

