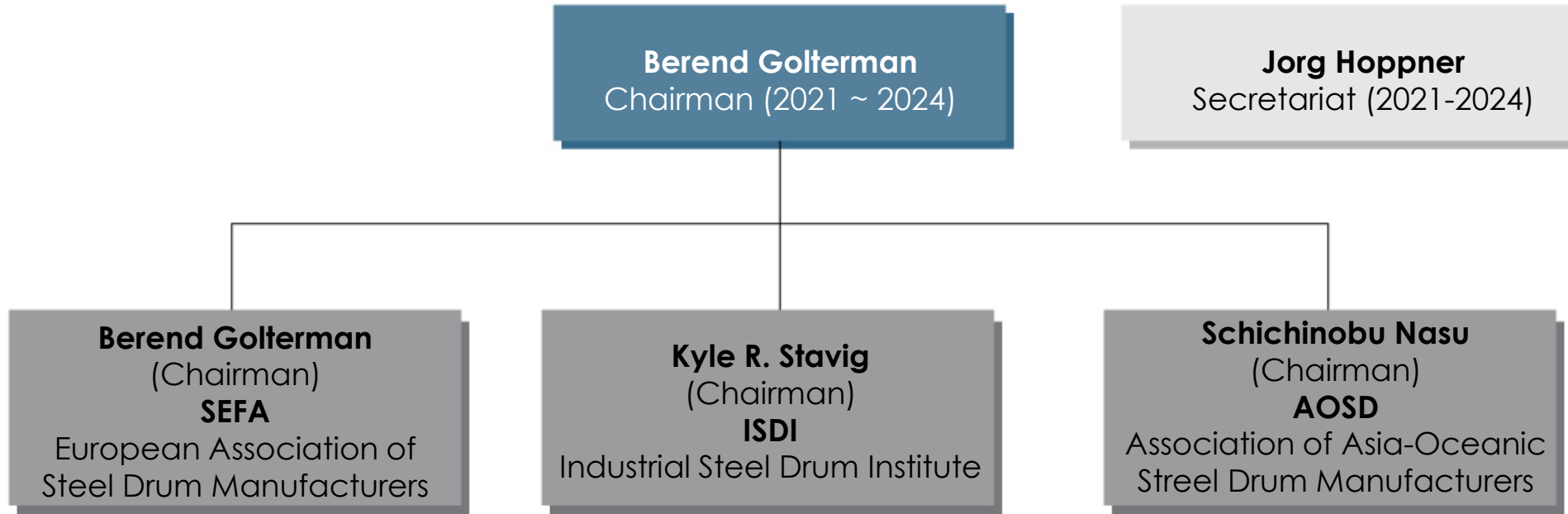


# International Confederation of Drum Manufacturers



# ICDM Responsibilities

	EUROPE, MIDDLE-EAST, AFRICA		THE AMERICAS		JAPAN, ASIA-OCEANIC	
<b>ICDM Board Members</b>	Berend Golterman <i>Chairman, SEFA</i>	Domenico Rinaldini <i>Vice Chairman, SEFA</i>	Kyle R. Stavig <i>Chairman, ISDI</i>	Gaylord Benner <i>Vice Chairman, ISDI</i>	Schichinobu Nasu <i>Chairman, JSDA &amp; AOSD</i>	Kihyung Ryu <i>Vice Chairman, AOSD</i>
<b>ICDM Representatives to UN-Related Issues</b>	<b>Nominated to UN</b> Jorg Hoppner <i>Sec. Gen. SEFA</i>	<b>Deputy</b> Niko Tessin <i>Sec. Gen. SEFA</i>	<b>Deputy</b> Susan Nauman <i>Ex. Dir. ISDI</i>	<b>Deputy</b> Chris Lind <i>Alternative</i>	<b>Deputy</b> Nick Sakamoto <i>Sec. Gen. AOSD &amp; ICDM</i>	
<b>ICDM Legal Counsel</b>			Glenn Wicks <i>Legal Counsel, ISDI</i>		Toshiaki Tada <i>Legal Counsel, JSDA</i>	
<b>ICDM Website</b>			Susan Nauman <i>Ex. Dir., ISDI</i>			
<b>Association Executives</b>	<b>Jorg Hoppner</b> <i>Sec. Gen., SEFA</i>	<b>Niko Tessin</b> <i>Sec. Gen. SEFA</i>	Susan Nauman <i>Ex. Dir., ISDI</i>		Nick Sakamoto <i>Sec. Gen., AOSD &amp; Ex. Dir./Sec. Gen., JSDA</i>	
<b>General Affairs</b>	Domenico Rinaldi <i>Vice Chairman, SEFA</i> <i>WG Marketing &amp; Steel</i>		Kyle R. Stavig <i>Chairman, ISDI</i> <i>Marketing WG</i>		Shinji Murakami <i>Chairman, JSDA</i> <i>General Planning &amp; Statistics Committee</i>	
<b>Technical Affairs</b>	Berend Golterman <i>Chairman, SEFA</i> <i>WG Regulatory &amp; Technical</i>		Chris Lind <i>Chairman, ISDI</i> <i>Technical Projects Committee</i>		Masanori Shimada <i>Chairman, JSDA</i> <i>Technical Committee</i>	