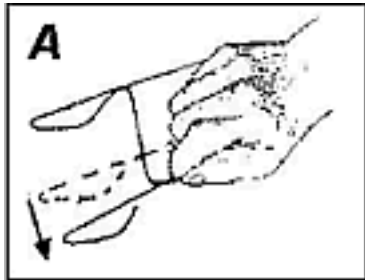


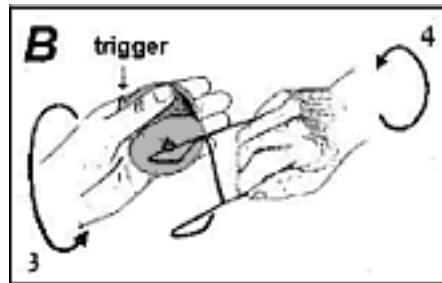
# Rollerhook Operating Instructions

General Data: Rollerhook max. weight - 10kg. The spool is good for 3 seasons.

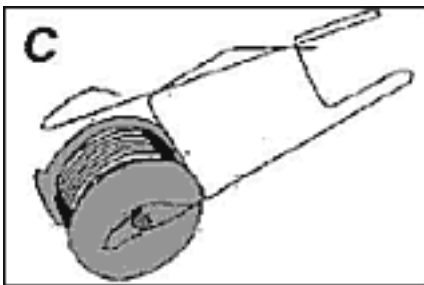
1. Connecting the spool to the metal part:



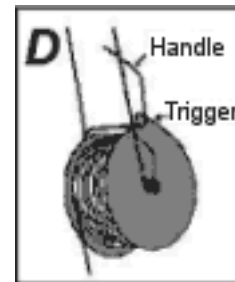
Hold metal part as shown in the figure.



Make sure that the trigger is facing up. Turn spool and metal part at the same time, as illustrated by arrows #3 and #4.



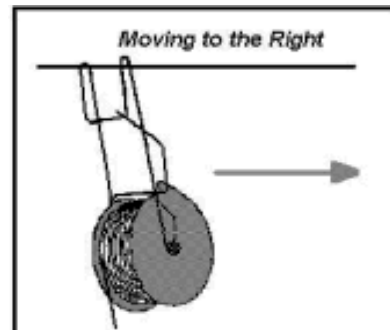
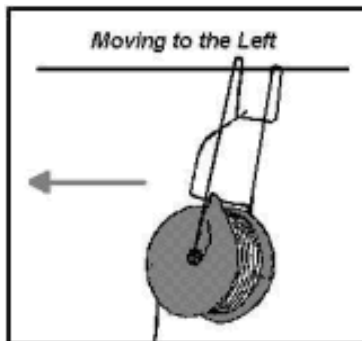
Attach the remaining ring to axle on the side of the trigger.



Make sure that the "trigger" is on the same side as the metal release handle.

2. Assembling the Rollerhook to the greenhouse cable:

**Important:** Make sure that the release handle faces the direction in which the Rollerhook will be moved.



3. Release string down to the base of the plant.

4. Lowering the plant:

- Important: Secure the plant with one hand.
- With the other hand, press the release handle to release string and tilt in the direction of the movement.
- Before finishing lowering, make sure that there is tension to prevent damage to plant..

Hydro-Gardens  
PO Box 25845  
Colorado Springs, CO. 80936-5845  
888-693-0578  
hgi@hydro-gardens.com  
www.hydro-gardens.com