

THRUPUT

4K x 2K Colour LCD Monitor GF VT 16 - 85"

Second generation primary control monitor supports multiple inputs, rendered on an 8-megapixel screen, for the highest quality and flexibility in data display.

- 3840 x 2160 resolution.
- 60 Hz zero latency.
- Anti-reflective.
- 500 cd/m² brightness.
- 3000:1 contrast ratio.
- Pure White LED backlight.
- Ultra low heat and power.

New in Version C:

- Instant channel change - Main to Backup.
- On board recording port - Exactly what the controller sees.



Perfect rendering

The Thruput GF VT 16 2G-85 displays 8 megapixels across its 85" screen with a pixel pitch of 0.4875 mm.

Using one screen instead of several, the user's eye and head movements are reduced and viewing comfort is increased:

- Without obtrusive bezels, all relevant data is concentrated within the optimum field of view.
- All pixels the same size.
- Seamless boundaries between sources.

Wide Viewing Angles

- Wide viewing angles of 176° x 176°.
- Minimal colour shift, even at acute angles.

New possibilities

The large size and high resolution creates new possibilities for information display.

- View one 4K x 2K image across the entire screen.
- Combine videos to view several channels of information on one screen.



Pure colour brightness control

Brightness is controlled by Thruput's pure colour control technology, making it ideal for any Operations Room:

- Displayed colours are perfect at all brightness settings.
- Pure White LED Backlight.
- Maintain colour accuracy and contrast at all brightness settings.
- Uniform brightness across the screen.

A safe and green solution

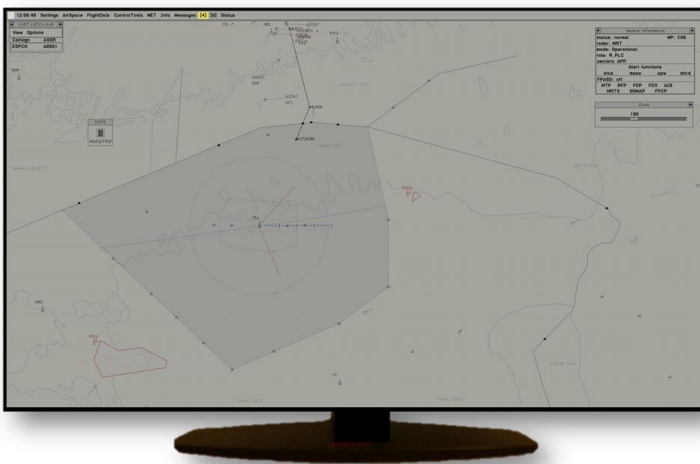
The monitor does not use any hazardous materials, and is fully RoHS compliant.

- Low power consumption.
- The LED backlights are mercury free.
- Up to 5 year warranty, 24/7 continuous operation.

Life cycle benefits

Greatly reduced complexity at the working position, a single monitor with optimum human factors will be:

- Cheaper to install and run than several smaller monitors.
- Less heat in the operations room.
- Less tiring for the user, with potential improvements to staff health and well-being, that may also reduce fatigue related errors.



Specification

Version C

Inputs	2 off DP 1.2 (60 Hz) 2 off HDMI 2.0 (60 Hz)	
Outputs	DP 1.2 Record 3.5 mm Audio jack RJ45 Remote control and monitoring	
Modes	KVM	Fast video switching Supports USB/PS2 switches
	Single	Full screen
	Dual	Top and bottom
		Left and right
Quad	One in each quadrant	
Resolution	3840 x 2160	
Pixel Pitch	0.4875 x 0.4875 mm	
Brightness	500 cd/m ²	
Contrast	3000 : 1	
Colour	32 bit colour	
Surface	Anti-glare and anti-reflective	
Power	Universal input voltage, worldwide use. Typically below 40W (normal operation). Main + Optional redundant PSU's.	
Noise	0 dB (silent operation)	
Size	190.6 x 108.7 x 8 cm	
Weight	56 Kg	
Mounting	VESA 500 x 400 mm centres	
MTBF	87,000 hours (25% brightness)	
Backlight	LED	
Update	60 Hz, zero latency (DP)	
Compliance	<ul style="list-style-type: none"> • Human Factors Criteria for Displays: A Human Factors Design Standard (FAA DOT/FAA/TC-07/11). • CE, FCC and ROHS. 	
Manage	TELNET, SNMP, DDC/CI.	
Options	Power	Redundant Power Supply
	Record	Sentinel DP 1.2 recorder
	Extend	Sentinel KVMX extender
	Install	Desk top stand

Thruput Limited operates a policy of continuous improvement and information in this document is subject to change without notice.

Page 2 of 2

Ref: GF VT 16-85 CD DN 1699-0001 V 2.3