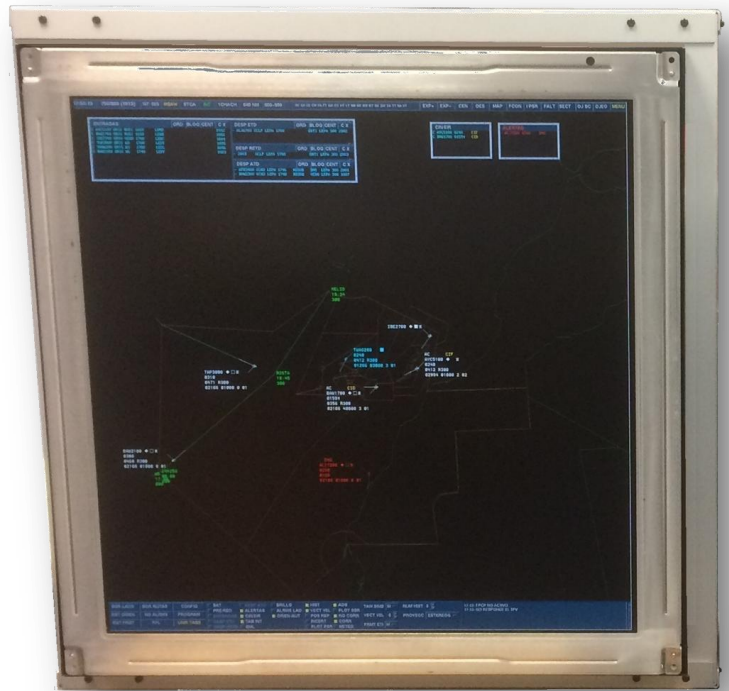


# THRUPUT

## Sony DDM Replacement GF VT 03 BA

*Form, fit and function replacement for all models of the Sony DDM, providing a high reliability 2K x 2K, primary control monitor.*



- *Plug and play replacement for all versions of Sony DDM-2800.*
- *Restores original colours, contrast and brightness.*
- *Reduces noise to zero dB.*
- *Reduces power by over 80% (80 W vs 450 W).*

### **Perfect rendering**

The Thruput GF VT 03 displays 4 megapixels across its 28" screen. This makes for a perfect pixel pitch of 100 dots per inch (the same as the Sony DDM) so text and symbols are crisp and fully compliant with FAA standards.

### **Simplicity**

- No software required.
- Plug and play solution for Sony DDM.
- Provides Sony DDM mounts and fixings.
- Ultra high reliability.
- Silent operation.



### Pure colour brightness control

Brightness is controlled by Thruput's pure colour control technology, making it ideal for any Operations Room:

- Displayed colours are perfect at all brightness settings.
- Pure White Backlight.
- Maintains colour accuracy and contrast at all brightness settings.
- Uniform brightness across the screen.

### Safety

Thruput True-pixel graphics technology provides perfect pixel processing:

- Low temperature operation.
- No on-screen display or pixilation engine.
- Directly maps input pixel to LCD pixel.

### Green solution

The GF VT 03 is a green solution:

- Does not use any hazardous materials.
- Fully RoHS compliant.
- Low power consumption.

### Hand held Controller

Setting up and calibration is straightforward, using the optional GF VT 03 - HHC Hand Held

### Specification

|                        |   |   |
|------------------------|---|---|
| Horizontal resolution  | pixels  | 2048  |
| Vertical resolution    | pixels  | 2048  |
| Horizontal screen size | mm  | 504   |
| Vertical screen size   | mm  | 504   |
| Diagonal               | inches  | 28  |
| Luminance              | Cd/m <sup>2</sup>   | 225   |
| Contrast ratio         |   | 400:1   |
| Input Channel options  | D   | DVI   |
|                        | A1  | DVI   |
|                        | A2  | DDM   |
| Power                  | Universal mains   |   |
| Configuration          | Sony DDM form fit and function compatible, VESA or custom panel |   |
| Noise                  | 0 dB (silent operation)   |   |
| Compliance             | CE, FCC and ROHS  |   |
| Options                | Hand Held Controller  | GF VT 03 - HHC                                      |
|                        | Protection  | Optical Over Glass protection for LCD: GF VT 03-OOG |



Thruput Limited operates a policy of continuous improvement and information in this document is subject to change without notice.