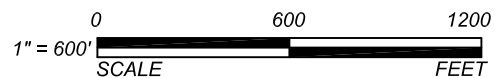


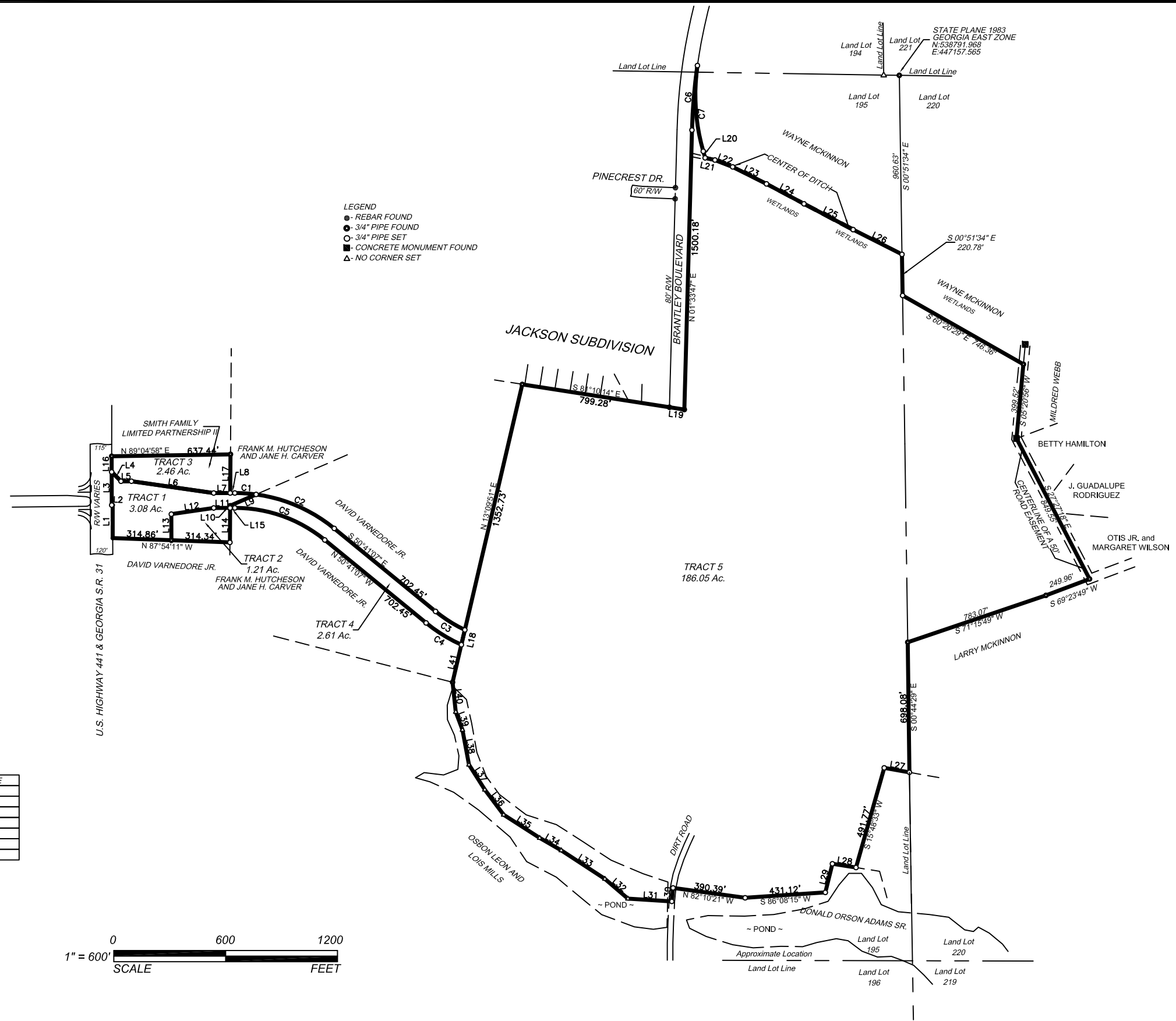
LINE	BEARING	DISTANCE
L1	N 00°07'06" W	176.92'
L2	N 88°00'01" W	5.00'
L3	N 00°07'06" W	177.97'
L4	S 45°06'06" E	70.73'
L5	N 89°54'53" E	56.00'
L6	S 81°50'06" E	446.00'
L7	N 89°54'53" E	88.53'
L8	N 89°54'53" E	24.70'
L9	S 66°31'40" W	152.12'
L10	S 00°19'14" W	11.80'
L11	S 89°54'53" W	87.84'
L12	S 81°39'52" W	229.93'
L13	S 00°04'19" E	140.07'
L14	S 00°19'14" W	185.04'
L15	N 89°54'53" E	25.39'
L16	N 00°11'10" E	84.16'
L17	S 00°25'14" W	207.43'
L18	N 13°09'51" E	81.64'
L19	S 81°10'14" E	80.65'
L20	S 15°54'12" E	36.62'
L21	S 77°29'15" E	54.05'
L22	S 68°46'48" E	101.87'
L23	S 63°18'52" E	203.16'
L24	S 62°02'34" E	227.71'
L25	S 62°16'17" E	298.04'
L26	S 63°10'04" E	293.79'
L27	N 79°53'03" W	137.25'
L28	N 80°55'44" W	128.20'
L29	S 13°52'56" W	158.29'
L30	S 05°17'11" W	72.75'
L31	N 86°19'50" W	236.37'
L32	N 49°19'33" W	162.54'
L33	N 56°48'56" W	279.59'
L34	N 60°11'24" W	134.00'
L35	N 57°08'26" W	229.35'
L36	N 36°58'10" W	168.24'
L37	N 32°30'17" W	158.71'
L38	N 10°28'56" W	190.12'
L39	N 20°24'57" W	103.24'
L40	N 06°08'22" W	159.53'
L41	N 13°09'51" E	206.97'



CURVE	RADIUS	ARC LENGTH	CHORD LENGTH	CHORD BEARING	DELTA ANGLE
C1	840.00'	114.67'	114.59'	S 86°10'28" E	7°49'19"
C2	840.00'	462.96'	457.12'	S 66°28'27" E	31°34'42"
C3	760.00'	186.48'	186.01'	S 57°42'52" E	14°03'30"
C4	840.00'	223.21'	222.55'	N 58°17'52" W	15°13'30"
C5	760.00'	522.62'	512.39'	N 70°23'07" W	39°24'00"
C6	3025.26'	347.62'	347.42'	N 04°51'17" E	6°35'01"
C7	1106.30'	464.37'	460.97'	S 03°52'42" E	24°03'00"



- LEGEND
- - REBAR FOUND
 - - 3/4" PIPE FOUND
 - - 3/4" PIPE SET
 - - CONCRETE MONUMENT FOUND
 - △ - NO CORNER SET



DRAWN BY: T.W.G.
 DATE: 6/20/16
 JOB NUMBER: 08-2536
 THESE DRAWINGS ARE THE PROPERTY OF STATEWIDE ENGINEERING, INC. AND ARE NOT TO BE REPRODUCED OR REUSED WITHOUT PERMISSION AND CREDIT.

SKETCH 2-C

PLOT DATE: 6/24/2016
 CADD FILE: S:\08\08-2536\GRAD SKETCHES



STATEWIDE ENGINEERING, INC.
ENGINEERS - SURVEYORS - PLANNERS

516 EAST ASHLEY STREET DOUGLAS, GEORGIA (912) 384-7723

SATILLA PARK SITE AGREAGE
GRAD CERTIFICATION APPLICATION
DOUGLAS/COFFEE COUNTY, GA