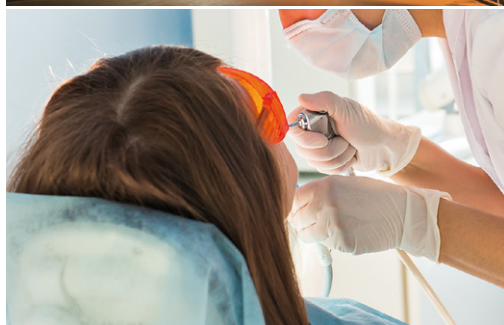


# Dental Therapist Trainers

## – 2021/22 –

Applications Open:  
1 March 2021

Hampshire  
and the  
Isle of Wight



**Interviews**  
13 May 2021



**Meet & Greet**  
Date to be advised



**Scheme Starts**  
1 September 2021



# We are looking for qualified and experienced dental practitioners to become trainers on our Dental Therapy Foundation Training Scheme across Hampshire and the Isle of Wight.

We will provide you with training, support and advice from experienced colleagues to help you become a confident and competent trainer.

## Overview of the Programme

The role of the trainers on the TFT scheme is to provide support to the trainees, this will be in the form of clinical support where necessary in the surgery, one to one teaching in the form of tutorials and advice and assistance with non-clinical issues of general practice.

- › Part-time commitment 3 days a week
- › Therapist training scheme modelled on DFT scheme for dentists
- › Educational and training courses provided for trainers
- › Opportunity to meet other dental colleagues and trainers
- › Minimum 75% salary reimbursement, trainer's grant and service costs

## TESTIMONIALS FROM OUR CURRENT TRAINERS

“ Our practice UDAs increased whilst Associates were freed up to do more complex work. ”

“ As a provider I didn't charge my associates for using the TFT because the practice benefited overall in the bigger picture. ”

“ 3 hours of private hygiene a week bought in around £300 a week = £1200 a month which paid toward dental materials. ”

“ NHS perio is more efficient using a TFT – treatment can be completed over 2 visits depending upon initial clinical findings. ”

To apply – email: [sue.osullivan@hee.nhs.uk](mailto:sue.osullivan@hee.nhs.uk)

## ENQUIRIES

Gill Mather, Training Programme Director, Therapy  
E: [gill.mather@hee.nhs.uk](mailto:gill.mather@hee.nhs.uk) T: 07917 580683

Sue O'Sullivan, Education Programme Officer, Dental  
E: [sue.osullivan@hee.nhs.uk](mailto:sue.osullivan@hee.nhs.uk) T: 01865 932065

Developing people  
for health and  
healthcare

[www.hee.nhs.uk](http://www.hee.nhs.uk)

[www.thamesvalley.hee.nhs.uk](http://www.thamesvalley.hee.nhs.uk)

