

Southeast Alaska Red King Crab Stock Assessment

King and Tanner Task Force Mtg.

May 25th, 2016



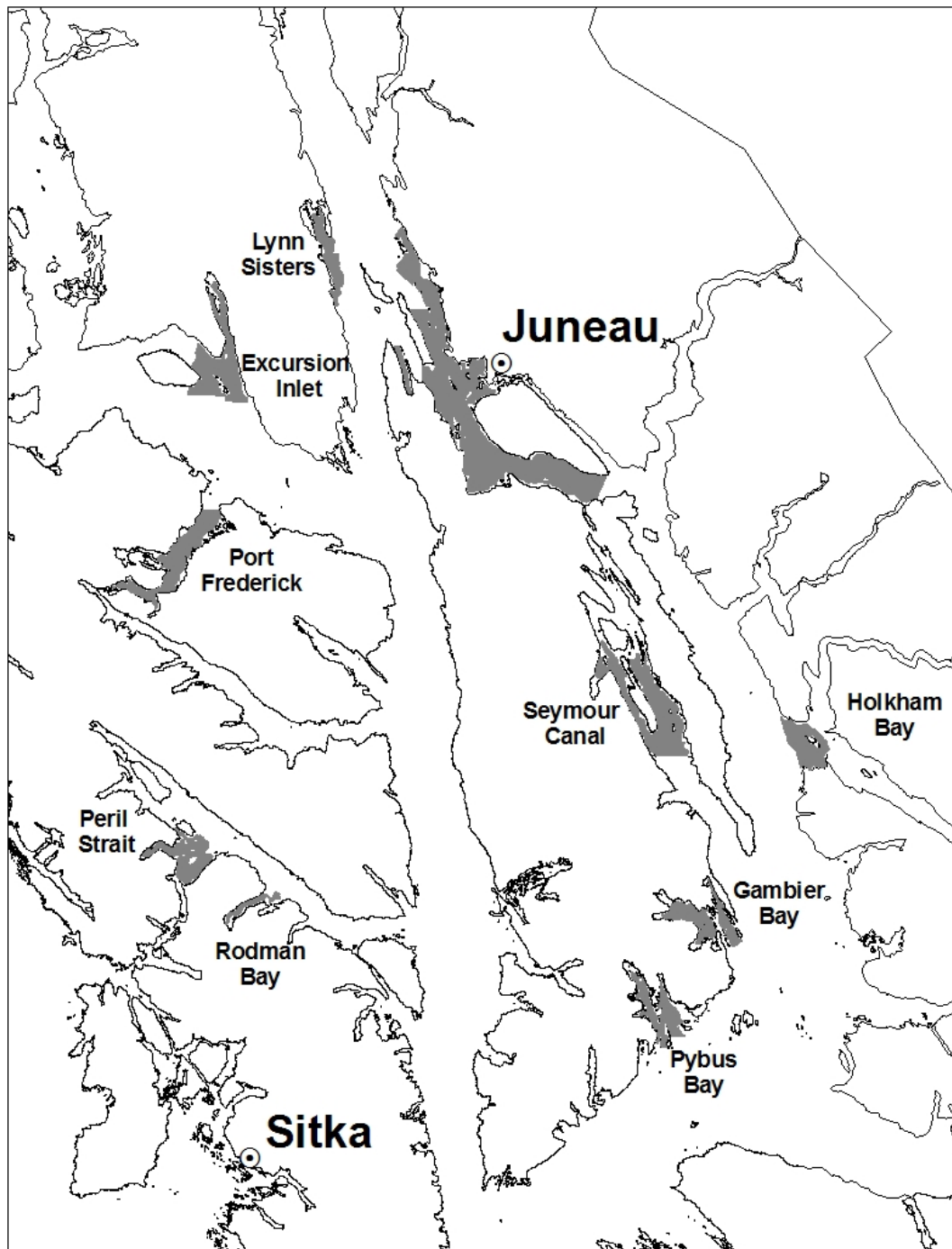
Image: northpacificseafoods.com

RKC Assessment / Management

- Assessment
 - 7 areas surveyed with ~565 pot lifts
 - Biomass estimated using Catch-Survey Analysis (CSA) model
- Management plan
 - Season November 1 – January 24
 - Appropriate harvest rate
 - Regional GHL set using survey biomass
 - Pot limits based on GHL
 - Ex. 200,000 GHL = 20 pot limit per vessel
 - Minimum GHL threshold of 200,000 lbs legal crab
 - Mark/Recapture expansion factor incorporated into biomass estimate
 - Males only, 7-inch minimum CW

Southeast Alaska

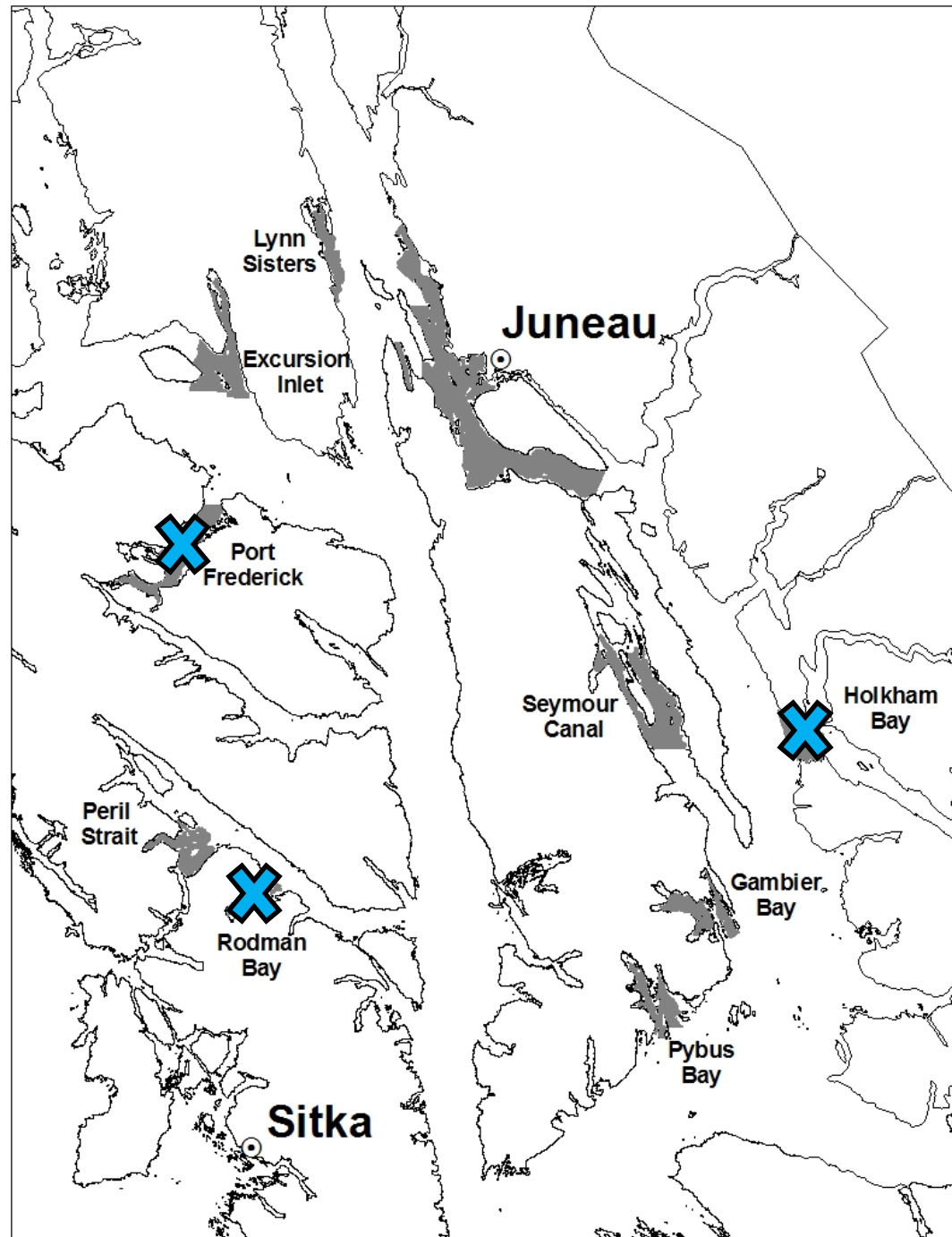
Major Commercial Red King Crab
Fishing Grounds



Southeast Alaska

2015 Survey Updates:

- Budget reductions caused survey sources to be re-allocated into historically more important survey areas
- Port Frederick, Holkham Bay, and Rodman Bay removed due to historically low catch rates and abundance
- No significant impact on biomass estimate



RKC Biomass / Harvest

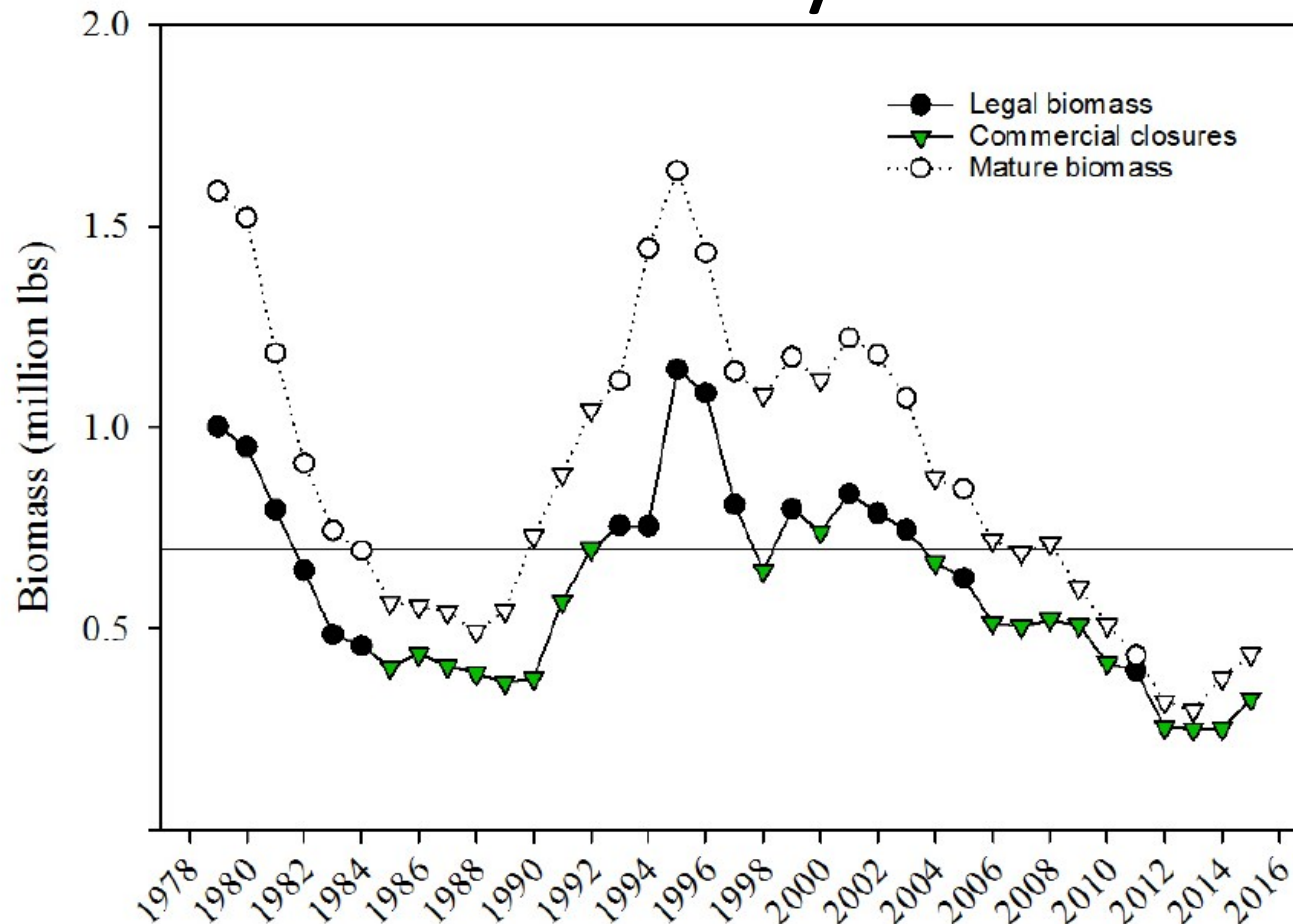


Figure 1. Total biomass estimates of mature and legal red king crab for surveyed areas in Southeast Alaska. Estimates based on Catch-Survey Analysis (CSA) methodologies. This does not include Holkham Bay or non-surveyed areas. Reference line represents long-term (1993–2007) average legal biomass estimate. Triangles represent years in which there was a commercial harvest closure.