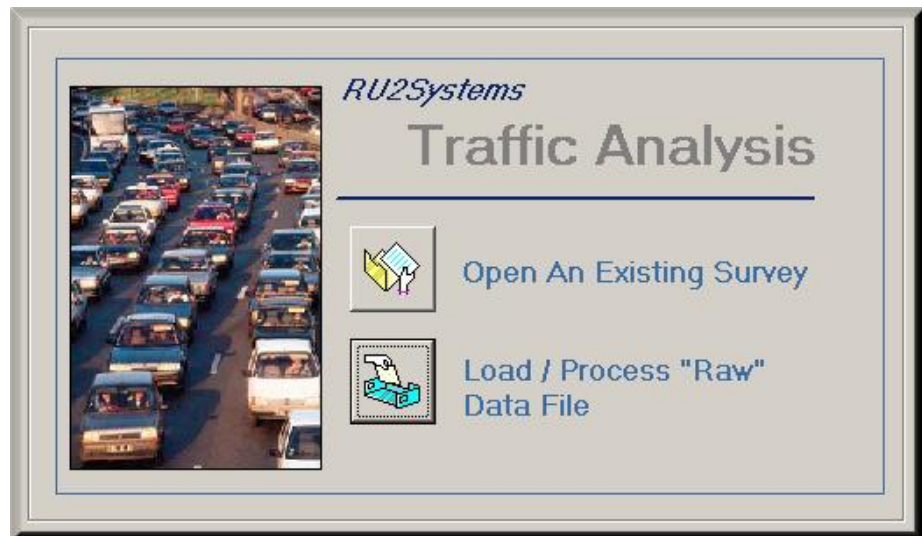




RU2 Systems, Inc.

The Leader in Speed Display Technology

RU2 Traffic Count Data Acquisition System & Software



RU2 Systems data collection platform uses non-contact technology so that deployment of pneumatic tubing is not required. The acquisition package utilizes the streaming data acquired from the radar gun. Advanced proprietary algorithms filters and analyzes the radar data stream to determine what is and is not a discrete target. Each oncoming vehicle's speed is recorded with a time/date stamp. This methodology provides moderate to excellent accuracy somewhat dependent on environmental variables as all single-gun systems are. Its best application is for determining peak load times and violation concentrations for complaint verification and scheduling deployment of traffic enforcement officers.

The collected data is saved on a Secure Data (SD) card and can be downloaded to any* computer with the provided card reader. The data can then be analyzed by RU2's Traffic Count Software package included with the system or software capable of accepting a comma delimited ASCII text file, such as Microsoft® Excel. Tabulated reports and charts include Survey Summary, Vehicle Count, Speed, and Time/date, 85th Percentile, 15 Minute, 1 Hour, Daily and Weekly analysis, etc.

*Windows 2000 or newer

RU2 Systems: The Industry Leader in Speed Display Technology

2631 North Ogden Road, Mesa, AZ 85215

[P] 480-982-2107 [F] 480-982-5237

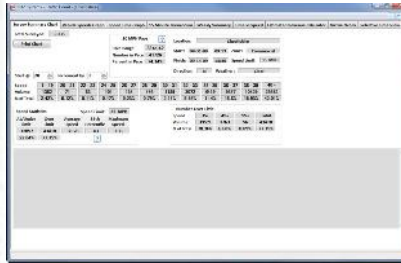
Toll Free 877-982-2107

e-mail: info@ru2systems.com www.ru2systems.com

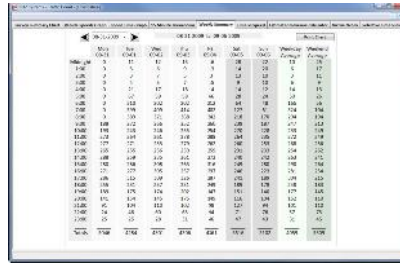
DATA COLLECTION SYSTEM



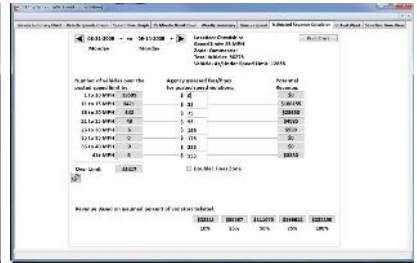
Ru2 Traffic Count Software



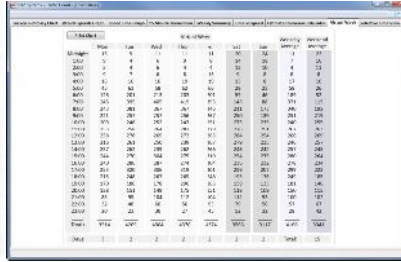
Survey Summary



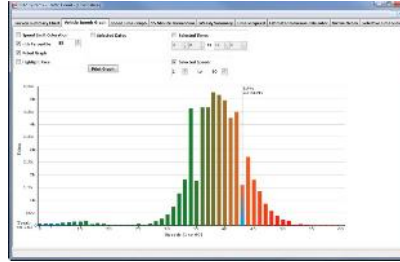
Weekly Summary



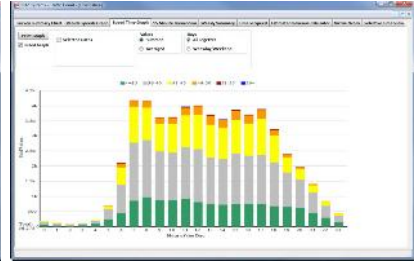
Revenue Calculator



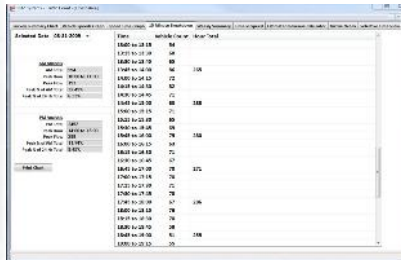
Virtual Week Study



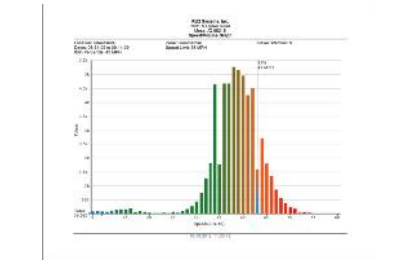
Vehicle Speed Graph



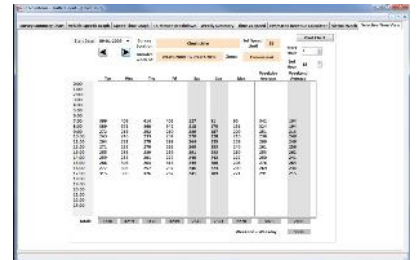
Speed Time Graph



15 Min./Hourly Breakdown



Vehicle Speed Print Out



Select Time View

Familiar Windows tabbed interface makes Survey Set-Up easy:

Opportunity to define Variable Display Scheme (upper/lower limits and increment), Reporting Officer, Start Date/Time, End Date/Time, Conditions, Zone Profile, Location, Direction etc.

Complete Reporting Capabilities

- 1) Survey Summary
 - a. Variable Display Scheme
 - b. Total Surveyed
 - c. Incremental Speed Grid (Speed, Volume, % of Survey)
 - d. Speed Statistics Summary
 - I. Posted Limit
 - II. At/Under Limit Qty. / %
 - III. Over Limit Qty. / %
 - IV. Average Speed
 - V. 85th Percentile
 - VI. Maximum Speed
 - e. 10 MPH Pace
 - I. Pace Range
 - II. Number in Pace
 - III. % in Pace
 - f. Number Exceeding Limit (+10, +20, +30..., Number & %)
- 2) Vehicle Speeds Graph
- 3) Daily Volume/Time Graph
- 4) 85th Percentile Graph
- 5) 15 Minute Breakdown
 - a. AM/PM Analysis
 - I. Total
 - II. Peak Hour
 - III. Peak Flow
 - IV. Peak % of AM
 - V. Peak % to 24 Hr
- 6) Weekly Summary 4 Week Limit
- 7) Time vs. Speed
 - a. Hourly numeric breakdown
- 8) Comparative Survey Analysis
 - a. Virtual Week
 - b. Dynamic/Survey Week
 - c. Comparative Surveys
 - d. Selective Time View (Time Slice)
- 9) Estimated Revenue Calculator
 - a. Client defined fine schedule x Efficiency over Survey Results

Technical specifications are subject to change without notice.

How RU2 Systems Licenses "Traffic Count" Traffic Data Analysis software:

The organization is granted with its first "seat" purchase a site license for our software. RU2 does not restrict the number of computers the software is installed on within the organization. Subsequent "seats" do not cost as much as we are not charging repeatedly for the software. So for example, should an organization want 3 units each with data collection they would be charged for one "First Seat" and two "Additional Seats".

RU2 Systems, Inc.
2631 N. Ogden Road
Mesa, AZ 85215

[P] 480-982-2107 [F] 480-982-5237
Toll Free 877-982-2107
www.ru2systems.com