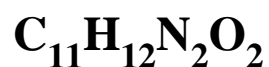
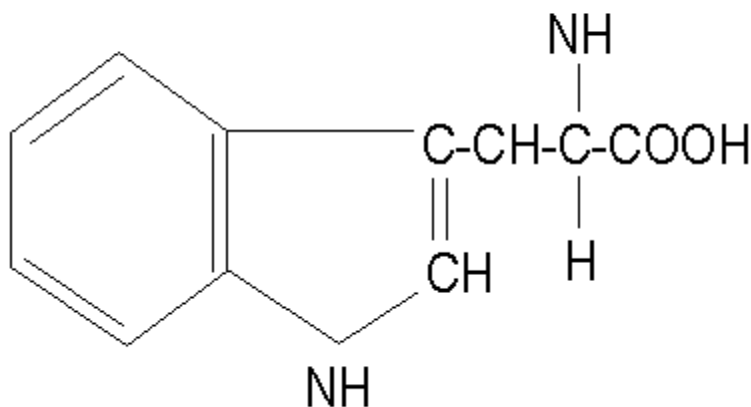




8430 West Bryn Mawr Ave., Suite 650, Chicago, IL 60631 Tel: (773)380-7000 Fax: (773)380-7006

L-Tryptophan (Feed-grade)

Chemical Formula:



Molecular Weight:	204.23
CP Content (%/16g-N):	85.8%
ME:	5460 kcal/kg.*
Description:	Yellowish-white, crystalline powder
Solubility in H₂O:	1.06% (w/w) at 20C

Specifications

Purity:	98.5% min.
Loss on drying:	1.0% max.
Residue on ignition:	0.5% max.

Packaging

Paper bag:	10 kg
------------	-------

*NRC, 1984