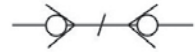


QC-V SERIES SCREW TYPE COUPLING (STEEL)



Socket with valve Plug with valve



Features

QC-V Series couplings feature:

- Connect and disconnect under pressure
Up to 4350 PSI
- Improved corrosion resistance
- Two stage valve protects sealing components during pressurized connection and disconnection
- Flush face design avoids fluid loss and air inclusion
- Easy clean surfaces, limiting contamination
- Interchangeable with STUCCHI VEP Series, DNP PST4 Series PARKER FET Series, and VOSWINKEL FT Series

See interchange chart on page 20

Applications

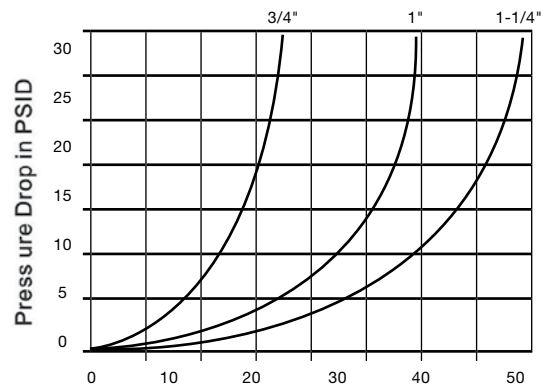
The QC-V series couplings are widely used on excavators with attachment lines for Grapples, Hammers, Thumbs etc. They are also found on construction equipment applications where a higher working pressure and connect/disconnect under pressure requirements exist.

Specifications

Body Size (in)	3/4	1	1 1/4
Rated Pressure (PSI)	5500	5000	5000
Rated Flow (GPM)	22	32	46
Temperature Range (std seals) Do not exceed 65° C when connecting and disconnecting	-30° C to +100° C		
Standard seal material is BUNA			
Safety Factor 2.5:1			

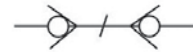
Performance

QC-V Series (3/4", 1", 1-1/4")



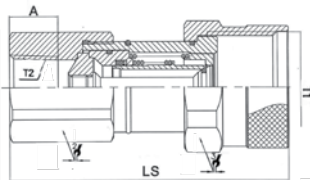
Flow in GPM
1 GPM = 3.78 L/Min
1PSID = 0.0069 Mpa

QC-V SERIES SCREW TYPE COUPLING (STEEL)



Socket with valve Plug with valve

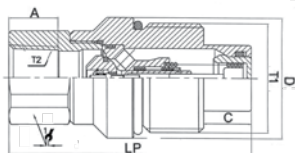
Socket



ITEM#	PART NO.	LS	D	2/	3/	T2
1030	QCV-34F-NPT-3/4"	84.9	53.8	41	50	NPT3/4
1031	QCV-1F-NPT-1"	99.7	58.8	46	55	NPT1
1032	QCV-114F-NPT-1-1/4"	106.8	69.8	55	65	NPT1-1/4
1033	QCV-34F-SAE-1-1/16"	84.9	53.8	41	50	-12 SAE
1034	QCV-1F-SAE-1-5/16"	99.7	58.8	46	55	-16 SAE
1035	QCV-114F-SAE-1-5/8"	106.8	69.8	55	65	-20 SAE

DIMENSIONS IN MM

Plug



ITEM#	PART NO.	LP	C	1/	T2	T1
1036	QCV-34M-NPT-3/4"	99	49.8	41	NPT3/4	M45X3
1037	QCV-1M-NPT-1"	113.6	54.8	46	NPT1	M50X3
1038	QCV-114M-NPT-1-1/4"	123.4	64.5	55	NPT1-1/4	M58X3
1039	QCV-34M-SAE-1-1/16"	99	49.8	41	-12 SAE	M45X3
1040	QCV-1M-SAE-1-5/16"	113.6	54.8	46	-16 SAE	M50X3
1041	QCV-114M-SAE-1-5/8"	123.4	64.5	55	-20 SAE	M58X3

DIMENSIONS IN MM

Dust Protectors

CAP FOR SOCKET HALF



ITEM#	PART NO.
1042	QCV-3/4"-SC
1043	QCV-1"-SC
1044	QCV-1-1/4"-SC

COLOR: GREEN

CAP FOR PLUG HALF



ITEM#	PART NO.
1045	QCV-3/4"-PC
1046	QCV-1"-PC
1047	QCV-1-1/4"-PC

COLOR: GREEN



CORRECT PROCEDURE TO CONNECT AND DISCONNECT THE QC-V SERIES

1. Clean all mating surfaces thoroughly then pull socket sleeve forward
2. Align socket and plug, pushing/turning the socket sleeve towards the plug while engaging the threads. Allow threads to pull socket into the plug.
3. Initial connection should be hand threaded, followed by a wrench.
4. Continue to thread socket sleeve into plug until end of sleeve meets plug body.
5. To disconnect, use a wrench to break sleeve free and keep socket and plug aligned.