

QC-HP SERIES HIGH PRESSURE HYDRAULIC QUICK COUPLING (STEEL) 

Socket with valve Plug with valve



Features

QC-HP Series couplings feature:

- Machined from solid steel barstock for durability
- Hard, chrome alloy balls are used for valving. They are spring loaded for positive seating of the valve
- The valve provides a metal-to-metal seal between the ball and coined seat
- The interface seal is polyurethane which resists high pressure extrusion
- A threaded valve retainer provides a valve stop that assures positive valve alignment
- Interchangeable with PARKER 3000 Series and FASTER PVV Series

See interchange chart on page 20

Applications

The QC-HP series couplings with their threaded union locking system and precision ball-type check valves, are designed for extreme high pressure applications such as portable hydraulic jacks.

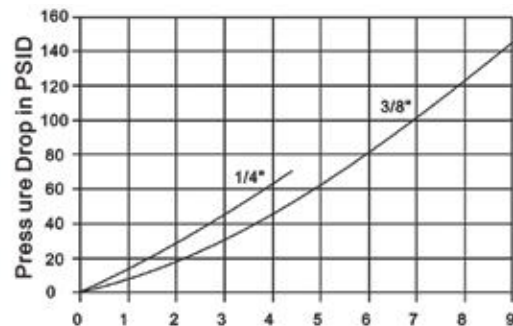
Specifications

Body Size (in)	1/4	3/8
Rated Pressure (PSI)	10,000	10,000
Rated Flow (GPM)	3	6
Temperature Range (std seals)	-20° C to +100° C	
Standard seal material is polyurethane		
Safety Factor 2.5:1		

Performance

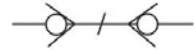
QC-HP Series (1/4", 3/8")

Test Fluid: Oil-200SUS



Flow in GPM
 1 GPM = 3.78 L/Min
 1PSID = 0.0069 Mpa

QC-HP SERIES HIGH PRESSURE HYDRAULIC QUICK COUPLING (STEEL)



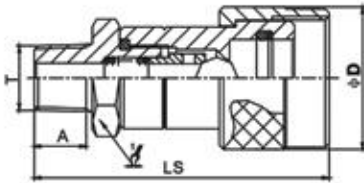
Socket with valve Plug with valve

Socket



ITEM#	PART NO.	LS	φD	1/4	A	T
1048	QCHP-14F-NPT-1/4"	59.6	28.5	19	22	NPT1/4
1049	QCHP-38F-NPT-3/8"	72.5	35	24	25	NPT3/8

DIMENSIONS IN MM

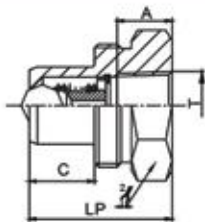


Plug



ITEM#	PART NO.	LP	C	2/4	A	T
1050	QCHP-14M-NPT-1/4"	32.5	11.2	19	13	NPT1/4
1051	QCHP-38M-NPT-3/8"	35	16	32	13.5	NPT3/8

DIMENSIONS IN MM



Dust Protectors

CAP FOR SOCKET HALF



ITEM#	SIZE	PART NO.
1052	1/4"	QCHP-1/4"-SC
1053	3/8"	QCHP-3/8"-SC

STEEL WITH CHAIN

CAP FOR PLUG HALF



ITEM#	SIZE	PART NO.
1054	1/4"	QCHP-1/4"-PC
1055	3/8"	QCHP-3/8"-PC

STEEL WITH CHAIN