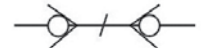


QC-FF SERIES FLUSH FACE HYDRAULIC COUPLING (STEEL)



Socket with valve Plug with valve



Features

QC-FF Series couplings feature:

- New valve design resists damage from high impulse applications
- Sleeve Lock prevents accidental disconnection
- Anti-Blowout Nitrile/PTFE bonded seal to prevent damage during severe applications
- Durable ball-locking mechanism insures a reliable connection
- Flush Face Valving to reduce air inclusion upon connection and spillage upon disconnection
- New plating treatment provides advanced anti corrosion performance
- QC-FF Series conforms to the ISO16028 Standard
- Interchangeable with PARKER FF/FE/ FEM Series, STUCCHI A-PREMIER Series, AEROQUIP FD89 Series and SAFEWAY FF Series

See interchange chart on page 20



Do not use as swivels.
Rotation under pressure will result in excessive wear.

Applications

The QC-FF series couplings are widely used in the public utility market where hydraulic oil spillage can constitute a serious safety hazard. QC-FF series couplings are also used for the quick change of hydraulic tools in construction, railway, maintenance and mining industries and are commonly found on excavators and skid steer loaders.

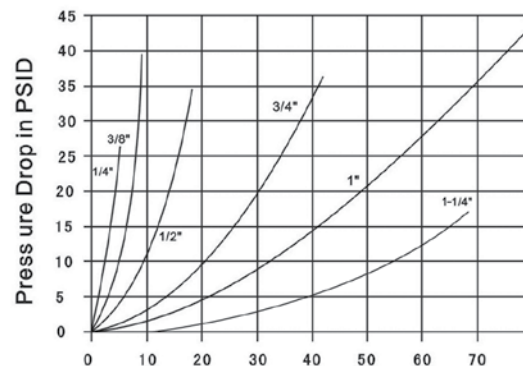
Specifications

ISO SIZE/BODY SIZE	6.3 (1/4")	10 (3/8")	12.5 (1/2")	16 (5/8")	19 (3/4")	25 (1")
Rated Pressure (PSI)	4350	4350	4350	3625	3625	3000
Rated Flow (GPM)	3	6	12	28	50	70
Temperature Range	-20° C to +100° C					
Spillage (ML)	.015	.015	.020	.020	.15	.25
Air Inclusion (ML)	.020	.020	.070	.070	.100	.20
Standard seal material is Buna						
Safety Factor 4:1						

Performance

QC-FF Series (1/4", 3/8", 1/2", 5/8", 3/4", 1")

Test Fluid: Oil-200SUS

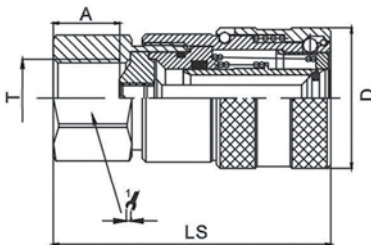


Flow in GPM
1 GPM = 3.78 L/Min
1PSID = 0.0069 Mpa

QC-FF SERIES FLUSH FACE HYDRAULIC COUPLING (STEEL) NPT THREADS

Socket with valve Plug with valve

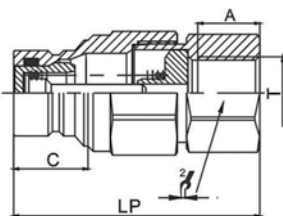
Socket NPT



ITEM#	ISO SIZE	PART NO.	LS	ΦD	1/2	A	T
1104	6.3	QCFF-14F-NPT-1/4"	49.2	28	20	14	NPT1/4
1105	10	QCFF-38F-NPT-3/8"	68.4	32	24	14	NPT3/8
1106	10	QCFF-38F-NPT-1/2"	68.4	32	24	14	NPT1/2
1107	12.5	QCFF-12F-NPT-1/2"	75.2	38	32	18	NPT1/2
1108	12.5	QCFF-12F-NPT-3/4"	75.2	38	32	18	NPT3/4
1109	16	QCFF-58F-NPT-3/4"	80.2	42	36	22	NPT3/4
1110	19	QCFF-34F-NPT-1"	99.9	48	41	23.5	NPT1
1111	25	QCFF-1F-NPT-1-1/4"	107	56	55	24	NPT1-1/4

DIMENSIONS IN MM

Plug NPT



ITEM#	ISO SIZE	PART NO.	LP	C	1/2	A	T
1112	6.3	QCFF-14M-NPT-1/4"	49.2	15.2	20	14	NPT1/4
1113	10	QCFF-38M-NPT-3/8"	55.6	19.5	24	14	NPT3/8
1114	10	QCFF-38M-NPT-1/2"	55.6	19.5	24	14	NPT1/2
1115	12.5	QCFF-12M-NPT-1/2"	71.5	21.6	32	18	NPT1/2
1116	12.5	QCFF-12M-NPT-3/4"	71.5	21.6	32	18	NPT3/4
1117	16	QCFF-58M-NPT-3/4"	75	21.6	36	22	NPT3/4
1118	19	QCFF-34M-NPT-1"	93.8	29	41	23.5	NPT1
1119	25	QCFF-1M-NPT-1-1/4"	90	55	55	24	NPT1-1/4

DIMENSIONS IN MM

Dust Protectors

CAP FOR SOCKET HALF



ITEM#	ISO SIZE	PART NO.
1120	6.3	QCFF-1/4"-SC
1121	10	QCFF-3/8"-SC
1122	12.5	QCFF-1/2"-SC
1123	16	QCFF-5/8"-SC
1124	19	QCFF-3/4"-SC

COLOR: RED

CAP FOR PLUG HALF



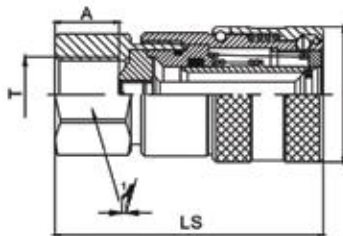
ITEM#	ISO SIZE	PART NO.
1125	6.3	QCFF-1/4"-PC
1126	10	QCFF-3/8"-PC
1127	12.5	QCFF-1/2"-PC
1128	16	QCFF-5/8"-PC
1129	19	QCFF-3/4"-PC

COLOR: RED

QC-FF SERIES FLUSH FACE HYDRAULIC COUPLING (STEEL) SAE THREADS

Socket with valve Plug with valve

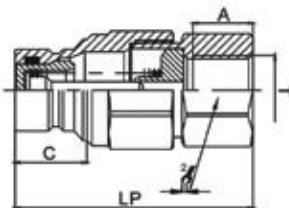
Socket SAE



ITEM#	ISO SIZE	PART NO.	LS	D	1/1	A	T
1130	6.3	QCFF-14F-SAE-9/16"-18	49.2	φ28	20	14	SAE-9/16-18
1131	10	QCFF-38F-SAE-9/16"-18	68.4	φ32	24	14	SAE-9/16-18
1132	10	QCFF-38F-SAE-3/4"-16	68.4	φ32	24	14	SAE-3/4-16
1133	12.5	QCFF-12F-SAE-3/4"-16	75.2	φ38	32	18	SAE-3/4-16
1134	12.5	QCFF-12F-SAE-7/8"-14	75.2	φ38	32	18	SAE-7/8-14
1135	12.5	QCFF-12F-SAE-1-1/16"-12	75.2	φ38	32	18	SAE-1-1/16-12
1136	16	QCFF-58F-SAE-3/4"-16	80.2	φ42	36	22	SAE-3/4-16
1137	16	QCFF-58F-SAE-7/8"-14	80.2	φ42	36	22	SAE-7/8-14
1138	16	QCFF-58F-SAE-1-1/16"-12	80.2	φ42	36	22	SAE-1-1/16-12
1139	19	QCFF-34F-SAE-1-1/16"-12	99.9	φ48	41	23.5	SAE-1-1/16-12
1140	19	QCFF-34F-SAE-1-5/16"-12	99.9	φ48	41	23.5	SAE-1-5/16-12
1141	25	QCFF-1F-SAE-1-5/8"-12	107	φ56	55	24	SAE-1-5/8-12

DIMENSIONS IN MM

Plug SAE



ITEM#	ISO SIZE	PART NO.	LP	C	2/1	A	T
1142	6.3	QCFF-14M-SAE-9/16"-18	49.2	15.2	20	14	SAE-9/16-18
1143	10	QCFF-38M-SAE-9/16"-18	55.6	19.5	24	14	SAE-9/16-18
1144	10	QCFF-38M-SAE-3/4"-16	55.6	19.5	24	14	SAE-3/4-16
1145	12.5	QCFF-12M-SAE-3/4"-16	71.5	21.6	32	18	SAE-3/4-16
1146	12.5	QCFF-12M-SAE-7/8"-14	71.5	21.6	32	18	SAE-7/8-14
1147	12.5	QCFF-12M-SAE-1-1/16"-12	71.5	21.6	32	18	SAE-1-1/16-12
1148	16	QCFF-58M-SAE-3/4"-16	75	21.6	36	22	SAE-3/4-16
1149	16	QCFF-58M-SAE-7/8"-14	75	21.6	36	22	SAE-7/8-14
1150	16	QCFF-58M-SAE-1-1/16"-12	75	21.6	36	22	SAE-1-1/16-12
1151	19	QCFF-34M-SAE-1-1/16"-12	93.8	29	41	23.5	SAE-1-1/16-12
1152	19	QCFF-34M-SAE-1-5/16"-12	93.8	29	41	23.5	SAE-1-5/16-12
1153	25	QCFF-1M-SAE-1-5/8"-12	90	55	55	24	SAE-1-5/8-12

DIMENSIONS IN MM

Dust Protectors

CAP FOR SOCKET HALF



ITEM#	ISO SIZE	PART NO.
1120	6.3	QCFF-1/4"-SC
1121	10	QCFF-3/8"-SC
1122	12.5	QCFF-1/2"-SC
1123	16	QCFF-5/8"-SC
1124	19	QCFF-3/4"-SC

COLOR: RED

CAP FOR PLUG HALF



ITEM#	ISO SIZE	PART NO.
1125	6.3	QCFF-1/4"-PC
1126	10	QCFF-3/8"-PC
1127	12.5	QCFF-1/2"-PC
1128	16	QCFF-5/8"-PC
1129	19	QCFF-3/4"-PC

COLOR: RED