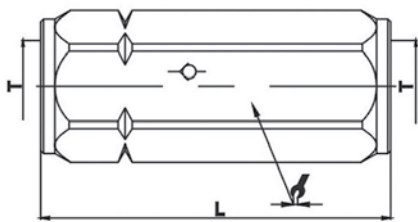


**QC-CV SERIES** HYDRAULIC IN-LINE CHECK VALVE (STEEL)

**Soft Seat Design**



ITEM#	PART NO.	T	L	⌀
1154	QCCV-14F-NPT-1/4"-5	NPT1/4	50.7	19
1155	QCCV-38F-NPT-3/8"-5	NPT3/8	62.2	24
1156	QCCV-12F-NPT-1/2"-5	NPT1/2	79.2	30
1157	QCCV-34F-NPT-3/4"-5	NPT3/4	82.9	36
1158	QCCV-1F-NPT-1"-5	NPT1	106.1	45

DIMENSIONS IN MM

**Specifications**

Body Size (in)	1/4	3/8	1/2	3/4	1
Rated Pressure (PSI)	5000	4000	4000	3000	3000
Rated Flow (GPM)	3	6	12	28	50
Temperature Range (std seals)	-20° C to +100° C				
Standard seal material is BUNA					
Cracking Spring Pressure	5 PSI				