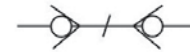


QC-B SERIES HYDRAULIC QUICK COUPLING (STEEL)



Socket with valve Plug with valve



Features

QC-B Series couplings feature:

- Poppet valves prevent uncoupled leakage
- Critical parts are hardened for durability
- Dependable ball-locking mechanism holds the mating halves together
- Socket and plug are precision machined from solid bar stock
- QC-B Series conforms to the ISO7241-B Standard
- Interchangeable with PARKER 60 Series, FASTER HNV Series, AEROQUIP FD45 Series and HANSEN HK Series

See interchange chart on page 20

Applications

The QB-B series couplings are used across the spectrum of hydraulic applications. These Double Shut-off couplings can be found anywhere that fluid transfer lines need to be connected and disconnected for operation or maintenance of equipment.

QB-B series couplings are used use in construction equipment, forestry equipment, agricultural machinery, oil tools, oil equipment, steel mill machinery and other demanding hydraulic applications.

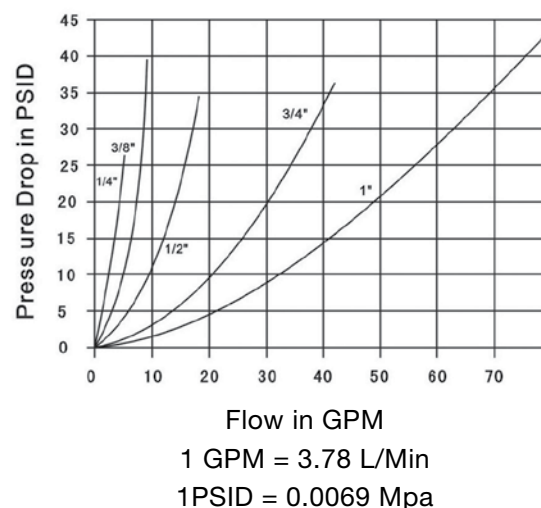
Specifications

Body Size (in)	1/4	3/8	1/2	3/4	1
Rated Pressure (PSI)	5000	4000	4000	3000	3000
Rated Flow (GPM)	3	6	12	28	50
Temperature Range (std seals)	-20° C to +100° C				
Standard seal material is BUNA					
Safety Factor 4:1					

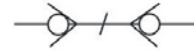
Performance

QC-B Series (1/4", 3/8", 1/2", 3/4", 1")

Test Fluid: Oil-200SUS

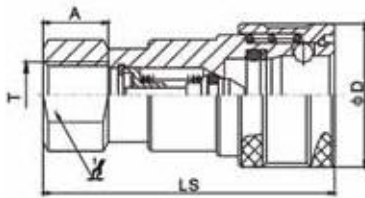


QC-B SERIES HYDRAULIC QUICK COUPLING (STEEL)



Socket with valve Plug with valve

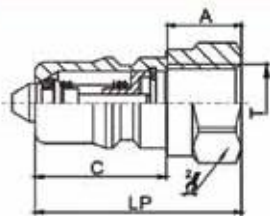
Socket



ITEM#	PART NO.	LS	φD	1/2	A	T
1074	QCB-14F-NPT-1/4"	58	28.5	19	13	NPT1/4
1075	QCB-38F-NPT-3/8"	65	35	24	13	NPT3/8
1076	QCB-12F-NPT-1/2"	74	44.5	26.5	20.5	NPT1/2
1077	QCB-34F-NPT-3/4"	92	54	36	22	NPT3/4
1078	QCB-1F-NPT-1"	103	63.5	41	23	NPT1

DIMENSIONS IN MM

Plug



ITEM#	PART NO.	LP	C	2/2	A	T
1079	QCB-14M-NPT-1/4"	36	22.8	19	13	NPT1/4
1080	QCB-38M-NPT-3/8"	40	25	24	13	NPT3/8
1081	QCB-12M-NPT-1/2"	46.5	28	27	17	NPT1/2
1082	QCB-34M-NPT-3/4"	56	36	36	22	NPT3/4
1083	QCB-1M-NPT-1"	63	35.5	45	23	NPT1

DIMENSIONS IN MM

Dust Protectors

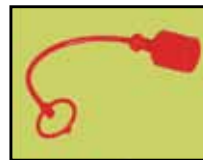
CAP FOR SOCKET HALF



ITEM#	SIZE	PART NO.
1084	1/4"	QCB-1/4"-SC
1085	3/8"	QCB-3/8"-SC
1086	1/2"	QCB-1/2"-SC
1087	3/4"	QCB-3/4"-SC
1088	1"	QCB-1"-SC

COLOR: RED

CAP FOR PLUG HALF



ITEM#	SIZE	PART NO.
1089	1/4"	QCB-1/4"-PC
1090	3/8"	QCB-3/8"-PC
1091	1/2"	QCB-1/2"-PC
1092	3/4"	QCB-3/4"-PC
1093	1"	QCB-1"-PC

COLOR: RED