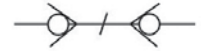


**QC-B SERIES HYDRAULIC QUICK COUPLING (316 STAINLESS STEEL)**



Socket with valve Plug with valve



**Features**

**QC-B Series couplings feature:**

- Poppet valves prevent uncoupled leakage
- Viton Seals Standard
- Dependable ball-locking mechanism holds the mating halves together
- Socket and plug are precision machined from solid bar stock
- QC-B Series conforms to the ISO7241-B Standard
- Interchangeable with PARKER 60 Series, FASTER HNV Series, AEROQUIP FD45 Series and HANSEN HK Series

See interchange chart on page 20

**Applications**

The QC-B series couplings, can be found anywhere that fluid transfer lines need to be connected and disconnected for operation or maintenance of equipment and where corrosion resistance is essential.

QC-B series couplings are used use in construction equipment, forestry equipment, agricultural machinery, oil rigs, oil tools, oil equipment, steel mill machinery and other demanding hydraulic applications.

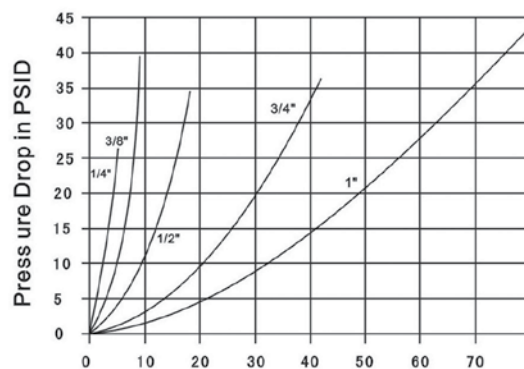
**Specifications**

Body Size (in)	1/4	3/8	1/2	3/4	1
Rated Pressure (PSI)	2000	2000	1500	1500	1000
Rated Flow (GPM)	3	6	12	28	50
Temperature Range (std seals)	-20° C to +100° C				
Standard seal material is VITON					
Safety Factor 4:1					

**Performance**

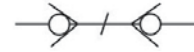
QC-B Series (1/4", 3/8", 1/2", 3/4", 1")

Test Fluid: Oil-200SUS



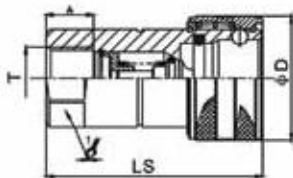
Flow in GPM  
 1 GPM = 3.78 L/Min  
 1PSID = 0.0069 Mpa

## QC-B SERIES HYDRAULIC QUICK COUPLING (316 STAINLESS STEEL)



Socket with valve Plug with valve

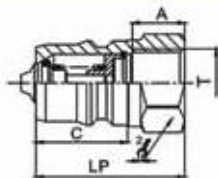
### Socket



ITEM#	PART NO.	LS	$\phi D$	$\frac{1}{2}$	A	T
1094	QCB-SS-14F-NPT-1/4"	58	27	19	13	NPT1/4
1095	QCB-SS-38F-NPT-3/8"	65	35	24	13	NPT3/8
1096	QCB-SS-12F-NPT-1/2"	73.5	42	30	17	NPT1/2
1097	QCB-SS-34F-NPT-3/4"	92	54	36	22	NPT3/4
1098	QCB-SS-1F-NPT-1"	103	65	41	23	NPT1

DIMENSIONS IN MM

### Plug



ITEM#	PART NO.	LP	C	$\frac{2}{2}$	A	T
1099	QCB-SS-14M-NPT-1/4"	36	22.8	19	13	NPT1/4
1100	QCB-SS-38M-NPT-3/8"	40	25	24	13	NPT3/8
1101	QCB-SS-12M-NPT-1/2"	46.5	28	27	17	NPT1/2
1102	QCB-SS-34M-NPT-3/4"	56	36	36	22	NPT3/4
1103	QCB-SS-1M-NPT-1"	63	35.5	45	23	NPT1

DIMENSIONS IN MM

### Dust Protectors



#### CAP FOR SOCKET HALF

ITEM#	SIZE	PART NO.
1084	1/4"	QCB-1/4"-SC
1085	3/8"	QCB-3/8"-SC
1086	1/2"	QCB-1/2"-SC
1087	3/4"	QCB-3/4"-SC
1088	1"	QCB-1"-SC

COLOR: RED



#### CAP FOR PLUG HALF

ITEM#	SIZE	PART NO.
1089	1/4"	QCB-1/4"-PC
1090	3/8"	QCB-3/8"-PC
1091	1/2"	QCB-1/2"-PC
1092	3/4"	QCB-3/4"-PC
1093	1"	QCB-1"-PC

COLOR: RED