

QC-AG POPPET TYPE HYDRAULIC QUICK COUPLING (STEEL)



Socket with valve Plug with valve



Features

QC-AG Series couplings feature:

- Poppet valves to prevent uncoupled leakage
- Critical parts are hardened for durability
- Dependable ball-locking mechanism holds the mating halves together
- Socket and plug are precision machined from solid bar stock
- QC-AG Series conforms to the ISO 5675 Standard
- Interchangeable with PARKER 4000 Series STUCCHI IR-V Series and Safeway S20 Series

See interchange chart on page 20

Applications

The QC-AG series couplings brings to the industry a proven design for use on construction equipment, forestry equipment, agricultural machinery, oil tools, steel mill machinery and other demanding hydraulic applications.

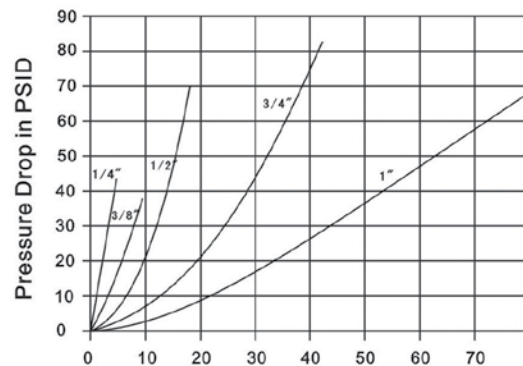
Specifications

Body Size (in)	1/4	3/8	1/2	3/4	1
Rated Pressure (PSI)	5000	4000	4000	3000	3000
Rated Flow (GPM)	3	6	12	28	50
Temperature Range (std seals)	-20° C to +100° C				
Standard seal material is BUNA					
Safety Factor 4:1					

Performance

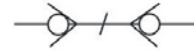
QC-AG Series (1/4", 3/8", 1/2", 3/4", 1")

Test Fluid: Oil-200SUS



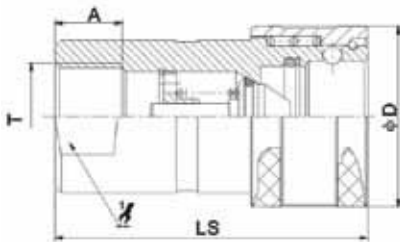
Flow in GPM
 1 GPM = 3.78 L/Min
 1PSID = 0.0069 Mpa

QC-AG POPPET TYPE HYDRAULIC QUICK COUPLING (STEEL)



Socket with valve Plug with valve

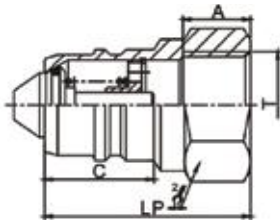
Socket



ITEM#	PART NO.	LS	φD	1/2	A	T
1000	QCAG-14F-NPT-1/4"-P	53.5	27.6	19	12.5	NPT1/4
1001	QCAG-38F-NPT-3/8"-P	63	34	24	13	NPT3/8
1002	QCAG-12F-NPT-1/2"-P	67	38.5	30	18	NPT1/2
1003	QCAG-34F-NPT-3/4"-P	81	47.5	35	18	NPT3/4
1004	QCAG-1F-NPT-1"-P	97.5	56.2	41	21	NPT1

DIMENSIONS IN MM

Plug



ITEM#	PART NO.	LP	C	2/2	A	T
1005	QCAG-14M-NPT-1/4"-P	36	23	19	12.5	NPT1/4
1006	QCAG-38M-NPT-3/8"-P	40	28.5	24	13	NPT3/8
1007	QCAG-12M-NPT-1/2"-P	46	29	27	18	NPT1/2
1008	QCAG-34M-NPT-3/4"-P	49	34	33.5	18	NPT3/4
1009	QCAG-1M-NPT-1"-P	64	41	41	21	NPT1

DIMENSIONS IN MM

Dust Protectors



CAP FOR SOCKET HALF

ITEM#	SIZE	PART NO.
1010	1/4"	QCAG-1/4"-SC
1011	3/8"	QCAG-3/8"-SC
1012	1/2"	QCAG-1/2"-SC
1013	3/4"	QCAG-3/4"-SC
1014	1"	QCAG-1"-SC

COLOR: RED



CAP FOR PLUG HALF

ITEM#	SIZE	PART NO.
1015	1/4"	QCAG-1/4"-PC
1016	3/8"	QCAG-3/8"-PC
1017	1/2"	QCAG-1/2"-PC
1018	3/4"	QCAG-3/4"-PC
1019	1"	QCAG-1"-PC

COLOR: RED