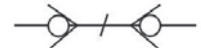


QC-FB SERIES SCREW TYPE COUPLING (BRASS)



Socket with valve Plug with valve



Features

QC-FB Series couplings feature:

- Flush face valve keeps spillage and air inclusion to a minimum
- Corrosion resistant brass for a wide range of applications
- Connectable and disconnectable under pressure
- Cast steel wing for durability
- Interchangeable with EATON 5100 Series, PARKER 6100 Series, SAFEWAY S51 Series, DIXON W Series, FASTER FB Series, STUCCHI W Series and others

See interchange chart on page 28

Applications

The QC-FB Series Couplings are widely used on wet-line kits for tractor trailers and can be used for submersible pumps, engine test stands and applications requiring connection and disconnection under pressure.

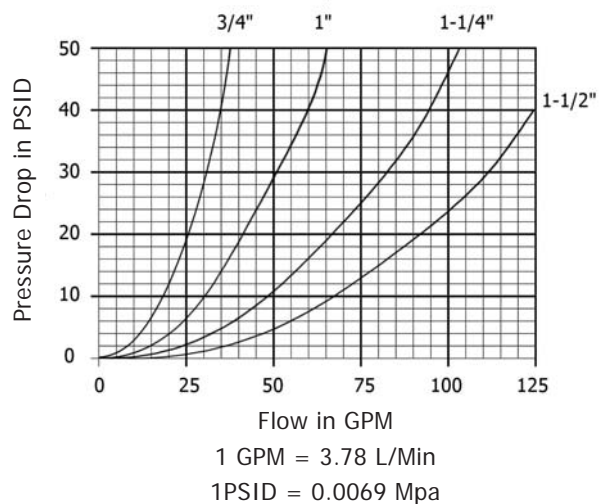
Specifications

BODY SIZE (IN)	3/4"	1"	1 1/4"	1 1/2"
Rated Pressure (PSI)	3000	3000	3000	3000
Temperature Range	-22°F to +230°F			
Standard seal material is Buna				
Safety Factor 2.5:1				

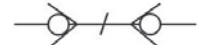
Performance

QC-FB Series (3/4", 1", 1 1/4", 1 1/2")

Test Fluid: Oil-200SUS



QC-FB SERIES SCREW TYPE COUPLING (BRASS)



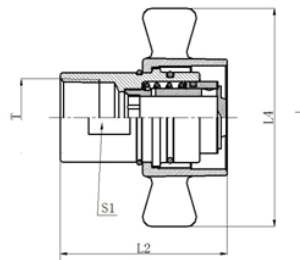
Socket with valve Plug with valve

Socket



ITEM#	PART NO.	L2	L4	S1	T
1900	QCFB-08-F	78.5	103	29.5	1/2" NPT
1902	QCFB-12-F	78.5	130	29.5	3/4" NPT
1904	QCFB-16-F	93.0	111	36.5	1" NPT
1906	QCFB-20-F	101.0	131.8	45.2	1-1/4" NPT
1908	QCFB-24-F	102.0	134.9	50.8	1-1/2" NPT

DIMENSIONS IN MM

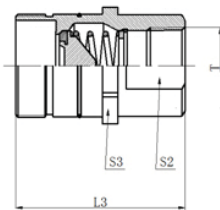


Plug



ITEM#	PART NO.	L3	S3	S2	T
1901	QCFB-08-M	79.0	41.0	30.0	1/2" NPT
1903	QCFB-12-M	79.0	41.0	30.0	3/4" NPT
1905	QCFB-16-M	90.0	47.6	40.0	1" NPT
1907	QCFB-20-M	94.0	54.0	47.7	1-1/4" NPT
1909	QCFB-24-M	104.6	63.5	57.2	1-1/2" NPT

DIMENSIONS IN MM



Dust Protectors

CAP FOR SOCKET HALF



ITEM#	SIZE	PART NO.
1910	3/4"	QCFBM-12
1912	1"	QCFBM-16
1914	1-1/4"	QCFBM-20
1916	1-1/2"	QCFBM-24

BRASS WITH STAINLESS CHAIN

CAP FOR PLUG HALF



ITEM#	SIZE	PART NO.
1911	3/4"	QCFBF-12
1913	1"	QCFBF-16
1915	1-1/4"	QCFBF-20
1917	1-1/2"	QCFBF-24

BRASS WITH STAINLESS CHAIN