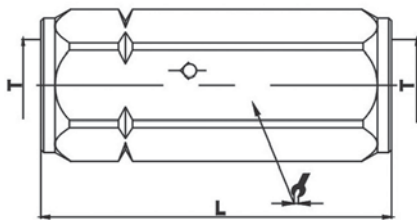


QC-CV SERIES HYDRAULIC IN-LINE CHECK VALVE (STEEL)

Hard Seat Design



Features

QC-CV Series Check Valves feature:

- Metal to metal seat for use with hydraulic and corrosive fluids
- 5 PSI spring cracking pressure

Applications

QC-CV Series Check Valves are designed to stop the flow of fluid in one direction while allowing free flow in the opposite direction.

Specifications

Body Size (in)	1/4	3/8	1/2	3/4	1
Rated Pressure (PSI)	5000	4000	4000	3000	3000
Rated Flow (GPM)	3	6	12	28	50
Temperature Range	-20° F to +300° F				
Cracking Spring Pressure	5 PSI				

ITEM#	PART NO.	T	L	⌀
1154	QCCV-14F-NPT-1/4"-5	1/4" NPT	50.7	19
1155	QCCV-38F-NPT-3/8"-5	3/8" NPT	62.2	24
1156	QCCV-12F-NPT-1/2"-5	1/2" NPT	79.2	30
1157	QCCV-34F-NPT-3/4"-5	3/4" NPT	82.9	36
1158	QCCV-1F-NPT-1"-5	1" NPT	106.1	45

DIMENSIONS IN MM