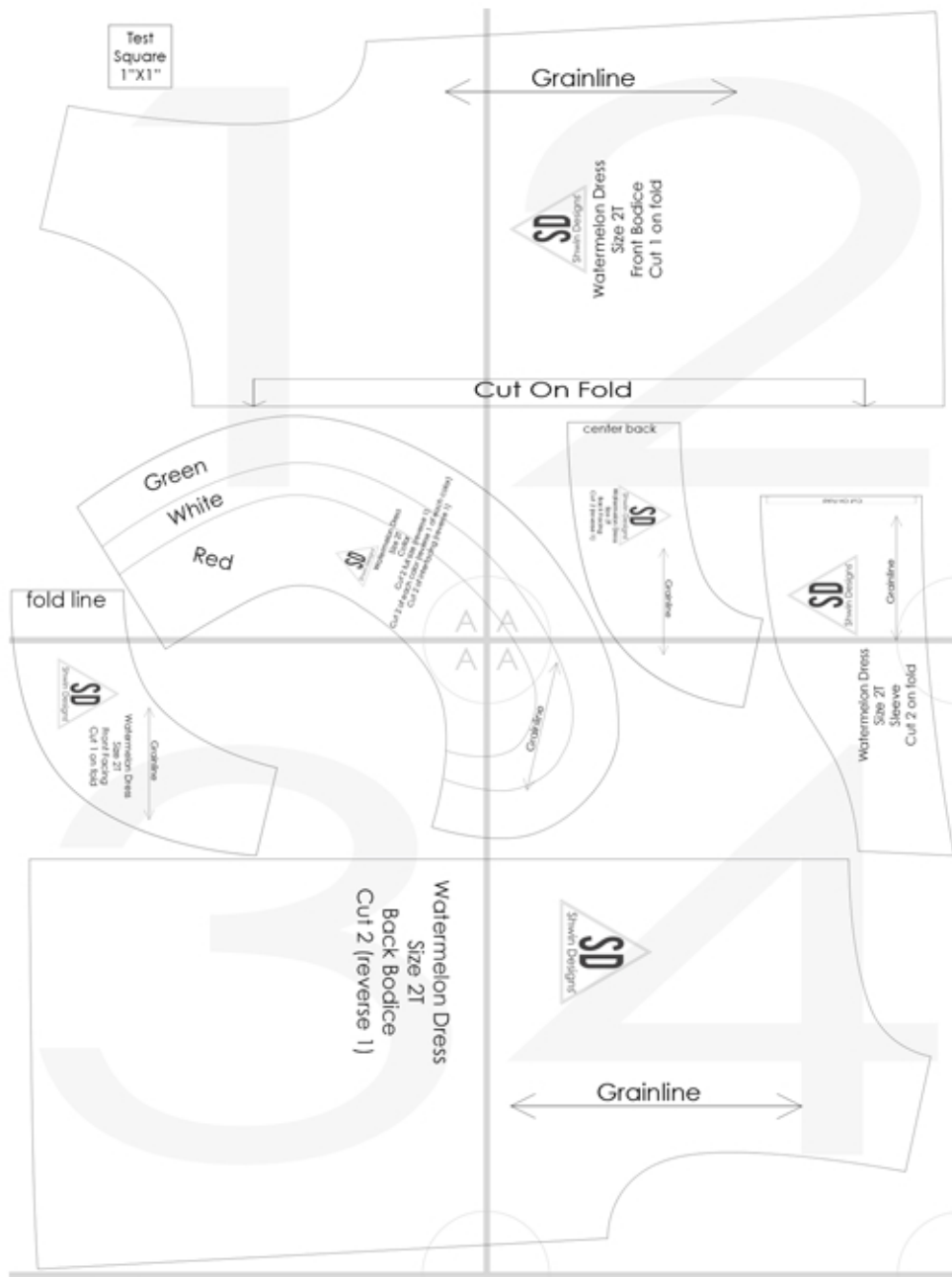


# Printing guide for Watermelon Dress

## Print at 100% Do Not Scale

For skirt cut 1 rectangle



Test  
Square  
1"X1"

Green

White

Red

fold line



Watermelon Dress  
Size 2T  
Collar

Cut 2 of each color (reverse 1)  
Cut 2 of each color (reverse 1 of each color)  
Cut 2 of interfacing (reverse 1)

A

Grainline



Watermelon Dress

Size 2T

Front Bodice

Cut 1 on fold

Cut On Fold

center back

SD  
Shwin Designs  
Watermelon Dress  
Size 2T  
Back Facing  
Cut 2 (reverse 1)

Grainline

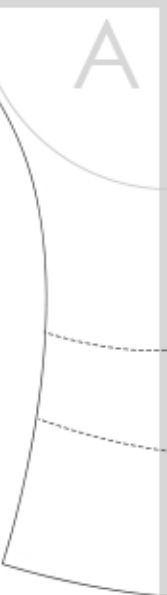
Cut On Fold



Grainline

A

A



Watermelon Dress  
Size 2T  
Back Bodice  
Cut 2 (reverse 1)

Grainline  
Watermelon Dress  
Size 2T  
Front Facing  
Cut 1 on fold



A

Grainline



Grainline

Watermelon Dress  
Size 2T  
Sleeve  
Cut 2 on fold