

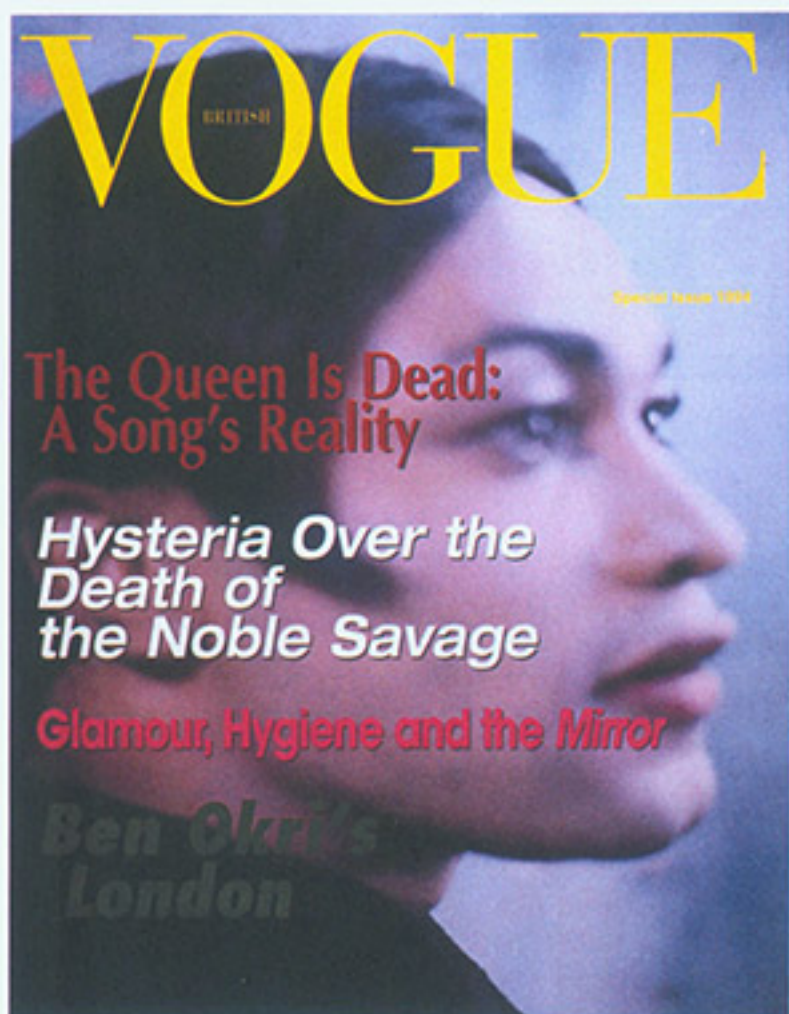
N

E

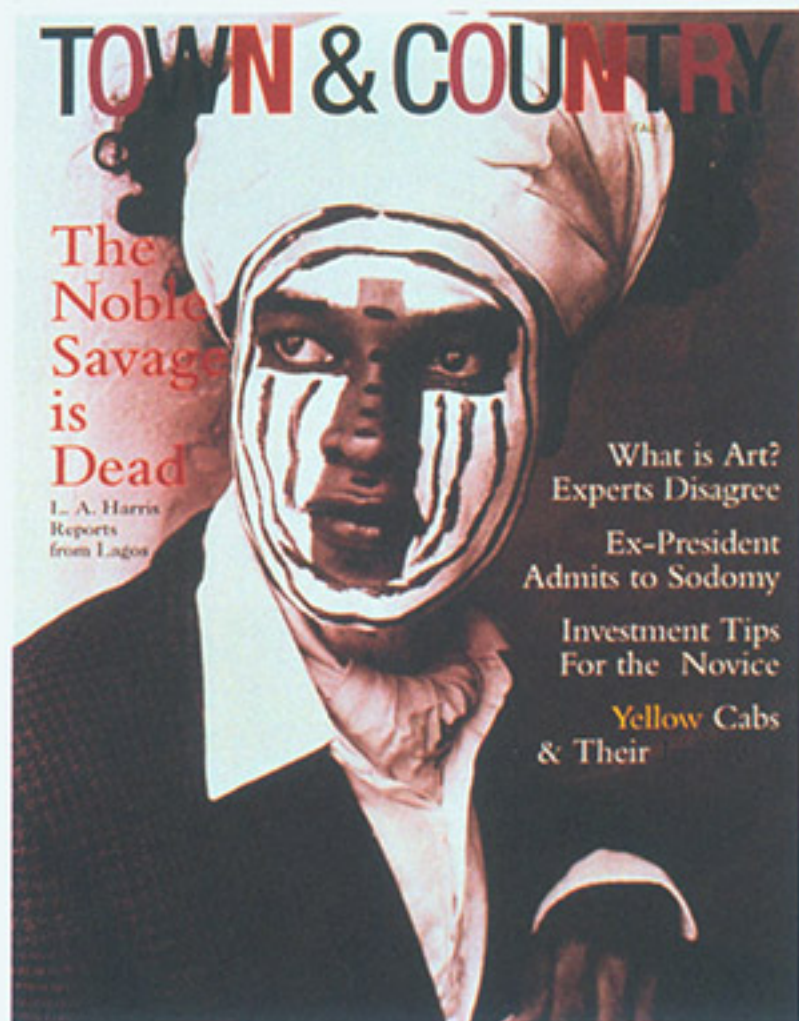
W

IKÉ UDÉ

Born ca. 1965 Lagos, Nigeria



Nigerian Vogue, from the
Cover Girl series. 1994–present
C-print, 11 x 8½ in.
Courtesy of the artist



Town & Country, from the
Cover Girl series. 1994–present
C-print, 11 x 8½ in.
Courtesy of the artist