

Project:	Type:
Date:	Comments:

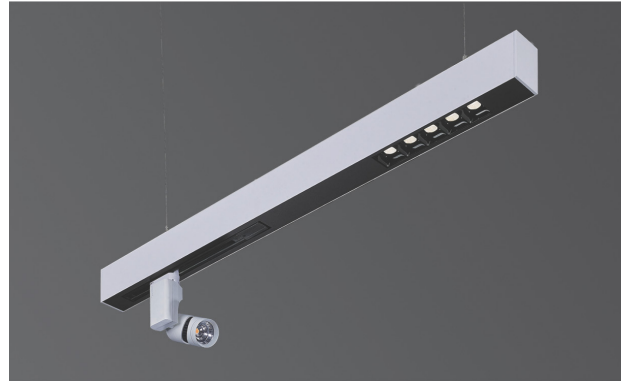
GENERAL: Indoor Architectural LED Fixture, Pendant, Surface Mounted and Recessed Installations.

LED: Samsung LED Chips, 2700-5000K, Dynamic White and RGBW Available, 80CRI (90 optional)

OPTICAL: Direct Illumination, 15°/35°/45° Beam Angle Options, Adjustable Spotlight

CONSTRUCTION: High Grade Aluminum Extrusion 2.6x3.5" with Combination of Louvre and Track with 5W Spotlight, Die Cast End Caps, PMMA Diffuser, Intergral Driver, Powder Coat Finish.

* 5-year warranty, 50,000 hour rated lifespan, IP40 (indoor). Custom size, lumen output and color temperature available.



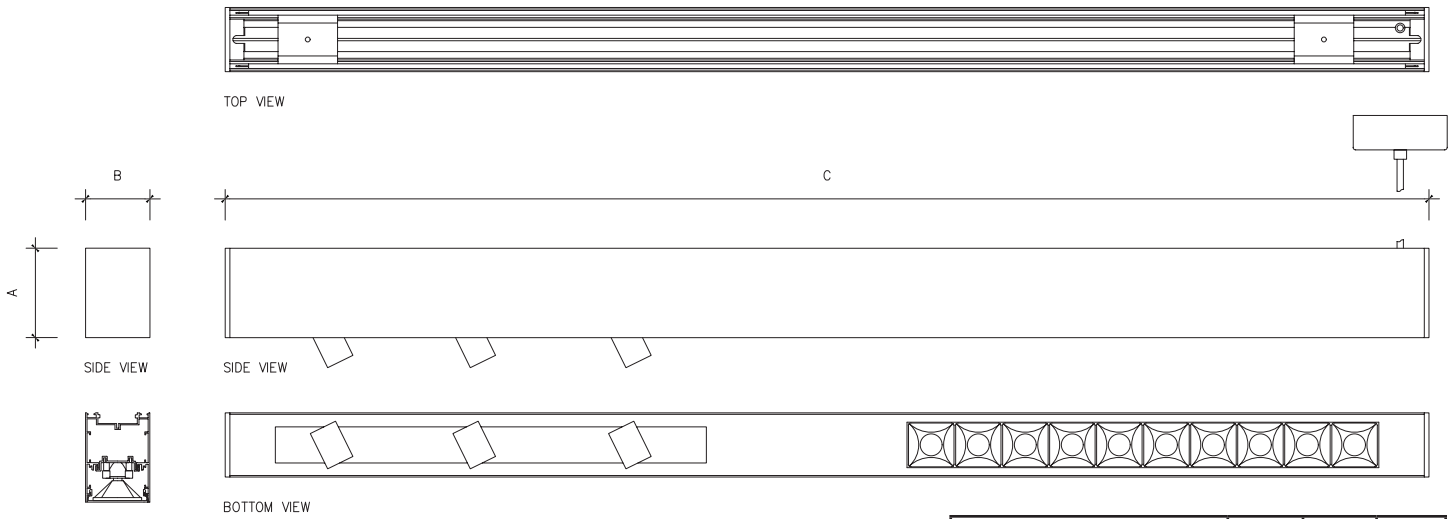
Model #	Length	Wattage	Distribution	Lumen Output
TechoLED-BX-3CS-D-2-25-30-U-D	2ft	25W (15+2x5W spotlights)	Direct	1710lm
TechoLED-BX-3CS-D-4-50-30-U-D	4ft	50W (30+4x5W spotlights)	Direct	3600lm
TechoLED-BX-3CS-D-8-60-30-U-D	8ft	60W (30+6x5W spotlights)	Direct	4700lm

Ordering Guide



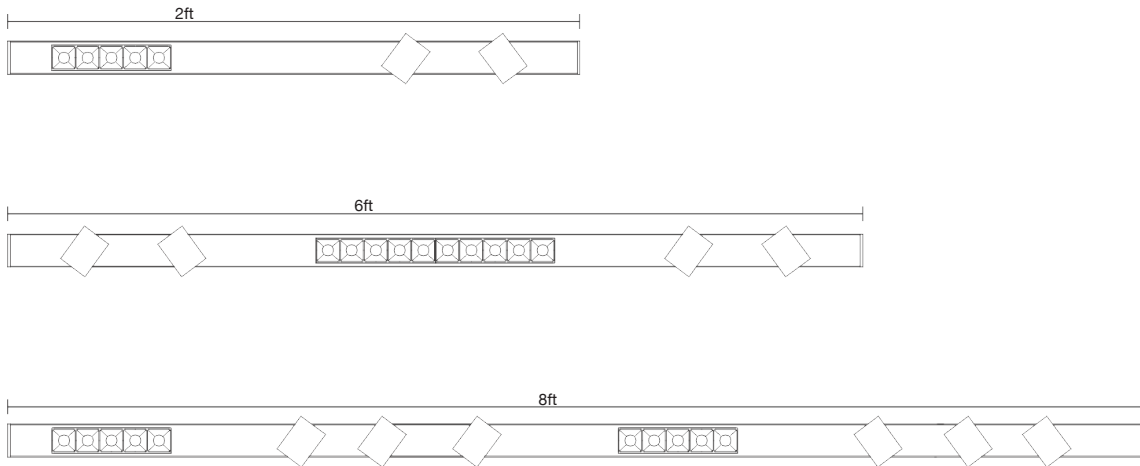
1-FIXTURE ID	2-DISTRIBUTION	3-LENGTH	4-WATTAGE	5-COLOR TEMPERATURE	6-BEAM ANGLE
BX-3CS	D - Direct	2 - 2ft 4 - 4ft 8 - 8ft C - Custom	25 - 25W 50 - 50W 60 - 60W C - Custom Wattage /Lumen Output	27 - 2700K 30 - 3000K 35 - 3500K 40 - 4000K 50 - 5000K D - Dynamic/Tunable White DT - Lutron Digital T-Series Dynamic/Tunable white driver RGB - RGB	15 - 15° 35 - 35° 45 - 45°
7-VOLTAGE	8-FINISH	9-MOUNTING	10-DRIVER OPTIONS	11-OPTIONS	12-OPTIONS (CONT.)
U - Universal 110-277V HV - 347V	S - Silver W - White B - Black C - Custom (RAL#)	P - Pendant (aircraft cables) S - Surface Mounted R - Recessed	D - 0-10V Dimming DA - Dali LDE1 - Lutron Hi-lume 1% EcoSystem, Soft-on, Fade- to-Black dimming	DFCSJ-OEM-RF - Lutron Vive In-Fixture control (RF only) FCJ/FCJS-ECO - Lutron wire- less PowPak (EcoSystem) FCJ/FCJS-010 - Lutron RF PowPak (0-10V) DFCSJ-OEM-OCC - Lutron Vive In-Fixture control (with daylight & occ/vac sensors)	EM - Emergency Battery Backup (remote) M - Motion Sensor (remote) BM - Bluetooth Mesh Smart Wireless Control by BubblyNet

Project:	Type:
Date:	Comments:



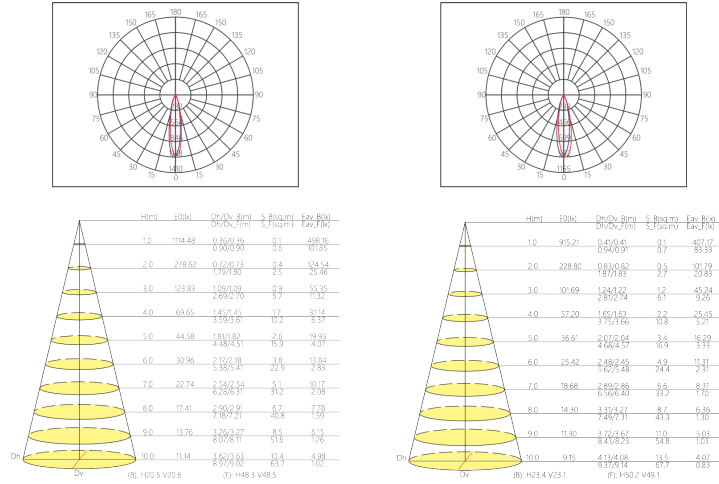
FIXTURE ID	A	B	C
TechoLED-BX-3CS-D-2-25-30-U-M	3.5"	2.6"	48"
TechoLED-BX-3CS-D-4-50-30-U-M	3.5"	2.6"	72"
TechoLED-BX-3CS-8-60-30-U-M	3.5"	2.6"	96"

Configurations



Project:	Type:
Date:	Comments:

Photometrics



Accessories

BX-3CS-AC	Pendant hanging kit (aircraft cable)
-----------	--------------------------------------

As we continue to innovate and improve our products, we reserve the right to edit, modify, and change our technical documentation.