

# John Cashin

778 903 2274

www.johncashin.com

john@johncashin.com

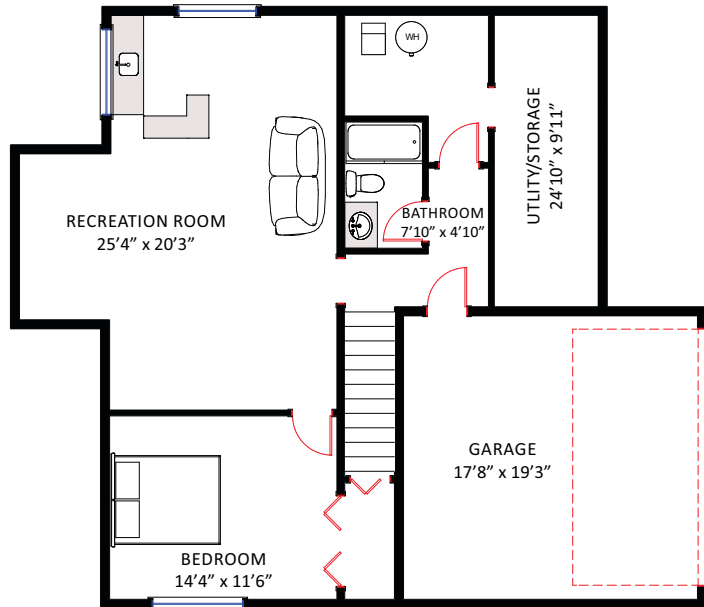
**24416 MCCLURE DR, MAPLE RIDGE**

LOWER LEVEL: 1,176 sq ft  
 MAIN LEVEL: 1,502 sq ft  
 UPPER LEVEL: 970 sq ft

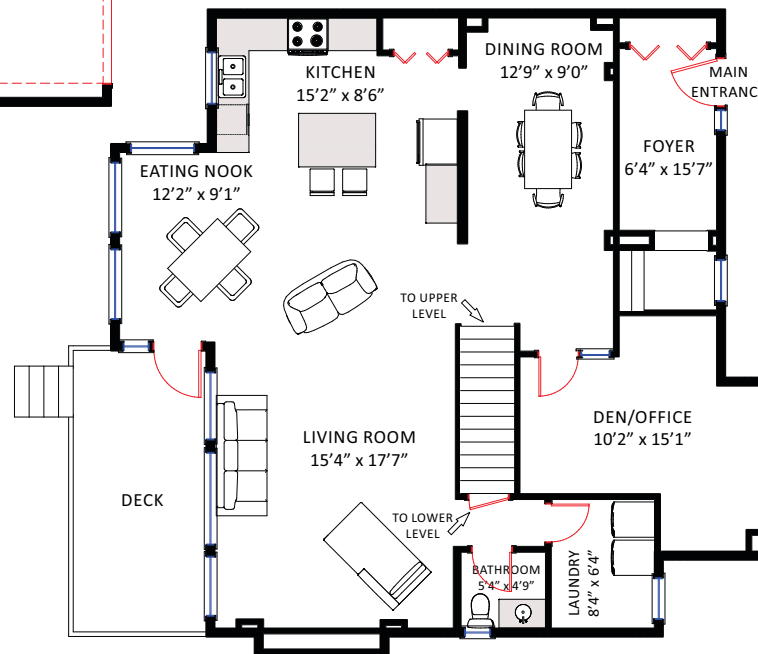
**TOTAL 3,648 sq ft**

OTHER AREAS  
 GARAGE (LOWER): 340 sq ft

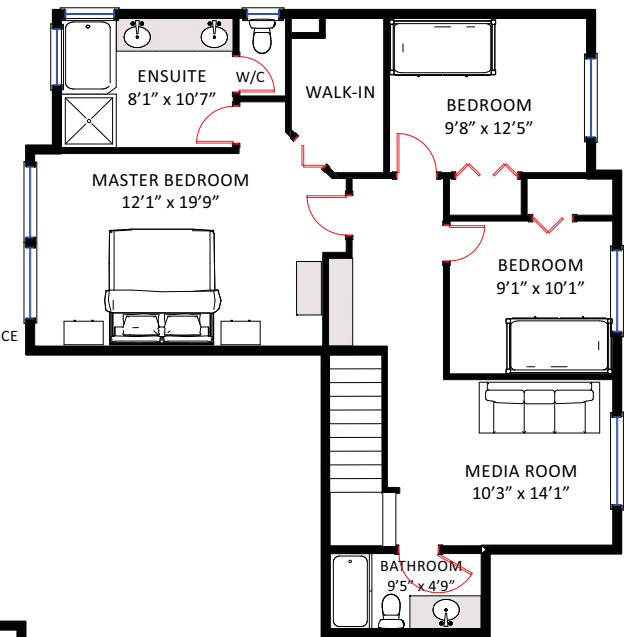
**LOWER LEVEL**  
(1,176 sq ft)



**MAIN LEVEL**  
(1,502 sq ft)



**UPPER LEVEL**  
(970 sq ft)



The information in these floor plans is believed to be accurate, but not guaranteed.

\* Estimate only. \*\*Finished square footage calculations for this property were made based on measured dimensions and may include unfinished areas, openings in floors not associated with stairs, or openings in floors exceeding the area of associated stairs

