

# Brazos Valley Symphony

## Tuba Audition Repertoire

---

Vaughn Williams:	Concerto for Bass Tuba
Wagner:	Die Walküre
Berlioz:	Symphony Fantastic
Mahler:	Symphony No. 2
Berlioz:	La damnation Faust
Vorspiel:	Die Meistersinger von Nürnberg
Prokofiev:	Symphony No. 5

First performed by Philip Catelinet at the L.S.O. Jubilee Concert, 13th June, 1954.

# CONCERTO FOR BASS TUBA

R. VAUGHAN WILLIAMS

Allegro moderato (♩ = 96)

3  
*p* cantabile

cresc. *f*

1

1 *p*

2

*p* cantabile

3 *f*

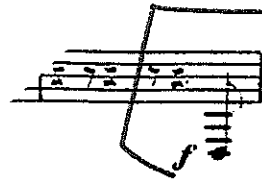
4 (♩ = ♩) *p* dolce

5 9

Tuba

# Die Walküre

- Wagner



6 Tuba

# Sy-Fantastic

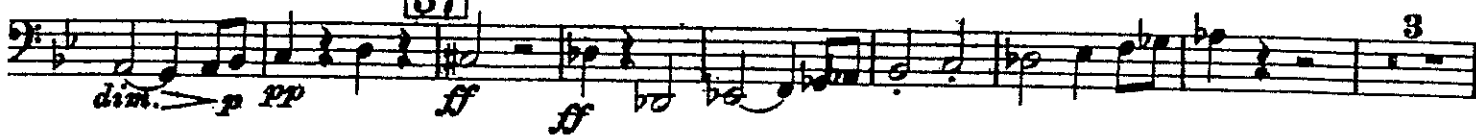
Tuba I.

Berlioz

56



57



58



rall. poco a tempo



tuba

Sy No 2

- Mahler

Feierlich und gemessen, ohne zu schleppen

pp

3

1 2 3 4

4 6 7 8 9 10

La damnation Faust

- Berlioz

20

ff

ff

21

3

p

f

f

22

# Vorspiel zur Oper Die Meistersinger von Nürnberg

TUBA

Richard Wagner

Sehr gehalten  
(Molto tenuto)

5 Jaber sehr markiert  
(ma molto marcato)

allmählich immer stärker  
(poco a poco più di forza)

sehr gebunden  
(molto legato)

L 3

Sy No. 5 - Prokofiev

3 tuba

mp mf

Handwritten note: *...passage...*

Measures 1-3 of the tuba part. Measure 1 starts with a *mp* dynamic. Measure 2 has a *mf* dynamic. The music is in a bass clef with a key signature of two flats and a 4/4 time signature.

4

espress.

*f* *mf* *f*

Measures 4-5. Measure 4 is marked *f* and includes the instruction *espress.* Measure 5 is marked *mf*. Measure 6 is marked *f*. The music continues in the same bass clef and key signature.

5

*mf* *f*

Measures 6-7. Measure 6 is marked *mf*. Measure 7 is marked *f*. The music continues in the same bass clef and key signature.

Measures 8-13. The music continues in the same bass clef and key signature, ending with a fermata and an arrow pointing to the right.

14

*f* *f*

Measures 14-15. Measure 14 is marked *f*. Measure 15 is marked *f*. The music continues in the same bass clef and key signature.