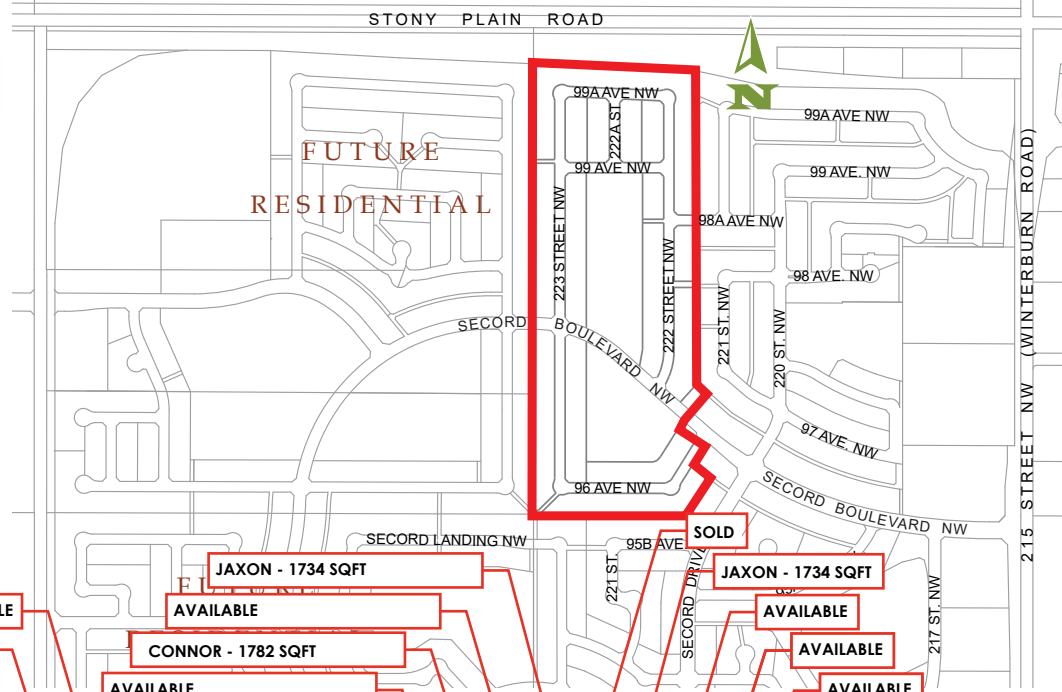




# SECORD

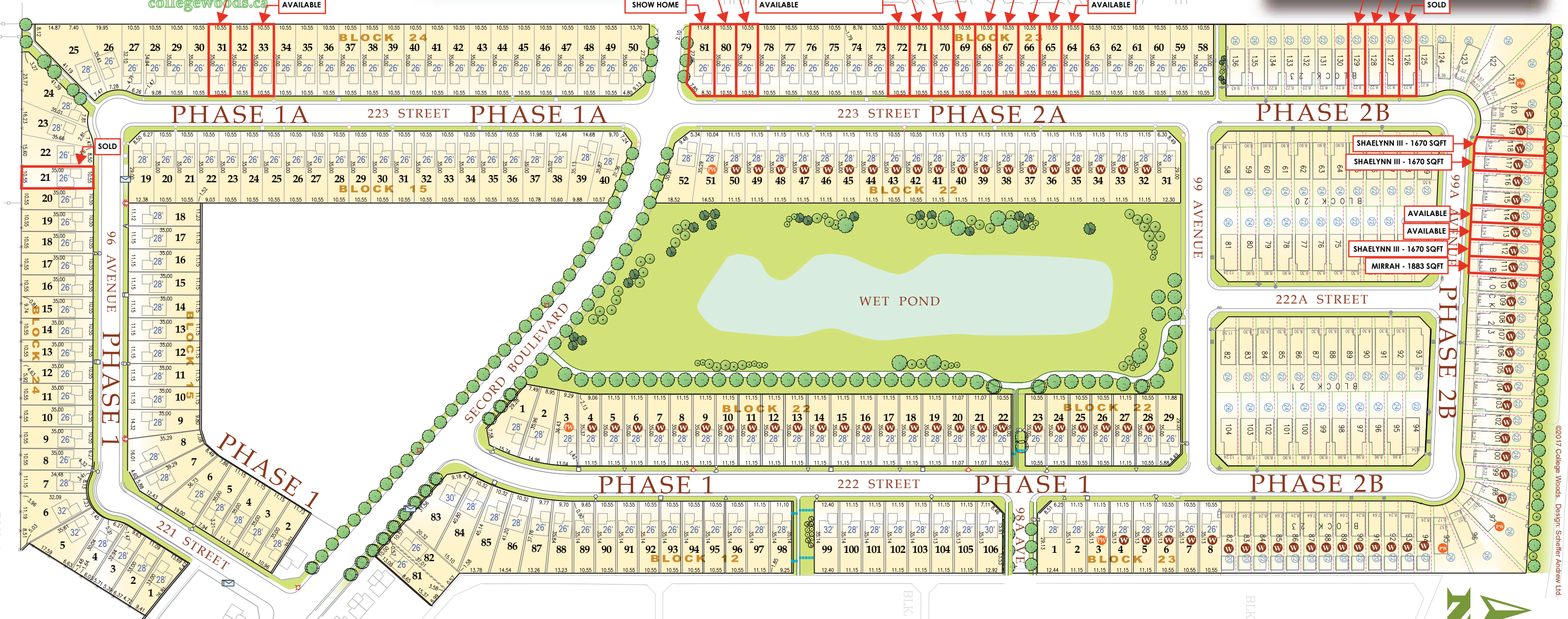
STAGE 6 • PHASE 2

collegewoods.ca



### LEGEND

- W** Full Walkout **PW** Partial Walkout
- 32'** Suggested House Location & Maximum House Width (feet)
- 35.00** Lot Measurements (meters)
- Deciduous Trees
- Coniferous Trees
- Trail
- Fire Hydrant Pedestal
- Light Pole Transformer
- Bollard Community Mailbox



Note: This plan is conceptual only. The location of local roads and block lines are subject to revision at the time of subdivision. All information shown on this plan is deemed accurate to the date of printing. For more information on land use please contact the City of Edmonton.