

THE REFTEKK ADVANTAGE

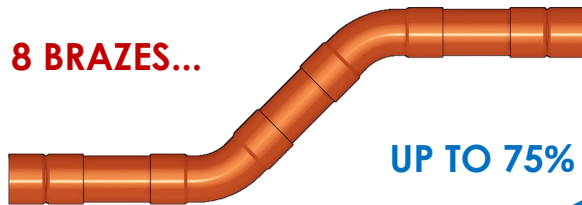
BENDABLE TUBING & BRAZING TECHNIQUES

— FEWER BRAZES = FEWER LEAKS —

See how bendable-quality, half-hard (H55) tubing can reduce leaks, labor, and installation time!

TRADITIONAL H58 HARD COPPER

8 BRAZES...



BENDABLE-QUALITY H55 COPPER

2 BRAZES!



UP TO 75% FEWER BRAZES!

FIELD-BENDABLE

PLUS

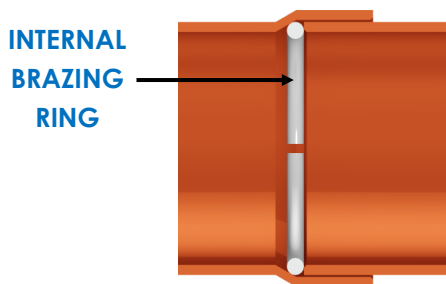
FIELD-SWAGEABLE

- | | |
|--|--|
| <ul style="list-style-type: none"> • Cold-bendable, no annealing needed. • No brazes required. • Lower pressure drop. • Less time spent prepping tubing. | <ul style="list-style-type: none"> • Socket depths designed for brazing. • Half the brazes vs. standard couplings. • Less time spent prepping tubing. • Less time spent purging and brazing. |
|--|--|

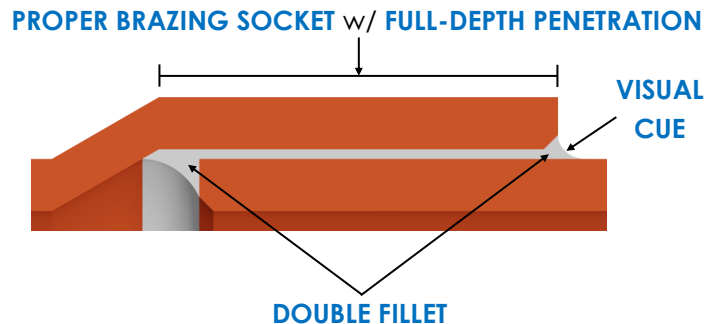
— NEW BRAZING TECHNIQUES = FEWER LEAKS —

Find out how brazing rings and proper socket depths enhance the brazing process!

Swaged Joint Before Braze



Swaged Joint After Braze (Enlarged)



INTERNAL BRAZING RING: Brazing material in a pre-formed ring for quick and repeatable brazes.

DOUBLE FILLET: Fillet is ensured on the inside AND outside of brazed joint.

FULL-DEPTH PENETRATION: Inside-out brazing ensures full depth penetration every time w/ visual cue.

VISUAL CUE: See brazing material appear to know the joint is complete.

PREVENT OVERHEATING: Visual cue helps prevent overheating and volatilizing the phosphorous flux.

PROPER BRAZING SOCKET: Standard fittings are designed for soldering, NOT Brazing!
Proper brazing sockets are approximately half as deep.

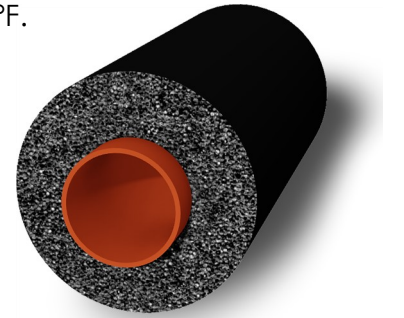
THE REFTEKK ADVANTAGE

EPDM INSULATION & PROPER PIPE SUPPORTS

— EPDM: THE ONLY INSULATION FOR VRV/VRF —

Among many other advantages, EPDM is the only insulation material allowed by VRV/VRF manufacturers.

- Exceeds VRV/VRF manufacturers' required operating temperatures of 248 °F.
 - Nearly ALL other insulation materials will fail or degrade at this temp.
- Closed-cell + non-polar + ultra-low permeability = less moisture in building.
- Won't leach chlorides if wet, which can corrode the piping over time.
- No jacketing required for UV or ozone protection.
- Thicknesses up to 3" to meet new energy standards.



- EPDM now available on insulated coils (line-sets)!
- Thicknesses up to 1-1/2" to help meet new energy standards.
 - (Some states may require dual layer insulation)

— PIPE SUPPORTS: THE CRUCIAL FOUNDATION —

Maintaining full insulation thickness at pipe supports is vital to prevent moisture, mold, and structure damage.

CUSH-A-THERM

- Rigid and adherable support maintains full and continuous insulation.
- Packaged with correct metal clamps for easy purchasing & install.
- Rated up to 257 °F.
- UV and weather resistant.



SADDLE SUPPORTS

- Easily support line sets and indoor tubing while minimizing crush of the insulation.
- Easily anchors to Unistrut with included hardware.
- Allows for expansion and contraction of piping system.
- For use indoors and horizontal applications only.

