

|                   |       |
|-------------------|-------|
| Job Name:         |       |
| System Reference: | Date: |



### GENERAL FEATURES

- Square edge, sleek design
- 3D turbo fan enabling increased airflow
- Built-in 3D i-see Sensor™\*
- Improved installation features\*
- Occupancy detection\*
- Energy saving features\*
- Improved occupant comfort
- Four fan speed settings including auto-fan
- Corner pocket design for simplified installation
- Built-in condensate lift mechanism designed to provide up to 33-7/16" of lift
- Ventilation air intake supported

\*Requires a PAR-32MAA-J controller

### ACCESSORIES

- Air Outlet Shutter Plate (3 pieces) (PAC-SJ37SP-E)
- High Efficiency Filter (PAC-SH59KF-E)
- Multi Function Casement (PAC-SJ41TM-E)
- Wireless Signal Receiver (PAR-SR3LA-E)
- CN24 Relay Kit (CN24RELAY-KIT-CM3)

### SPECIFICATIONS

| Capacity* |       |        |
|-----------|-------|--------|
| Cooling   | Btu/h | 36,000 |
| Heating   | Btu/h | 40,000 |

\* Cooling / Heating capacity indicated at the maximum value at operation under the following conditions:

Cooling | Indoor: 80° F (26.7° C) DB / 67° F (19° C) WB; Outdoor 95° F (35° C) DB  
 Heating | Indoor: 70° F (21.1° C) DB; Outdoor 47° F (8.3° C) DB / 43° F (6° C) WB

| Electrical                     |                           |      |
|--------------------------------|---------------------------|------|
| Electrical Power Requirements  | 1-phase, 208 / 230V, 60Hz |      |
| Minimum Circuit Ampacity (MCA) | A                         | 0.92 |
| Recommended Fuse Size          | A                         | 15   |

| External Dimensions (H x W x D) |         |  |
|---------------------------------|---------|--|
| Unit                            | In.(mm) | 11-3/4 × 33-3/32 × 33-3/32<br>(298 × 840 × 840)  |
| Grill (PLP-40EAEU)              | In.(mm) | 1-9/16 × 37-13/32 × 37-13/32<br>(40 × 950 × 950) |

| Net Weight         |          |         |
|--------------------|----------|---------|
| Unit               | Lbs (kg) | 55 (25) |
| Grill (PLP-40EAEU) | Lbs (kg) | 11 (5)  |

| External Finish    |                                |
|--------------------|--------------------------------|
| Unit               | Galvanized steel sheet         |
| Grill (PLP-40EAEU) | White - MUNSELL (6.4Y 8.9/0.4) |

|           |           |
|-----------|-----------|
| Coil Type | Cross fin |
|-----------|-----------|

| Fan                               |               |                        |
|-----------------------------------|---------------|------------------------|
| Type x Quantity                   | Turbo fan x 1 |                        |
| Airflow Rate (Low-Mid2-Mid1-High) | CFM           | 777 - 883 - 989 - 1095 |
| Motor Type                        | DC motor      |                        |
| Motor Output                      | kW            | 0.12                   |
| Motor F.L.A.                      | A             | 0.73                   |

|            |   |
|------------|---|
| Air Filter | PP honeycomb<br>(long life filter, anti-bacterial type) |
|------------|---|

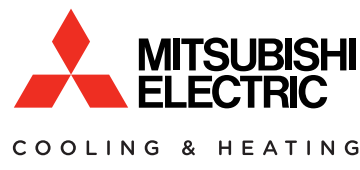
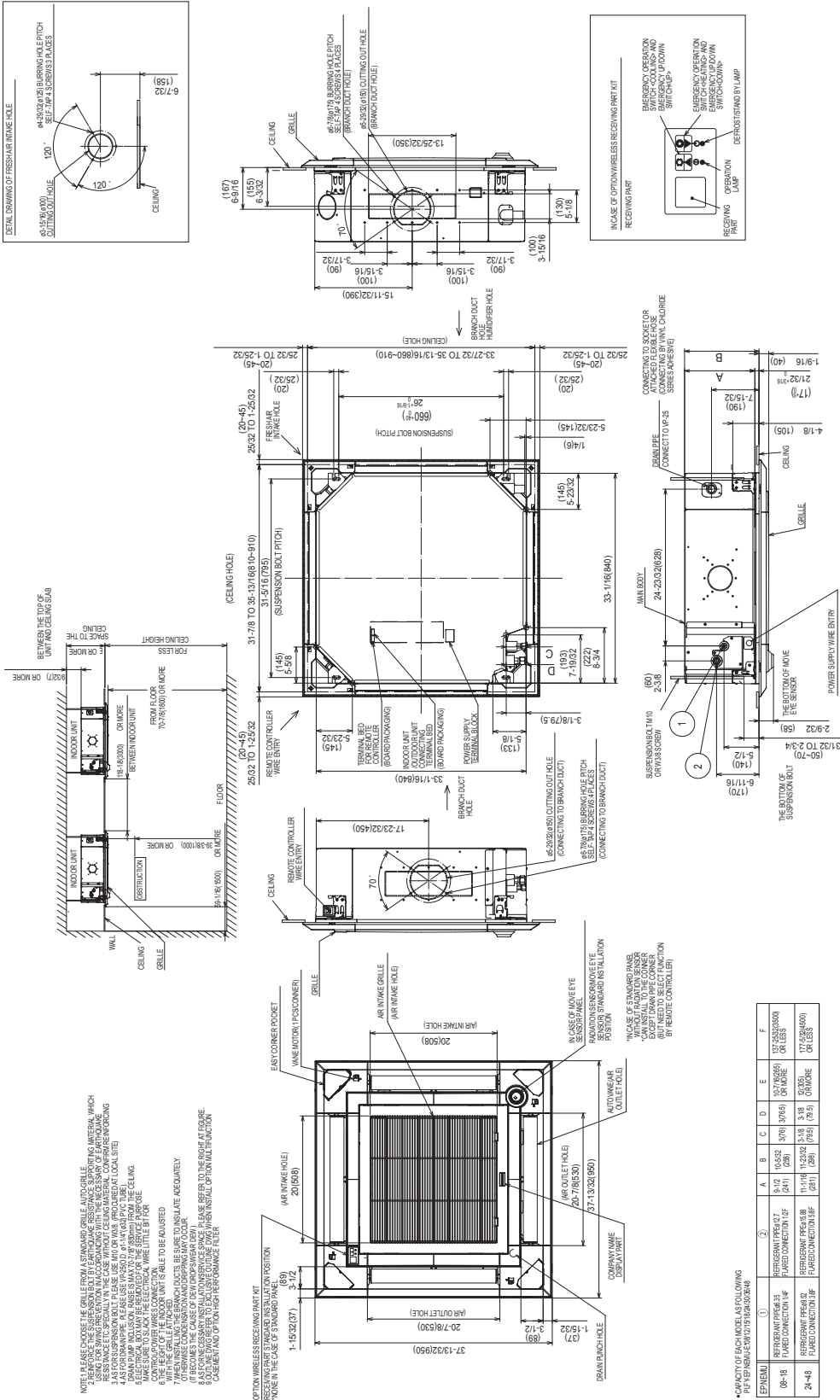
| Refrigerant Piping Diameter |         |                   |
|-----------------------------|---------|-------------------|
| Liquid (High Pressure)      | In.(mm) | 3/8 (9.52) Flare  |
| Gas (Low Pressure)          | In.(mm) | 5/8 (15.88) Flare |

|                       |         |                 |
|-----------------------|---------|-----------------|
| Field Drain Pipe Size | In.(mm) | O.D. 1-1/4 (32) |
|-----------------------|---------|-----------------|

| Sound Pressure Level |       |                   |
|----------------------|-------|-------------------|
| Low-Mid2-Mid1-High   | dB(A) | 35 - 37 - 39 - 41 |

# Model: PLFY-EP36NEMU-E – DIMENSIONS

Units: mm (in.)



1340 Satellite Boulevard, Suwanee, GA 30024  
 Toll Free: 800-433-4822 www.mehvac.com

