

Job Name: \_\_\_\_\_ Location: \_\_\_\_\_

Drawing Reference: \_\_\_\_\_ Schedule No. \_\_\_\_\_

System No.: \_\_\_\_\_ Date: \_\_\_\_\_



### GENERAL FEATURES

- R410A refrigerant
- 7-7/8" (200 mm) high for low ceiling heights
- Six sizes from 6,000 to 24,000 Btu/h
- Ducted fan coil supporting multiple configurations for flexible installation
- Four external static pressure options from 0.02" WG to 0.20" WG; factory set at 0.06" WG
- Choice of fan speed settings
- Built-in condensate lift; lifts to 21-11/16" (550 mm)
- Auto fan mode
- Quiet operation from 22 to 40 dB(A)

### SPECIFICATIONS

#### Capacity\*

Cooling.....24,000 Btu/h  
 Heating.....27,000 Btu/h

#### Power

Power Source.....208 / 230V, 1-phase, 60Hz

#### Power Consumption

Cooling.....0.12 kW  
 Heating.....0.10 kW

#### Current

Cooling.....0.93 A  
 Heating.....0.83 A

Minimum Circuit Ampacity (MCA).....1.17 A

Maximum Overcurrent Protection (MOCP) Fuse.....15 A

External Finish.....Galvanized Steel Sheets

#### External Dimensions

Inches.....7-7/8 h x 46-7/8 w x 27-9/16 d  
 mm.....200 h x 1,190 w x 700 d

Net Weight.....62 lbs. / 28 kg

Coil Type.....Cross Fin  
 (Aluminum Fin and Copper Tube)

#### Fan

Type x Quantity.....Sirocco Fan x 4  
 Airflow Rate (Low - Mid - High).....423 - 565 - 706 cfm  
 External Static Pressure.....0.02 - 0.06 - 0.14 - 0.20"WG

#### Motor

Type.....DC Motor  
 Output.....0.096 kW

Air Filter.....Polypropylene Honeycomb

#### Refrigerant Piping Dimensions

Liquid (High Pressure).....3/8" / 9.52 mm Brazed  
 Gas (Low Pressure).....5/8" / 15.88 mm Brazed

Drainpipe Dimension.....O.D. 1-1/4" / 32 mm

#### Sound Pressure Levels

Low - Mid - High.....30 - 35 - 40 dB(A)

### OPTIONS

- External Heater Adapter.....CN24RELAY-KIT-CM3
- Filter Box (Includes 1" MERV 8 filter).....FBL1-3
- Bottom Return Adapter Plate.....BRP-3

\* Cooling / Heating capacity indicated at the maximum value at operation under the following conditions:

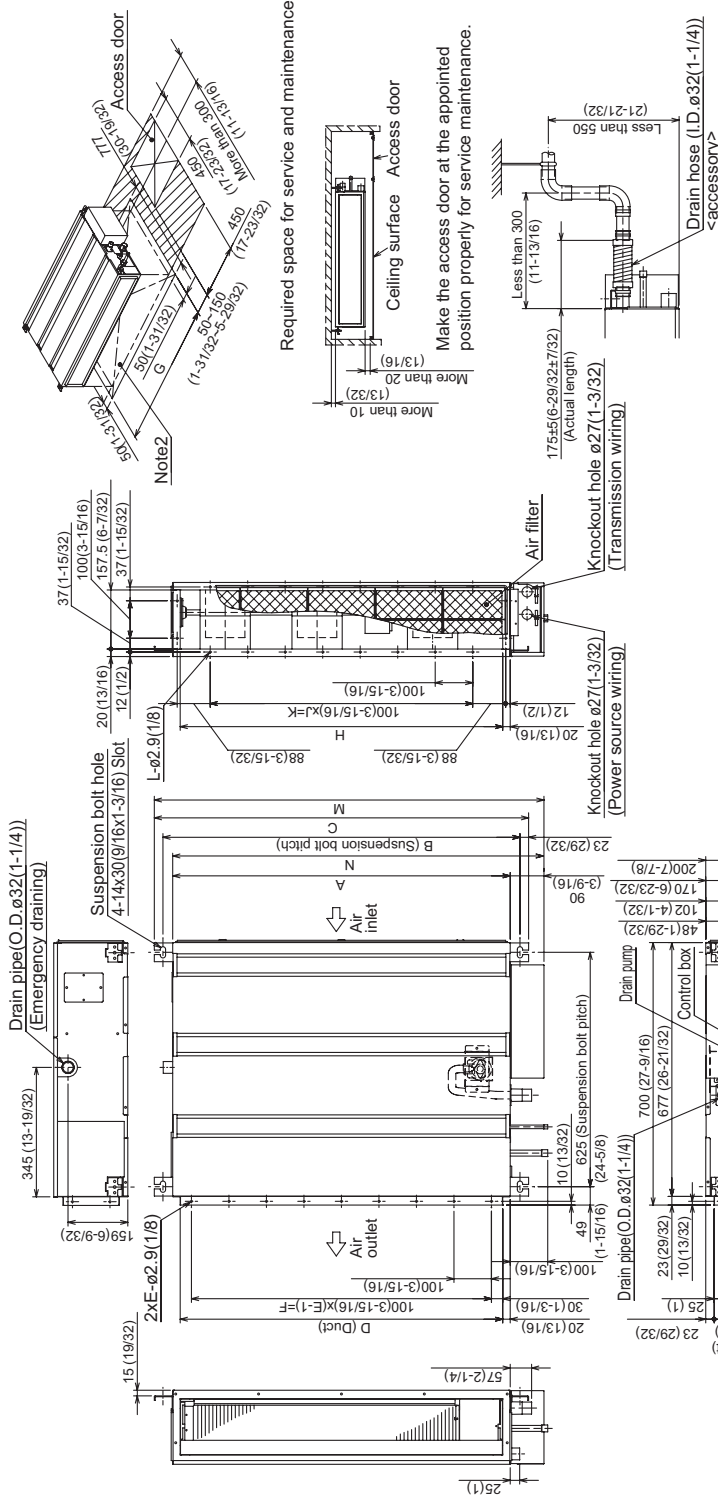
Cooling: Indoor 80°F (27°C) DB / 67°F (19°C) WB, Outdoor 95°F (35°C) DB

Heating: Indoor 70°F (21°C) DB, Outdoor 47°F (8°C) DB / 43°F (6°C) WB

**Note:** Ventilation air: Providing sufficient ventilation air is an important part of every building design. ASHRAE Standard 62 provides the minimum ventilation air requirement. Also, check local codes.

# Model: PEFY-P24NMSU-E – DIMENSIONS

Unit : mm(in)



- Note
1. Use M10 screw for the Suspension bolt (field supply).
  2. Keep the service space for the maintenance at the bottom.
  3. This chart indicates for PEFY-P15-18NMSU-E models, which has 3 fans.  
PEFY-P06~12NMSU-E models have 2 fans.  
PEFY-P24NMSU-E model have 4 fans.
  4. In case of the inlet duct is used, remove the air filter (supply with the unit), then install the filter (field supply) at suction side.

\*1: R410A outdoor unit  
\*2: R22 outdoor unit

Model	A	B	C	D	E	F	G	H	J	K	L	M	N	① Gas pipe	② Liquid pipe
PEFY-P06,08,12NMSU-E	700 (27-9/16)	752 (29-5/8)	798 (31-3/8)	660 (25-9/16)	7	600 (23-5/8)	800 (31-1/2)	660 (26)	5	500 (19-11/16)	16	839 (33-11/16)	790 (31-1/8)	ø12.7 (1/2)	ø6.35 (1/4)
PEFY-P15NMSU-E	900 (35-7/16)	952 (37-1/2)	998 (39-5/16)	860 (33-7/8)	9	800 (31-1/2)	1000 (39-3/8)	860 (33-7/8)	7	700 (27-9/16)	20	1039 (40-25/32)	990 (39)	ø12.7 (1/2) *1 ø15.88 (5/8) *2	ø6.35 (1/4) ø5.52 (3/8)
PEFY-P18NMSU-E	1100 (43-5/16)	1152 (45-3/8)	1198 (47-3/16)	1060 (41-3/4)	11	1000 (39-3/8)	1200 (47-1/4)	1060 (41-3/4)	9	900 (35-7/16)	24	1239 (49-23/32)	1190 (46-7/8)	ø15.88 (5/8)	ø9.52 (3/8)



Mitsubishi Electric Air Conditioning & Refrigeration Systems Works acquired ISO 9001 certification under Series 9000 of the International Standard Organization (ISO) based on a review of quality warranties for the production of refrigeration and air conditioning equipment.

ISO Authorization System  
The ISO 9000 series is a plant authorization system relating to quality warranties as stipulated by the ISO. ISO 9001 certifies quality warranties based on the "design, development, production, installation and auxiliary services" for products built at an authorized plant.



**HVAC Advanced Products Division**  
Mitsubishi Electric & Electronics USA, Inc.  
3400 Lawrenceville Suwanee Rd.  
Suwanee, GA 30024  
Tele: 678-376-2900 • Fax: 800-889-9904  
Toll Free: 800-433-4822 (#4)  
www.mehvac.com  
Specifications are subject to change without notice.



Mitsubishi Electric Air Conditioning & Refrigeration Systems Works acquired environmental management system standard ISO 14001 certification.

The ISO 14000 series is a set of standards applying to environmental protection set by the International Standard Organization (ISO).