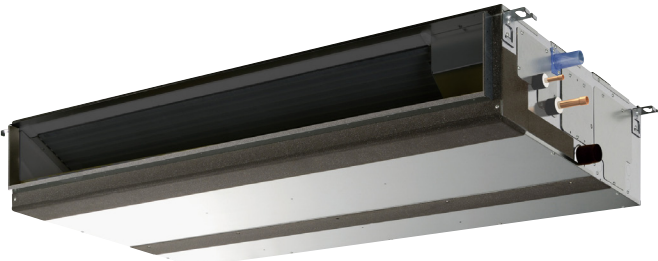


Job Name:	Location:
Drawing Reference:	Schedule No.
System No.:	Date:



### GENERAL FEATURES

- R410A refrigerant
- 9-7/8" (250mm) high for low ceiling heights
- Eleven sizes from 6,000 to 54,000 Btu/h
- Ducted fan coil supporting multiple configurations for flexible installation
- Five static pressure settings from 0.14"WG up to 0.60"WG
- Choice of fan speed settings
- Built-in condensate lift; lifts to 27-9/16" (700mm)
- Auto fan mode
- Quiet operation from 26 to 45 dB(A)

### SPECIFICATIONS

#### Capacity\*

Cooling.....18,000 Btu/h  
 Heating.....20,000 Btu/h

#### Power

Power Source.....208 / 230V, 1-phase, 60Hz

#### Power Consumption

Cooling.....0.11 kW  
 Heating.....0.09 kW

#### Current

Cooling.....0.77 A  
 Heating.....0.66 A  
 Minimum Circuit Ampacity (MCA).....1.56 A  
 Maximum Overcurrent Protection (MOCP) Fuse.....15 A

**External Finish**.....Galvanized-steel Sheet

#### External Dimensions

Inches.....9-7/8 H x 35-7/16 W x 28-7/8 D  
 mm.....250 H x 900 W x 732 D

#### Net Weight

Unit.....58 lbs. / 26 kg

**Coil Type**.....Cross Fin  
 (Aluminum Plate Fin and Copper Tube)

#### Fan

Type x Quantity.....Sirocco Fan x 1  
 Airflow Rate (Low-Mid-High).....424 - 512 - 600 CFM  
 External Static Pressure.....0.14 - 0.20 - 0.28 - 0.40 - 0.60"WG  
 (External static pressure is factory set to 0.20"WG)

#### Motor

Type.....DC Brushless Motor  
 Output.....0.085 kW

**Air Filter**.....Polypropylene Honeycomb

#### Refrigerant Piping Dimensions

Liquid (High Pressure).....1/4" / 6.35 mm (Brazed)  
 Gas (Low Pressure).....1/2" / 12.7 mm (Brazed)

**Drainpipe Dimension**.....O.D. 1-1/4" / 32 mm

#### Sound Pressure Levels

Low-Mid-High.....28 - 32 - 35 dB(A)

### OPTIONS

- External Heater Adapter.....CN24RELAY-KIT-CM3
- Filter Box (Includes 2" MERV 13 filter).....FBM2-2

\* Cooling / Heating capacity indicated at the maximum value at operation under the following conditions:

Cooling: Indoor 80°F (27°C) DB / 67°F (19°C) WB, Outdoor 95°F (35°C) DB

Heating: Indoor 70°F (21°C) DB, Outdoor 47°F (8°C) DB / 43°F (6°C) WB

**Note:** Ventilation air: Providing sufficient ventilation air is an important part of every building design. ASHRAE Standard 62 provides the minimum ventilation air requirement. Also, check local codes.



