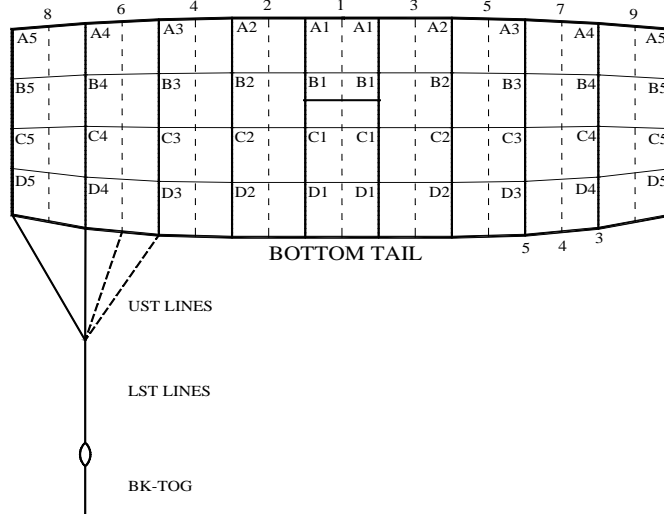




Performance Designs, Inc
 1300 E Int'l Speedway Blvd
 DeLand FL 32724
 Telephone: 386-738-2224
 Fax: 386-734-8297

LINE TRIM CHART
FOR
SABRE2 097 - 170



	Measurement in Inches						Measurement in Centimeters					
	SA-097	SA-107	SA-120	SA-135	SA-150	SA-170	SA-097	SA-107	SA-120	SA-135	SA-150	SA-170
A1	99 5/8	104 3/4	110 3/4	117 1/2	123 7/8	131 7/8	253.0	266.1	281.3	298.5	314.6	335.0
A1-B1	1 7/8	1 7/8	2 1/8	2 1/4	2 3/8	2 5/8	4.8	4.8	5.4	5.7	6.0	6.7
A1-C1	6 7/8	7 1/4	7 3/4	8 1/4	8 7/8	9 1/2	17.5	18.4	19.7	21.0	22.5	24.1
A1-D1	13 3/4	14 1/2	15 1/2	16 1/2	17 1/2	18 7/8	34.9	36.8	39.4	41.9	44.5	47.9
A2	99 5/8	104 3/4	110 3/4	117 1/2	123 7/8	131 7/8	253.0	266.1	281.3	298.5	314.6	335.0
A2-B2	1 7/8	2	2 1/4	2 1/4	2 1/2	2 5/8	4.8	5.1	5.7	5.7	6.4	6.7
A2-C2	6 7/8	7 1/4	7 3/4	8 1/4	8 7/8	9 1/2	17.5	18.4	19.7	21.0	22.5	24.1
A2-D2	13 3/4	14 1/2	15 1/2	16 5/8	17 5/8	19 1/4	34.9	36.8	39.4	42.2	44.8	48.9
A3	99 3/4	104 3/4	110 7/8	117 5/8	123 7/8	132	253.4	266.1	281.6	298.8	314.6	335.3
A3-B3	2	2 1/8	2 1/4	2 3/8	2 5/8	2 3/4	5.1	5.4	5.7	6.0	6.7	7.0
A3-C3	7	7 1/4	7 7/8	8 3/8	8 7/8	9 1/2	17.8	18.4	20.0	21.3	22.5	24.1
A3-D3	13 5/8	14 1/2	15 1/2	16 1/2	17 1/2	19 1/4	34.6	36.8	39.4	41.9	44.5	48.9
A4	99 3/4	104 3/4	110 7/8	117 5/8	123 7/8	132	253.4	266.1	281.6	298.8	314.6	335.3
A4-B4	2 1/8	2 1/4	2 3/8	2 5/8	2 3/4	2 7/8	5.4	5.7	6.0	6.7	7.0	7.3
A4-C4	6 3/4	7 1/8	7 5/8	8 1/4	8 3/4	9 3/8	17.1	18.1	19.4	21.0	22.2	23.8
A4-D4	13 1/8	13 7/8	14 3/4	15 7/8	16 3/4	18	33.3	35.2	37.5	40.3	42.5	45.7
A5	99 3/4	104 3/4	111	117 3/4	124	132 1/8	253.4	266.1	281.9	299.1	315.0	335.6
A5-B5	2 3/8	2 5/8	2 3/4	2 7/8	3	3 1/4	6.0	6.7	7.0	7.3	7.6	8.3
A5-C5	6 5/8	7 1/8	7 1/2	8 1/8	8 5/8	9 1/4	16.8	18.1	19.1	20.6	21.9	23.5
A5-D5	11 5/8	12 3/8	13 1/8	14	14 7/8	16	29.5	31.4	33.3	35.6	37.8	40.6
LST	76 7/8	80 1/2	85	89 7/8	92 1/8	99 7/8	195.3	204.5	215.9	228.3	234.0	253.7
A5-UST1	13 1/8	13 5/8	14 1/8	14 3/4	13 1/8	15 5/8	33.3	34.6	35.9	37.5	33.3	39.7
A5-UST3	10	10 3/8	10 5/8	11 1/8	9 1/4	11 1/2	25.4	26.4	27.0	28.3	23.5	29.2
A5-UST4	10 7/8	11 3/8	11 5/8	12 1/8	10 3/8	12 3/4	27.6	28.9	29.5	30.8	26.4	32.4
A5-UST5	13 1/2	14	14 5/8	15 1/4	13 3/4	16 1/4	34.3	35.6	37.1	38.7	34.9	41.3
B STAB SLK	1/2	1/2	1/2	1/2	1/2	1/2	1.3	1.3	1.3	1.3	1.3	1.3
C STAB SLK	1	1	1	1	1	1	2.5	2.5	2.5	2.5	2.5	2.5
D STAB SLK	1 1/2	1 1/2	1 1/2	1 1/2	1 1/2	1 1/2	3.8	3.8	3.8	3.8	3.8	3.8
*BK-TOG Vectran Dacron	13	13 3/8	14 3/8	15 1/4	18 1/8	17 3/8	33.0	34.0	36.5	38.6	46.1	44.0
*BK-TOG Microline	13 1/2	13 7/8	14 7/8	15 3/4	18 5/8	17 3/4	34.3	35.2	37.7	39.8	47.3	45.2
**Channel Slider	23" Chord 31" Span	23" Chord 31" Span	23" Chord 31" Span	23" Chord 31" Span	23" Chord 31" Span	23" Chord 31" Span	58.4 Chord 78.7 Span	58.4 Chord 78.7 Span	58.4 Chord 78.7 Span	58.4 Chord 78.7 Span	58.4 Chord 78.7 Span	58.4 Chord 78.7 Span

*Due to development methodology, the finished BK-TOG dimensions may not scale. Some SABRE2 canopies are built with longer Bk-tog lines per customer request, typically +3", +6".

**Click here to see "How To Measure a Slider": <https://www.youtube.com/watch?v=vZB0sNdUQcs>