

The foregoing certificate(s) of Todd W. Hutton, Notary of Virginia Beach is (are) certified to be correct. This instrument was presented for registration at 1:50 o'clock P.M. on Aug 25 1976, and recorded in Book F, Page 1174

A. D. LAWSON, JR.  
Register of Deeds

By: Linda H. Ballance  
Register of Deeds Assistant or Deputy

NO.	RADIUS	DELTA	ARC	TANGENT	CHORD
1	755.62'	0°53'01"	103.97'	52.07'	103.89'
2	80.00'	90°00'00"	3.42'	20.00'	28.28'
3	80.00'	9°53'10"	3.47'	22.96'	30.16'
4	100.00'	82°06'59"	143.32'	97.11'	156.56'
5	60.00'	86°06'59"	229.31'	159.37'	210.18'
6	50.00'	36°56'12"	32.18'	18.67'	31.62'
7	50.00'	253°44'28"	221.43'		80.00'
8	75.00'	189°51'32"	233.78'		148.90'

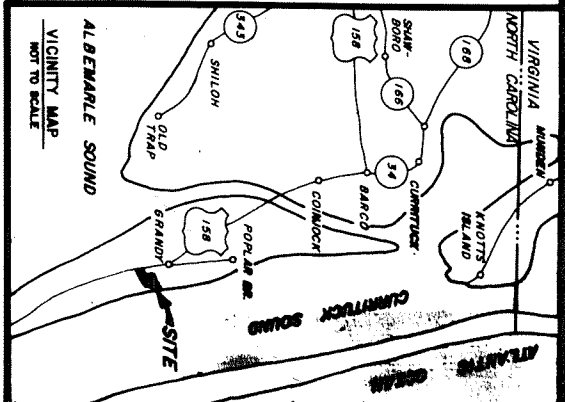
I HEREBY CERTIFY THAT A SECURITY BOND IN THE AMOUNT OF \$           HAS BEEN POSTED WITH THE CURRITUCK COUNTY COMMISSIONERS OR THAT A SATISFACTORY FINANCIAL ARRANGEMENT HAS BEEN MADE TO ASSURE COMPLETION OF ALL REQUIRED IMPROVEMENTS IN CASE OF DEFAULT.

DATE 8-25 1976  
COUNTY CLERK TREASURER  
COUNTY ENGINEER  
COUNTY CLERK

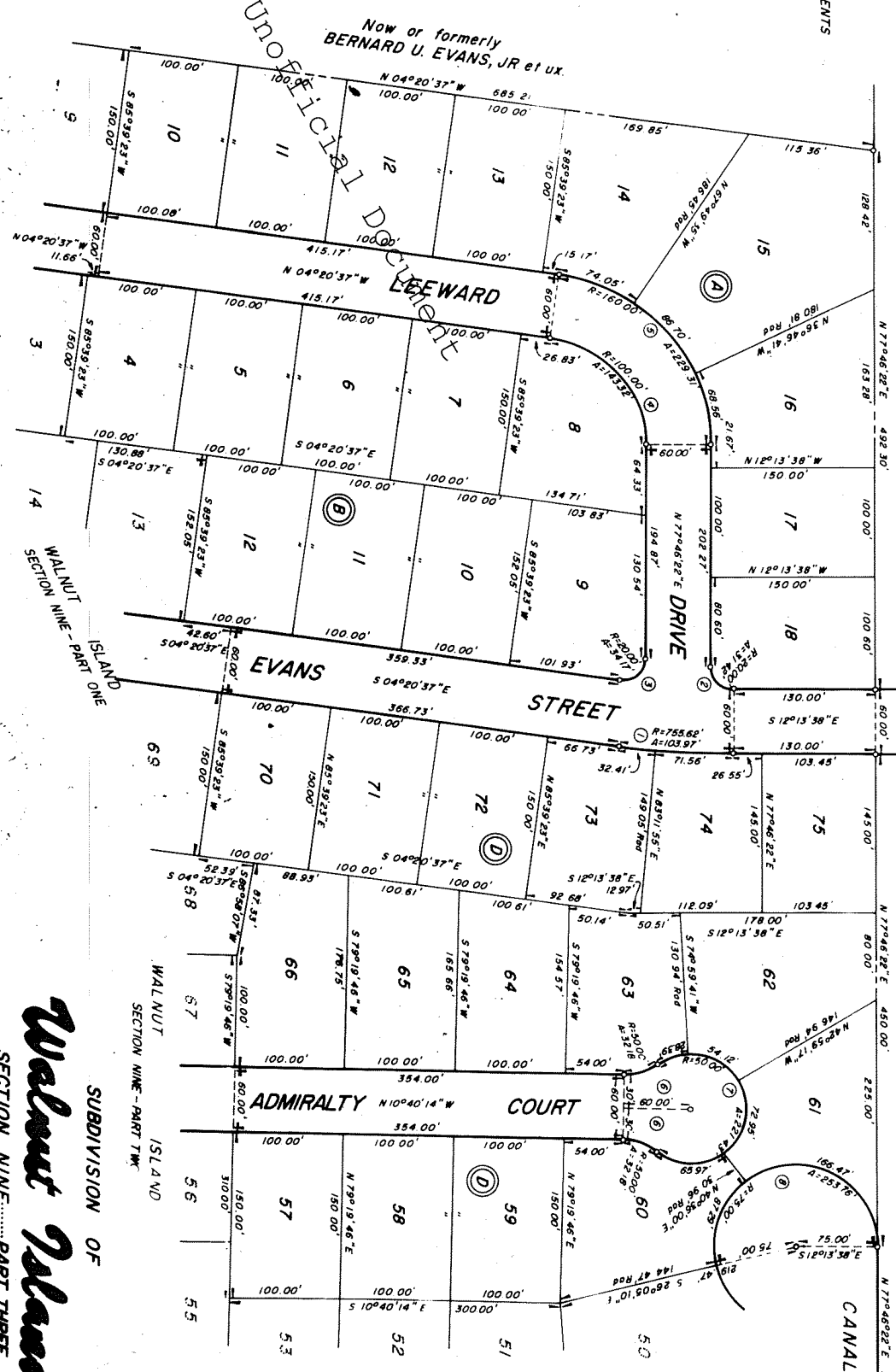
WE HEREBY CERTIFY THAT WE ARE OWNERS OF THE PROPERTY SHOWN AND DESCRIBED HEREON AND THAT WE HEREBY ADOPT THIS PLAN OF SUBDIVISION WITH OUR FREE CONSENT, ESTABLISH THE MINIMUM BUILDING LINES, AND DEDICATE ALL STREETS, ALLEYS, WALKS, PARKS AND OTHER OPEN SPACES TO PUBLIC OR PRIVATE USE AS NOTED. FURTHER, WE CERTIFY THAT THE LAND SHOWN HEREON IS WITHIN THE SUBDIVISION REGULATIONS JURISDICTION OF THE COUNTY COMMISSIONERS OF CURRITUCK COUNTY.

I HEREBY CERTIFY THAT THE PLAT SHOWN AND DESCRIBED HEREON IS A TRUE AND CORRECT SURVEY TO THE ACCURACY REQUIRED OF CURRITUCK COUNTY SUBDIVISIONS AND THAT MONUMENTS HAVE BEEN PLACED AS SHOWN HEREON. THE PLAT SHOWN IS IN ACCORDANCE WITH THE PROVISIONS OF NORTH CAROLINA G.S. 47-30 AS AMENDED.  
DATE April 22 1976  
WALTER FRANCIS SHIRNE L-1427

I HEREBY CERTIFY THAT THE WATER SUPPLY AND SEWAGE DISPOSAL SYSTEM INSTALLED OR PROPOSED FOR INSTALLATION, IN THE SUBDIVISION, ENTITLED "WALNUT ISLAND, SECTION NINE, PART THREE" FULLY MEET THE REQUIREMENTS OF THE NORTH CAROLINA STATE HEALTH DEPARTMENT, AND ARE HEREBY APPROVED AS SHOWN.  
DATE April 21 1976  
COUNTY SANITATION OFFICER OR HIS AUTHORIZED REPRESENTATIVE



- NOTES:
1. A EASEMENT (UNLESS GREATER WIDTH IS NOTED) ALONG AND ADJACENT TO ALL SIDE AND REAR LINES OF ALL LOTS WITHIN THIS SUBDIVISION IS HEREBY RESERVED BY THE DEVELOPER FOR THE INSTALLATION AND/OR MAINTENANCE OF UTILITIES AND DRAINAGE FACILITIES
  2. MINIMUM SETBACK LINE FROM STREETS IS 20 FEET



**Walnut Island**  
SUBDIVISION OF  
SECTION NINE - PART THREE  
CURRITUCK COUNTY - GRANDY, NORTH CAROLINA  
Scale: 1" = 100'  
WILMER FRANCIS SHIRNE  
REGISTERED LAND SURVEYOR  
VIRGINIA BEACH, VIRGINIA  
APRIL 21, 1976

TOTAL AREA ENCOMPASSED BY THIS SUBDIVISION = 15,671 ACRES

Unofficial Document

Unofficial Document

Unofficial Document