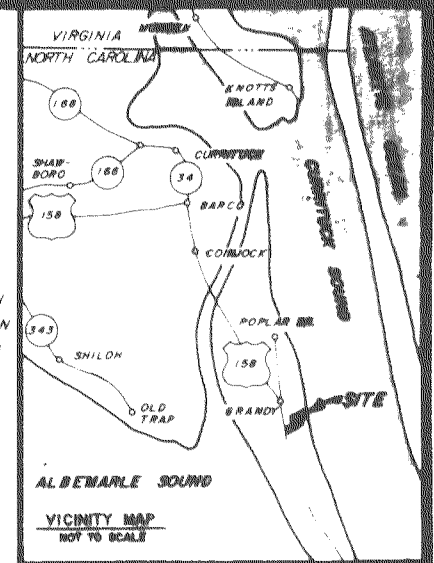


Unofficial Document

WE HEREBY CERTIFY THAT WE ARE OWNERS OF THE PROPERTY SHOWN AND DESCRIBED HEREON AND THAT WE HEREBY ADOPT THIS PLAN OF SUBDIVISION WITH OUR FREE CONSENT, ESTABLISH THE MINIMUM BUILDING LINES, AND DEDICATE ALL STREETS, ALLEYS, WALKS, PARKS AND OTHER OPEN SPACES TO PUBLIC OR PRIVATE USE AS NOTED FURTHER, WE CERTIFY THAT THE LAND SHOWN HEREON IS WITHIN THE SUBDIVISION REGULATIONS JURISDICTION OF THE COUNTY COMMISSIONERS OF CURRITUCK COUNTY

I HEREBY CERTIFY THAT THE PLAT SHOWN AND DESCRIBED HEREON IS A TRUE AND CORRECT SURVEY TO THE ACCURACY REQUIRED OF CURRITUCK COUNTY SUBDIVISIONS AND THAT MONUMENTS HAVE BEEN PLACED AS SHOWN HEREON THE PLAT SHOWN IS IN ACCORDANCE WITH THE PROVISIONS OF NORTH CAROLINA GS 47-30 AS AMENDED

I HEREBY CERTIFY THAT THE WATER SUPPLY AND SEWAGE DISPOSAL SYSTEM INSTALLED, OR PROPOSED FOR INSTALLATION, IN THE SUBDIVISION, ENTITLED "WALNUT ISLAND, SECTION NINE, PART TWO" FULLY MEET THE REQUIREMENTS OF THE NORTH CAROLINA STATE HEALTH DEPARTMENT, AND ARE HEREBY APPROVED AS SHOWN



DATE April 22, 1976 BAUM AND WOODHOUSE ENTERPRISES, INC  
*W.E. Baum, Jr.*  
W.E. BAUM, JR., PRESIDENT  
*Larry Woodhouse*  
LARRY WOODHOUSE, SECRETARY

STATE OF VIRGINIA  
CITY OF VIRGINIA BEACH, TO WIT

DATE \_\_\_\_\_, 1976  
COUNTY SANITATION OFFICER OR HIS AUTHORIZED REPRESENTATIVE

\_\_\_\_\_, THE COUNTY CLERK AND TREASURER CURRITUCK COUNTY, DO CERTIFY THAT CURRITUCK COUNTY APPROVED THIS MAP AND ACCEPTED THE DEDICATION OF THE EASEMENTS, RIGHTS-OF-WAY AND PUBLIC PARK SHOWN THEREON, BUT ASSUME NO RESPONSIBILITY TO OPEN OR MAINTAIN THE SAME UNTIL, IN THE OPINION OF THE GOVERNING BODY OF CURRITUCK COUNTY, IT IS IN THE PUBLIC INTEREST TO DO SO

I, Jerrold W. Hutton A NOTARY PUBLIC OF AFORESAID STATE AND CITY, DO HEREBY CERTIFY THAT WILMER F. SIRINE PERSONALLY APPEARED BEFORE ME THIS DATE AND ACKNOWLEDGED THE CERTIFICATION OF THE ACCURACY OF THIS PLAT

I HEREBY CERTIFY THAT THE SUBDIVISION PLAT SHOWN HEREON HAS BEEN FOUND TO COMPLY WITH THE SUBDIVISION REGULATIONS FOR CURRITUCK COUNTY, WITH THE EXCEPTION OF SUCH VARIANCES, IF ANY, AS ARE NOTED IN THE MINUTES OF THE COUNTY COMMISSIONERS AND THAT IT HAS BEEN APPROVED FOR RECORDING IN THE OFFICE OF THE REGISTER OF DEEDS

GIVEN UNDER MY HAND AND NOTORIAL SEAL THIS 22<sup>nd</sup> DAY OF April, 1976  
MY COMMISSION EXPIRES March 9, 1980

DATE \_\_\_\_\_, 1976  
CHAIRMAN, COUNTY COMMISSIONERS

DATE \_\_\_\_\_, 1976  
COUNTY CLERK TREASURER

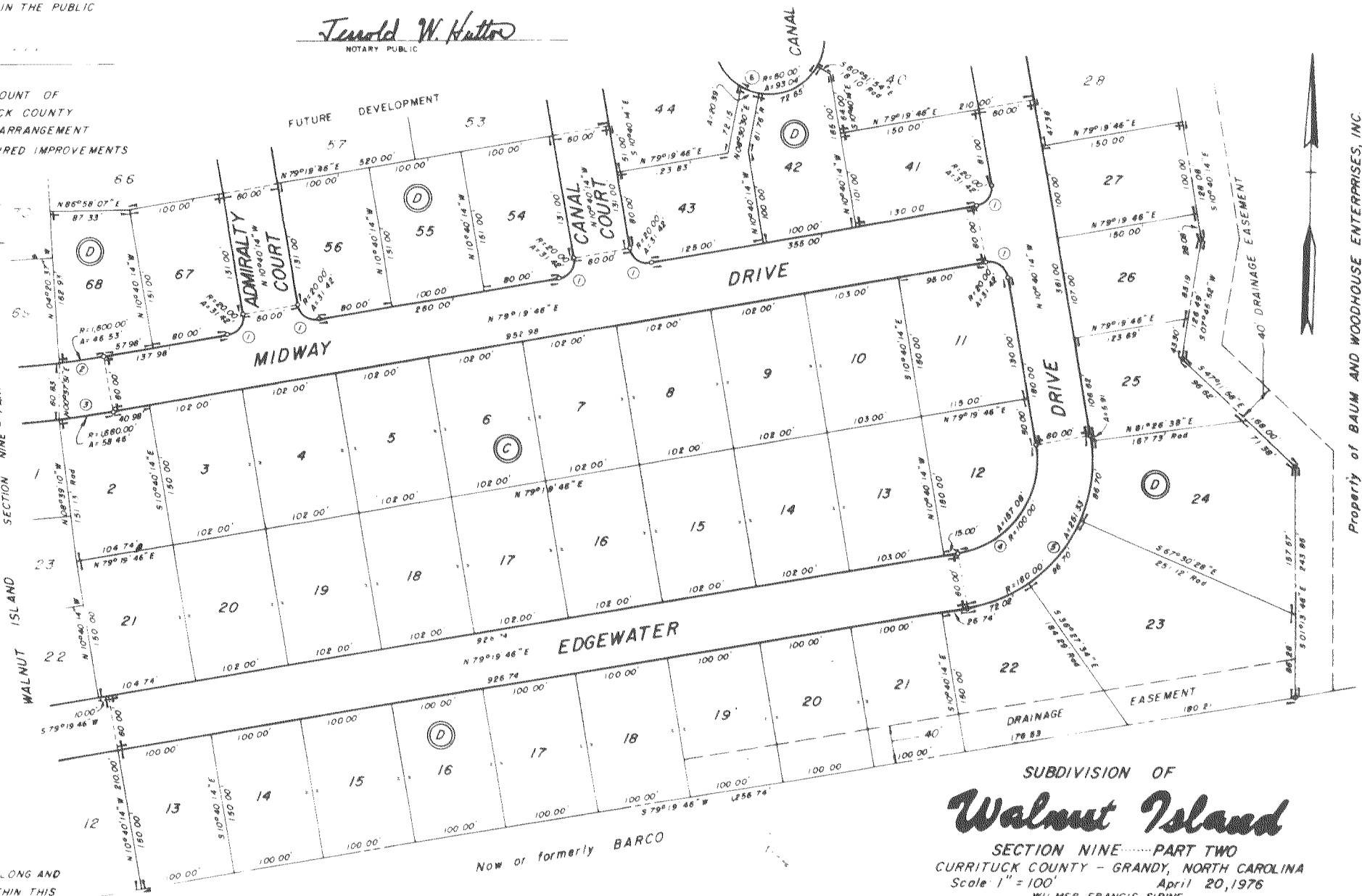
Jerrold W. Hutton  
NOTARY PUBLIC

I HEREBY CERTIFY THAT A SECURITY BOND IN THE AMOUNT OF \$ \_\_\_\_\_ HAS BEEN POSTED WITH THE CURRITUCK COUNTY COMMISSIONERS OR THAT A SATISFACTORY FINANCIAL ARRANGEMENT HAS BEEN MADE TO ASSURE COMPLETION OF ALL REQUIRED IMPROVEMENTS IN CASE OF DEFAULT

COUNTY ENGINEER  
COUNTY CLERK

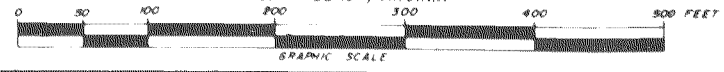
CURVED TABLE

NO	RADIUS	DELTA	ARC	TANGENT	CHORD
1	20.00	90°00'00"	3.14	20.00	28.28
2	800.00	0°39'59"	46.46	23.27	48.53
3	880.00	0°01'04"	58.48	29.23	58.45
4	100.00	90°00'00"	5.71	100.00	141.42
5	180.00	90°00'00"	25.13	180.00	258.27
6	80.00	88°50'40"	93.04	18.80	83.99



NOTES  
1 A 6' EASEMENT (UNLESS GREATER WIDTH IS NOTED) ALONG AND ADJACENT TO ALL SIDE AND REAR LINES OF ALL LOTS WITHIN THIS SUBDIVISION IS HEREBY RESERVED BY THE DEVELOPER FOR THE INSTALLATION AND/OR MAINTENANCE OF UTILITIES AND DRAINAGE FACILITIES  
2 MINIMUM SETBACK LINE FROM STREETS IS 20 FEET

SUBDIVISION OF  
**Walnut Island**  
SECTION NINE - PART TWO  
CURRITUCK COUNTY - GRANDY, NORTH CAROLINA  
Scale 1" = 100'  
April 20, 1976  
WILMER FRANCIS SIRINE  
REGISTERED LAND SURVEYOR  
VIRGINIA BEACH, VIRGINIA



TOTAL AREA ENCOMPASSED BY THIS SUBDIVISION: 19.977 ACRES