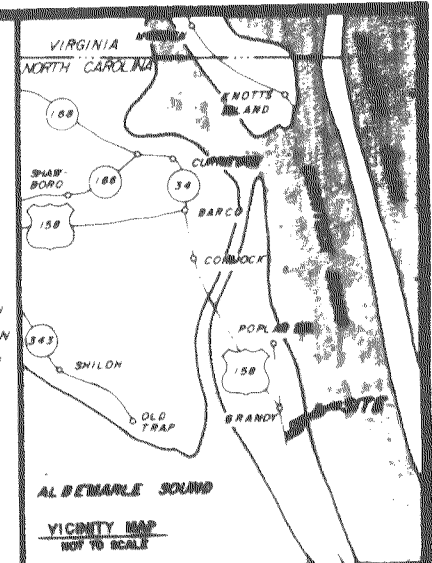


Unofficial Document

WE HEREBY CERTIFY THAT WE ARE OWNERS OF THE PROPERTY SHOWN AND SET FORTH HEREIN AND THAT WE HEREBY ADOPT THIS PLAN...

HEREBY CERTIFY THAT THE PLAT SHOWN AND DESCRIBED HEREON IS A TRUE AND CORRECT SURVEY TO THE ACCURACY REQUIRED OF CURRITUCK COUNTY SUBDIVISIONS...

I HEREBY CERTIFY THAT THE WATER SUPPLY AND SEWAGE DISPOSAL SYSTEM INSTALLED, OR PROPOSED FOR INSTALLATION, IN THE SUBDIVISION, ENTITLED "WALNUT ISLAND, SECTION NINE, PART ONE FULLY MEET THE REQUIREMENTS OF THE NORTH CAROLINA STATE HEALTH DEPARTMENT...



DATE APRIL 22, 1976 BAUM AND WOODHOUSE ENTERPRISES, INC. W.F. BAUM, JR. PRESIDENT LADY WOODHOUSE, SECRETARY

STATE OF VIRGINIA CITY OF VIRGINIA BEACH, TO WIT J. Terrold W. Hutton, A NOTARY PUBLIC OF AFORESAID STATE AND CITY, DO HEREBY CERTIFY THAT WILMER F. SIRINE PERSONALLY APPEARED BEFORE ME THIS DATE AND ACKNOWLEDGED THE CERTIFICATION OF THE ACCURACY OF THIS PLAT

DATE APRIL 22, 1976 COUNTY SANITATION OFFICER OR HIS AUTHORIZED REPRESENTATIVE

I HEREBY CERTIFY THAT THE SUBDIVISION PLAT SHOWN HEREON HAS BEEN FOUND TO COMPLY WITH THE SUBDIVISION REGULATIONS FOR CURRITUCK COUNTY, WITH THE EXCEPTION OF SUCH VARIANCES, IF ANY, AS ARE NOTED IN THE MINUTES OF THE COUNTY COMMISSIONERS AND THAT IT HAS BEEN APPROVED FOR RECORDING IN THE OFFICE OF THE REGISTER OF DEEDS

GIVEN UNDER MY HAND AND NOTORIAL SEAL THIS 22nd DAY OF April, 1976 MY COMMISSION EXPIRES March 9, 1980

DATE APRIL 22, 1976 CHAIRMAN, COUNTY COMMISSIONERS

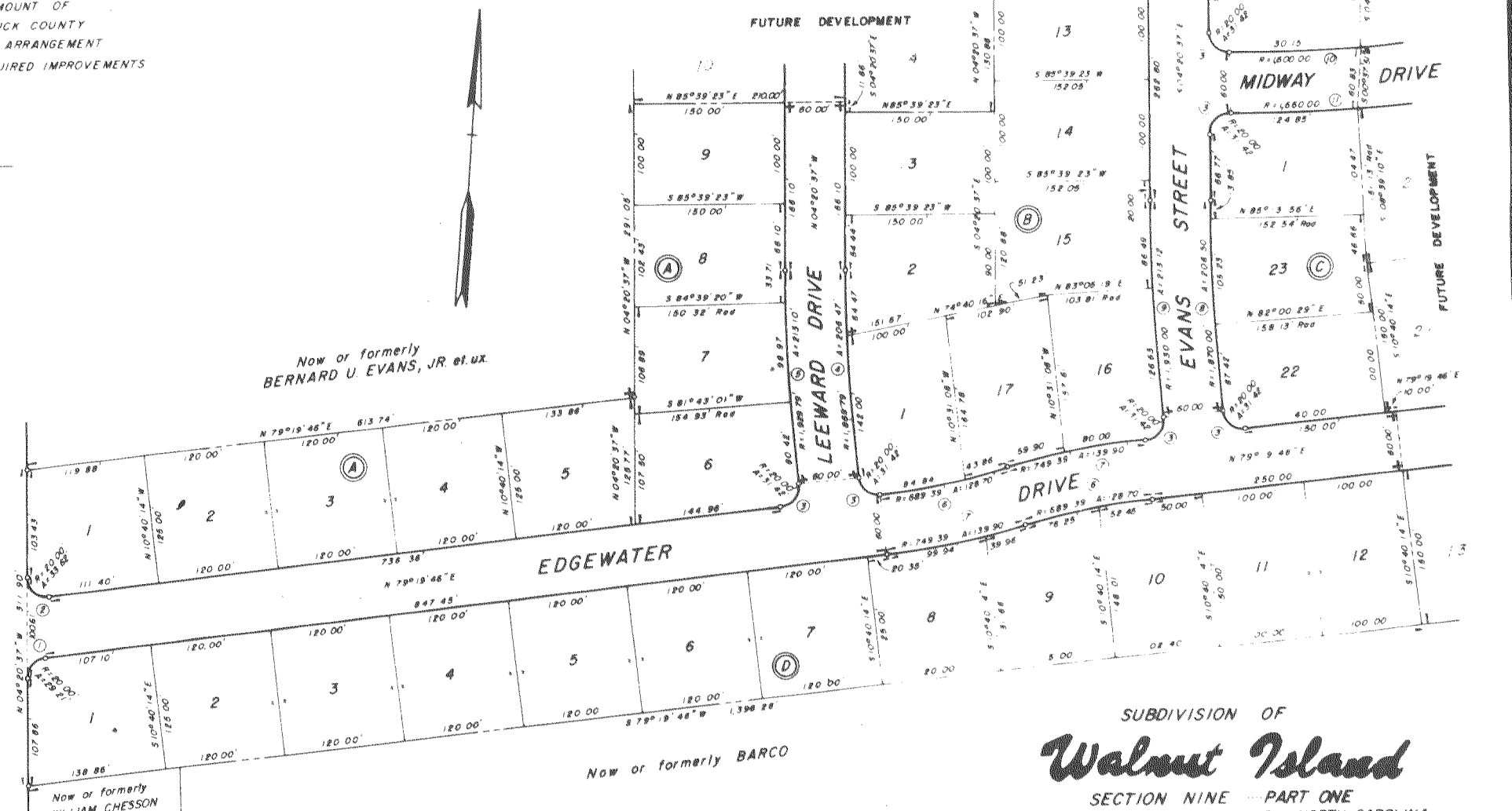
THE COUNTY CLERK AND TREASURER CURRITUCK COUNTY, DO CERTIFY THAT CURRITUCK COUNTY APPROVED THIS PLAT OR MAP AND ACCEPTED THE DEDICATION OF THE EASEMENTS, RIGHTS-OF-WAY AND PUBLIC PARK SHOWN THEREON, BUT ASSUME NO RESPONSIBILITY TO OPEN OR MAINTAIN THE SAME UNTIL, IN THE OPINION OF THE GOVERNING BODY OF CURRITUCK COUNTY, IT IS IN THE PUBLIC INTEREST TO DO SO

DATE APRIL 22, 1976 COUNTY CLERK TREASURER

I HEREBY CERTIFY THAT A SECURITY BOND IN THE AMOUNT OF \$ HAS BEEN POSTED WITH THE CURRITUCK COUNTY COMMISSIONERS OR THAT A SATISFACTORY FINANCIAL ARRANGEMENT HAS BEEN MADE TO ASSURE COMPLETION OF ALL REQUIRED IMPROVEMENTS IN CASE OF DEFAULT

COUNTY ENGINEER COUNTY CLERK

Table with columns: NO, RADIUS, DELTA, TANGENT, CHORD. Contains 10 rows of survey data.



NOTES 1 A 6' EASEMENT (UNLESS GREATER WIDTH IS NOTED) ALONG AND ADJACENT TO ALL SIDE AND REAR LINES OF ALL LOTS WITHIN THIS SUBDIVISION IS HEREBY RESERVED BY THE DEVELOPER FOR THE INSTALLATION AND/OR MAINTENANCE OF UTILITIES AND DRAINAGE FACILITIES 2 MINIMUM SETBACK LINE FROM STREETS IS 20 FEET

TOTAL AREA ENCOMPASSED BY THIS SUBDIVISION = 15.117 ACRES

SUBDIVISION OF Walnut Island SECTION NINE - PART ONE CURRITUCK COUNTY - GRANDY, NORTH CAROLINA Scale 1" = 100' April 19, 1976 WILMER FRANCIS SIRINE REGISTERED LAND SURVEYOR VIRGINIA BEACH, VIRGINIA



Unofficial Document

Unofficial Document