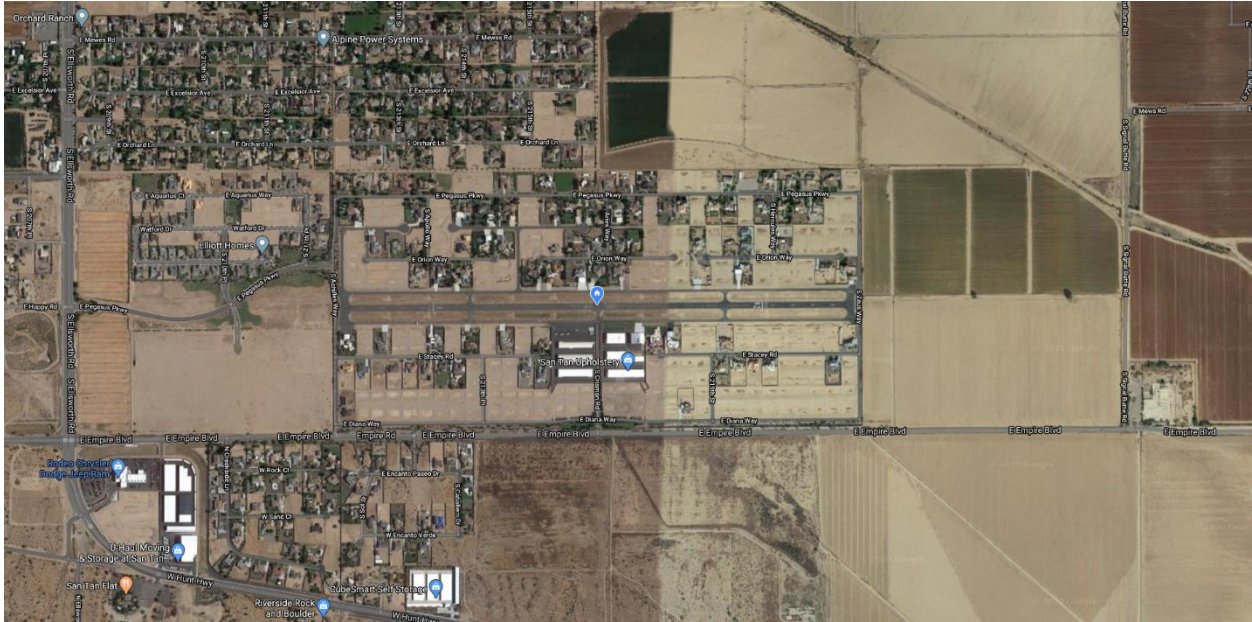


Pegasus Airpark Flying Friendly



NOISE ABATEMENT PROCEDURES

In order to be a good neighbor, the Airpark and the Community requests that you follow the recommended noise-abatement procedures. Flight safety must supercede noise-mitigation procedures. All FARs apply. [Click here](#) for the latest information from the FAA.

Please avoid the following activities for noise abatement:

- Touch-and-Goes are not allowed.
- Avoid repetitive take offs and landings during Sunday mornings, until noon.
- Please avoid full-power climb-outs at steep climb rates.
- No Flight training operations at the airport

Please be vigilant for other aircraft. Give plenty of time to orient yourself outside the pattern. Standard Traffic Pattern in use. Faster aircraft will need to extend pattern.

***See and be seen. Hear and be heard.
Announce your position. Use your radio.***

RUNWAY 8

ARRIVALS

- Left-Hand Traffic (Calm-wind runway)
- Be at traffic pattern altitude (TPA), or above, Start 45 degree pattern entry at center field.

DEPARTURES

- Climb at best angle of climb (Vx) to 500 ft AGL on runway heading. Reduce power by 200 RPM or 2" MP if practical and continue on runway heading until 1000' AGL.

RUNWAY 26

ARRIVALS

- Left-Hand Traffic
- Be at traffic pattern altitude (TPA), or above, Start 45 degree pattern entry at center field.

DEPARTURES

- Climb at best angle of climb (Vx) to 500 ft AGL on runway heading. Reduce power by 200 RPM or 2" MP if practical and continue on runway heading until 1000' AGL. Depart to the Southwest when possible to avoid residential areas.

AIRSPACE WARNINGS

- Pegasus Airpark is inside the Phoenix Class B airspace. Be aware of airspace limitations.

NON-TOWERED AIRPORT REMINDERS

- Closest alternate is KIWA Mesa Gateway Airport, 6 miles north.
- Pegasus Airpark located in just north of the Santan Mountains, gusty conditions and downdrafts are possible with strong wind out of the south.
- Class-D airspace directly adjacent to the north, northeast and northwest.
 - No flight training operations at the airport
 - No early turnouts over houses when departing