

# ENVIROSERVER - ES SERIES ES6

**DESCRIPTION:**

PRIMARY AND SECONDARY WASTEWATER TREATMENT DEVICE USING BOTH FIXED FILM AND SUSPENDED GROWTH WITH MULTI-STAGE AEROBIC PROCESS. TANK CAPACITIES LISTED ARE FOR STANDARD UNITS



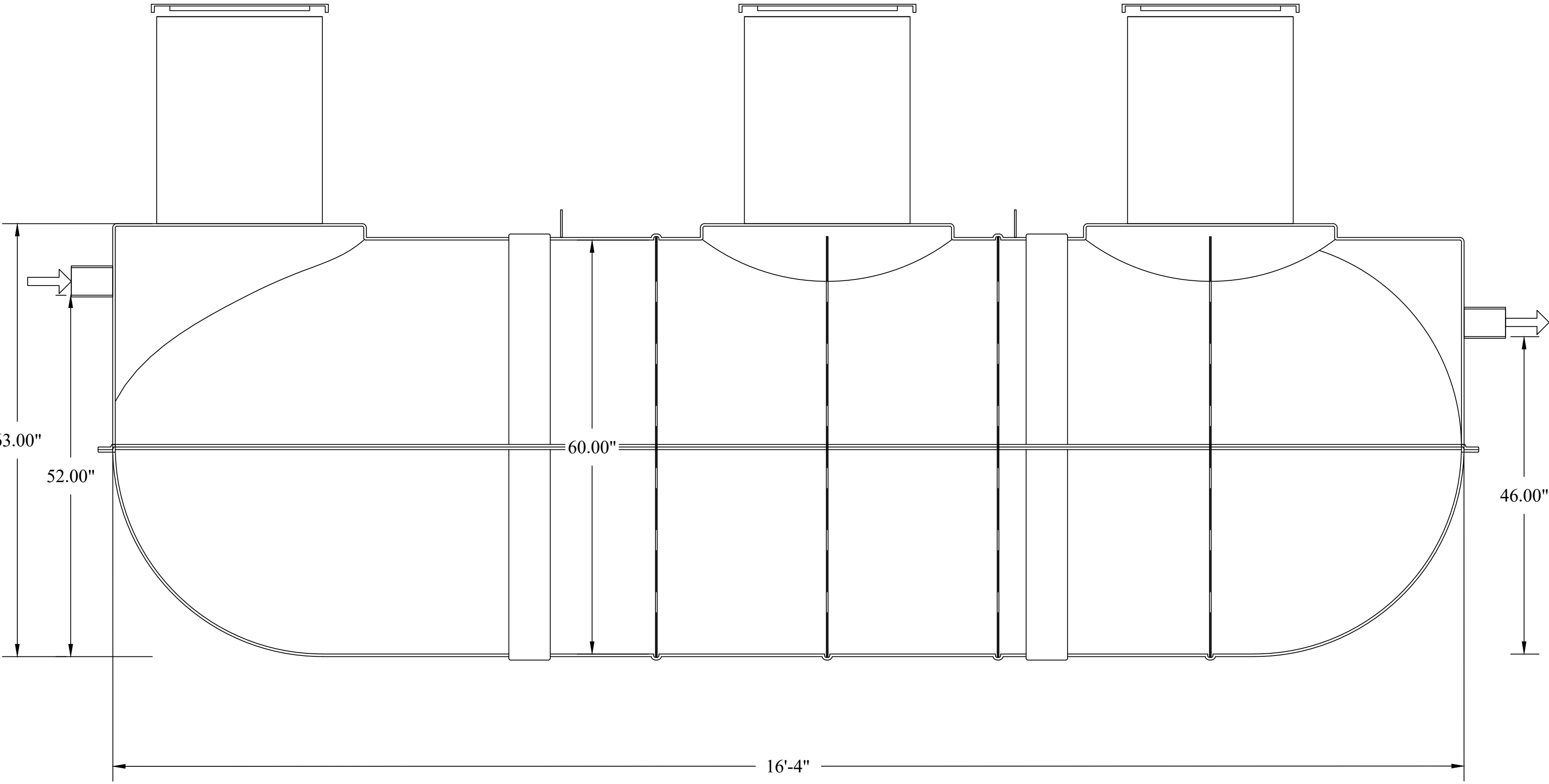
31 AFFONSO DRIVE  
 MOUND HOUSE, NV 89706  
 1(877)-4SEPTIC [1(877)473-7842]  
 WWW.MICROSEPTEC.COM

**NOTES**

- GENERAL:**
1. THE MIDDLE THREE CHAMBERS SHOULD NEVER BE PUMPED DRY, ESPECIALLY IN HIGH GROUNDWATER CONDITIONS
  2. RISERS AND RISER ADAPTERS NOT SUPPLIED BY MICROSEPTEC
  3. PLUMBING DIMENSIONS FROM OUTSIDE EDGE OF TANK TO INVERT OF INLET AND OUTLET
  4. CONTRACTOR TO PROVIDE ADDITIONAL PLUMBING FOR ANY BURIAL DEPTH GREATER THAN 4FT
  5. SITE-SPECIFIC CHARACTERISTICS INCLUDING BUT NOT LIMITED TO: BURIAL DEPTH, TRAFFIC OR OTHER EXTERNAL LOADING, SEASONAL GROUNDWATER, AND SOIL CHARACTERISTICS SHOULD BE CONFIRMED WITH A LOCAL DESIGN ENGINEER BEFORE INSTALLATION

- TANK BURIAL:**
6. THE DESIGNED TANK BURIAL DEPTH IS 2FT TO 6FT. ANY TANK BURIED BEYOND THAT RANGE MUST BE ANALYZED BY A LOCAL DESIGN ENGINEER
  7. COVER TO BE A MINIMUM OF 2FT.
  8. ENGINEERED BACKFILL TO BE A MINIMUM OF 12" ALONG SIDES AND BOTTOM OF TANK
  9. GEOLOGIST OR GEOTECHNICAL ENGINEER TO DETERMINE IF ANCHORS AND TEXTILE FILTER ARE REQUIRED.
  10. DEPTH OF SOIL SLOPE CUT PER LOCAL CODE OR SOIL REPORT
  11. VERTICAL CUT FOR FILL HEIGHT CAN BE DONE IF APPROVED BY LOCAL CODE OR SOIL ENGINEER
  12. GEOLOGIST OR GEOTECH ENGINEER SHOULD DETERMINE IF CORROSIVE RESISTANT MATERIAL SHOULD BE USED IN ANY STEEL PARTS EXPOSED IN THE SOIL

DESIGN TREATMENT CAPACITY (gpd)	600
TOTAL TANK CAPACITY (gal)	2000
TOTAL LENGTH	16'-4"
DIAMETER (in.)	60
INLET HEIGHT (in.)	52
OUTLET HEIGHT (in.)	46



<b>DRAWN:</b>	<b>DATE:</b>	<b>JOB NUMBER:</b>
AJM	2/10/21	ES6

**REVISION:**

REVISION:	DATE: BY:	DESCRIPTION:

**SITE INFORMATION:**

ES 6  
 ENVIROSERVER  
 ADVANCED WASEWATER  
 TREATMENT SYSTEM

**SHEET TITLE:**

ES6

**SHEET NUMBER:**

1 OF 1

# ENVIROSERVER - ES SERIES ES6-GRAV/SOL-MST



31 AFFONSO DRIVE  
MOUND HOUSE, NV 89706  
1(877)-4SEPTIC [1(877)473-7842]  
WWW.MICROSEPTEC.COM

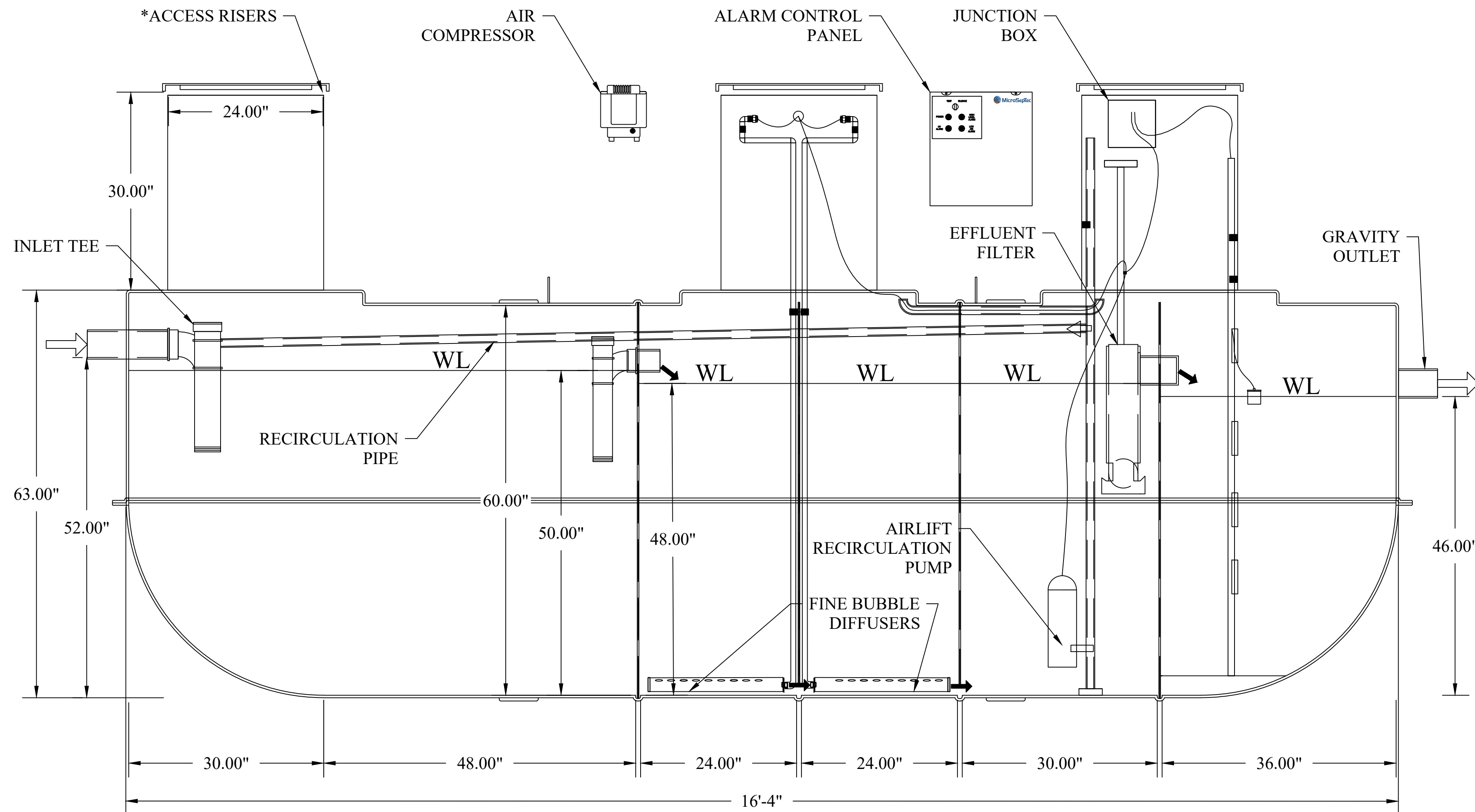
## DESCRIPTION:

PRIMARY AND SECONDARY WASTEWATER TREATMENT DEVICE USING BOTH FIXED FILM AND SUSPENDED GROWTH WITH MULTI-STAGE AEROBIC PROCESS. TANK CAPACITIES LISTED ARE FOR STANDARD UNITS

## NOTES

- GENERAL:
- THE MIDDLE THREE CHAMBERS SHOULD NEVER BE PUMPED DRY, ESPECIALLY IN HIGH GROUNDWATER CONDITIONS
  - RISERS AND RISER ADAPTERS NOT SUPPLIED BY MICROSEPTEC
  - PLUMBING DIMENSIONS FROM OUTSIDE EDGE OF TANK TO INVERT OF INLET AND OUTLET
  - CONTRACTOR TO PROVIDE ADDITIONAL PLUMBING FOR ANY BURIAL DEPTH GREATER THAN 4FT
  - SITE-SPECIFIC CHARACTERISTICS INCLUDING BUT NOT LIMITED TO: BURIAL DEPTH, TRAFFIC OR OTHER EXTERNAL LOADING, SEASONAL GROUNDWATER, AND SOIL CHARACTERISTICS SHOULD BE CONFIRMED WITH A LOCAL DESIGN ENGINEER BEFORE INSTALLATION

- TANK BURIAL:
- THE DESIGNED TANK BURIAL DEPTH IS 2FT TO 6FT. ANY TANK BURIED BEYOND THAT RANGE MUST BE ANALYZED BY A LOCAL DESIGN ENGINEER
  - COVER TO BE A MINIMUM OF 2FT
  - ENGINEERED BACKFILL TO BE A MINIMUM OF 12" ALONG SIDES AND BOTTOM OF TANK
  - GEOLOGIST OR GEOTECHNICAL ENGINEER TO DETERMINE IF ANCHORS AND TEXTILE FILTER ARE REQUIRED.
  - DEPTH OF SOIL SLOPE CUT PER LOCAL CODE OR SOIL REPORT
  - VERTICAL CUT FOR FILL HEIGHT CAN BE DONE IF APPROVED BY LOCAL CODE OR SOIL ENGINEER
  - GEOLOGIST OR GEOTECH ENGINEER SHOULD DETERMINE IF CORROSIVE RESISTANT MATERIAL SHOULD BE USED IN ANY STEEL PARTS EXPOSED IN THE SOIL



DESIGN TREATMENT CAPACITY (gpd)	600
TOTAL TANK CAPACITY (gal)	2000
TOTAL LENGTH	16'-4"
DIAMETER (in.)	60
INLET HEIGHT (in.)	52
OUTLET HEIGHT (in.)	46
BIOMEDIA VOLUME (cu.ft.)	20
AIR DIFFUSER	2-EDI FINE BUBBLE
AIR COMPRESSOR	HIBLOW 120LL
RECIRCULATION CONTROL	SOLENOID
ALARM CONTROL PANEL	MCPR-G
TELEMETRY	OPTIONAL

DRAWN:	DATE:	JOB NUMBER:
AJM	2/10/21	ES6

REVISION:		
REVISION:	DATE:	DESCRIPTION:
BY:		

## SITE INFORMATION:

ES 6  
ENVIROSERVER  
ADVANCED WASTEWATER  
TREATMENT SYSTEM

## SHEET TITLE:

ES6-GRAV/SOL-MST

## SHEET NUMBER:

1 OF 1

## ES6 CHAMBER VOLUMES

PRIMARY SETTLING	AERATION 1	AERATION 2	CLARIFIER	PUMP CHAMBER
750	252	252	315	268

## NOTES:

\*MATERIALS NOT SUPPLIED BY MICROSEPTEC

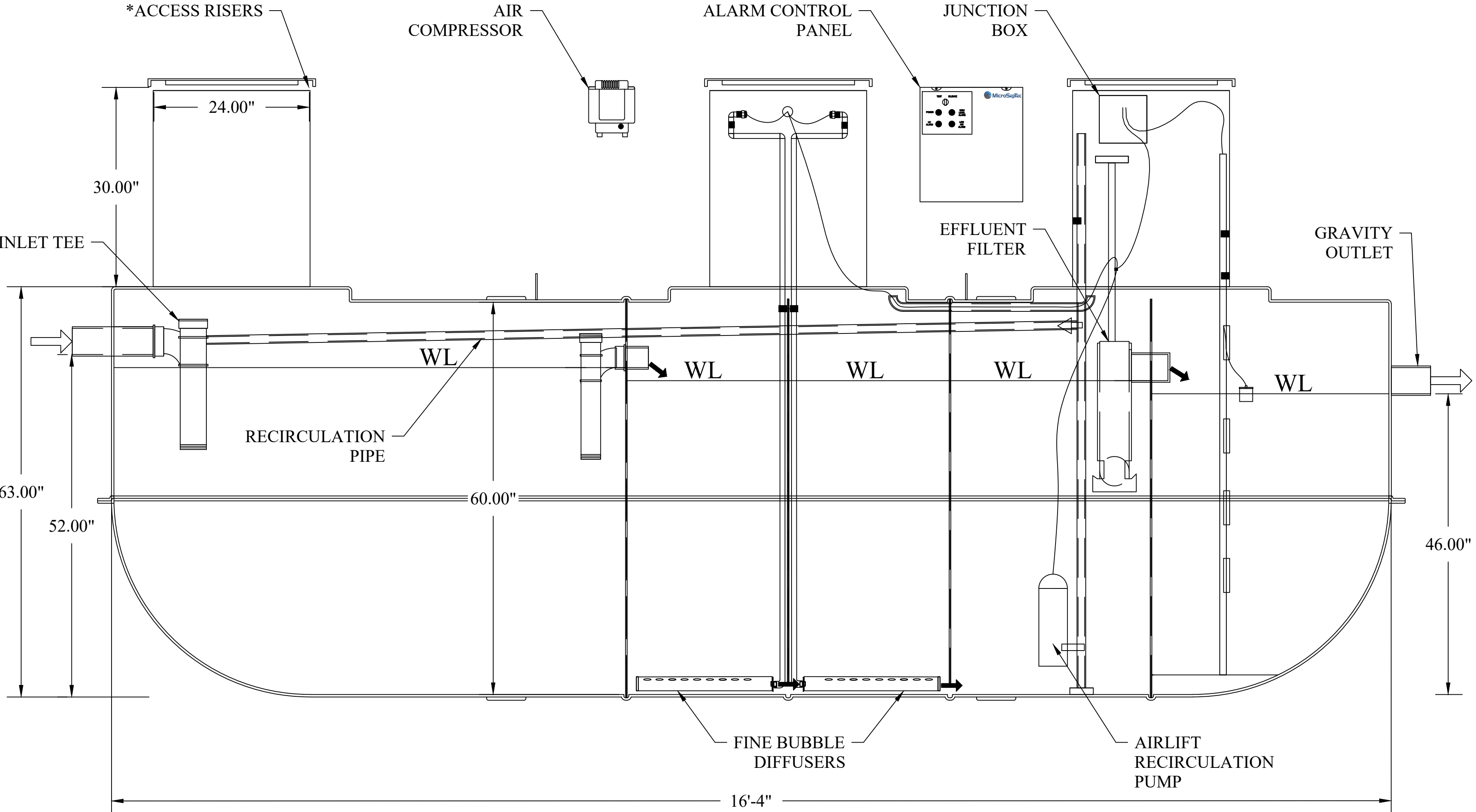
# ENVIROSERVER - ES SERIES ES6-GRAV/SOL



31 AFFONSO DRIVE  
 MOUND HOUSE, NV 89706  
 1(877)-4SEPTIC [1(877)473-7842]  
 WWW.MICROSEPTEC.COM

**DESCRIPTION:**

PRIMARY AND SECONDARY WASTEWATER TREATMENT DEVICE USING BOTH FIXED FILM AND SUSPENDED GROWTH WITH MULTI-STAGE AEROBIC PROCESS. TANK CAPACITIES LISTED ARE FOR STANDARD UNITS



DESIGN TREATMENT CAPACITY (gpd)	600
TOTAL TANK CAPACITY (gal)	2000
TOTAL LENGTH	16'-4"
DIAMETER (in.)	60
INLET HEIGHT (in.)	52
OUTLET HEIGHT (in.)	46
BIOMEDIA VOLUME (cu.ft.)	20
AIR DIFFUSER	2-EDI FINE BUBBLE
AIR COMPRESSOR	HIBLOW 120LL
RECIRCULATION CONTROL	SOLENOID
ALARM CONTROL PANEL	MCPR-G
TELEMETRY	OPTIONAL

**NOTES**

- GENERAL:
- THE MIDDLE THREE CHAMBERS SHOULD NEVER BE PUMPED DRY, ESPECIALLY IN HIGH GROUNDWATER CONDITIONS
  - RISERS AND RISER ADAPTERS NOT SUPPLIED BY MICROSEPTEC
  - PLUMBING DIMENSIONS FROM OUTSIDE EDGE OF TANK TO INVERT OF INLET AND OUTLET
  - CONTRACTOR TO PROVIDE ADDITIONAL PLUMBING FOR ANY BURIAL DEPTH GREATER THAN 4FT
  - SITE-SPECIFIC CHARACTERISTICS INCLUDING BUT NOT LIMITED TO: BURIAL DEPTH, TRAFFIC OR OTHER EXTERNAL LOADING, SEASONAL GROUNDWATER, AND SOIL CHARACTERISTICS SHOULD BE CONFIRMED WITH A LOCAL DESIGN ENGINEER BEFORE INSTALLATION

- TANK BURIAL:
- THE DESIGNED TANK BURIAL DEPTH IS 2FT TO 6FT. ANY TANK BURIED BEYOND THAT RANGE MUST BE ANALYZED BY A LOCAL DESIGN ENGINEER
  - COVER TO BE A MINIMUM OF 2FT
  - ENGINEERED BACKFILL TO BE A MINIMUM OF 12" ALONG SIDES AND BOTTOM OF TANK
  - GEOLOGIST OR GEOTECHNICAL ENGINEER TO DETERMINE IF ANCHORS AND TEXTILE FILTER ARE REQUIRED.
  - DEPTH OF SOIL SLOPE CUT PER LOCAL CODE OR SOIL REPORT
  - VERTICAL CUT FOR FILL HEIGHT CAN BE DONE IF APPROVED BY LOCAL CODE OR SOIL ENGINEER
  - GEOLOGIST OR GEOTECH ENGINEER SHOULD DETERMINE IF CORROSIVE RESISTANT MATERIAL SHOULD BE USED IN ANY STEEL PARTS EXPOSED IN THE SOIL

DRAWN:	DATE:	JOB NUMBER:
AJM	2/10/21	ES6

REVISION:		
REVISION:	DATE:	DESCRIPTION:
	BY:	

**SITE INFORMATION:**

ES 6  
 ENVIROSERVER  
 ADVANCED WASTEWATER  
 TREATMENT SYSTEM

**SHEET TITLE:**

ES6-GRAV/SOL

**SHEET NUMBER:**

1 OF 1

**NOTES:**

\*MATERIALS NOT SUPPLIED BY MICROSEPTEC

# ENVIROSERVER - ES SERIES ES6-GRAV/SOL/UV



31 AFFONSO DRIVE  
 MOUND HOUSE, NV 89706  
 1(877)-4SEPTIC [1(877)473-7842]  
 WWW.MICROSEPTEC.COM

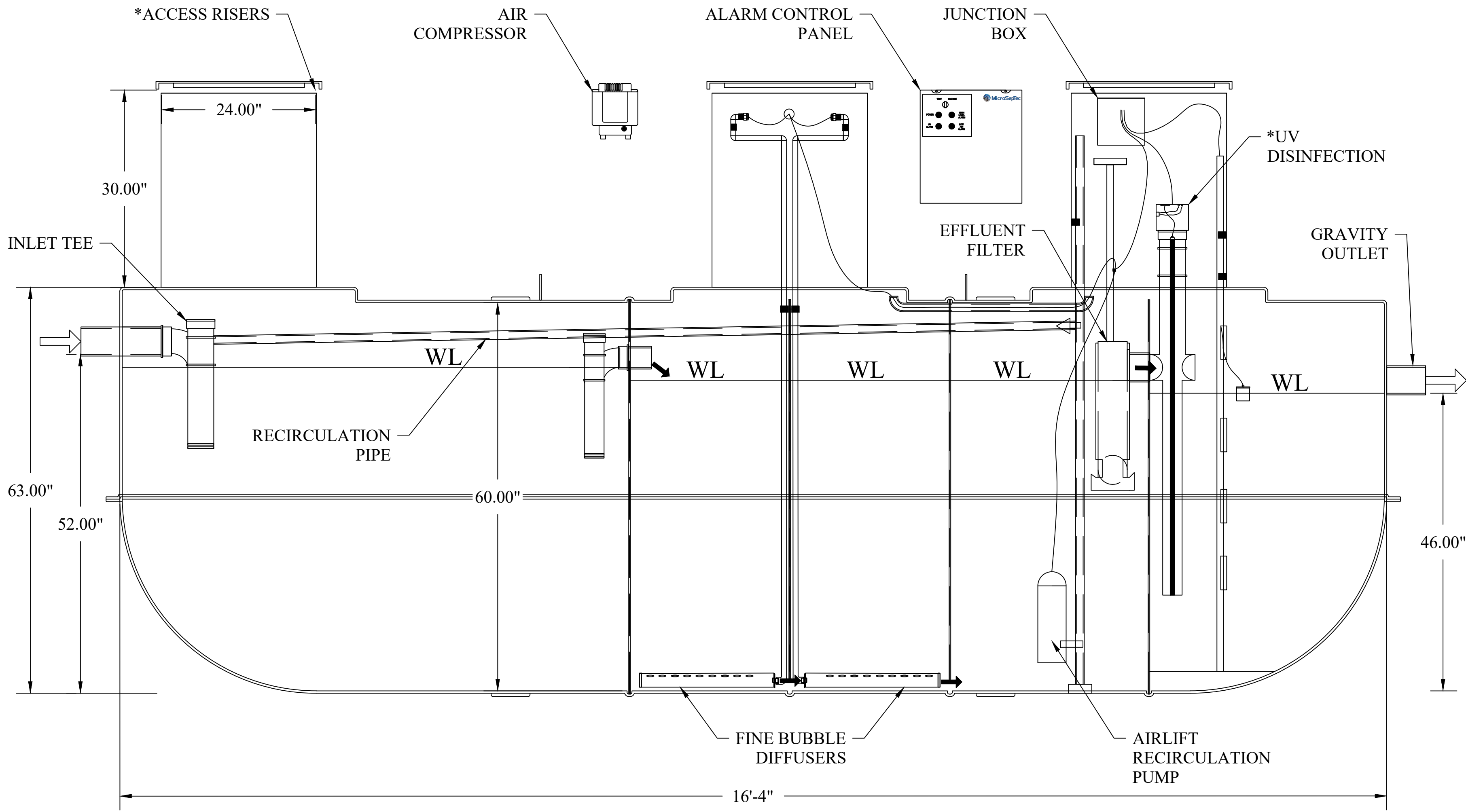
**DESCRIPTION:**

PRIMARY AND SECONDARY WASTEWATER TREATMENT DEVICE USING BOTH FIXED FILM AND SUSPENDED GROWTH WITH MULTI-STAGE AEROBIC PROCESS. TANK CAPACITIES LISTED ARE FOR STANDARD UNITS

**NOTES**

- GENERAL:
1. THE MIDDLE THREE CHAMBERS SHOULD NEVER BE PUMPED DRY, ESPECIALLY IN HIGH GROUNDWATER CONDITIONS
  2. RISERS AND RISER ADAPTERS NOT SUPPLIED BY MICROSEPTEC
  3. PLUMBING DIMENSIONS FROM OUTSIDE EDGE OF TANK TO INVERT OF INLET AND OUTLET
  4. CONTRACTOR TO PROVIDE ADDITIONAL PLUMBING FOR ANY BURIAL DEPTH GREATER THAN 4FT
  5. SITE-SPECIFIC CHARACTERISTICS INCLUDING BUT NOT LIMITED TO: BURIAL DEPTH, TRAFFIC OR OTHER EXTERNAL LOADING, SEASONAL GROUNDWATER, AND SOIL CHARACTERISTICS SHOULD BE CONFIRMED WITH A LOCAL DESIGN ENGINEER BEFORE INSTALLATION

- TANK BURIAL:
6. THE DESIGNED TANK BURIAL DEPTH IS 2FT TO 6FT. ANY TANK BURIED BEYOND THAT RANGE MUST BE ANALYZED BY A LOCAL DESIGN ENGINEER
  7. COVER TO BE A MINIMUM OF 2FT.
  8. ENGINEERED BACKFILL TO BE A MINIMUM OF 12" ALONG SIDES AND BOTTOM OF TANK
  9. GEOLOGIST OR GEOTECHNICAL ENGINEER TO DETERMINE IF ANCHORS AND TEXTILE FILTER ARE REQUIRED.
  10. DEPTH OF SOIL SLOPE CUT PER LOCAL CODE OR SOIL REPORT
  11. VERTICAL CUT FOR FILL HEIGHT CAN BE DONE IF APPROVED BY LOCAL CODE OR SOIL ENGINEER
  12. GEOLOGIST OR GEOTECH ENGINEER SHOULD DETERMINE IF CORROSIVE RESISTANT MATERIAL SHOULD BE USED IN ANY STEEL PARTS EXPOSED IN THE SOIL



DESIGN TREATMENT CAPACITY (gpd)	600
TOTAL TANK CAPACITY (gal)	2000
TOTAL LENGTH	16'-4"
DIAMETER (in.)	60
INLET HEIGHT (in.)	52
OUTLET HEIGHT (in.)	46
BIOMEDIA VOLUME (cu.ft.)	20
AIR DIFFUSER	2-EDI FINE BUBBLE
AIR COMPRESSOR	HIBLOW 120LL
RECIRCULATION CONTROL	SOLENOID
ALARM CONTROL PANEL	MCPR-G
TELEMETRY	OPTIONAL
DISINFECTION	SALCOR 3G

DRAWN:	DATE:	JOB NUMBER:
AJM	2/10/21	ES6

REVISION:		
REVISION:	DATE: BY:	DESCRIPTION:

**SITE INFORMATION:**

ES 6  
 ENVIROSERVER  
 ADVANCED WASTEWATER  
 TREATMENT SYSTEM

**SHEET TITLE:**

ES6-GRAV/SOL/UV

**SHEET NUMBER:**

1 OF 1

**NOTES:**

\*MATERIALS NOT SUPPLIED BY MICROSEPTEC

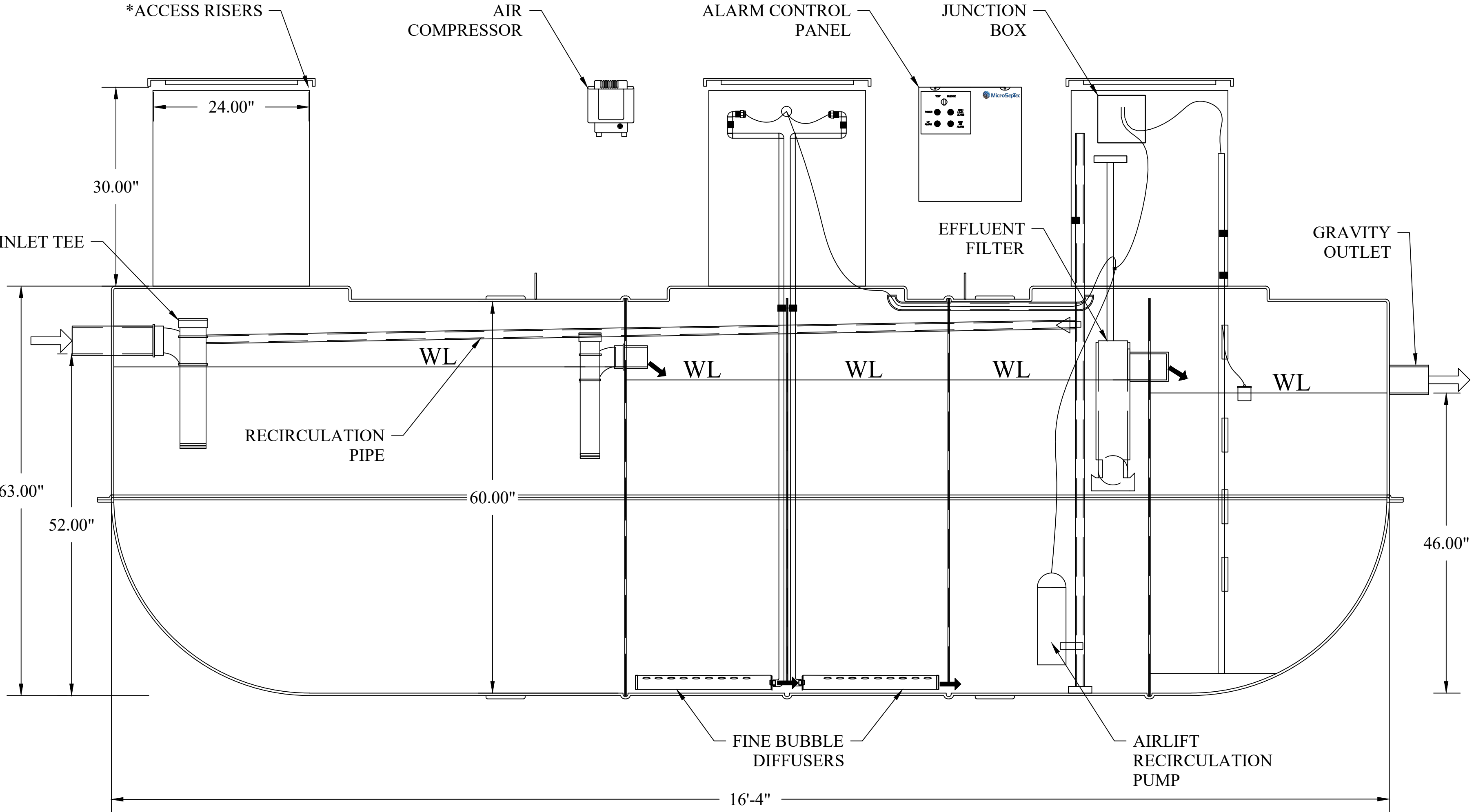
# ENVIROSERVER - ES SERIES ES6-GRAV/NV



31 AFFONSO DRIVE  
 MOUND HOUSE, NV 89706  
 1(877)-4SEPTIC [1(877)473-7842]  
 WWW.MICROSEPTEC.COM

**DESCRIPTION:**

PRIMARY AND SECONDARY WASTEWATER TREATMENT DEVICE USING BOTH FIXED FILM AND SUSPENDED GROWTH WITH MULTI-STAGE AEROBIC PROCESS. TANK CAPACITIES LISTED ARE FOR STANDARD UNITS



DESIGN TREATMENT CAPACITY (gpd)	600
TOTAL TANK CAPACITY (gal)	2000
TOTAL LENGTH	16'-4"
DIAMETER (in.)	60
INLET HEIGHT (in.)	52
OUTLET HEIGHT (in.)	46
BIOMEDIA VOLUME (cu.ft.)	20
AIR DIFFUSER	2-EDI FINE BUBBLE
AIR COMPRESSOR	HIBLOW 120LL
RECIRCULATION CONTROL	NEEDLE VALVE
ALARM CONTROL PANEL	MCP-G
TELEMETRY	OPTIONAL

**NOTES**

- GENERAL:
- THE MIDDLE THREE CHAMBERS SHOULD NEVER BE PUMPED DRY, ESPECIALLY IN HIGH GROUNDWATER CONDITIONS
  - RISERS AND RISER ADAPTERS NOT SUPPLIED BY MICROSEPTEC
  - PLUMBING DIMENSIONS FROM OUTSIDE EDGE OF TANK TO INVERT OF INLET AND OUTLET
  - CONTRACTOR TO PROVIDE ADDITIONAL PLUMBING FOR ANY BURIAL DEPTH GREATER THAN 4FT
  - SITE-SPECIFIC CHARACTERISTICS INCLUDING BUT NOT LIMITED TO: BURIAL DEPTH, TRAFFIC OR OTHER EXTERNAL LOADING, SEASONAL GROUNDWATER, AND SOIL CHARACTERISTICS SHOULD BE CONFIRMED WITH A LOCAL DESIGN ENGINEER BEFORE INSTALLATION

- TANK BURIAL:
- THE DESIGNED TANK BURIAL DEPTH IS 2FT TO 6FT. ANY TANK BURIED BEYOND THAT RANGE MUST BE ANALYZED BY A LOCAL DESIGN ENGINEER
  - COVER TO BE A MINIMUM OF 2FT
  - ENGINEERED BACKFILL TO BE A MINIMUM OF 12" ALONG SIDES AND BOTTOM OF TANK
  - GEOLOGIST OR GEOTECHNICAL ENGINEER TO DETERMINE IF ANCHORS AND TEXTILE FILTER ARE REQUIRED.
  - DEPTH OF SOIL SLOPE CUT PER LOCAL CODE OR SOIL REPORT
  - VERTICAL CUT FOR FILL HEIGHT CAN BE DONE IF APPROVED BY LOCAL CODE OR SOIL ENGINEER
  - GEOLOGIST OR GEOTECH ENGINEER SHOULD DETERMINE IF CORROSIVE RESISTANT MATERIAL SHOULD BE USED IN ANY STEEL PARTS EXPOSED IN THE SOIL

DRAWN:	DATE:	JOB NUMBER:
AJM	2/10/21	ES6

REVISION:		
REVISION:	DATE:	DESCRIPTION:
	BY:	

**SITE INFORMATION:**

ES 6  
 ENVIROSERVER  
 ADVANCED WASTEWATER  
 TREATMENT SYSTEM

**SHEET TITLE:**

ES6-GRAV/NV

**SHEET NUMBER:**

1 OF 1

**NOTES:**

\*MATERIALS NOT SUPPLIED BY MICROSEPTEC

# ENVIROSERVER - ES SERIES ES6-GRAV/NV/UV



31 AFFONSO DRIVE  
MOUND HOUSE, NV 89706  
1(877)-4SEPTIC [1(877)473-7842]  
WWW.MICROSEPTEC.COM

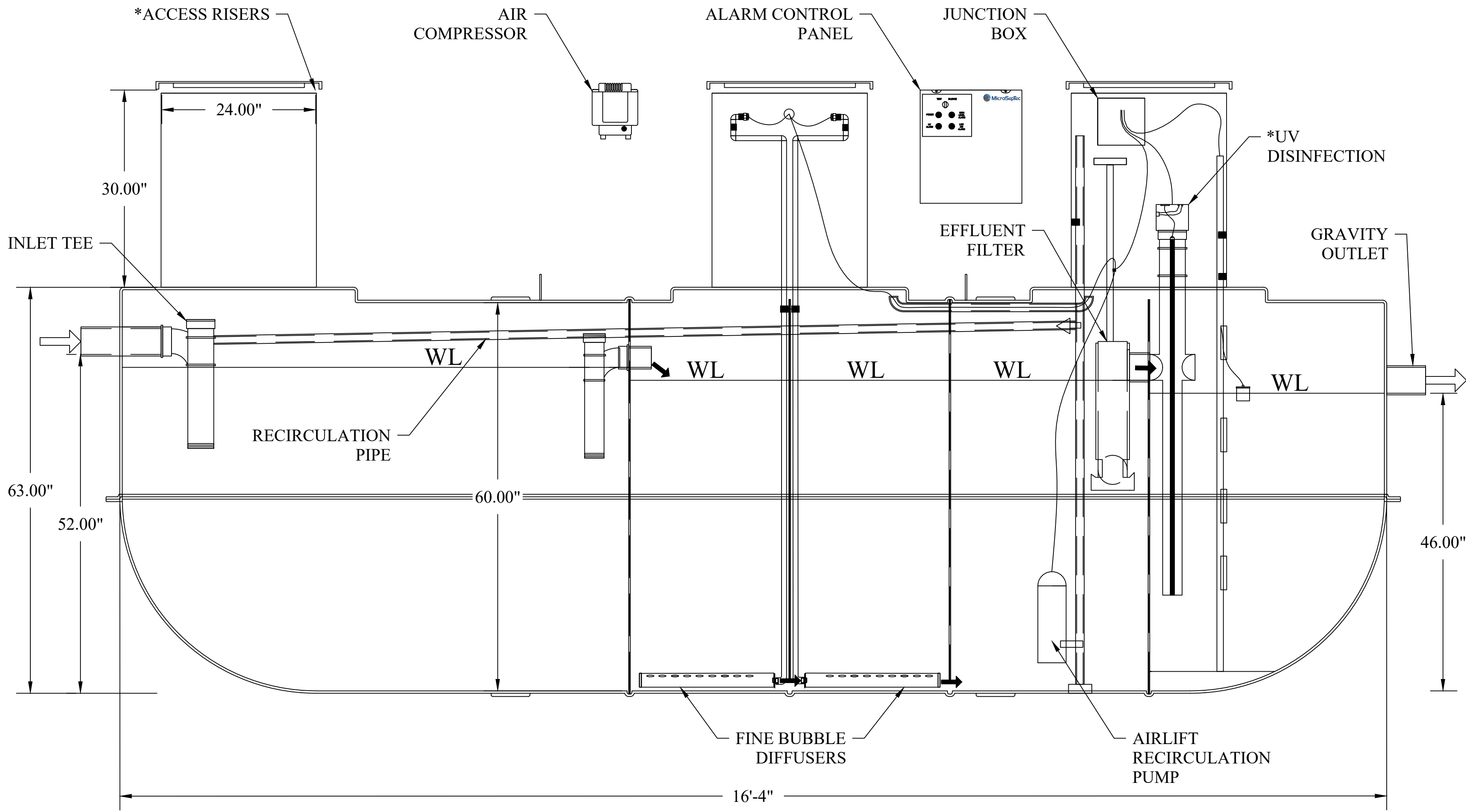
**DESCRIPTION:**

PRIMARY AND SECONDARY WASTEWATER TREATMENT DEVICE USING BOTH FIXED FILM AND SUSPENDED GROWTH WITH MULTI-STAGE AEROBIC PROCESS. TANK CAPACITIES LISTED ARE FOR STANDARD UNITS

**NOTES**

- GENERAL:
1. THE MIDDLE THREE CHAMBERS SHOULD NEVER BE PUMPED DRY, ESPECIALLY IN HIGH GROUNDWATER CONDITIONS
  2. RISERS AND RISER ADAPTERS NOT SUPPLIED BY MICROSEPTEC
  3. PLUMBING DIMENSIONS FROM OUTSIDE EDGE OF TANK TO INVERT OF INLET AND OUTLET
  4. CONTRACTOR TO PROVIDE ADDITIONAL PLUMBING FOR ANY BURIAL DEPTH GREATER THAN 4FT
  5. SITE-SPECIFIC CHARACTERISTICS INCLUDING BUT NOT LIMITED TO: BURIAL DEPTH, TRAFFIC OR OTHER EXTERNAL LOADING, SEASONAL GROUNDWATER, AND SOIL CHARACTERISTICS SHOULD BE CONFIRMED WITH A LOCAL DESIGN ENGINEER BEFORE INSTALLATION

- TANK BURIAL:
6. THE DESIGNED TANK BURIAL DEPTH IS 2FT TO 6FT. ANY TANK BURIED BEYOND THAT RANGE MUST BE ANALYZED BY A LOCAL DESIGN ENGINEER
  7. COVER TO BE A MINIMUM OF 2FT.
  8. ENGINEERED BACKFILL TO BE A MINIMUM OF 12" ALONG SIDES AND BOTTOM OF TANK
  9. GEOLOGIST OR GEOTECHNICAL ENGINEER TO DETERMINE IF ANCHORS AND TEXTILE FILTER ARE REQUIRED.
  10. DEPTH OF SOIL SLOPE CUT PER LOCAL CODE OR SOIL REPORT
  11. VERTICAL CUT FOR FILL HEIGHT CAN BE DONE IF APPROVED BY LOCAL CODE OR SOIL ENGINEER
  12. GEOLOGIST OR GEOTECH ENGINEER SHOULD DETERMINE IF CORROSIVE RESISTANT MATERIAL SHOULD BE USED IN ANY STEEL PARTS EXPOSED IN THE SOIL



DESIGN TREATMENT CAPACITY (gpd)	600
TOTAL TANK CAPACITY (gal)	2000
TOTAL LENGTH	16'-4"
DIAMETER (in.)	60
INLET HEIGHT (in.)	52
OUTLET HEIGHT (in.)	46
BIOMEDIA VOLUME (cu.ft.)	20
AIR DIFFUSER	2-EDI FINE BUBBLE
AIR COMPRESSOR	HIBLOW 120LL
RECIRCULATION CONTROL	NEEDLE VALVE
ALARM CONTROL PANEL	MCP-G
TELEMETRY	OPTIONAL
DISINFECTION	SALCOR 3G

**NOTES:**

\*MATERIALS NOT SUPPLIED BY MICROSEPTEC

DRAWN:	DATE:	JOB NUMBER:
AJM	2/10/21	ES6

REVISION:		
REVISION:	DATE:	DESCRIPTION:
	BY:	

SITE INFORMATION:  
  
ES 6  
ENVIROSERVER  
ADVANCED WASTEWATER  
TREATMENT SYSTEM

SHEET TITLE:  
  
ES6-GRAV/NV/UV

SHEET NUMBER:  
  
1 OF 1

# ENVIROSERVER - ES SERIES ES6-GRAV/MRP

**DESCRIPTION:**

PRIMARY AND SECONDARY WASTEWATER TREATMENT DEVICE USING BOTH FIXED FILM AND SUSPENDED GROWTH WITH MULTI-STAGE AEROBIC PROCESS. TANK CAPACITIES LISTED ARE FOR STANDARD UNITS



31 AFFONSO DRIVE  
MOUND HOUSE, NV 89706  
1(877)-4SEPTIC [1(877)473-7842]  
WWW.MICROSEPTEC.COM

**NOTES**

- GENERAL:
- THE MIDDLE THREE CHAMBERS SHOULD NEVER BE PUMPED DRY, ESPECIALLY IN HIGH GROUNDWATER CONDITIONS
  - RISERS AND RISER ADAPTERS NOT SUPPLIED BY MICROSEPTEC
  - PLUMBING DIMENSIONS FROM OUTSIDE EDGE OF TANK TO INVERT OF INLET AND OUTLET
  - CONTRACTOR TO PROVIDE ADDITIONAL PLUMBING FOR ANY BURIAL DEPTH GREATER THAN 4FT
  - SITE-SPECIFIC CHARACTERISTICS INCLUDING BUT NOT LIMITED TO: BURIAL DEPTH, TRAFFIC OR OTHER EXTERNAL LOADING, SEASONAL GROUNDWATER, AND SOIL CHARACTERISTICS SHOULD BE CONFIRMED WITH A LOCAL DESIGN ENGINEER BEFORE INSTALLATION

- TANK BURIAL:
- THE DESIGNED TANK BURIAL DEPTH IS 2FT TO 6FT. ANY TANK BURIED BEYOND THAT RANGE MUST BE ANALYZED BY A LOCAL DESIGN ENGINEER
  - COVER TO BE A MINIMUM OF 2FT.
  - ENGINEERED BACKFILL TO BE A MINIMUM OF 12" ALONG SIDES AND BOTTOM OF TANK
  - GEOLOGIST OR GEOTECHNICAL ENGINEER TO DETERMINE IF ANCHORS AND TEXTILE FILTER ARE REQUIRED.
  - DEPTH OF SOIL SLOPE CUT PER LOCAL CODE OR SOIL REPORT
  - VERTICAL CUT FOR FILL HEIGHT CAN BE DONE IF APPROVED BY LOCAL CODE OR SOIL ENGINEER
  - GEOLOGIST OR GEOTECH ENGINEER SHOULD DETERMINE IF CORROSIVE RESISTANT MATERIAL SHOULD BE USED IN ANY STEEL PARTS EXPOSED IN THE SOIL

DESIGN TREATMENT CAPACITY (gpd)	600
TOTAL TANK CAPACITY (gal)	2000
TOTAL LENGTH	16'-4"
DIAMETER (in.)	60
INLET HEIGHT (in.)	52
OUTLET HEIGHT (in.)	46
BIOMEDIA VOLUME (cu.ft.)	20
AIR DIFFUSER	2-EDI FINE BUBBLE
AIR COMPRESSOR	HIBLOW 120LL
RECIRCULATION CONTROL	MECHANICAL
ALARM CONTROL PANEL	MCPR-G
TELEMETRY	OPTIONAL

DRAWN:	DATE:	JOB NUMBER:
AJM	2/10/21	ES6

REVISION:		
REVISION:	DATE:	DESCRIPTION:
	BY:	

**SITE INFORMATION:**

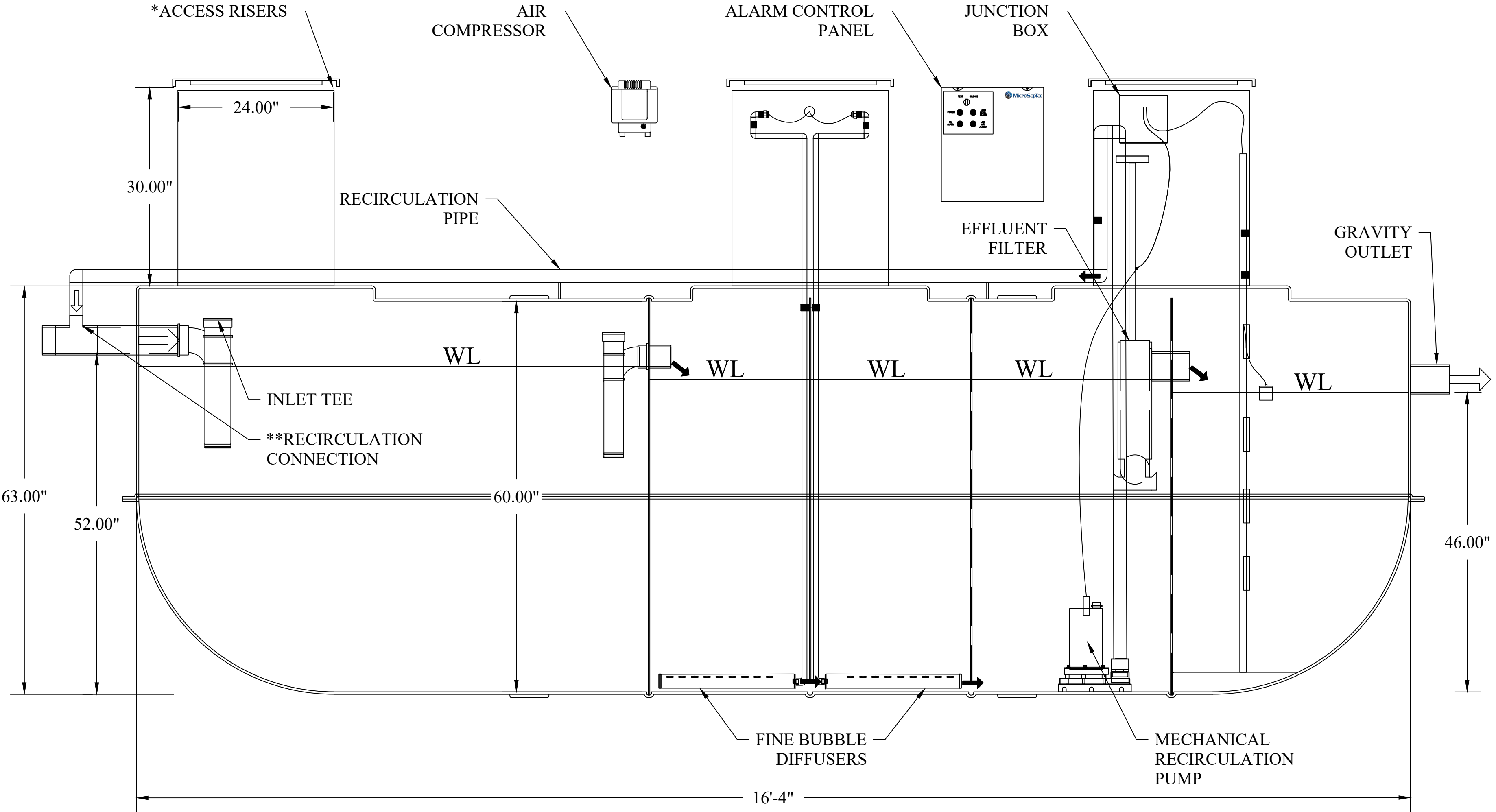
ES 6  
ENVIROSERVER  
ADVANCED WASEWATER  
TREATMENT SYSTEM

**SHEET TITLE:**

ES6-GRAV/MRP

**SHEET NUMBER:**

1 OF 1



**NOTES:**

- \*MATERIALS NOT SUPPLIED BY MICROSEPTEC
- \*\*RECIRCULATION CONNECTION MUST BE LOCATED AT A MINIMUM OF 3FT FROM THE TANK

# ENVIROSERVER - ES SERIES ES6-GRAV/MRP/UV



31 AFFONSO DRIVE  
MOUND HOUSE, NV 89706  
1(877)-4SEPTIC [1(877)473-7842]  
WWW.MICROSEPTEC.COM

## DESCRIPTION:

PRIMARY AND SECONDARY WASTEWATER TREATMENT DEVICE USING BOTH FIXED FILM AND SUSPENDED GROWTH WITH MULTI-STAGE AEROBIC PROCESS. TANK CAPACITIES LISTED ARE FOR STANDARD UNITS

## NOTES

- GENERAL:
1. THE MIDDLE THREE CHAMBERS SHOULD NEVER BE PUMPED DRY, ESPECIALLY IN HIGH GROUNDWATER CONDITIONS
  2. RISERS AND RISER ADAPTERS NOT SUPPLIED BY MICROSEPTEC
  3. PLUMBING DIMENSIONS FROM OUTSIDE EDGE OF TANK TO INVERT OF INLET AND OUTLET
  4. CONTRACTOR TO PROVIDE ADDITIONAL PLUMBING FOR ANY BURIAL DEPTH GREATER THAN 4FT
  5. SITE-SPECIFIC CHARACTERISTICS INCLUDING BUT NOT LIMITED TO: BURIAL DEPTH, TRAFFIC OR OTHER EXTERNAL LOADING, SEASONAL GROUNDWATER, AND SOIL CHARACTERISTICS SHOULD BE CONFIRMED WITH A LOCAL DESIGN ENGINEER BEFORE INSTALLATION

- TANK BURIAL:
6. THE DESIGNED TANK BURIAL DEPTH IS 2FT TO 6FT. ANY TANK BURIED BEYOND THAT RANGE MUST BE ANALYZED BY A LOCAL DESIGN ENGINEER
  7. COVER TO BE A MINIMUM OF 2FT.
  8. ENGINEERED BACKFILL TO BE A MINIMUM OF 12" ALONG SIDES AND BOTTOM OF TANK
  9. GEOLOGIST OR GEOTECHNICAL ENGINEER TO DETERMINE IF ANCHORS AND TEXTILE FILTER ARE REQUIRED.
  10. DEPTH OF SOIL SLOPE CUT PER LOCAL CODE OR SOIL REPORT
  11. VERTICAL CUT FOR FILL HEIGHT CAN BE DONE IF APPROVED BY LOCAL CODE OR SOIL ENGINEER
  12. GEOLOGIST OR GEOTECH ENGINEER SHOULD DETERMINE IF CORROSIVE RESISTANT MATERIAL SHOULD BE USED IN ANY STEEL PARTS EXPOSED IN THE SOIL

DESIGN TREATMENT CAPACITY (gpd)	600
TOTAL TANK CAPACITY (gal)	2000
TOTAL LENGTH	16'-4"
DIAMETER (in.)	60
INLET HEIGHT (in.)	52
OUTLET HEIGHT (in.)	46
BIOMEDIA VOLUME (cu.ft.)	20
AIR DIFFUSER	2-EDI FINE BUBBLE
AIR COMPRESSOR	HIBLOW 120LL
RECIRCULATION CONTROL	MECHANICAL
ALARM CONTROL PANEL	MCPR-G
TELEMETRY	OPTIONAL
DISINFECTION	SALCOR 3G

DRAWN:	DATE:	JOB NUMBER:
AJM	2/10/21	ES6

REVISION:		
REVISION:	DATE:	DESCRIPTION:
	BY:	

## SITE INFORMATION:

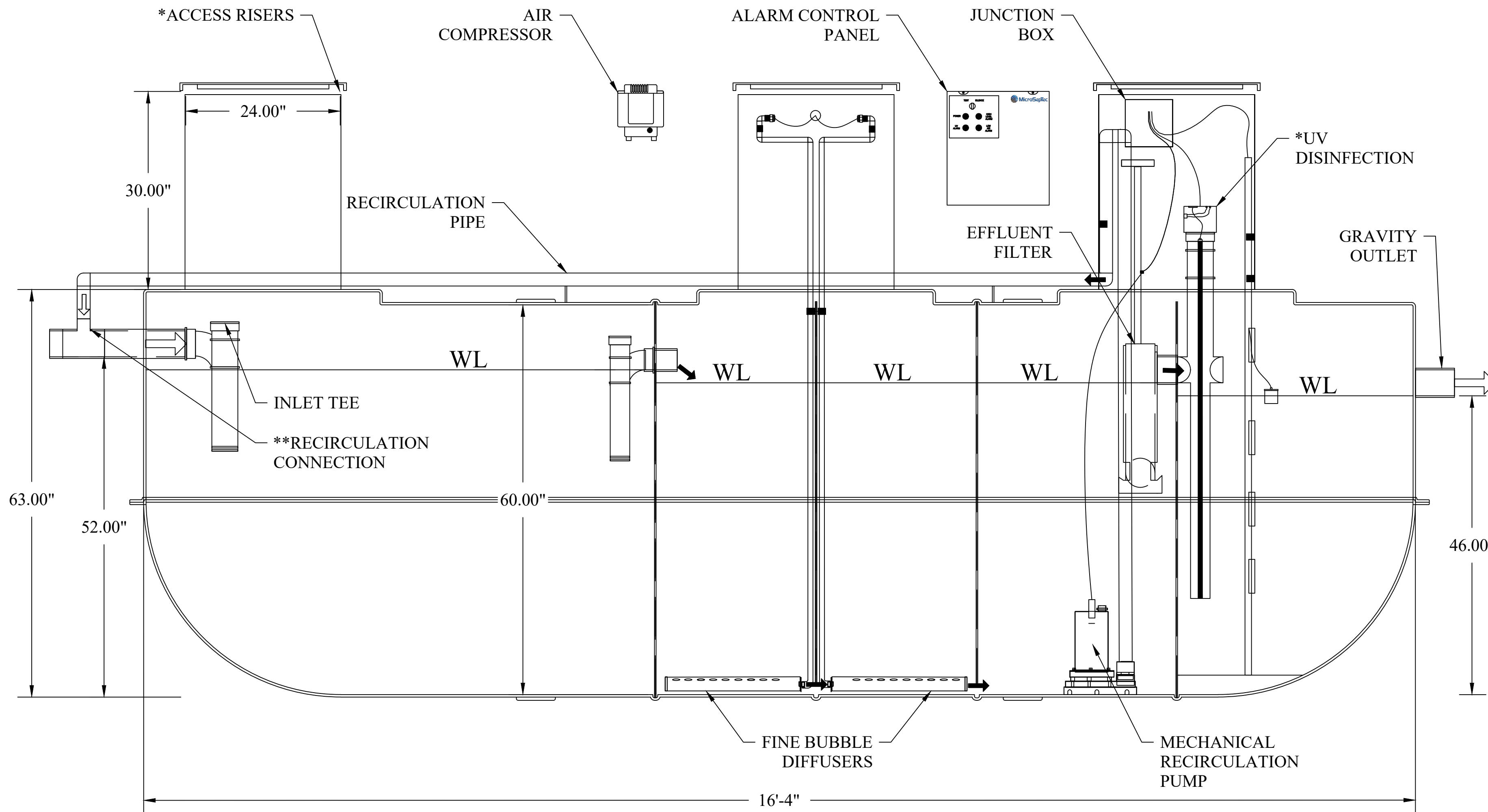
ES 6  
ENVIROSERVER  
ADVANCED WASTEWATER  
TREATMENT SYSTEM

## SHEET TITLE:

ES6-GRAV/MRP/UV

## SHEET NUMBER:

1 OF 1



## NOTES:

- \*MATERIALS NOT SUPPLIED BY MICROSEPTEC
- \*\*RECIRCULATION CONNECTION MUST BE LOCATED AT A MINIMUM OF 3FT FROM THE TANK



# ENVIROSERVER - ES SERIES ES6-PUMP/MRP



31 AFFONSO DRIVE  
MOUND HOUSE, NV 89706  
1(877)-4SEPTIC [1(877)473-7842]  
WWW.MICROSEPTEC.COM

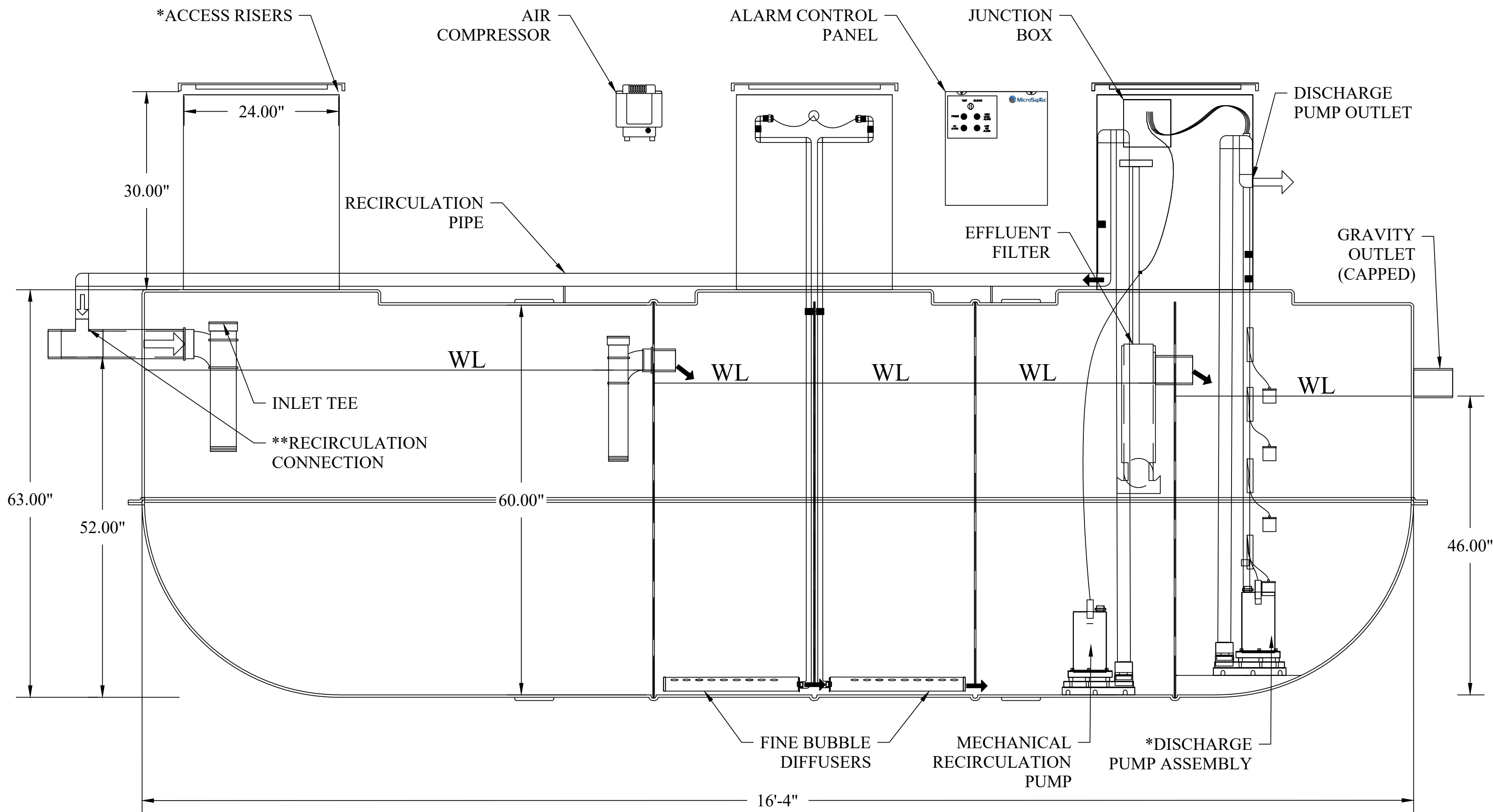
**DESCRIPTION:**

PRIMARY AND SECONDARY WASTEWATER TREATMENT DEVICE USING BOTH FIXED FILM AND SUSPENDED GROWTH WITH MULTI-STAGE AEROBIC PROCESS. TANK CAPACITIES LISTED ARE FOR STANDARD UNITS

**NOTES**

- GENERAL:
- THE MIDDLE THREE CHAMBERS SHOULD NEVER BE PUMPED DRY, ESPECIALLY IN HIGH GROUNDWATER CONDITIONS
  - RISERS AND RISER ADAPTERS NOT SUPPLIED BY MICROSEPTEC
  - PLUMBING DIMENSIONS FROM OUTSIDE EDGE OF TANK TO INVERT OF INLET AND OUTLET CONTRACTOR TO PROVIDE ADDITIONAL PLUMBING FOR ANY BURIAL DEPTH GREATER THAN 4FT
  - SITE-SPECIFIC CHARACTERISTICS INCLUDING BUT NOT LIMITED TO: BURIAL DEPTH, TRAFFIC OR OTHER EXTERNAL LOADING, SEASONAL GROUNDWATER, AND SOIL CHARACTERISTICS SHOULD BE CONFIRMED WITH A LOCAL DESIGN ENGINEER BEFORE INSTALLATION

- TANK BURIAL:
- THE DESIGNED TANK BURIAL DEPTH IS 2FT TO 6FT. ANY TANK BURIED BEYOND THAT RANGE MUST BE ANALYZED BY A LOCAL DESIGN ENGINEER
  - COVER TO BE A MINIMUM OF 2FT.
  - ENGINEERED BACKFILL TO BE A MINIMUM OF 12" ALONG SIDES AND BOTTOM OF TANK
  - GEOLOGIST OR GEOTECHNICAL ENGINEER TO DETERMINE IF ANCHORS AND TEXTILE FILTER ARE REQUIRED.
  - DEPTH OF SOIL SLOPE CUT PER LOCAL CODE OR SOIL REPORT
  - VERTICAL CUT FOR FILL HEIGHT CAN BE DONE IF APPROVED BY LOCAL CODE OR SOIL ENGINEER
  - GEOLOGIST OR GEOTECH ENGINEER SHOULD DETERMINE IF CORROSIVE RESISTANT MATERIAL SHOULD BE USED IN ANY STEEL PARTS EXPOSED IN THE SOIL



DESIGN TREATMENT CAPACITY (gpd)	600
TOTAL TANK CAPACITY (gal)	2000
TOTAL LENGTH	16'-4"
DIAMETER (in.)	60
INLET HEIGHT (in.)	52
OUTLET HEIGHT (in.)	46
BIOMEDIA VOLUME (cu.ft.)	20
AIR DIFFUSER	2-EDI FINE BUBBLE
AIR COMPRESSOR	HIBLOW 120LL
RECIRCULATION CONTROL	MECHANICAL
ALARM CONTROL PANEL	MCPR-DP
TELEMETRY	OPTIONAL
DISCHARGE PUMP	SIMPLEX OR DUPLEX

DRAWN:	DATE:	JOB NUMBER:
AJM	2/10/21	ES6

REVISION:		
REVISION:	DATE:	DESCRIPTION:
	BY:	

**SITE INFORMATION:**

ES 6  
ENVIROSERVER  
ADVANCED WASTEWATER  
TREATMENT SYSTEM

**SHEET TITLE:**

ES6-PUMP/MRP

**SHEET NUMBER:**

1 OF 1

**NOTES:**

- \*MATERIALS NOT SUPPLIED BY MICROSEPTEC
- \*\*RECIRCULATION CONNECTION MUST BE LOCATED AT A MINIMUM OF 3FT FROM THE TANK

# ENVIROSERVER - ES SERIES ES6-PUMP/MRP/UV



31 AFFONSO DRIVE  
 MOUND HOUSE, NV 89706  
 1(877)-4SEPTIC [1(877)473-7842]  
 WWW.MICROSEPTEC.COM

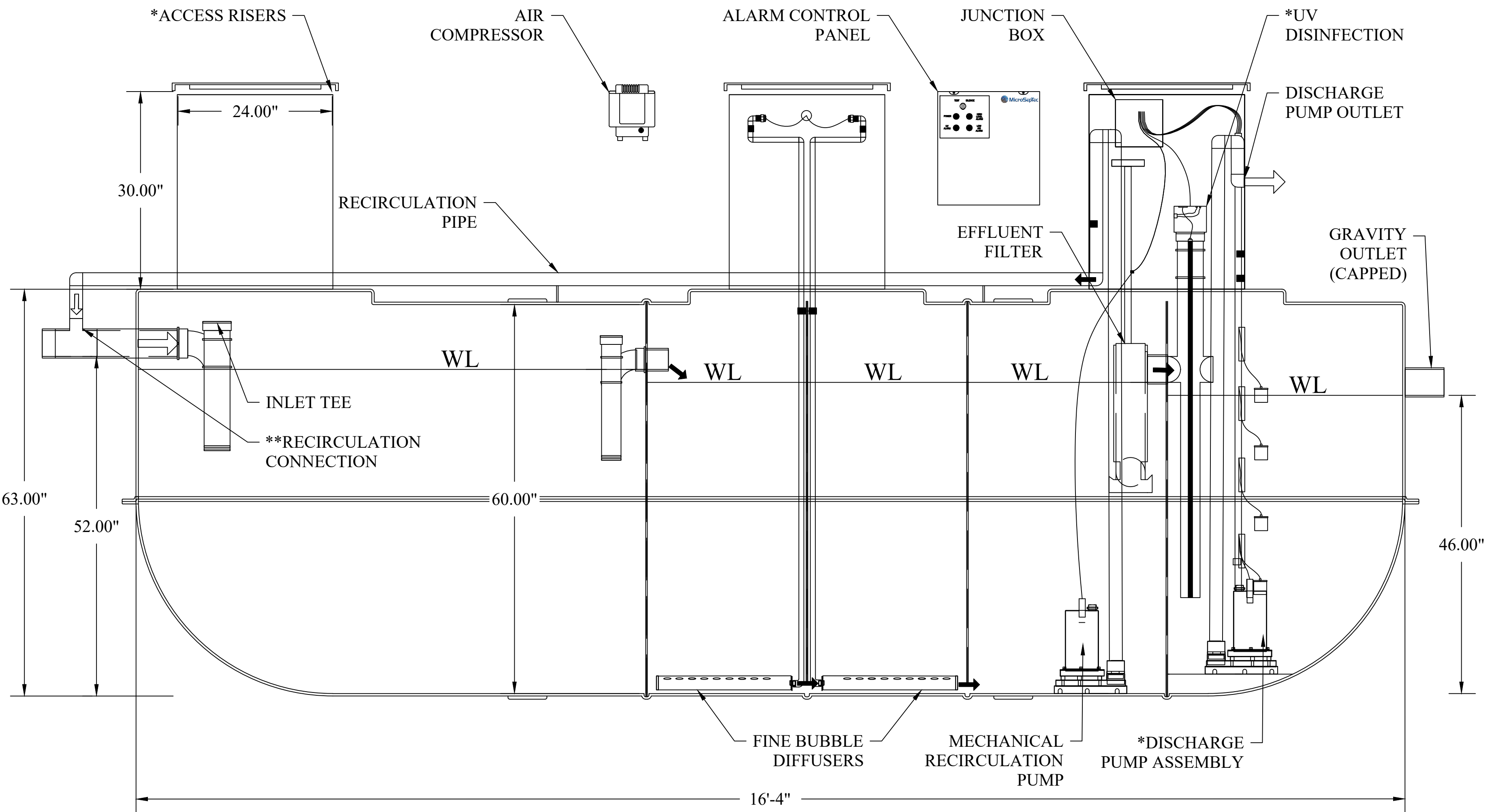
**DESCRIPTION:**

PRIMARY AND SECONDARY WASTEWATER TREATMENT DEVICE USING BOTH FIXED FILM AND SUSPENDED GROWTH WITH MULTI-STAGE AEROBIC PROCESS. TANK CAPACITIES LISTED ARE FOR STANDARD UNITS

**NOTES**

- GENERAL:
1. THE MIDDLE THREE CHAMBERS SHOULD NEVER BE PUMPED DRY, ESPECIALLY IN HIGH GROUNDWATER CONDITIONS
  2. RISERS AND RISER ADAPTERS NOT SUPPLIED BY MICROSEPTEC
  3. PLUMBING DIMENSIONS FROM OUTSIDE EDGE OF TANK TO INVERT OF INLET AND OUTLET
  4. CONTRACTOR TO PROVIDE ADDITIONAL PLUMBING FOR ANY BURIAL DEPTH GREATER THAN 4FT
  5. SITE-SPECIFIC CHARACTERISTICS INCLUDING BUT NOT LIMITED TO: BURIAL DEPTH, TRAFFIC OR OTHER EXTERNAL LOADING, SEASONAL GROUNDWATER, AND SOIL CHARACTERISTICS SHOULD BE CONFIRMED WITH A LOCAL DESIGN ENGINEER BEFORE INSTALLATION

- TANK BURIAL:
6. THE DESIGNED TANK BURIAL DEPTH IS 2FT TO 6FT. ANY TANK BURIED BEYOND THAT RANGE MUST BE ANALYZED BY A LOCAL DESIGN ENGINEER
  7. COVER TO BE A MINIMUM OF 2FT.
  8. ENGINEERED BACKFILL TO BE A MINIMUM OF 12" ALONG SIDES AND BOTTOM OF TANK
  9. GEOLOGIST OR GEOTECHNICAL ENGINEER TO DETERMINE IF ANCHORS AND TEXTILE FILTER ARE REQUIRED.
  10. DEPTH OF SOIL SLOPE CUT PER LOCAL CODE OR SOIL REPORT
  11. VERTICAL CUT FOR FILL HEIGHT CAN BE DONE IF APPROVED BY LOCAL CODE OR SOIL ENGINEER
  12. GEOLOGIST OR GEOTECH ENGINEER SHOULD DETERMINE IF CORROSIVE RESISTANT MATERIAL SHOULD BE USED IN ANY STEEL PARTS EXPOSED IN THE SOIL



DESIGN TREATMENT CAPACITY (gpd)	600
TOTAL TANK CAPACITY (gal)	2000
TOTAL LENGTH	16'-4"
DIAMETER (in.)	60
INLET HEIGHT (in.)	52
OUTLET HEIGHT (in.)	46
BIOMEDIA VOLUME (cu.ft.)	20
AIR DIFFUSER	2-EDI FINE BUBBLE
AIR COMPRESSOR	HIBLOW 120LL
RECIRCULATION CONTROL	MECHANICAL
ALARM CONTROL PANEL	MCPR-DP
TELEMETRY	OPTIONAL
DISCHARGE PUMP	SIMPLEX OR DUPLEX
DISINFECTION	SALCOR 3G

DRAWN:	DATE:	JOB NUMBER:
AJM	2/10/21	ES6

REVISION:		
REVISION:	DATE:	DESCRIPTION:
	BY:	

**SITE INFORMATION:**

ES 6  
 ENVIROSERVER  
 ADVANCED WASTEWATER  
 TREATMENT SYSTEM

**SHEET TITLE:**

ES6-PUMP/MRP/UV

**SHEET NUMBER:**

1 OF 1

**NOTES:**

- \*MATERIALS NOT SUPPLIED BY MICROSEPTEC
- \*\*RECIRCULATION CONNECTION MUST BE LOCATED AT A MINIMUM OF 3FT FROM THE TANK

# ENVIROSERVER - ES SERIES ES6-PUMP/SOL



31 AFFONSO DRIVE  
MOUND HOUSE, NV 89706  
1(877)-4SEPTIC [1(877)473-7842]  
WWW.MICROSEPTEC.COM

## DESCRIPTION:

PRIMARY AND SECONDARY WASTEWATER TREATMENT DEVICE USING BOTH FIXED FILM AND SUSPENDED GROWTH WITH MULTI-STAGE AEROBIC PROCESS. TANK CAPACITIES LISTED ARE FOR STANDARD UNITS

## NOTES

- GENERAL:
1. THE MIDDLE THREE CHAMBERS SHOULD NEVER BE PUMPED DRY, ESPECIALLY IN HIGH GROUNDWATER CONDITIONS
  2. RISERS AND RISER ADAPTERS NOT SUPPLIED BY MICROSEPTEC
  3. PLUMBING DIMENSIONS FROM OUTSIDE EDGE OF TANK TO INVERT OF INLET AND OUTLET
  4. CONTRACTOR TO PROVIDE ADDITIONAL PLUMBING FOR ANY BURIAL DEPTH GREATER THAN 4FT
  5. SITE-SPECIFIC CHARACTERISTICS INCLUDING BUT NOT LIMITED TO: BURIAL DEPTH, TRAFFIC OR OTHER EXTERNAL LOADING, SEASONAL GROUNDWATER, AND SOIL CHARACTERISTICS SHOULD BE CONFIRMED WITH A LOCAL DESIGN ENGINEER BEFORE INSTALLATION

- TANK BURIAL:
6. THE DESIGNED TANK BURIAL DEPTH IS 2FT TO 6FT. ANY TANK BURIED BEYOND THAT RANGE MUST BE ANALYZED BY A LOCAL DESIGN ENGINEER
  7. COVER TO BE A MINIMUM OF 2FT.
  8. ENGINEERED BACKFILL TO BE A MINIMUM OF 12" ALONG SIDES AND BOTTOM OF TANK
  9. GEOLOGIST OR GEOTECHNICAL ENGINEER TO DETERMINE IF ANCHORS AND TEXTILE FILTER ARE REQUIRED.
  10. DEPTH OF SOIL SLOPE CUT PER LOCAL CODE OR SOIL REPORT
  11. VERTICAL CUT FOR FILL HEIGHT CAN BE DONE IF APPROVED BY LOCAL CODE OR SOIL ENGINEER
  12. GEOLOGIST OR GEOTECH ENGINEER SHOULD DETERMINE IF CORROSIVE RESISTANT MATERIAL SHOULD BE USED IN ANY STEEL PARTS EXPOSED IN THE SOIL

DESIGN TREATMENT CAPACITY (gpd)	600
TOTAL TANK CAPACITY (gal)	2000
TOTAL LENGTH	16'-4"
DIAMETER (in.)	60
INLET HEIGHT (in.)	52
OUTLET HEIGHT (in.)	46
BIOMEDIA VOLUME (cu.ft.)	20
AIR DIFFUSER	2-EDI FINE BUBBLE
AIR COMPRESSOR	HIBLOW 120LL
RECIRCULATION CONTROL	SOLENOID
ALARM CONTROL PANEL	MCPR-DP
TELEMETRY	OPTIONAL
DISCHARGE PUMP	SIMPLEX OR DUPLEX

DRAWN:	DATE:	JOB NUMBER:
AJM	2/10/21	ES6

REVISION:		
REVISION:	DATE: BY:	DESCRIPTION:

## SITE INFORMATION:

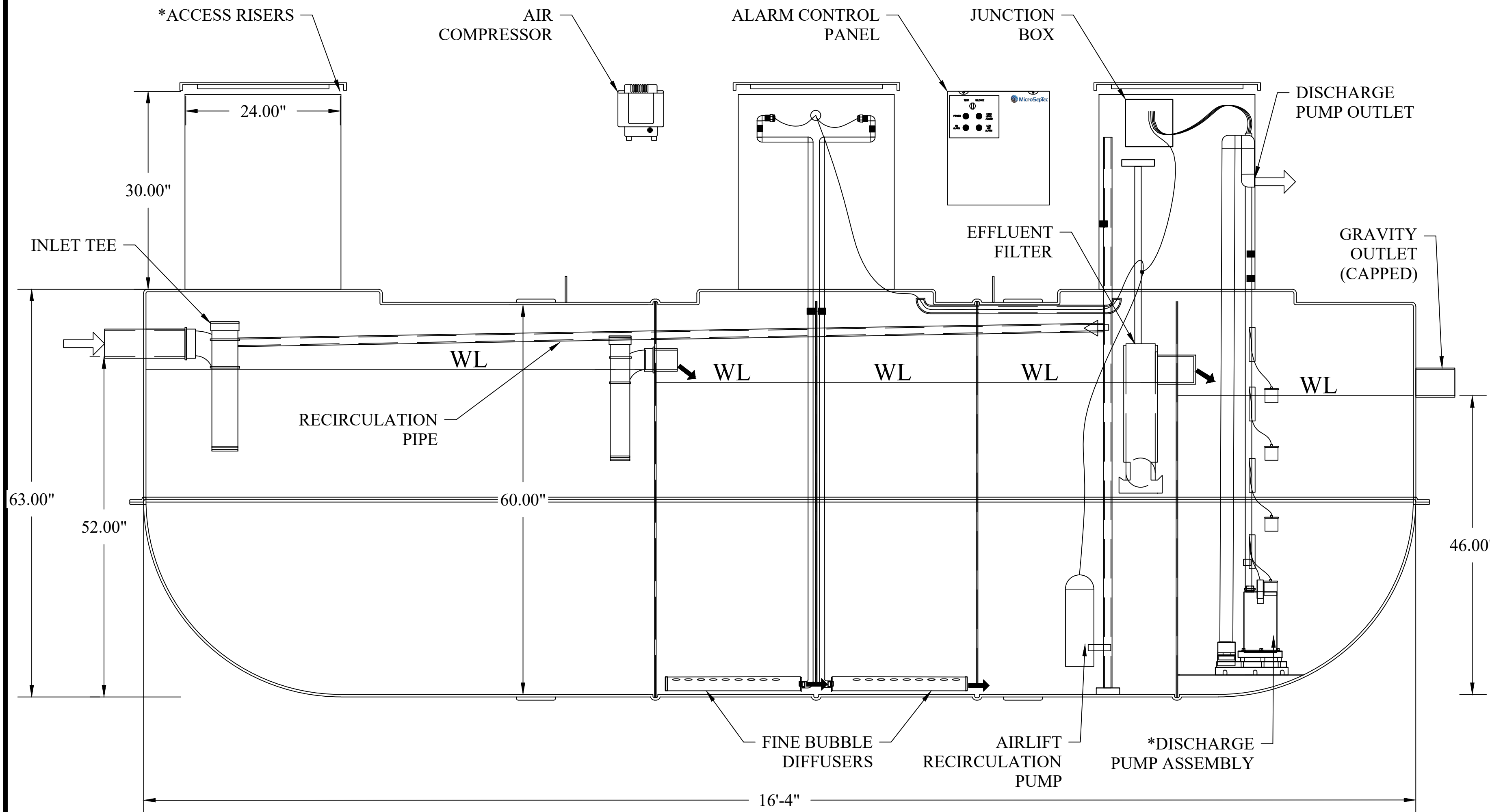
ES 6  
ENVIROSERVER  
ADVANCED WASTEWATER  
TREATMENT SYSTEM

## SHEET TITLE:

ES6-PUMP/SOL

## SHEET NUMBER:

1 OF 1



## NOTES:

\*MATERIALS NOT SUPPLIED BY MICROSEPTEC

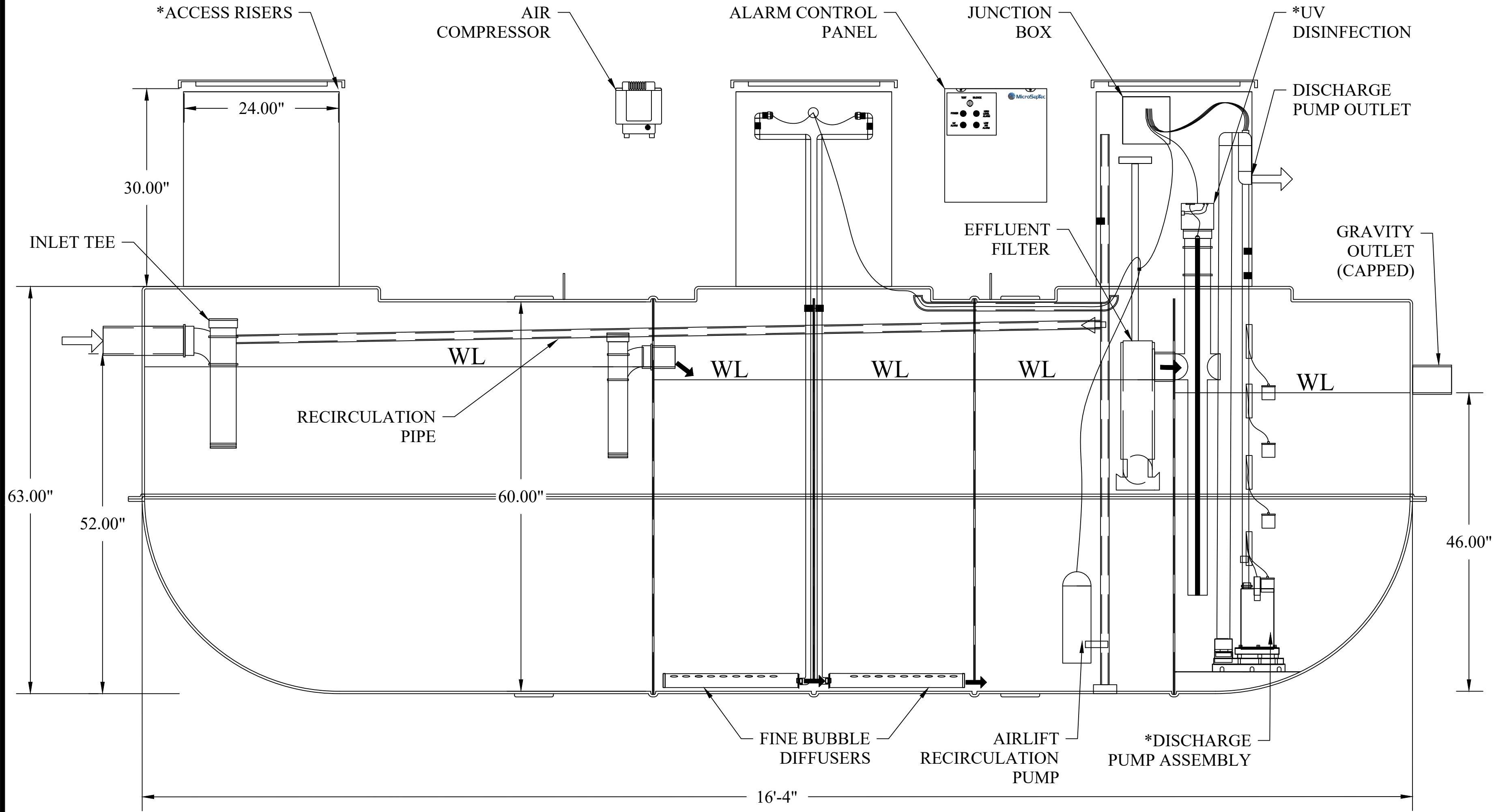
# ENVIROSERVER - ES SERIES ES6-PUMP/SOL/UV



31 AFFONSO DRIVE  
 MOUND HOUSE, NV 89706  
 1(877)-4SEPTIC [1(877)473-7842]  
 WWW.MICROSEPTEC.COM

**DESCRIPTION:**

PRIMARY AND SECONDARY WASTEWATER TREATMENT DEVICE USING BOTH FIXED FILM AND SUSPENDED GROWTH WITH MULTI-STAGE AEROBIC PROCESS. TANK CAPACITIES LISTED ARE FOR STANDARD UNITS



DESIGN TREATMENT CAPACITY (gpd)	600
TOTAL TANK CAPACITY (gal)	2000
TOTAL LENGTH	16'-4"
DIAMETER (in.)	60
INLET HEIGHT (in.)	52
OUTLET HEIGHT (in.)	46
BIOMEDIA VOLUME (cu.ft.)	20
AIR DIFFUSER	2-EDI FINE BUBBLE
AIR COMPRESSOR	HIBLOW 120LL
RECIRCULATION CONTROL	SOLENOID
ALARM CONTROL PANEL	MCPR-DP
TELEMETRY	OPTIONAL
DISCHARGE PUMP	SIMPLEX OR DUPLEX
DISINFECTION	SALCOR 3G

**NOTES**

- GENERAL:
1. THE MIDDLE THREE CHAMBERS SHOULD NEVER BE PUMPED DRY, ESPECIALLY IN HIGH GROUNDWATER CONDITIONS
  2. RISERS AND RISER ADAPTERS NOT SUPPLIED BY MICROSEPTEC
  3. PLUMBING DIMENSIONS FROM OUTSIDE EDGE OF TANK TO INVERT OF INLET AND OUTLET
  4. CONTRACTOR TO PROVIDE ADDITIONAL PLUMBING FOR ANY BURIAL DEPTH GREATER THAN 4FT
  5. SITE-SPECIFIC CHARACTERISTICS INCLUDING BUT NOT LIMITED TO: BURIAL DEPTH, TRAFFIC OR OTHER EXTERNAL LOADING, SEASONAL GROUNDWATER, AND SOIL CHARACTERISTICS SHOULD BE CONFIRMED WITH A LOCAL DESIGN ENGINEER BEFORE INSTALLATION

- TANK BURIAL:
6. THE DESIGNED TANK BURIAL DEPTH IS 2FT TO 6FT. ANY TANK BURIED BEYOND THAT RANGE MUST BE ANALYZED BY A LOCAL DESIGN ENGINEER
  7. COVER TO BE A MINIMUM OF 2FT.
  8. ENGINEERED BACKFILL TO BE A MINIMUM OF 12" ALONG SIDES AND BOTTOM OF TANK
  9. GEOLOGIST OR GEOTECHNICAL ENGINEER TO DETERMINE IF ANCHORS AND TEXTILE FILTER ARE REQUIRED
  10. DEPTH OF SOIL SLOPE CUT PER LOCAL CODE OR SOIL REPORT
  11. VERTICAL CUT FOR FILL HEIGHT CAN BE DONE IF APPROVED BY LOCAL CODE OR SOIL ENGINEER
  12. GEOLOGIST OR GEOTECHNICAL ENGINEER SHOULD DETERMINE IF CORROSIVE RESISTANT MATERIAL SHOULD BE USED IN ANY STEEL PARTS EXPOSED IN THE SOIL

DRAWN:	DATE:	JOB NUMBER:
AJM	2/10/21	ES6

REVISION:		
REVISION:	DATE:	DESCRIPTION:
	BY:	

SITE INFORMATION:

ES 6  
 ENVIROSERVER  
 ADVANCED WASEWATER  
 TREATMENT SYSTEM

SHEET TITLE:

ES6-PUMP/SOL/UV

SHEET NUMBER:

1 OF 1

**NOTES:**

\*MATERIALS NOT SUPPLIED BY MICROSEPTEC

**TANK LAYOUT (ELEVATION VIEW)**

# ENVIROSERVER - ES SERIES ES6-PUMP/NV



31 AFFONSO DRIVE  
MOUND HOUSE, NV 89706  
1(877)-4SEPTIC [1(877)473-7842]  
WWW.MICROSEPTEC.COM

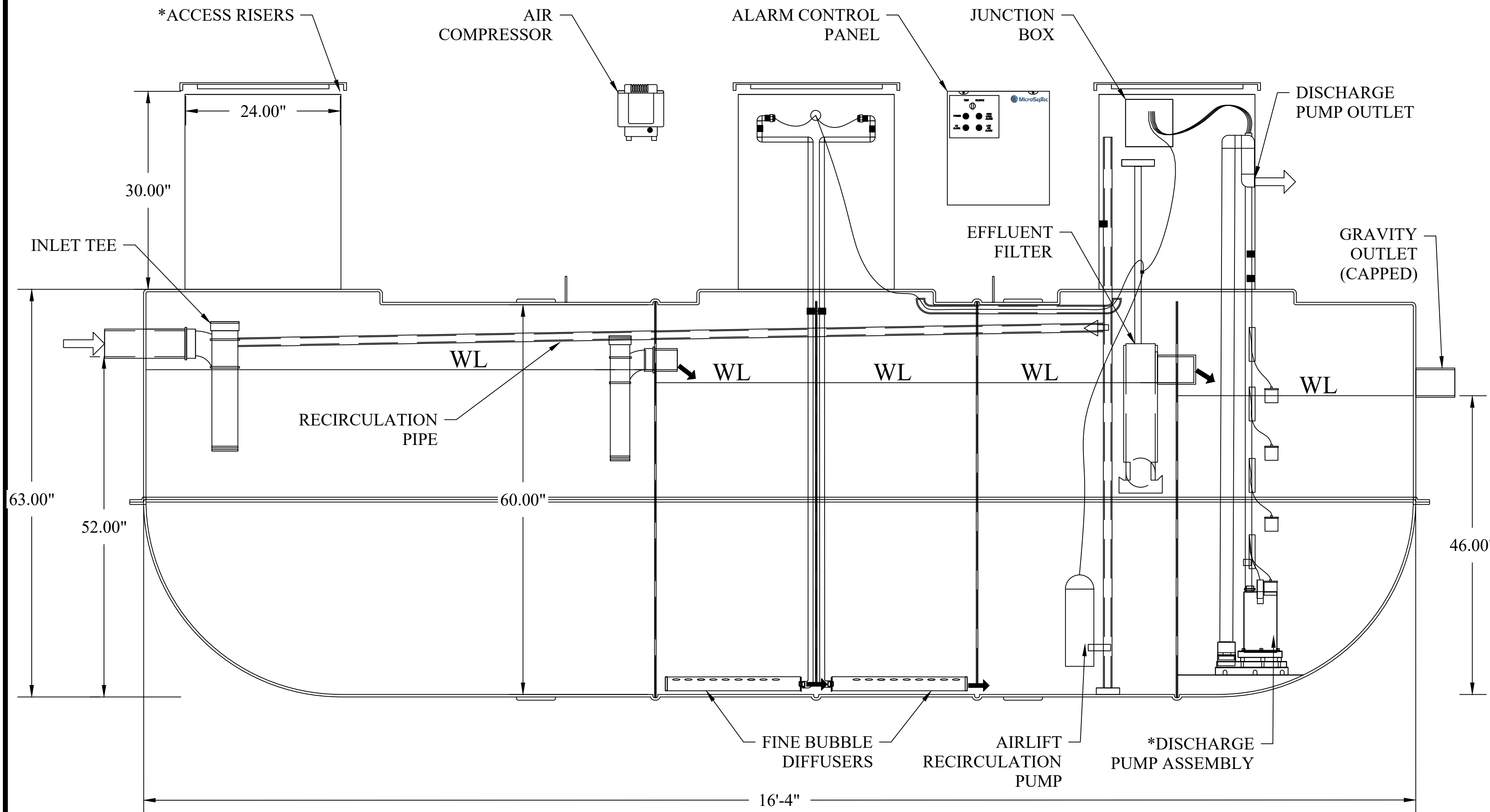
## DESCRIPTION:

PRIMARY AND SECONDARY WASTEWATER TREATMENT DEVICE USING BOTH FIXED FILM AND SUSPENDED GROWTH WITH MULTI-STAGE AEROBIC PROCESS. TANK CAPACITIES LISTED ARE FOR STANDARD UNITS

## NOTES

- GENERAL:
- THE MIDDLE THREE CHAMBERS SHOULD NEVER BE PUMPED DRY, ESPECIALLY IN HIGH GROUNDWATER CONDITIONS
  - RISERS AND RISER ADAPTERS NOT SUPPLIED BY MICROSEPTEC
  - PLUMBING DIMENSIONS FROM OUTSIDE EDGE OF TANK TO INVERT OF INLET AND OUTLET
  - CONTRACTOR TO PROVIDE ADDITIONAL PLUMBING FOR ANY BURIAL DEPTH GREATER THAN 4FT
  - SITE-SPECIFIC CHARACTERISTICS INCLUDING BUT NOT LIMITED TO: BURIAL DEPTH, TRAFFIC OR OTHER EXTERNAL LOADING, SEASONAL GROUNDWATER, AND SOIL CHARACTERISTICS SHOULD BE CONFIRMED WITH A LOCAL DESIGN ENGINEER BEFORE INSTALLATION

- TANK BURIAL:
- THE DESIGNED TANK BURIAL DEPTH IS 2FT TO 6FT. ANY TANK BURIED BEYOND THAT RANGE MUST BE ANALYZED BY A LOCAL DESIGN ENGINEER
  - COVER TO BE A MINIMUM OF 2FT.
  - ENGINEERED BACKFILL TO BE A MINIMUM OF 12" ALONG SIDES AND BOTTOM OF TANK
  - GEOLOGIST OR GEOTECHNICAL ENGINEER TO DETERMINE IF ANCHORS AND TEXTILE FILTER ARE REQUIRED.
  - DEPTH OF SOIL SLOPE CUT PER LOCAL CODE OR SOIL REPORT
  - VERTICAL CUT FOR FILL HEIGHT CAN BE DONE IF APPROVED BY LOCAL CODE OR SOIL ENGINEER
  - GEOLOGIST OR GEOTECH ENGINEER SHOULD DETERMINE IF CORROSIVE RESISTANT MATERIAL SHOULD BE USED IN ANY STEEL PARTS EXPOSED IN THE SOIL



DESIGN TREATMENT CAPACITY (gpd)	600
TOTAL TANK CAPACITY (gal)	2000
TOTAL LENGTH	16'-4"
DIAMETER (in.)	60
INLET HEIGHT (in.)	52
OUTLET HEIGHT (in.)	46
BIOMEDIA VOLUME (cu.ft.)	20
AIR DIFFUSER	2-EDI FINE BUBBLE
AIR COMPRESSOR	HIBLOW 120LL
RECIRCULATION CONTROL	NEEDLE VALVE
ALARM CONTROL PANEL	MCPR-DP
TELEMETRY	OPTIONAL
DISCHARGE PUMP	SIMPLEX OR DUPLEX

DRAWN:	DATE:	JOB NUMBER:
AJM	2/10/21	ES6

REVISION:		
REVISION:	DATE:	DESCRIPTION:
	BY:	

## SITE INFORMATION:

ES 6  
ENVIROSERVER  
ADVANCED WASTEWATER  
TREATMENT SYSTEM

## SHEET TITLE:

ES6-PUMP/NV

## SHEET NUMBER:

1 OF 1

## NOTES:

\*MATERIALS NOT SUPPLIED BY MICROSEPTEC

# ENVIROSERVER - ES SERIES ES6-PUMP/NV/UV



31 AFFONSO DRIVE  
 MOUND HOUSE, NV 89706  
 1(877)-4SEPTIC [1(877)473-7842]  
 WWW.MICROSEPTEC.COM

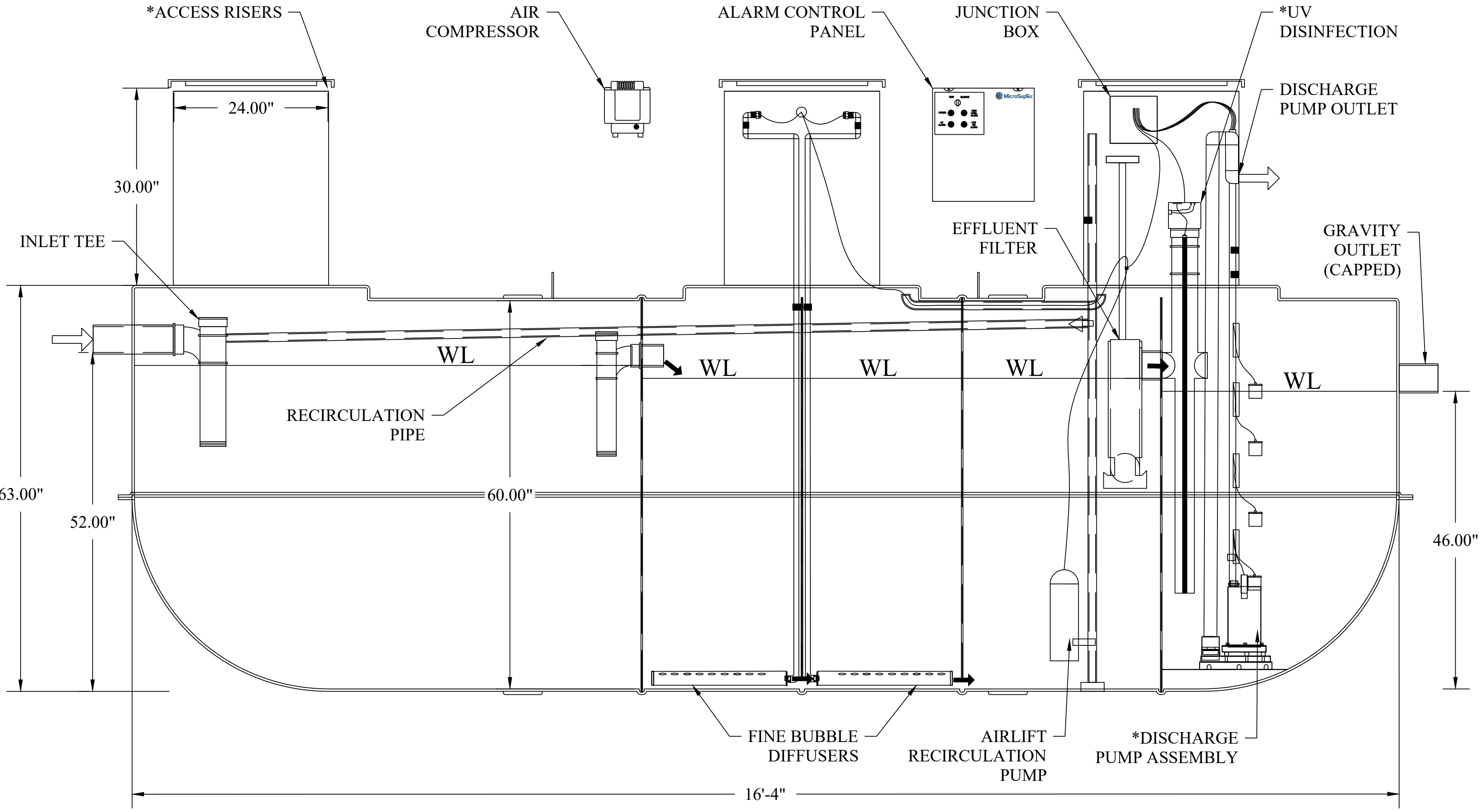
**DESCRIPTION:**

PRIMARY AND SECONDARY WASTEWATER TREATMENT DEVICE USING BOTH FIXED FILM AND SUSPENDED GROWTH WITH MULTI-STAGE AEROBIC PROCESS. TANK CAPACITIES LISTED ARE FOR STANDARD UNITS

**NOTES**

- GENERAL:**
1. THE MIDDLE THREE CHAMBERS SHOULD NEVER BE PUMPED DRY, ESPECIALLY IN HIGH GROUNDWATER CONDITIONS
  2. RISERS AND RISER ADAPTERS NOT SUPPLIED BY MICROSEPTEC
  3. PLUMBING DIMENSIONS FROM OUTSIDE EDGE OF TANK TO INVERT OF INLET AND OUTLET
  4. CONTRACTOR TO PROVIDE ADDITIONAL PLUMBING FOR ANY BURIAL DEPTH GREATER THAN 4FT
  5. SITE-SPECIFIC CHARACTERISTICS INCLUDING BUT NOT LIMITED TO: BURIAL DEPTH, TRAFFIC OR OTHER EXTERNAL LOADING, SEASONAL GROUNDWATER, AND SOIL CHARACTERISTICS SHOULD BE CONFIRMED WITH A LOCAL DESIGN ENGINEER BEFORE INSTALLATION

- TANK BURIAL:**
6. THE DESIGNED TANK BURIAL DEPTH IS 2FT TO 6FT. ANY TANK BURIED BEYOND THAT RANGE MUST BE ANALYZED BY A LOCAL DESIGN ENGINEER
  7. COVER TO BE A MINIMUM OF 2FT.
  8. ENGINEERED BACKFILL TO BE A MINIMUM OF 12" ALONG SIDES AND BOTTOM OF TANK
  9. GEOLOGIST OR GEOTECHNICAL ENGINEER TO DETERMINE IF ANCHORS AND TEXTILE FILTER ARE REQUIRED.
  10. DEPTH OF SOIL SLOPE CUT PER LOCAL CODE OR SOIL REPORT
  11. VERTICAL CUT FOR FILL HEIGHT CAN BE DONE IF APPROVED BY LOCAL CODE OR SOIL ENGINEER
  12. GEOLOGIST OR GEOTECH ENGINEER SHOULD DETERMINE IF CORROSIVE RESISTANT MATERIAL SHOULD BE USED IN ANY STEEL PARTS EXPOSED IN THE SOIL



DESIGN TREATMENT CAPACITY (gpd)	600
TOTAL TANK CAPACITY (gal)	2000
TOTAL LENGTH	16'-4"
DIAMETER (in.)	60
INLET HEIGHT (in.)	52
OUTLET HEIGHT (in.)	46
BIOMEDIA VOLUME (cu.ft.)	20
AIR DIFFUSER	2-EDI FINE BUBBLE
AIR COMPRESSOR	HIBLOW 120LL
RECIRCULATION CONTROL	NEEDLE VALVE
ALARM CONTROL PANEL	MCPR-DP
TELEMETRY	OPTIONAL
DISCHARGE PUMP	SIMPLEX OR DUPLEX
DISINFECTION	SALCOR 3G

DRAWN:	DATE:	JOB NUMBER:
AJM	2/10/21	ES6

REVISION:		
REVISION:	DATE:	DESCRIPTION:
	BY:	

**SITE INFORMATION:**

ES 6  
 ENVIROSERVER  
 ADVANCED WASEWATER  
 TREATMENT SYSTEM

**SHEET TITLE:**

ES6-PUMP/NV/UV

**SHEET NUMBER:**

1 OF 1

**NOTES:**

\*MATERIALS NOT SUPPLIED BY MICROSEPTEC