

CLiP 4X (C4X24DC)

EXTERIOR IP67 LINEAR LED ACCENT LIGHTING, LOW-POWER
24VDC REMOTE POWER SYSTEM



INSTALLATION INSTRUCTIONS

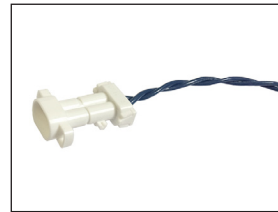
Ratings, Hardware and Warning	Page 1
Installation Instructions (Rigid Track)	Page 2-3
Installation Instructions (Serpentine Track)	Page 4-5
Installation Instructions (Adjustable Mounting Bracket)	Page 6-7

ELECTRICAL RATINGS

Low voltage system, operating from 24VDC
LED drivers.

HARDWARE PROVIDED

- (a) Power Feed Cable (PFC4X-F-24-xx)
- (b) Mounting Tracks (one or more of following)
 - Rigid Track (C4XA-RMTG-WH)
 - 20° Angle Rigid Track (C4XA-RMTG-20-WH)
 - Serpentine Track (C4XA-SMTG-WH)



a) Power Feed Cable



b) Rigid Track



b) 20° Rigid Track



b) Serpentine Track

OPTIONAL HARDWARE

- (c) 24VDC LED Power Supply
- (d) Jumper Feed Cable (JFC4X-MF-24-xx)
- (e) Adjustable Mounting Brackets
(C4XA-ADJ-WH) for use only with Rigid Track
(C4XA-RMTG-20-WH)



c) Power Supply



d) Jumper Feed Cable



e) Adj. Mounting Bracket



WARNING:

Read and understand these instructions before installing. This product must be installed in accordance with the applicable installation code by a person familiar with the construction and operation of the product and the hazards involved. Turn off main power supply before you start installing C3R.

CLiP 4X (C4X24DC)



INSTALLATION WITH RIGID TRACK & 20° RIGID TRACK

STEP 1

Measure and cut track to length:

Rigid mounting tracks ship in 6 foot sections that can be field cut to length as needed with hand saw, miter saw or circular saw with blades made for cutting composite plastics and PVC.

If going around corners, cut tracks used in corners 2" shorter than fixture run length to allow for articulating connectors to rotate.

STEP 2

Installing track with screws:

NOTE: If using Adjustable Mounting Brackets, skip Step 2 and see page 6 for mounting instructions.

Use screws designed for the surface material. It is recommended to use non-corrosive stainless or brass screws for outdoor installations. Secure mounting tracks to surface using #6 to #10 screw size Button Head or Pan Head screws every 12" to 18". Screw head height must be no greater than 1/8" (.125"). Do not use Countersunk screws or Hex Head screws as the height of the heads can interfere with fixture installation, **Figure 1**. Screws may go directly through track, or if preferred, drill pilot holes into tracks.

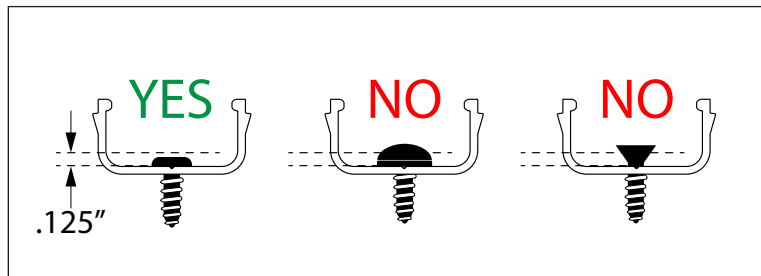


Figure 1

Installing track with adhesive:

Tempo recommends our Set & Step adhesive (part # ADH-BOND-02). If using other adhesive, make sure it is designed to bond with PVC as well as the surface material.

Run a small bead of adhesive in zig-zag pattern along bottom of tracks. Attach to surface and use tape or other method to hold tracks in place while adhesive fully cures.

CLiP 4X (C4X24DC)

INSTALLATION WITH RIGID TRACK & 20° RIGID TRACK

STEP 3

Installing fixtures into tracks:

Center bases of CLiP 4X modules with center of track and snap modules into place by firmly pressing into track.

STEP 4

Connecting fixture to fixture:

Remove blue plug from female connector and discard. Press male and female connectors firmly together making sure clips on either side of male connector firmly snap into place on the female connector to create a water tight seal.

IMPORTANT: Blue plug on last module of run must be intact to create water tight seal.

For corners, rotate the connectors as needed to make connection. Connectors can be popped out of their holders if needed to ease in making connections around corners.

STEP 5

Connecting fixtures with Jumper Feed Cable:

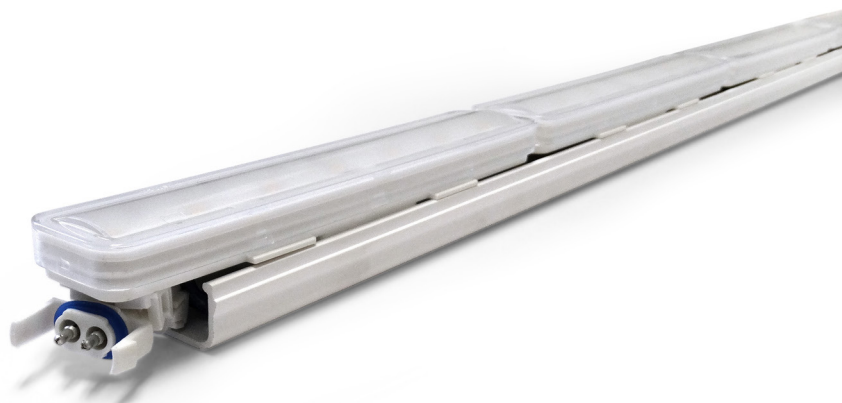
Where jumper feeds are required connect male and female connectors on Jumper Feed Cable to fixture connectors as described in Step 4.

STEP 6

Connecting Power:

Install power supply in UL approved, outdoor rated enclosure in close proximity to luminaire.

Connect the male connector on the Power Feed Cable to the female connector on fixture. Make sure clips on male connector firmly snap into place to create a water tight seal. Turn power on and check for proper operation.



CLiP 4X (C4X24DC)



INSTALLATION WITH SERPENTINE TRACK

IMPORTANT NOTE: EACH 6" TRACK LINKS TO THE NEXT WITH A BALL & JOINT. MAKE SURE THE DIRECTION OF FIRST TRACK IS FACING IN THE CORRECT DIRECTION TO ATTACH NEXT 6" TRACK.

STEP 1

Connecting Serpentine Tracks Together:

Insert "ball" end of track into "joint" of first track. Repeat for each Serpentine track as shown in photo above.

STEP 2

Installing with screws:

Use screws designed for the surface material. It is recommended to use non-corrosive stainless or brass screws for outdoor installations. Secure first track with screw going through center slot in Serpentine track using #6 to #10 screw size Button Head or Pan Head screws with head height no greater than 1/8" (.125"). Do not use Countersunk screws or Hex Head screws as the height of the heads can interfere with fixture installation, **Figure 1**.

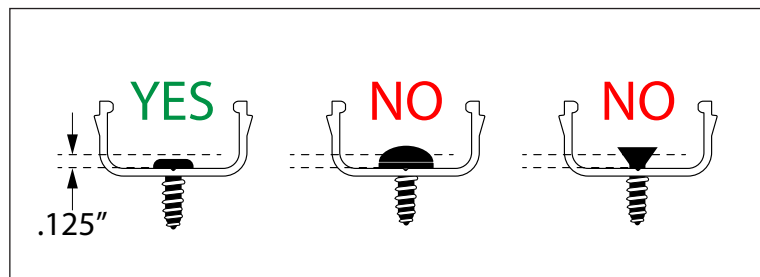


Figure 1

Installing tracks with adhesive:

Tempo recommends our Set & Step adhesive (part # ADH-BOND-02). If using other adhesive, make sure it is designed to bond with PVC as well as the surface material.

Run a small bead of adhesive in zig-zag pattern along bottom of tracks. Wipe off any excess adhesive on inside of track. Attach to surface and use tape or other method to hold tracks in place while adhesive fully cures.

STEP 3

Installing fixtures into tracks:

Pull connector off of first module and last module on each run from their holder clips. Center bases of CLiP 4X modules with center of track and snap modules into place by firmly pressing into track.

CLiP 4X (C4X24DC)

INSTALLATION WITH SERPENTINE TRACK

STEP 4

Connecting fixture to fixture:

Remove blue plug from female connector. Press male and female connectors firmly together making sure clips on either side of male connector firmly snap into place on the female connector to create a water tight seal.

Make sure blue plug on last module of run is intact to create water tight seal.

STEP 5

Connecting fixtures with Jumper Feed Cable:

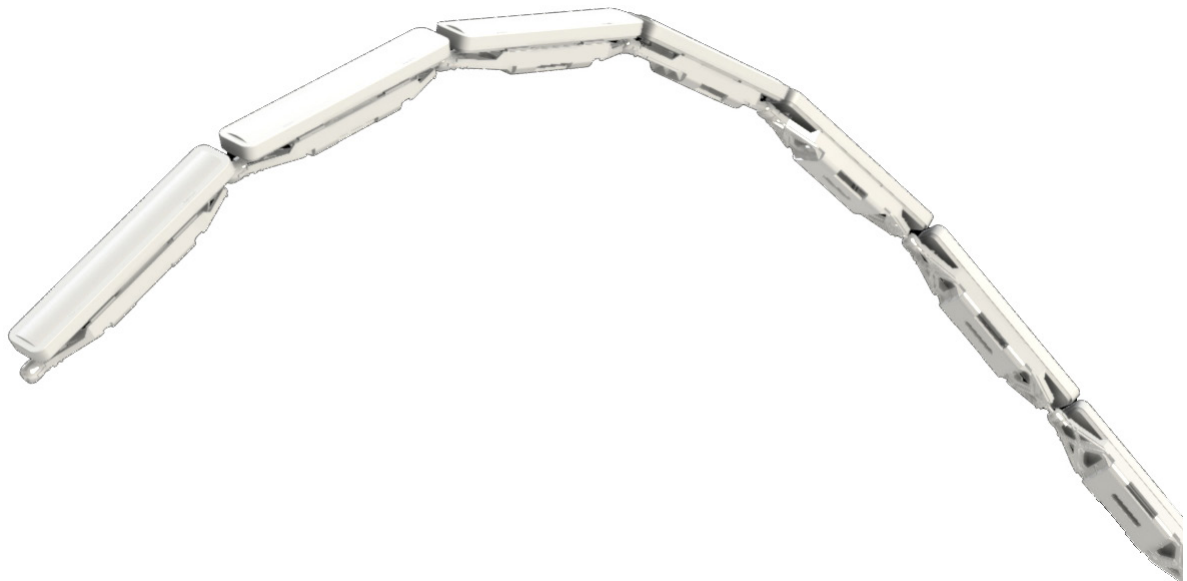
Where jumper feeds are required connect male and female connectors on Jumper Feed Cable to fixture connectors as described in Step 4.

STEP 6

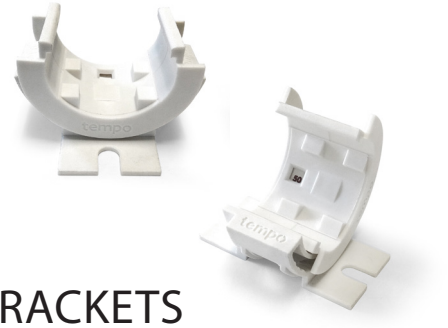
Connecting Power:

Install power supply in UL approved, outdoor rated enclosure in close proximity to luminaire.

Connect the male connector on the Power Feed Cable to the female connector on fixture. Make sure clips on male connector firmly snap into place to create a water tight seal. Turn power on and check for proper operation.



CLiP 4X (C4X24DC)



INSTALLATION WITH ADJUSTABLE MOUNTING BRACKETS

IMPORTANT NOTE: ADJUSTABLE MOUNTING BRACKETS CAN ONLY BE USED WITH STANDARD RIGID TRACK. NOT COMPATIBLE WITH 20° RIGID TRACK OR SERPENTINE TRACK.

STEP 1

Determine location of mounting brackets:

Recommended spacing of Adjustable Mounting Bracket is 15" to 18" max. Determine where brackets will be installed for even distribution.

STEP 2

Install brackets with screws (supplied by others):

Secure mounting brackets to surface using #10 screw size Button Head or Pan Head screw.

Use screws designed for the surface material. It is recommended to use non-corrosive stainless or brass screws for outdoor installations.

STEP 3

Measure and cut Rigid Track to length:

Rigid mounting tracks ship in 6 foot sections that can be field cut to length as needed with hand saw, miter saw or circular saw with blades made for cutting composite plastics and PVC.

If going around corners, cut tracks used in corners 2" shorter than fixture run length to allow for articulating connectors to rotate.

STEP 4

Installing fixtures into Rigid Mounting Track:

Center bases of CLiP 4X modules with center of track and snap modules into place by firmly pressing into track.

STEP 5

Install fixture and Rigid Mounting Track into mounting brackets:

With fixtures installed into the Rigid Mounting Track, place mounting track on top of the Adjustable Mounting Brackets. Gently push fixture assembly onto the brackets until the hooks on each side of bracket engage the lip on Rigid Mounting Track.

Rotate entire fixture as needed for precise aiming. Adjustable Mounting Bracket rotates every 10° and snaps into place, no set screws required.

CLiP 4X (C4X24DC)

STEP 6

Connecting fixture to fixture:

Remove blue plug from female connector and discard. Press male and female connectors firmly together making sure clips on either side of male connector firmly snap into place on the female connector to create a water tight seal.

Make sure blue plug on last module of run is intact to create water tight seal.

For corners, rotate the connectors as needed to make connection. Connectors can be popped out of their holders if needed to ease in making connections around corners.

STEP 7

Connecting fixtures with Jumper Feed Cable:

Where jumper feeds are required connect male and female connectors on Jumper Feed Cable to fixture connectors as described in Step 4.

STEP 8

Connecting Power:

Install power supply in UL approved, outdoor rated enclosure in close proximity to luminaire.

Connect the male connector on the Power Feed Cable to the female connector on fixture. Make sure clips on male connector firmly snap into place to create a water tight seal. Turn power on and check for proper operation.