

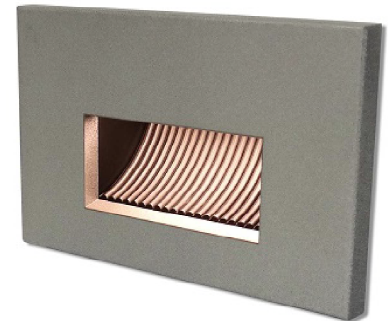
IES INDOOR REPORT
PHOTOMETRIC FILENAME : SPL-ST-1201-35WH.IES

DESCRIPTION INFORMATION (From Photometric File)

IESNA:LM-63-2002
 [TEST] 3231
 [ECN] 3194
 [TESTLAB] Tempo LLC
 [ISSUE DATE] 9/21/2017 10:00:33 AM
 [MANUFAC] Tempo LLC
 [LUMCAT] SPL-ST-1201-35WH
 [LUMINAIRE] White aluminum housing and coverplate with frosted lens
 [LAMP] Four (4) white LEDs (3500K)
 [ELECTRICALS] 119.99 VDC, 0.01 A, 0.9710 PF, 11% ATHD

CHARACTERISTICS

Lumens Per Lamp	N.A. (absolute)
Total Lamp Lumens	N.A. (absolute)
Luminaire Lumens	30
Total Luminaire Efficiency	N.A.
Luminaire Efficacy Rating (LER)	32
Total Luminaire Watts	0.95
Ballast Factor	1.00
CIE Type	Semi-Direct
Spacing Criterion (0-180)	109.72
Spacing Criterion (90-270)	N.A.
Spacing Criterion (Diagonal)	69.14
Basic Luminous Shape	Vertical Rectangle
Luminous Length (0-180)	0.00 ft
Luminous Width (90-270)	0.21 ft
Luminous Height	0.09 ft



LUMINANCE DATA (cd/sq.m)

Angle In Degrees	Average 0-Deg	Average 45-Deg	Average 90-Deg
45	0	10155	0
55	0	8024	0
65	0	6539	0
75	0	5450	0
85	0	4667	0

IES INDOOR REPORT
PHOTOMETRIC FILENAME : SPL-ST-1201-35WH.IES

CANDELA TABULATION

	<u>0</u>	<u>5</u>	<u>10</u>	<u>15</u>	<u>20</u>	<u>25</u>	<u>30</u>	<u>35</u>	<u>40</u>	<u>45</u>
0.0	0.00	0.00	0.00	0.00	0.00	0.00	0.00	0.00	0.00	0.00
2.5	0.11	0.11	0.11	0.11	0.10	0.10	0.10	0.09	0.09	0.08
5.0	0.26	0.26	0.26	0.25	0.24	0.23	0.22	0.20	0.19	0.17
7.5	0.42	0.42	0.41	0.40	0.38	0.37	0.35	0.33	0.30	0.27
10.0	0.59	0.59	0.58	0.56	0.54	0.52	0.49	0.46	0.42	0.38
12.5	1.32	1.32	1.22	1.10	0.95	0.79	0.67	0.60	0.55	0.49
15.0	2.60	2.59	2.45	2.29	2.06	1.79	1.52	1.15	0.83	0.62
17.5	4.51	4.49	4.24	3.94	3.60	3.08	2.59	2.11	1.67	1.21
20.0	6.81	6.78	6.45	6.07	5.54	4.89	4.16	3.42	2.69	2.04
22.5	8.99	8.95	8.62	8.20	7.63	6.89	6.04	5.08	4.07	3.09
25.0	10.65	10.54	10.32	9.96	9.47	8.75	7.87	6.80	5.63	4.39
27.5	11.66	11.56	11.40	11.14	10.77	10.12	9.32	8.33	7.14	5.77
30.0	12.12	12.05	11.94	11.78	11.45	10.96	10.30	9.46	8.39	7.06
32.5	12.31	12.24	12.15	12.04	11.74	11.35	10.83	10.18	9.25	8.09
35.0	12.28	12.23	12.17	12.09	11.81	11.47	11.06	10.48	9.73	8.80
37.5	12.17	12.13	12.09	12.00	11.75	11.47	11.09	10.58	9.93	9.14
40.0	12.02	11.98	11.95	11.83	11.60	11.37	10.99	10.52	9.96	9.28
42.5	11.79	11.77	11.77	11.62	11.43	11.18	10.82	10.40	9.90	9.30
45.0	11.60	11.56	11.57	11.39	11.23	10.97	10.62	10.23	9.76	9.22
47.5	11.26	11.26	11.27	11.13	10.99	10.72	10.41	10.04	9.58	9.08
50.0	11.03	11.03	10.99	10.87	10.69	10.46	10.20	9.80	9.38	8.89
52.5	10.88	10.86	10.81	10.67	10.47	10.21	9.92	9.54	9.15	8.67
55.0	10.72	10.73	10.66	10.53	10.29	10.03	9.69	9.30	8.90	8.44
57.5	10.59	10.58	10.50	10.37	10.14	9.87	9.51	9.11	8.67	8.19
60.0	10.42	10.43	10.36	10.19	10.00	9.70	9.36	8.94	8.47	7.97
62.5	10.23	10.25	10.18	10.03	9.81	9.53	9.19	8.76	8.29	7.79
65.0	10.06	10.06	9.98	9.83	9.61	9.34	9.00	8.59	8.12	7.61
67.5	9.79	9.82	9.74	9.60	9.39	9.12	8.80	8.38	7.94	7.42
70.0	9.52	9.53	9.47	9.32	9.13	8.87	8.55	8.16	7.74	7.22
72.5	9.22	9.25	9.17	9.05	8.84	8.59	8.28	7.92	7.49	7.00
75.0	8.95	8.98	8.91	8.76	8.56	8.32	8.00	7.65	7.22	6.76
77.5	8.72	8.73	8.66	8.51	8.31	8.06	7.75	7.38	6.97	6.52
80.0	8.48	8.51	8.43	8.28	8.09	7.81	7.50	7.16	6.76	6.30
82.5	8.30	8.34	8.24	8.10	7.88	7.63	7.33	6.95	6.55	6.06
85.0	8.20	8.21	8.13	7.97	7.77	7.49	7.15	6.81	6.42	5.97
87.5	8.21	8.20	8.11	7.93	7.73	7.46	7.16	6.79	6.38	5.89
90.0	8.29	8.27	8.17	8.01	7.77	7.48	7.14	6.75	6.31	5.80
92.5	8.38	8.36	8.26	8.09	7.86	7.55	7.21	6.81	6.37	5.85
95.0	8.41	8.40	8.28	8.12	7.90	7.60	7.26	6.86	6.40	5.88
97.5	8.38	8.38	8.27	8.10	7.87	7.58	7.23	6.84	6.40	5.88
100.0	8.32	8.32	8.22	8.05	7.82	7.53	7.18	6.78	6.33	5.80
102.5	8.24	8.24	8.12	7.95	7.72	7.44	7.09	6.70	6.25	5.70
105.0	8.10	8.12	8.00	7.84	7.61	7.33	6.98	6.57	6.11	5.58
107.5	7.95	7.97	7.87	7.69	7.46	7.17	6.83	6.43	5.95	5.42
110.0	7.77	7.80	7.68	7.51	7.29	7.00	6.66	6.25	5.77	5.23
112.5	7.56	7.58	7.48	7.32	7.09	6.80	6.46	6.05	5.57	5.02
115.0	7.35	7.36	7.25	7.09	6.86	6.58	6.23	5.82	5.35	4.80
117.5	7.08	7.11	7.00	6.85	6.62	6.33	5.98	5.58	5.10	4.57
120.0	6.80	6.83	6.73	6.57	6.35	6.06	5.72	5.31	4.85	4.33
122.5	6.51	6.52	6.44	6.28	6.06	5.78	5.44	5.03	4.59	4.10
125.0	6.18	6.20	6.12	5.96	5.75	5.47	5.14	4.76	4.32	3.86
127.5	5.85	5.86	5.79	5.64	5.42	5.16	4.84	4.47	4.06	3.63
130.0	5.49	5.51	5.45	5.29	5.10	4.85	4.53	4.18	3.81	3.39
132.5	5.13	5.15	5.09	4.96	4.76	4.52	4.22	3.90	3.55	3.17

IES INDOOR REPORT
PHOTOMETRIC FILENAME : SPL-ST-1201-35WH.IES

CANDELA TABULATION - (Cont.)

135.0	4.77	4.78	4.73	4.60	4.41	4.19	3.93	3.62	3.29	2.94
137.5	4.40	4.41	4.36	4.25	4.10	3.87	3.63	3.35	3.05	2.72
140.0	4.05	4.06	4.00	3.90	3.76	3.56	3.34	3.09	2.81	2.50
142.5	3.69	3.70	3.66	3.57	3.44	3.27	3.06	2.84	2.57	2.29
145.0	3.36	3.36	3.33	3.25	3.13	2.97	2.78	2.57	2.34	2.10
147.5	3.04	3.04	3.01	2.94	2.83	2.68	2.51	2.32	2.11	1.89
150.0	2.71	2.71	2.68	2.62	2.53	2.41	2.25	2.08	1.88	1.69
152.5	2.40	2.40	2.38	2.32	2.24	2.13	2.00	1.84	1.67	1.50
155.0	2.10	2.10	2.08	2.03	1.96	1.86	1.75	1.61	1.46	1.31
157.5	1.81	1.82	1.79	1.75	1.68	1.61	1.50	1.39	1.26	1.13
160.0	1.53	1.54	1.51	1.47	1.42	1.35	1.27	1.17	1.08	1.01
162.5	1.25	1.26	1.24	1.21	1.18	1.12	1.07	1.03	1.00	0.93
165.0	1.05	1.05	1.05	1.04	1.02	1.01	0.98	0.92	0.86	0.77
167.5	0.92	0.92	0.91	0.90	0.87	0.83	0.79	0.73	0.68	0.62
170.0	0.70	0.70	0.69	0.68	0.65	0.63	0.59	0.55	0.51	0.46
172.5	0.48	0.48	0.47	0.47	0.45	0.43	0.40	0.38	0.34	0.31
175.0	0.27	0.27	0.27	0.26	0.25	0.24	0.22	0.21	0.19	0.16
177.5	0.08	0.08	0.08	0.08	0.07	0.06	0.06	0.05	0.04	0.03
180.0	0.00	0.00	0.00	0.00	0.00	0.00	0.00	0.00	0.00	0.00

Vert. Angles **Horizontal Angles**

	<u>50</u>	<u>55</u>	<u>60</u>	<u>65</u>	<u>70</u>	<u>75</u>	<u>80</u>	<u>85</u>	<u>90</u>	<u>95</u>
0.0	0.00	0.00	0.00	0.00	0.00	0.00	0.00	0.00	0.00	0.00
2.5	0.07	0.06	0.05	0.04	0.03	0.02	0.02	0.00	0.00	0.00
5.0	0.15	0.13	0.11	0.09	0.07	0.05	0.03	0.00	0.00	0.00
7.5	0.24	0.21	0.18	0.15	0.11	0.08	0.05	0.00	0.00	0.00
10.0	0.34	0.29	0.25	0.20	0.16	0.11	0.06	0.02	0.00	0.00
12.5	0.44	0.38	0.32	0.26	0.20	0.14	0.08	0.03	0.00	0.00
15.0	0.55	0.47	0.40	0.33	0.25	0.18	0.10	0.04	0.00	0.00
17.5	0.77	0.58	0.49	0.39	0.31	0.22	0.13	0.05	0.00	0.00
20.0	1.45	0.87	0.57	0.46	0.36	0.25	0.16	0.06	0.00	0.00
22.5	2.21	1.48	0.81	0.54	0.41	0.29	0.18	0.07	0.00	0.00
25.0	3.19	2.15	1.33	0.67	0.47	0.33	0.20	0.08	0.00	0.00
27.5	4.35	3.01	1.89	1.02	0.53	0.37	0.23	0.09	0.00	0.00
30.0	5.56	3.99	2.56	1.45	0.64	0.42	0.25	0.10	0.00	0.00
32.5	6.65	5.05	3.34	1.91	0.90	0.45	0.27	0.11	0.00	0.00
35.0	7.53	5.95	4.16	2.48	1.24	0.51	0.30	0.13	0.00	0.00
37.5	8.12	6.75	4.96	3.17	1.59	0.61	0.33	0.13	0.00	0.00
40.0	8.47	7.26	5.66	3.75	1.98	0.78	0.36	0.14	0.00	0.00
42.5	8.57	7.60	6.23	4.37	2.42	1.00	0.38	0.15	0.00	0.00
45.0	8.58	7.79	6.57	4.83	2.85	1.24	0.41	0.17	0.00	0.00
47.5	8.48	7.75	6.69	5.17	3.25	1.48	0.46	0.18	0.00	0.00
50.0	8.34	7.64	6.70	5.38	3.62	1.76	0.52	0.19	0.00	0.00
52.5	8.15	7.49	6.63	5.48	3.88	1.97	0.64	0.20	0.00	0.00
55.0	7.93	7.32	6.51	5.44	3.98	2.17	0.73	0.21	0.00	0.00
57.5	7.70	7.12	6.36	5.34	4.02	2.34	0.86	0.22	0.00	0.00
60.0	7.48	6.88	6.15	5.21	4.01	2.50	0.94	0.24	0.00	0.00
62.5	7.25	6.64	5.94	5.04	3.93	2.51	0.98	0.25	0.00	0.00
65.0	7.05	6.40	5.73	4.87	3.82	2.48	1.01	0.26	0.00	0.00
67.5	6.85	6.22	5.51	4.69	3.69	2.42	1.02	0.27	0.00	0.00
70.0	6.65	6.02	5.29	4.46	3.52	2.33	1.03	0.29	0.00	0.00
72.5	6.44	5.81	5.08	4.26	3.37	2.26	1.03	0.30	0.00	0.00
75.0	6.22	5.61	4.89	4.09	3.24	2.19	1.02	0.31	0.00	0.00
77.5	6.00	5.39	4.69	3.91	3.08	2.09	1.01	0.32	0.00	0.00
80.0	5.77	5.17	4.48	3.72	2.92	1.99	0.99	0.33	0.00	0.00

IES INDOOR REPORT
PHOTOMETRIC FILENAME : SPL-ST-1201-35WH.IES

CANDELA TABULATION - (Cont.)

82.5	5.54	4.97	4.31	3.57	2.80	1.91	0.99	0.33	0.00	0.00
85.0	5.45	4.86	4.18	3.44	2.69	1.85	0.97	0.33	0.00	0.00
87.5	5.36	4.75	4.06	3.31	2.54	1.75	0.94	0.34	0.00	0.00
90.0	5.24	4.62	3.92	3.16	2.41	1.65	0.91	0.34	0.00	0.00
92.5	5.27	4.63	3.91	3.13	2.36	1.61	0.89	0.34	0.00	0.00
95.0	5.28	4.62	3.87	3.08	2.31	1.56	0.86	0.33	0.00	0.00
97.5	5.29	4.60	3.84	3.03	2.24	1.50	0.85	0.33	0.00	0.00
100.0	5.20	4.51	3.76	2.96	2.17	1.44	0.81	0.33	0.00	0.00
102.5	5.08	4.39	3.64	2.86	2.09	1.40	0.79	0.32	0.00	0.00
105.0	4.96	4.25	3.52	2.76	2.01	1.34	0.75	0.31	0.00	0.00
107.5	4.79	4.10	3.38	2.64	1.93	1.28	0.73	0.30	0.00	0.00
110.0	4.61	3.93	3.24	2.53	1.85	1.23	0.70	0.29	0.00	0.00
112.5	4.42	3.77	3.09	2.42	1.78	1.18	0.68	0.28	0.00	0.00
115.0	4.21	3.57	2.96	2.30	1.69	1.13	0.65	0.27	0.00	0.00
117.5	4.00	3.40	2.79	2.18	1.61	1.09	0.63	0.27	0.00	0.00
120.0	3.79	3.23	2.64	2.08	1.53	1.04	0.61	0.26	0.00	0.00
122.5	3.57	3.06	2.51	1.96	1.45	0.98	0.60	0.25	0.00	0.00
125.0	3.37	2.87	2.35	1.85	1.37	0.93	0.58	0.23	0.00	0.00
127.5	3.17	2.69	2.21	1.74	1.29	0.88	0.57	0.22	0.00	0.00
130.0	2.97	2.52	2.07	1.63	1.21	0.84	0.53	0.21	0.00	0.00
132.5	2.76	2.35	1.93	1.52	1.13	0.79	0.51	0.20	0.00	0.00
135.0	2.57	2.19	1.80	1.42	1.06	0.76	0.48	0.19	0.00	0.00
137.5	2.38	2.02	1.67	1.32	0.98	0.74	0.45	0.17	0.00	0.00
140.0	2.20	1.86	1.53	1.22	0.91	0.71	0.43	0.16	0.00	0.00
142.5	2.00	1.71	1.41	1.12	0.87	0.65	0.39	0.14	0.00	0.00
145.0	1.82	1.55	1.28	1.01	0.83	0.60	0.36	0.13	0.00	0.00
147.5	1.64	1.41	1.16	0.94	0.79	0.55	0.33	0.12	0.00	0.00
150.0	1.48	1.26	1.04	0.90	0.72	0.51	0.30	0.10	0.00	0.00
152.5	1.31	1.11	0.96	0.84	0.65	0.45	0.27	0.09	0.00	0.00
155.0	1.15	1.00	0.91	0.76	0.58	0.40	0.23	0.07	0.00	0.00
157.5	1.02	0.95	0.82	0.67	0.51	0.35	0.20	0.06	0.00	0.00
160.0	0.95	0.85	0.71	0.58	0.44	0.31	0.18	0.04	0.00	0.00
162.5	0.83	0.72	0.61	0.49	0.38	0.26	0.14	0.03	0.00	0.00
165.0	0.69	0.60	0.50	0.40	0.30	0.20	0.10	0.03	0.00	0.00
167.5	0.55	0.47	0.39	0.31	0.23	0.15	0.07	0.02	0.00	0.00
170.0	0.41	0.35	0.29	0.23	0.17	0.10	0.04	0.02	0.00	0.00
172.5	0.27	0.23	0.19	0.14	0.09	0.05	0.02	0.01	0.00	0.00
175.0	0.14	0.11	0.09	0.06	0.03	0.02	0.01	0.00	0.00	0.00
177.5	0.03	0.02	0.02	0.01	0.01	0.01	0.00	0.00	0.00	0.00
180.0	0.00	0.00	0.00	0.00	0.00	0.00	0.00	0.00	0.00	0.00

Vert. Horizontal Angles

	<u>100</u>	<u>105</u>	<u>110</u>	<u>115</u>	<u>120</u>	<u>125</u>	<u>130</u>	<u>135</u>	<u>140</u>	<u>145</u>
0.0	0.00	0.00	0.00	0.00	0.00	0.00	0.00	0.00	0.00	0.00
2.5	0.00	0.00	0.00	0.00	0.00	0.00	0.00	0.00	0.00	0.00
5.0	0.00	0.00	0.00	0.00	0.00	0.00	0.00	0.00	0.00	0.00
7.5	0.00	0.00	0.00	0.00	0.00	0.00	0.00	0.00	0.00	0.00
10.0	0.00	0.00	0.00	0.00	0.00	0.00	0.00	0.00	0.00	0.00
12.5	0.00	0.00	0.00	0.00	0.00	0.00	0.00	0.00	0.00	0.00
15.0	0.00	0.00	0.00	0.00	0.00	0.00	0.00	0.00	0.00	0.00
17.5	0.00	0.00	0.00	0.00	0.00	0.00	0.00	0.00	0.00	0.00
20.0	0.00	0.00	0.00	0.00	0.00	0.00	0.00	0.00	0.00	0.00
22.5	0.00	0.00	0.00	0.00	0.00	0.00	0.00	0.00	0.00	0.00
25.0	0.00	0.00	0.00	0.00	0.00	0.00	0.00	0.00	0.00	0.00
27.5	0.00	0.00	0.00	0.00	0.00	0.00	0.00	0.00	0.00	0.00

IES INDOOR REPORT
PHOTOMETRIC FILENAME : SPL-ST-1201-35WH.IES

CANDELA TABULATION - (Cont.)

30.0	0.00	0.00	0.00	0.00	0.00	0.00	0.00	0.00	0.00	0.00
32.5	0.00	0.00	0.00	0.00	0.00	0.00	0.00	0.00	0.00	0.00
35.0	0.00	0.00	0.00	0.00	0.00	0.00	0.00	0.00	0.00	0.00
37.5	0.00	0.00	0.00	0.00	0.00	0.00	0.00	0.00	0.00	0.00
40.0	0.00	0.00	0.00	0.00	0.00	0.00	0.00	0.00	0.00	0.00
42.5	0.00	0.00	0.00	0.00	0.00	0.00	0.00	0.00	0.00	0.00
45.0	0.00	0.00	0.00	0.00	0.00	0.00	0.00	0.00	0.00	0.00
47.5	0.00	0.00	0.00	0.00	0.00	0.00	0.00	0.00	0.00	0.00
50.0	0.00	0.00	0.00	0.00	0.00	0.00	0.00	0.00	0.00	0.00
52.5	0.00	0.00	0.00	0.00	0.00	0.00	0.00	0.00	0.00	0.00
55.0	0.00	0.00	0.00	0.00	0.00	0.00	0.00	0.00	0.00	0.00
57.5	0.00	0.00	0.00	0.00	0.00	0.00	0.00	0.00	0.00	0.00
60.0	0.00	0.00	0.00	0.00	0.00	0.00	0.00	0.00	0.00	0.00
62.5	0.00	0.00	0.00	0.00	0.00	0.00	0.00	0.00	0.00	0.00
65.0	0.00	0.00	0.00	0.00	0.00	0.00	0.00	0.00	0.00	0.00
67.5	0.00	0.00	0.00	0.00	0.00	0.00	0.00	0.00	0.00	0.00
70.0	0.00	0.00	0.00	0.00	0.00	0.00	0.00	0.00	0.00	0.00
72.5	0.00	0.00	0.00	0.00	0.00	0.00	0.00	0.00	0.00	0.00
75.0	0.00	0.00	0.00	0.00	0.00	0.00	0.00	0.00	0.00	0.00
77.5	0.00	0.00	0.00	0.00	0.00	0.00	0.00	0.00	0.00	0.00
80.0	0.00	0.00	0.00	0.00	0.00	0.00	0.00	0.00	0.00	0.00
82.5	0.00	0.00	0.00	0.00	0.00	0.00	0.00	0.00	0.00	0.00
85.0	0.00	0.00	0.00	0.00	0.00	0.00	0.00	0.00	0.00	0.00
87.5	0.00	0.00	0.00	0.00	0.00	0.00	0.00	0.00	0.00	0.00
90.0	0.00	0.00	0.00	0.00	0.00	0.00	0.00	0.00	0.00	0.00
92.5	0.00	0.00	0.00	0.00	0.00	0.00	0.00	0.00	0.00	0.00
95.0	0.00	0.00	0.00	0.00	0.00	0.00	0.00	0.00	0.00	0.00
97.5	0.00	0.00	0.00	0.00	0.00	0.00	0.00	0.00	0.00	0.00
100.0	0.00	0.00	0.00	0.00	0.00	0.00	0.00	0.00	0.00	0.00
102.5	0.00	0.00	0.00	0.00	0.00	0.00	0.00	0.00	0.00	0.00
105.0	0.00	0.00	0.00	0.00	0.00	0.00	0.00	0.00	0.00	0.00
107.5	0.00	0.00	0.00	0.00	0.00	0.00	0.00	0.00	0.00	0.00
110.0	0.00	0.00	0.00	0.00	0.00	0.00	0.00	0.00	0.00	0.00
112.5	0.00	0.00	0.00	0.00	0.00	0.00	0.00	0.00	0.00	0.00
115.0	0.00	0.00	0.00	0.00	0.00	0.00	0.00	0.00	0.00	0.00
117.5	0.00	0.00	0.00	0.00	0.00	0.00	0.00	0.00	0.00	0.00
120.0	0.00	0.00	0.00	0.00	0.00	0.00	0.00	0.00	0.00	0.00
122.5	0.00	0.00	0.00	0.00	0.00	0.00	0.00	0.00	0.00	0.00
125.0	0.00	0.00	0.00	0.00	0.00	0.00	0.00	0.00	0.00	0.00
127.5	0.00	0.00	0.00	0.00	0.00	0.00	0.00	0.00	0.00	0.00
130.0	0.00	0.00	0.00	0.00	0.00	0.00	0.00	0.00	0.00	0.00
132.5	0.00	0.00	0.00	0.00	0.00	0.00	0.00	0.00	0.00	0.00
135.0	0.00	0.00	0.00	0.00	0.00	0.00	0.00	0.00	0.00	0.00
137.5	0.00	0.00	0.00	0.00	0.00	0.00	0.00	0.00	0.00	0.00
140.0	0.00	0.00	0.00	0.00	0.00	0.00	0.00	0.00	0.00	0.00
142.5	0.00	0.00	0.00	0.00	0.00	0.00	0.00	0.00	0.00	0.00
145.0	0.00	0.00	0.00	0.00	0.00	0.00	0.00	0.00	0.00	0.00
147.5	0.00	0.00	0.00	0.00	0.00	0.00	0.00	0.00	0.00	0.00
150.0	0.00	0.00	0.00	0.00	0.00	0.00	0.00	0.00	0.00	0.00
152.5	0.00	0.00	0.00	0.00	0.00	0.00	0.00	0.00	0.00	0.00
155.0	0.00	0.00	0.00	0.00	0.00	0.00	0.00	0.00	0.00	0.00
157.5	0.00	0.00	0.00	0.00	0.00	0.00	0.00	0.00	0.00	0.00
160.0	0.00	0.00	0.00	0.00	0.00	0.00	0.00	0.00	0.00	0.00
162.5	0.00	0.00	0.00	0.00	0.00	0.00	0.00	0.00	0.00	0.00
165.0	0.00	0.00	0.00	0.00	0.00	0.00	0.00	0.00	0.00	0.00
167.5	0.00	0.00	0.00	0.00	0.00	0.00	0.00	0.00	0.00	0.00

IES INDOOR REPORT
PHOTOMETRIC FILENAME : SPL-ST-1201-35WH.IES

CANDELA TABULATION - (Cont.)

170.0	0.00	0.00	0.00	0.00	0.00	0.00	0.00	0.00	0.00	0.00
172.5	0.00	0.00	0.00	0.00	0.00	0.00	0.00	0.00	0.00	0.00
175.0	0.00	0.00	0.00	0.00	0.00	0.00	0.00	0.00	0.00	0.00
177.5	0.00	0.00	0.00	0.00	0.00	0.00	0.00	0.00	0.00	0.00
180.0	0.00	0.00	0.00	0.00	0.00	0.00	0.00	0.00	0.00	0.00

Vert. Angles **Horizontal Angles**

	<u>150</u>	<u>155</u>	<u>160</u>	<u>165</u>	<u>170</u>	<u>175</u>	<u>180</u>
0.0	0.00	0.00	0.00	0.00	0.00	0.00	0.00
2.5	0.00	0.00	0.00	0.00	0.00	0.00	0.00
5.0	0.00	0.00	0.00	0.00	0.00	0.00	0.00
7.5	0.00	0.00	0.00	0.00	0.00	0.00	0.00
10.0	0.00	0.00	0.00	0.00	0.00	0.00	0.00
12.5	0.00	0.00	0.00	0.00	0.00	0.00	0.00
15.0	0.00	0.00	0.00	0.00	0.00	0.00	0.00
17.5	0.00	0.00	0.00	0.00	0.00	0.00	0.00
20.0	0.00	0.00	0.00	0.00	0.00	0.00	0.00
22.5	0.00	0.00	0.00	0.00	0.00	0.00	0.00
25.0	0.00	0.00	0.00	0.00	0.00	0.00	0.00
27.5	0.00	0.00	0.00	0.00	0.00	0.00	0.00
30.0	0.00	0.00	0.00	0.00	0.00	0.00	0.00
32.5	0.00	0.00	0.00	0.00	0.00	0.00	0.00
35.0	0.00	0.00	0.00	0.00	0.00	0.00	0.00
37.5	0.00	0.00	0.00	0.00	0.00	0.00	0.00
40.0	0.00	0.00	0.00	0.00	0.00	0.00	0.00
42.5	0.00	0.00	0.00	0.00	0.00	0.00	0.00
45.0	0.00	0.00	0.00	0.00	0.00	0.00	0.00
47.5	0.00	0.00	0.00	0.00	0.00	0.00	0.00
50.0	0.00	0.00	0.00	0.00	0.00	0.00	0.00
52.5	0.00	0.00	0.00	0.00	0.00	0.00	0.00
55.0	0.00	0.00	0.00	0.00	0.00	0.00	0.00
57.5	0.00	0.00	0.00	0.00	0.00	0.00	0.00
60.0	0.00	0.00	0.00	0.00	0.00	0.00	0.00
62.5	0.00	0.00	0.00	0.00	0.00	0.00	0.00
65.0	0.00	0.00	0.00	0.00	0.00	0.00	0.00
67.5	0.00	0.00	0.00	0.00	0.00	0.00	0.00
70.0	0.00	0.00	0.00	0.00	0.00	0.00	0.00
72.5	0.00	0.00	0.00	0.00	0.00	0.00	0.00
75.0	0.00	0.00	0.00	0.00	0.00	0.00	0.00
77.5	0.00	0.00	0.00	0.00	0.00	0.00	0.00
80.0	0.00	0.00	0.00	0.00	0.00	0.00	0.00
82.5	0.00	0.00	0.00	0.00	0.00	0.00	0.00
85.0	0.00	0.00	0.00	0.00	0.00	0.00	0.00
87.5	0.00	0.00	0.00	0.00	0.00	0.00	0.00
90.0	0.00	0.00	0.00	0.00	0.00	0.00	0.00
92.5	0.00	0.00	0.00	0.00	0.00	0.00	0.00
95.0	0.00	0.00	0.00	0.00	0.00	0.00	0.00
97.5	0.00	0.00	0.00	0.00	0.00	0.00	0.00
100.0	0.00	0.00	0.00	0.00	0.00	0.00	0.00
102.5	0.00	0.00	0.00	0.00	0.00	0.00	0.00
105.0	0.00	0.00	0.00	0.00	0.00	0.00	0.00
107.5	0.00	0.00	0.00	0.00	0.00	0.00	0.00
110.0	0.00	0.00	0.00	0.00	0.00	0.00	0.00
112.5	0.00	0.00	0.00	0.00	0.00	0.00	0.00
115.0	0.00	0.00	0.00	0.00	0.00	0.00	0.00

IES INDOOR REPORT
PHOTOMETRIC FILENAME : SPL-ST-1201-35WH.IES

CANDELA TABULATION - (Cont.)

117.5	0.00	0.00	0.00	0.00	0.00	0.00	0.00
120.0	0.00	0.00	0.00	0.00	0.00	0.00	0.00
122.5	0.00	0.00	0.00	0.00	0.00	0.00	0.00
125.0	0.00	0.00	0.00	0.00	0.00	0.00	0.00
127.5	0.00	0.00	0.00	0.00	0.00	0.00	0.00
130.0	0.00	0.00	0.00	0.00	0.00	0.00	0.00
132.5	0.00	0.00	0.00	0.00	0.00	0.00	0.00
135.0	0.00	0.00	0.00	0.00	0.00	0.00	0.00
137.5	0.00	0.00	0.00	0.00	0.00	0.00	0.00
140.0	0.00	0.00	0.00	0.00	0.00	0.00	0.00
142.5	0.00	0.00	0.00	0.00	0.00	0.00	0.00
145.0	0.00	0.00	0.00	0.00	0.00	0.00	0.00
147.5	0.00	0.00	0.00	0.00	0.00	0.00	0.00
150.0	0.00	0.00	0.00	0.00	0.00	0.00	0.00
152.5	0.00	0.00	0.00	0.00	0.00	0.00	0.00
155.0	0.00	0.00	0.00	0.00	0.00	0.00	0.00
157.5	0.00	0.00	0.00	0.00	0.00	0.00	0.00
160.0	0.00	0.00	0.00	0.00	0.00	0.00	0.00
162.5	0.00	0.00	0.00	0.00	0.00	0.00	0.00
165.0	0.00	0.00	0.00	0.00	0.00	0.00	0.00
167.5	0.00	0.00	0.00	0.00	0.00	0.00	0.00
170.0	0.00	0.00	0.00	0.00	0.00	0.00	0.00
172.5	0.00	0.00	0.00	0.00	0.00	0.00	0.00
175.0	0.00	0.00	0.00	0.00	0.00	0.00	0.00
177.5	0.00	0.00	0.00	0.00	0.00	0.00	0.00
180.0	0.00	0.00	0.00	0.00	0.00	0.00	0.00

IES INDOOR REPORT
PHOTOMETRIC FILENAME : SPL-ST-1201-35WH.IES

ZONAL LUMEN SUMMARY

Zone	Lumens	%Lamp	%Fixt
0-20	0.20	N.A.	0.70
0-30	1.33	N.A.	4.40
0-40	3.54	N.A.	11.80
0-60	9.62	N.A.	32.00
0-80	15.98	N.A.	53.20
0-90	18.84	N.A.	62.70
10-90	18.83	N.A.	62.70
20-40	3.34	N.A.	11.10
20-50	6.22	N.A.	20.70
40-70	9.34	N.A.	31.10
60-80	6.36	N.A.	21.20
70-80	3.09	N.A.	10.30
80-90	2.86	N.A.	9.50
90-110	5.38	N.A.	17.90
90-120	7.53	N.A.	25.10
90-130	9.13	N.A.	30.40
90-150	10.81	N.A.	36.00
90-180	11.22	N.A.	37.30
110-180	5.83	N.A.	19.40
0-180	30.05	N.A.	100.00

Total Luminaire Efficiency = N.A.%

ZONAL LUMEN SUMMARY

Zone	Lumens
0-10	0.01
10-20	0.19
20-30	1.12
30-40	2.22
40-50	2.88
50-60	3.19
60-70	3.27
70-80	3.09
80-90	2.86
90-100	2.80
100-110	2.58
110-120	2.14
120-130	1.60
130-140	1.07
140-150	0.62
150-160	0.29
160-170	0.10
170-180	0.01

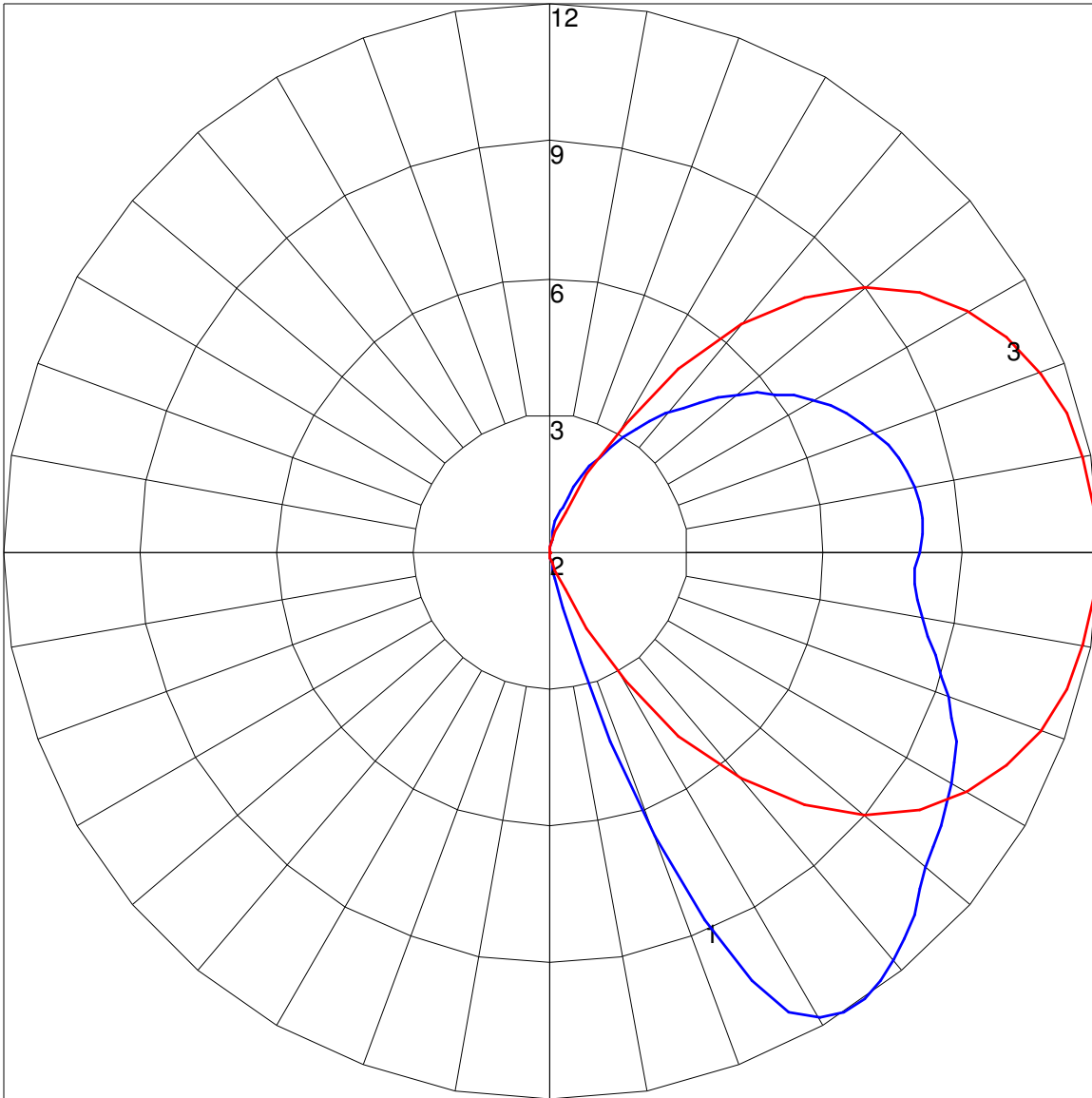
IES INDOOR REPORT
PHOTOMETRIC FILENAME : SPL-ST-1201-35WH.IES

COEFFICIENTS OF UTILIZATION - ZONAL CAVITY METHOD

Effective Floor Cavity Reflectance 0.20

RC	80				70				50			30			10			0
RW	70	50	30	10	70	50	30	10	50	30	10	50	30	10	50	30	10	0
0	110	110	110	110	103	103	103	103	91	91	91	79	79	79	68	68	68	63
1	96	89	83	78	89	83	78	73	72	68	64	62	58	55	52	50	47	43
2	85	75	66	59	79	70	62	56	60	54	49	51	46	42	43	39	36	31
3	76	64	54	47	70	59	51	44	51	44	38	43	38	33	36	32	28	24
4	69	55	45	38	63	51	42	35	44	37	31	37	31	26	31	26	22	19
5	62	48	38	31	57	45	36	29	38	31	25	32	26	22	27	22	18	15
6	57	43	33	26	52	40	31	24	34	27	21	29	23	18	24	19	15	12
7	52	38	29	22	48	35	27	21	30	23	18	26	20	15	21	16	13	10
8	48	34	25	19	44	32	23	18	27	20	15	23	17	13	19	14	11	8
9	45	31	22	16	41	29	21	15	25	18	13	21	15	11	17	13	9	7
10	41	28	20	14	38	26	18	13	22	16	11	19	14	10	16	11	8	6

POLAR GRAPH



Maximum Candela = 12.31 Located At Horizontal Angle = 0, Vertical Angle = 32.5

1 - Vertical Plane Through Horizontal Angles (0 - 180) (Through Max. Cd.)

2 - Vertical Plane Through Horizontal Angles (90 - 270)

3 - Horizontal Cone Through Vertical Angle (32.5) (Through Max. Cd.)