

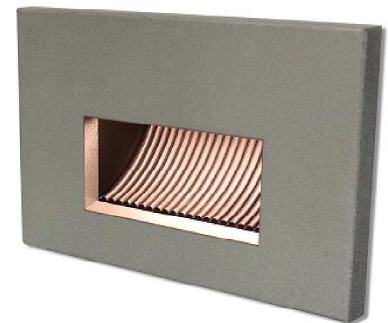
IES INDOOR REPORT
PHOTOMETRIC FILENAME : SPL-FT-1203-35WH.IES

DESCRIPTION INFORMATION (From Photometric File)

IESNA:LM-63-2002
 [TEST] 3234
 [ECN] 3194
 [TESTLAB] Tempo LLC
 [ISSUE DATE] 9/22/2017 9:00:26 AM
 [MANUFAC] Tempo LLC
 [LUMCAT] SPL-FT-1203-35WH
 [LUMINAIRE] White aluminum housing and coverplate with frosted lens
 [LAMP] Four (4) white LEDs (3500K), forward throw
 [ELECTRICALS] 120.08 VDC, 0.02 A, 0.9763 PF, 12% ATHD

CHARACTERISTICS

Lumens Per Lamp	N.A. (absolute)
Total Lamp Lumens	N.A. (absolute)
Luminaire Lumens	86
Total Luminaire Efficiency	N.A.
Luminaire Efficacy Rating (LER)	32
Total Luminaire Watts	2.73
Ballast Factor	1.00
CIE Type	Semi-Direct
Spacing Criterion (0-180)	172.50
Spacing Criterion (90-270)	N.A.
Spacing Criterion (Diagonal)	102.85
Basic Luminous Shape	Vertical Rectangle
Luminous Length (0-180)	0.00 ft
Luminous Width (90-270)	0.21 ft
Luminous Height	0.09 ft



LUMINANCE DATA (cd/sq.m)

Angle In Degrees	Average 0-Deg	Average 45-Deg	Average 90-Deg
45	0	15023	0
55	0	24985	0
65	0	24052	0
75	0	20568	0
85	0	16612	0

IES INDOOR REPORT
PHOTOMETRIC FILENAME : SPL-FT-1203-35WH.IES

CANDELA TABULATION

	<u>0</u>	<u>5</u>	<u>10</u>	<u>15</u>	<u>20</u>	<u>25</u>	<u>30</u>	<u>35</u>	<u>40</u>	<u>45</u>
0.0	0.00	0.00	0.00	0.00	0.00	0.00	0.00	0.00	0.00	0.00
2.5	0.20	0.20	0.20	0.20	0.18	0.17	0.15	0.14	0.13	0.11
5.0	0.54	0.54	0.54	0.51	0.50	0.47	0.44	0.41	0.37	0.33
7.5	0.91	0.91	0.89	0.87	0.83	0.79	0.74	0.69	0.63	0.57
10.0	1.31	1.31	1.28	1.25	1.20	1.14	1.08	1.00	0.92	0.82
12.5	1.93	1.93	1.85	1.76	1.65	1.54	1.43	1.33	1.21	1.09
15.0	2.86	2.85	2.75	2.64	2.47	2.29	2.07	1.80	1.56	1.38
17.5	3.89	3.88	3.75	3.60	3.42	3.13	2.84	2.52	2.19	1.83
20.0	5.07	5.05	4.88	4.68	4.40	4.08	3.71	3.32	2.90	2.47
22.5	6.40	6.37	6.15	5.88	5.53	5.12	4.69	4.20	3.69	3.15
25.0	7.89	7.79	7.57	7.23	6.79	6.30	5.78	5.16	4.53	3.88
27.5	9.64	9.52	9.22	8.80	8.22	7.63	6.95	6.21	5.44	4.65
30.0	11.72	11.57	11.20	10.62	9.93	9.20	8.30	7.38	6.44	5.51
32.5	14.29	14.09	13.64	12.81	11.95	10.97	9.87	8.69	7.57	6.45
35.0	17.69	17.40	16.65	15.56	14.44	13.12	11.69	10.28	8.86	7.53
37.5	23.00	22.52	21.23	19.57	17.81	15.85	13.93	12.23	10.34	8.64
40.0	31.71	30.99	28.85	26.11	23.06	19.74	17.02	14.42	12.07	9.96
42.5	40.82	40.18	38.30	35.04	31.24	26.09	21.77	17.57	14.23	11.61
45.0	45.25	44.77	43.67	41.19	37.86	33.29	28.20	22.34	17.57	13.64
47.5	47.18	46.89	46.23	44.14	41.34	37.79	33.57	28.26	22.23	16.59
50.0	48.51	48.19	47.32	45.36	42.68	39.49	36.31	32.35	27.23	20.41
52.5	49.37	49.09	48.20	46.48	43.63	40.38	37.45	34.27	30.69	24.07
55.0	49.71	49.47	48.61	47.07	44.16	41.09	38.27	35.41	31.62	26.28
57.5	49.64	49.50	48.65	47.05	44.36	41.44	38.83	35.88	32.06	27.34
60.0	49.32	49.23	48.40	46.79	44.31	41.49	38.87	36.03	32.44	27.85
62.5	48.77	48.70	47.91	46.32	43.97	41.22	38.67	35.98	32.52	28.08
65.0	47.94	47.91	47.19	45.69	43.34	40.76	38.31	35.70	32.19	27.99
67.5	46.90	46.84	46.13	44.75	42.55	40.09	37.77	35.05	31.68	27.62
70.0	45.55	45.50	44.88	43.52	41.47	39.17	36.85	34.31	31.06	27.09
72.5	44.07	44.08	43.45	42.18	40.15	37.96	35.80	33.36	30.15	26.44
75.0	42.51	42.57	41.90	40.63	38.74	36.65	34.58	32.13	29.03	25.51
77.5	40.89	40.99	40.35	39.11	37.29	35.27	33.23	30.83	27.91	24.55
80.0	39.18	39.30	38.67	37.50	35.77	33.83	31.84	29.52	26.69	23.51
82.5	37.41	37.54	36.94	35.81	34.16	32.35	30.38	28.15	25.44	22.37
85.0	35.53	35.68	35.11	34.04	32.50	30.75	28.87	26.70	24.08	21.25
87.5	33.42	33.70	33.10	32.12	30.67	29.01	27.22	25.17	22.72	20.10
90.0	31.60	31.52	30.95	30.00	28.69	27.17	25.44	23.51	21.22	18.83
92.5	30.22	30.40	29.72	28.86	27.52	25.94	24.24	22.31	20.14	17.86
95.0	28.31	28.64	28.07	27.17	26.04	24.57	22.87	21.00	18.94	16.80
97.5	26.41	26.69	26.21	25.39	24.28	22.97	21.44	19.72	17.84	15.76
100.0	24.69	24.94	24.49	23.73	22.70	21.46	19.96	18.44	16.74	14.89
102.5	23.17	23.36	22.93	22.20	21.28	20.13	18.81	17.25	15.69	14.02
105.0	21.80	21.95	21.55	20.94	20.02	18.93	17.69	16.32	14.80	13.19
107.5	20.53	20.68	20.31	19.66	18.87	17.88	16.70	15.39	14.05	12.57
110.0	19.37	19.54	19.15	18.57	17.81	16.85	15.82	14.57	13.26	11.89
112.5	18.30	18.39	18.08	17.53	16.82	15.96	14.92	13.83	12.59	11.24
115.0	17.28	17.35	17.06	16.55	15.91	15.10	14.16	13.11	11.95	10.68
117.5	16.31	16.38	16.12	15.67	15.05	14.28	13.43	12.41	11.30	10.13
120.0	15.39	15.46	15.21	14.79	14.22	13.52	12.69	11.76	10.70	9.57
122.5	14.50	14.58	14.37	13.96	13.45	12.78	12.01	11.09	10.12	9.06
125.0	13.69	13.72	13.55	13.16	12.67	12.06	11.32	10.47	9.54	8.56
127.5	12.87	12.91	12.74	12.39	11.93	11.32	10.63	9.85	8.99	8.06
130.0	12.06	12.09	11.96	11.63	11.18	10.64	9.96	9.24	8.46	7.55
132.5	11.28	11.30	11.16	10.90	10.45	9.97	9.32	8.64	7.90	7.10

IES INDOOR REPORT
PHOTOMETRIC FILENAME : SPL-FT-1203-35WH.IES

CANDELA TABULATION - (Cont.)

135.0	10.51	10.52	10.40	10.14	9.74	9.27	8.70	8.05	7.36	6.60
137.5	9.75	9.75	9.64	9.40	9.07	8.60	8.08	7.49	6.83	6.12
140.0	8.98	9.00	8.89	8.68	8.36	7.95	7.48	6.92	6.31	5.66
142.5	8.25	8.26	8.17	7.97	7.67	7.31	6.86	6.38	5.80	5.20
145.0	7.52	7.53	7.44	7.27	7.01	6.67	6.26	5.81	5.30	4.79
147.5	6.81	6.82	6.75	6.59	6.35	6.05	5.68	5.26	4.81	4.33
150.0	6.11	6.11	6.04	5.92	5.72	5.45	5.12	4.75	4.34	3.89
152.5	5.44	5.44	5.38	5.27	5.09	4.85	4.56	4.23	3.86	3.47
155.0	4.80	4.80	4.74	4.64	4.48	4.27	4.03	3.72	3.39	3.05
157.5	4.16	4.19	4.11	4.01	3.88	3.70	3.48	3.22	2.94	2.65
160.0	3.52	3.54	3.48	3.40	3.28	3.14	2.95	2.74	2.54	2.39
162.5	2.92	2.94	2.89	2.82	2.75	2.62	2.51	2.42	2.34	2.24
165.0	2.48	2.49	2.46	2.44	2.41	2.38	2.33	2.24	2.10	1.91
167.5	2.26	2.26	2.23	2.19	2.13	2.05	1.95	1.83	1.69	1.54
170.0	1.75	1.76	1.73	1.68	1.63	1.57	1.49	1.40	1.29	1.17
172.5	1.23	1.24	1.22	1.19	1.15	1.11	1.05	0.98	0.90	0.82
175.0	0.74	0.74	0.75	0.71	0.69	0.66	0.62	0.57	0.52	0.47
177.5	0.25	0.25	0.25	0.25	0.23	0.21	0.20	0.18	0.17	0.13
180.0	0.00	0.00	0.00	0.00	0.00	0.00	0.00	0.00	0.00	0.00

Vert. Angles **Horizontal Angles**

	<u>50</u>	<u>55</u>	<u>60</u>	<u>65</u>	<u>70</u>	<u>75</u>	<u>80</u>	<u>85</u>	<u>90</u>	<u>95</u>
0.0	0.00	0.00	0.00	0.00	0.00	0.00	0.00	0.00	0.00	0.00
2.5	0.09	0.08	0.06	0.04	0.03	0.03	0.02	0.00	0.00	0.00
5.0	0.28	0.24	0.19	0.14	0.10	0.06	0.03	0.00	0.00	0.00
7.5	0.50	0.43	0.35	0.27	0.19	0.12	0.05	0.02	0.00	0.00
10.0	0.74	0.62	0.52	0.41	0.31	0.19	0.09	0.03	0.00	0.00
12.5	0.96	0.83	0.69	0.55	0.41	0.27	0.14	0.03	0.00	0.00
15.0	1.22	1.05	0.89	0.70	0.53	0.36	0.19	0.05	0.00	0.00
17.5	1.51	1.29	1.07	0.86	0.67	0.45	0.24	0.06	0.00	0.00
20.0	2.02	1.57	1.27	1.03	0.78	0.53	0.32	0.09	0.00	0.00
22.5	2.59	2.04	1.52	1.19	0.91	0.63	0.36	0.11	0.00	0.00
25.0	3.21	2.55	1.92	1.37	1.04	0.72	0.42	0.13	0.00	0.00
27.5	3.88	3.10	2.36	1.65	1.17	0.82	0.47	0.15	0.00	0.00
30.0	4.59	3.68	2.82	2.00	1.32	0.92	0.53	0.18	0.00	0.00
32.5	5.34	4.31	3.29	2.36	1.52	1.01	0.59	0.21	0.00	0.00
35.0	6.17	4.94	3.79	2.74	1.80	1.11	0.65	0.24	0.00	0.00
37.5	7.07	5.67	4.34	3.18	2.08	1.22	0.71	0.26	0.00	0.00
40.0	8.17	6.41	4.90	3.55	2.37	1.37	0.79	0.29	0.00	0.00
42.5	9.26	7.24	5.49	3.98	2.66	1.56	0.83	0.31	0.00	0.00
45.0	10.60	8.20	6.14	4.42	2.97	1.75	0.90	0.34	0.00	0.00
47.5	12.18	9.25	6.85	4.90	3.28	1.94	0.96	0.36	0.00	0.00
50.0	14.69	10.63	7.64	5.39	3.59	2.16	1.04	0.39	0.00	0.00
52.5	17.70	12.38	8.51	5.91	3.92	2.34	1.15	0.43	0.00	0.00
55.0	20.65	14.60	9.62	6.50	4.25	2.53	1.24	0.45	0.00	0.00
57.5	22.87	16.78	11.10	7.17	4.60	2.72	1.36	0.48	0.00	0.00
60.0	23.52	18.14	12.49	7.97	4.94	2.93	1.43	0.51	0.00	0.00
62.5	23.90	19.13	13.89	8.79	5.28	3.09	1.52	0.55	0.00	0.00
65.0	24.06	19.69	14.63	9.31	5.58	3.25	1.60	0.57	0.00	0.00
67.5	23.95	19.63	14.77	9.76	5.91	3.40	1.68	0.60	0.00	0.00
70.0	23.47	19.40	14.84	10.06	6.13	3.55	1.75	0.64	0.00	0.00
72.5	22.93	19.03	14.81	10.23	6.32	3.67	1.82	0.67	0.00	0.00
75.0	22.27	18.51	14.47	10.20	6.43	3.78	1.89	0.69	0.00	0.00
77.5	21.44	17.87	14.07	10.08	6.50	3.86	1.94	0.72	0.00	0.00
80.0	20.53	17.12	13.60	9.87	6.53	3.94	1.99	0.77	0.00	0.00

IES INDOOR REPORT
PHOTOMETRIC FILENAME : SPL-FT-1203-35WH.IES

CANDELA TABULATION - (Cont.)

82.5	19.56	16.32	13.08	9.61	6.47	3.94	2.05	0.78	0.00	0.00
85.0	18.60	15.57	12.54	9.30	6.39	3.94	2.05	0.78	0.00	0.00
87.5	17.62	14.78	11.98	8.97	6.21	3.89	2.05	0.79	0.00	0.00
90.0	16.53	13.90	11.34	8.57	6.03	3.83	2.05	0.80	0.00	0.00
92.5	15.65	13.21	10.78	8.23	5.85	3.75	2.03	0.81	0.00	0.00
95.0	14.69	12.44	10.17	7.83	5.66	3.67	2.01	0.81	0.00	0.00
97.5	13.72	11.67	9.55	7.43	5.41	3.55	1.99	0.82	0.00	0.00
100.0	13.00	11.03	9.03	7.06	5.18	3.44	1.93	0.82	0.00	0.00
102.5	12.27	10.44	8.58	6.74	4.96	3.32	1.87	0.79	0.00	0.00
105.0	11.53	9.85	8.13	6.40	4.74	3.19	1.82	0.77	0.00	0.00
107.5	10.95	9.32	7.67	6.07	4.51	3.05	1.76	0.75	0.00	0.00
110.0	10.41	8.88	7.32	5.79	4.31	2.92	1.70	0.73	0.00	0.00
112.5	9.89	8.43	6.97	5.54	4.14	2.81	1.65	0.71	0.00	0.00
115.0	9.36	7.99	6.64	5.26	3.93	2.68	1.59	0.70	0.00	0.00
117.5	8.89	7.60	6.28	4.99	3.74	2.56	1.53	0.70	0.00	0.00
120.0	8.42	7.20	5.97	4.76	3.55	2.46	1.47	0.67	0.00	0.00
122.5	7.94	6.83	5.67	4.50	3.38	2.33	1.45	0.64	0.00	0.00
125.0	7.51	6.42	5.33	4.24	3.20	2.21	1.41	0.61	0.00	0.00
127.5	7.08	6.06	5.02	4.00	3.02	2.08	1.39	0.59	0.00	0.00
130.0	6.64	5.70	4.73	3.78	2.85	1.99	1.33	0.56	0.00	0.00
132.5	6.21	5.33	4.43	3.54	2.67	1.88	1.27	0.52	0.00	0.00
135.0	5.80	4.99	4.14	3.31	2.50	1.82	1.21	0.50	0.00	0.00
137.5	5.39	4.62	3.85	3.07	2.33	1.78	1.14	0.47	0.00	0.00
140.0	5.01	4.28	3.56	2.85	2.17	1.72	1.10	0.44	0.00	0.00
142.5	4.58	3.95	3.28	2.63	2.07	1.63	1.00	0.40	0.00	0.00
145.0	4.19	3.59	2.99	2.40	2.00	1.51	0.93	0.37	0.00	0.00
147.5	3.80	3.27	2.70	2.21	1.92	1.40	0.86	0.33	0.00	0.00
150.0	3.42	2.93	2.46	2.14	1.78	1.29	0.79	0.30	0.00	0.00
152.5	3.05	2.62	2.28	2.04	1.62	1.16	0.71	0.26	0.00	0.00
155.0	2.68	2.37	2.19	1.87	1.46	1.04	0.63	0.23	0.00	0.00
157.5	2.40	2.26	2.03	1.67	1.30	0.92	0.55	0.21	0.00	0.00
160.0	2.28	2.07	1.78	1.46	1.13	0.80	0.49	0.16	0.00	0.00
162.5	2.04	1.80	1.52	1.25	0.98	0.69	0.39	0.12	0.00	0.00
165.0	1.71	1.50	1.28	1.04	0.80	0.55	0.31	0.09	0.00	0.00
167.5	1.38	1.21	1.02	0.83	0.63	0.43	0.23	0.06	0.00	0.00
170.0	1.07	0.91	0.77	0.62	0.49	0.31	0.15	0.05	0.00	0.00
172.5	0.73	0.63	0.52	0.41	0.30	0.19	0.08	0.03	0.00	0.00
175.0	0.41	0.34	0.27	0.20	0.13	0.07	0.04	0.02	0.00	0.00
177.5	0.11	0.09	0.06	0.04	0.03	0.02	0.01	0.00	0.00	0.00
180.0	0.00	0.00	0.00	0.00	0.00	0.00	0.00	0.00	0.00	0.00

Vert. Horizontal Angles

	<u>100</u>	<u>105</u>	<u>110</u>	<u>115</u>	<u>120</u>	<u>125</u>	<u>130</u>	<u>135</u>	<u>140</u>	<u>145</u>
0.0	0.00	0.00	0.00	0.00	0.00	0.00	0.00	0.00	0.00	0.00
2.5	0.00	0.00	0.00	0.00	0.00	0.00	0.00	0.00	0.00	0.00
5.0	0.00	0.00	0.00	0.00	0.00	0.00	0.00	0.00	0.00	0.00
7.5	0.00	0.00	0.00	0.00	0.00	0.00	0.00	0.00	0.00	0.00
10.0	0.00	0.00	0.00	0.00	0.00	0.00	0.00	0.00	0.00	0.00
12.5	0.00	0.00	0.00	0.00	0.00	0.00	0.00	0.00	0.00	0.00
15.0	0.00	0.00	0.00	0.00	0.00	0.00	0.00	0.00	0.00	0.00
17.5	0.00	0.00	0.00	0.00	0.00	0.00	0.00	0.00	0.00	0.00
20.0	0.00	0.00	0.00	0.00	0.00	0.00	0.00	0.00	0.00	0.00
22.5	0.00	0.00	0.00	0.00	0.00	0.00	0.00	0.00	0.00	0.00
25.0	0.00	0.00	0.00	0.00	0.00	0.00	0.00	0.00	0.00	0.00
27.5	0.00	0.00	0.00	0.00	0.00	0.00	0.00	0.00	0.00	0.00

IES INDOOR REPORT
PHOTOMETRIC FILENAME : SPL-FT-1203-35WH.IES

CANDELA TABULATION - (Cont.)

30.0	0.00	0.00	0.00	0.00	0.00	0.00	0.00	0.00	0.00	0.00
32.5	0.00	0.00	0.00	0.00	0.00	0.00	0.00	0.00	0.00	0.00
35.0	0.00	0.00	0.00	0.00	0.00	0.00	0.00	0.00	0.00	0.00
37.5	0.00	0.00	0.00	0.00	0.00	0.00	0.00	0.00	0.00	0.00
40.0	0.00	0.00	0.00	0.00	0.00	0.00	0.00	0.00	0.00	0.00
42.5	0.00	0.00	0.00	0.00	0.00	0.00	0.00	0.00	0.00	0.00
45.0	0.00	0.00	0.00	0.00	0.00	0.00	0.00	0.00	0.00	0.00
47.5	0.00	0.00	0.00	0.00	0.00	0.00	0.00	0.00	0.00	0.00
50.0	0.00	0.00	0.00	0.00	0.00	0.00	0.00	0.00	0.00	0.00
52.5	0.00	0.00	0.00	0.00	0.00	0.00	0.00	0.00	0.00	0.00
55.0	0.00	0.00	0.00	0.00	0.00	0.00	0.00	0.00	0.00	0.00
57.5	0.00	0.00	0.00	0.00	0.00	0.00	0.00	0.00	0.00	0.00
60.0	0.00	0.00	0.00	0.00	0.00	0.00	0.00	0.00	0.00	0.00
62.5	0.00	0.00	0.00	0.00	0.00	0.00	0.00	0.00	0.00	0.00
65.0	0.00	0.00	0.00	0.00	0.00	0.00	0.00	0.00	0.00	0.00
67.5	0.00	0.00	0.00	0.00	0.00	0.00	0.00	0.00	0.00	0.00
70.0	0.00	0.00	0.00	0.00	0.00	0.00	0.00	0.00	0.00	0.00
72.5	0.00	0.00	0.00	0.00	0.00	0.00	0.00	0.00	0.00	0.00
75.0	0.00	0.00	0.00	0.00	0.00	0.00	0.00	0.00	0.00	0.00
77.5	0.00	0.00	0.00	0.00	0.00	0.00	0.00	0.00	0.00	0.00
80.0	0.00	0.00	0.00	0.00	0.00	0.00	0.00	0.00	0.00	0.00
82.5	0.00	0.00	0.00	0.00	0.00	0.00	0.00	0.00	0.00	0.00
85.0	0.00	0.00	0.00	0.00	0.00	0.00	0.00	0.00	0.00	0.00
87.5	0.00	0.00	0.00	0.00	0.00	0.00	0.00	0.00	0.00	0.00
90.0	0.00	0.00	0.00	0.00	0.00	0.00	0.00	0.00	0.00	0.00
92.5	0.00	0.00	0.00	0.00	0.00	0.00	0.00	0.00	0.00	0.00
95.0	0.00	0.00	0.00	0.00	0.00	0.00	0.00	0.00	0.00	0.00
97.5	0.00	0.00	0.00	0.00	0.00	0.00	0.00	0.00	0.00	0.00
100.0	0.00	0.00	0.00	0.00	0.00	0.00	0.00	0.00	0.00	0.00
102.5	0.00	0.00	0.00	0.00	0.00	0.00	0.00	0.00	0.00	0.00
105.0	0.00	0.00	0.00	0.00	0.00	0.00	0.00	0.00	0.00	0.00
107.5	0.00	0.00	0.00	0.00	0.00	0.00	0.00	0.00	0.00	0.00
110.0	0.00	0.00	0.00	0.00	0.00	0.00	0.00	0.00	0.00	0.00
112.5	0.00	0.00	0.00	0.00	0.00	0.00	0.00	0.00	0.00	0.00
115.0	0.00	0.00	0.00	0.00	0.00	0.00	0.00	0.00	0.00	0.00
117.5	0.00	0.00	0.00	0.00	0.00	0.00	0.00	0.00	0.00	0.00
120.0	0.00	0.00	0.00	0.00	0.00	0.00	0.00	0.00	0.00	0.00
122.5	0.00	0.00	0.00	0.00	0.00	0.00	0.00	0.00	0.00	0.00
125.0	0.00	0.00	0.00	0.00	0.00	0.00	0.00	0.00	0.00	0.00
127.5	0.00	0.00	0.00	0.00	0.00	0.00	0.00	0.00	0.00	0.00
130.0	0.00	0.00	0.00	0.00	0.00	0.00	0.00	0.00	0.00	0.00
132.5	0.00	0.00	0.00	0.00	0.00	0.00	0.00	0.00	0.00	0.00
135.0	0.00	0.00	0.00	0.00	0.00	0.00	0.00	0.00	0.00	0.00
137.5	0.00	0.00	0.00	0.00	0.00	0.00	0.00	0.00	0.00	0.00
140.0	0.00	0.00	0.00	0.00	0.00	0.00	0.00	0.00	0.00	0.00
142.5	0.00	0.00	0.00	0.00	0.00	0.00	0.00	0.00	0.00	0.00
145.0	0.00	0.00	0.00	0.00	0.00	0.00	0.00	0.00	0.00	0.00
147.5	0.00	0.00	0.00	0.00	0.00	0.00	0.00	0.00	0.00	0.00
150.0	0.00	0.00	0.00	0.00	0.00	0.00	0.00	0.00	0.00	0.00
152.5	0.00	0.00	0.00	0.00	0.00	0.00	0.00	0.00	0.00	0.00
155.0	0.00	0.00	0.00	0.00	0.00	0.00	0.00	0.00	0.00	0.00
157.5	0.00	0.00	0.00	0.00	0.00	0.00	0.00	0.00	0.00	0.00
160.0	0.00	0.00	0.00	0.00	0.00	0.00	0.00	0.00	0.00	0.00
162.5	0.00	0.00	0.00	0.00	0.00	0.00	0.00	0.00	0.00	0.00
165.0	0.00	0.00	0.00	0.00	0.00	0.00	0.00	0.00	0.00	0.00
167.5	0.00	0.00	0.00	0.00	0.00	0.00	0.00	0.00	0.00	0.00

IES INDOOR REPORT
PHOTOMETRIC FILENAME : SPL-FT-1203-35WH.IES

CANDELA TABULATION - (Cont.)

170.0	0.00	0.00	0.00	0.00	0.00	0.00	0.00	0.00	0.00	0.00
172.5	0.00	0.00	0.00	0.00	0.00	0.00	0.00	0.00	0.00	0.00
175.0	0.00	0.00	0.00	0.00	0.00	0.00	0.00	0.00	0.00	0.00
177.5	0.00	0.00	0.00	0.00	0.00	0.00	0.00	0.00	0.00	0.00
180.0	0.00	0.00	0.00	0.00	0.00	0.00	0.00	0.00	0.00	0.00

Vert. Angles **Horizontal Angles**

	<u>150</u>	<u>155</u>	<u>160</u>	<u>165</u>	<u>170</u>	<u>175</u>	<u>180</u>
0.0	0.00	0.00	0.00	0.00	0.00	0.00	0.00
2.5	0.00	0.00	0.00	0.00	0.00	0.00	0.00
5.0	0.00	0.00	0.00	0.00	0.00	0.00	0.00
7.5	0.00	0.00	0.00	0.00	0.00	0.00	0.00
10.0	0.00	0.00	0.00	0.00	0.00	0.00	0.00
12.5	0.00	0.00	0.00	0.00	0.00	0.00	0.00
15.0	0.00	0.00	0.00	0.00	0.00	0.00	0.00
17.5	0.00	0.00	0.00	0.00	0.00	0.00	0.00
20.0	0.00	0.00	0.00	0.00	0.00	0.00	0.00
22.5	0.00	0.00	0.00	0.00	0.00	0.00	0.00
25.0	0.00	0.00	0.00	0.00	0.00	0.00	0.00
27.5	0.00	0.00	0.00	0.00	0.00	0.00	0.00
30.0	0.00	0.00	0.00	0.00	0.00	0.00	0.00
32.5	0.00	0.00	0.00	0.00	0.00	0.00	0.00
35.0	0.00	0.00	0.00	0.00	0.00	0.00	0.00
37.5	0.00	0.00	0.00	0.00	0.00	0.00	0.00
40.0	0.00	0.00	0.00	0.00	0.00	0.00	0.00
42.5	0.00	0.00	0.00	0.00	0.00	0.00	0.00
45.0	0.00	0.00	0.00	0.00	0.00	0.00	0.00
47.5	0.00	0.00	0.00	0.00	0.00	0.00	0.00
50.0	0.00	0.00	0.00	0.00	0.00	0.00	0.00
52.5	0.00	0.00	0.00	0.00	0.00	0.00	0.00
55.0	0.00	0.00	0.00	0.00	0.00	0.00	0.00
57.5	0.00	0.00	0.00	0.00	0.00	0.00	0.00
60.0	0.00	0.00	0.00	0.00	0.00	0.00	0.00
62.5	0.00	0.00	0.00	0.00	0.00	0.00	0.00
65.0	0.00	0.00	0.00	0.00	0.00	0.00	0.00
67.5	0.00	0.00	0.00	0.00	0.00	0.00	0.00
70.0	0.00	0.00	0.00	0.00	0.00	0.00	0.00
72.5	0.00	0.00	0.00	0.00	0.00	0.00	0.00
75.0	0.00	0.00	0.00	0.00	0.00	0.00	0.00
77.5	0.00	0.00	0.00	0.00	0.00	0.00	0.00
80.0	0.00	0.00	0.00	0.00	0.00	0.00	0.00
82.5	0.00	0.00	0.00	0.00	0.00	0.00	0.00
85.0	0.00	0.00	0.00	0.00	0.00	0.00	0.00
87.5	0.00	0.00	0.00	0.00	0.00	0.00	0.00
90.0	0.00	0.00	0.00	0.00	0.00	0.00	0.00
92.5	0.00	0.00	0.00	0.00	0.00	0.00	0.00
95.0	0.00	0.00	0.00	0.00	0.00	0.00	0.00
97.5	0.00	0.00	0.00	0.00	0.00	0.00	0.00
100.0	0.00	0.00	0.00	0.00	0.00	0.00	0.00
102.5	0.00	0.00	0.00	0.00	0.00	0.00	0.00
105.0	0.00	0.00	0.00	0.00	0.00	0.00	0.00
107.5	0.00	0.00	0.00	0.00	0.00	0.00	0.00
110.0	0.00	0.00	0.00	0.00	0.00	0.00	0.00
112.5	0.00	0.00	0.00	0.00	0.00	0.00	0.00
115.0	0.00	0.00	0.00	0.00	0.00	0.00	0.00

IES INDOOR REPORT
PHOTOMETRIC FILENAME : SPL-FT-1203-35WH.IES

CANDELA TABULATION - (Cont.)

117.5	0.00	0.00	0.00	0.00	0.00	0.00	0.00
120.0	0.00	0.00	0.00	0.00	0.00	0.00	0.00
122.5	0.00	0.00	0.00	0.00	0.00	0.00	0.00
125.0	0.00	0.00	0.00	0.00	0.00	0.00	0.00
127.5	0.00	0.00	0.00	0.00	0.00	0.00	0.00
130.0	0.00	0.00	0.00	0.00	0.00	0.00	0.00
132.5	0.00	0.00	0.00	0.00	0.00	0.00	0.00
135.0	0.00	0.00	0.00	0.00	0.00	0.00	0.00
137.5	0.00	0.00	0.00	0.00	0.00	0.00	0.00
140.0	0.00	0.00	0.00	0.00	0.00	0.00	0.00
142.5	0.00	0.00	0.00	0.00	0.00	0.00	0.00
145.0	0.00	0.00	0.00	0.00	0.00	0.00	0.00
147.5	0.00	0.00	0.00	0.00	0.00	0.00	0.00
150.0	0.00	0.00	0.00	0.00	0.00	0.00	0.00
152.5	0.00	0.00	0.00	0.00	0.00	0.00	0.00
155.0	0.00	0.00	0.00	0.00	0.00	0.00	0.00
157.5	0.00	0.00	0.00	0.00	0.00	0.00	0.00
160.0	0.00	0.00	0.00	0.00	0.00	0.00	0.00
162.5	0.00	0.00	0.00	0.00	0.00	0.00	0.00
165.0	0.00	0.00	0.00	0.00	0.00	0.00	0.00
167.5	0.00	0.00	0.00	0.00	0.00	0.00	0.00
170.0	0.00	0.00	0.00	0.00	0.00	0.00	0.00
172.5	0.00	0.00	0.00	0.00	0.00	0.00	0.00
175.0	0.00	0.00	0.00	0.00	0.00	0.00	0.00
177.5	0.00	0.00	0.00	0.00	0.00	0.00	0.00
180.0	0.00	0.00	0.00	0.00	0.00	0.00	0.00

IES INDOOR REPORT
PHOTOMETRIC FILENAME : SPL-FT-1203-35WH.IES

ZONAL LUMEN SUMMARY

Zone	Lumens	%Lamp	%Fixt
0-20	0.25	N.A.	0.30
0-30	1.19	N.A.	1.40
0-40	3.89	N.A.	4.50
0-60	22.12	N.A.	25.60
0-80	47.12	N.A.	54.60
0-90	57.87	N.A.	67.00
10-90	57.85	N.A.	67.00
20-40	3.64	N.A.	4.20
20-50	10.83	N.A.	12.50
40-70	30.88	N.A.	35.80
60-80	25.00	N.A.	29.00
70-80	12.35	N.A.	14.30
80-90	10.75	N.A.	12.50
90-110	15.21	N.A.	17.60
90-120	20.16	N.A.	23.40
90-130	23.73	N.A.	27.50
90-150	27.52	N.A.	31.90
90-180	28.47	N.A.	33.00
110-180	13.25	N.A.	15.30
0-180	86.34	N.A.	100.00

Total Luminaire Efficiency = N.A.%

ZONAL LUMEN SUMMARY

Zone	Lumens
0-10	0.02
10-20	0.23
20-30	0.94
30-40	2.70
40-50	7.19
50-60	11.04
60-70	12.65
70-80	12.35
80-90	10.75
90-100	8.63
100-110	6.58
110-120	4.94
120-130	3.57
130-140	2.38
140-150	1.41
150-160	0.68
160-170	0.24
170-180	0.03

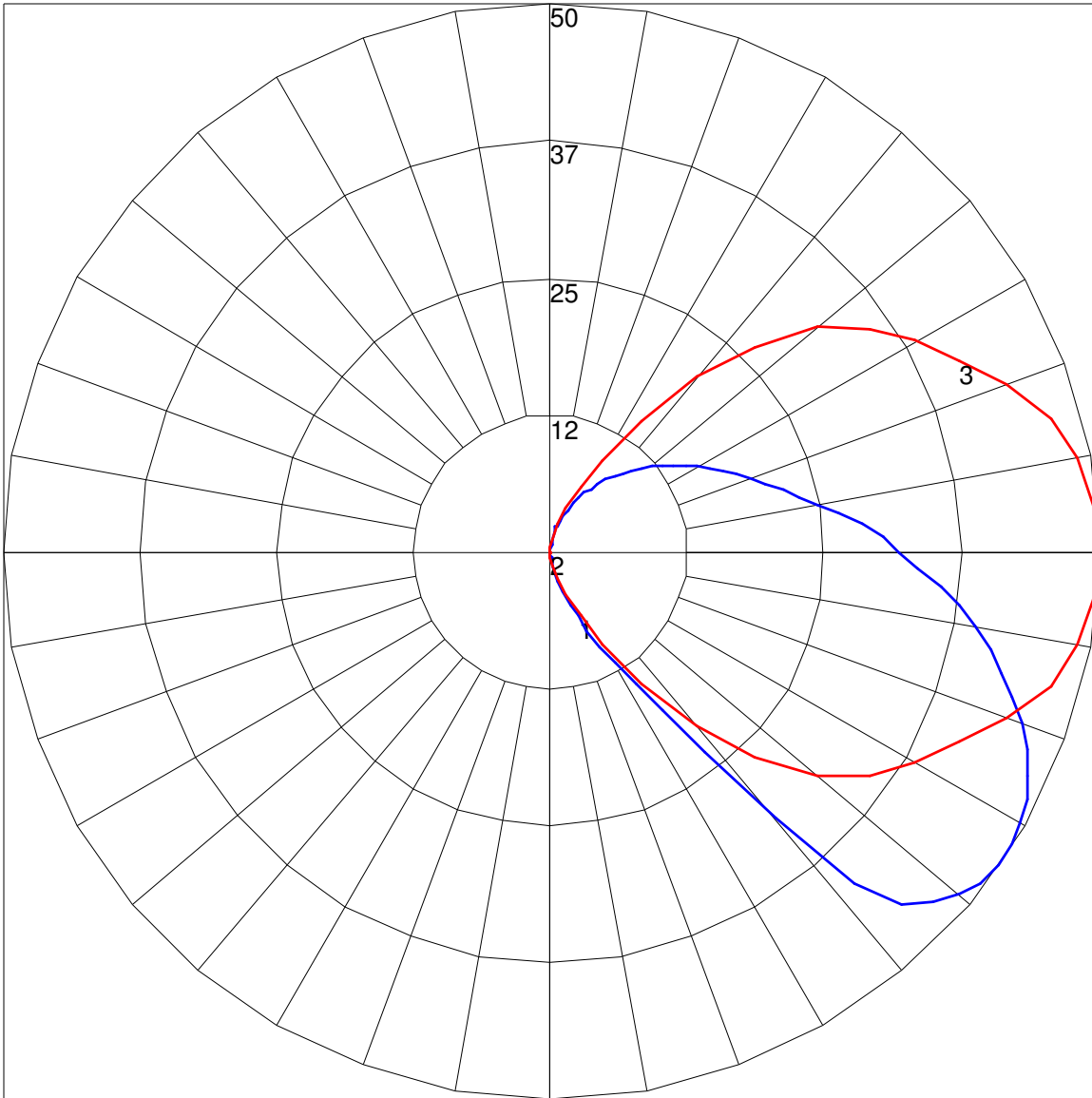
IES INDOOR REPORT
PHOTOMETRIC FILENAME : SPL-FT-1203-35WH.IES

COEFFICIENTS OF UTILIZATION - ZONAL CAVITY METHOD

Effective Floor Cavity Reflectance 0.20

RC	80				70				50			30			10			0
RW	70	50	30	10	70	50	30	10	50	30	10	50	30	10	50	30	10	0
0	112	112	112	112	105	105	105	105	93	93	93	82	82	82	72	72	72	67
1	95	87	81	74	88	82	76	70	71	66	62	61	57	54	52	49	47	42
2	83	72	62	54	77	67	58	51	57	51	45	49	43	39	41	37	33	28
3	74	60	49	41	68	56	46	38	48	40	33	40	34	29	34	28	24	20
4	66	51	40	32	61	47	38	30	41	32	26	34	27	22	28	23	18	15
5	60	44	34	26	55	41	31	24	35	27	21	29	23	17	24	19	14	11
6	54	39	28	21	50	36	26	20	31	23	17	26	19	14	21	16	11	8
7	50	34	24	17	46	32	23	16	27	19	14	23	16	11	19	13	9	6
8	46	31	21	15	42	29	20	14	24	17	12	21	14	10	17	12	8	5
9	42	28	19	13	39	26	17	12	22	15	10	19	12	8	15	10	6	4
10	39	25	17	11	36	23	15	10	20	13	8	17	11	7	14	9	5	3

POLAR GRAPH



Maximum Candela = 49.71 Located At Horizontal Angle = 0, Vertical Angle = 55

1 - Vertical Plane Through Horizontal Angles (0 - 180) (Through Max. Cd.)

2 - Vertical Plane Through Horizontal Angles (90 - 270)

3 - Horizontal Cone Through Vertical Angle (55) (Through Max. Cd.)