

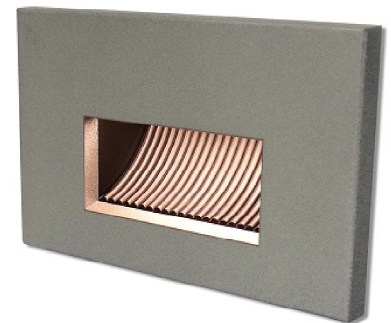
IES INDOOR REPORT
PHOTOMETRIC FILENAME : SPL-FT-1201-35WH.IES

DESCRIPTION INFORMATION (From Photometric File)

IESNA:LM-63-2002
 [TEST] 3233
 [ECN] 3194
 [TESTLAB] Tempo LLC
 [ISSUEDATE] 9/21/2017 3:48:12 PM
 [MANUFAC] Tempo LLC
 [LUMCAT] SPL-FT-1201-35WH
 [LUMINAIRE] White aluminum housing and coverplate with frosted lens
 [LAMP] Four (4) white LEDs (3500K), forward throw
 [ELECTRICALS] 120.00 VDC, 0.01 A, 0.9707 PF, 21% ATHD

CHARACTERISTICS

Lumens Per Lamp	N.A. (absolute)
Total Lamp Lumens	N.A. (absolute)
Luminaire Lumens	31
Total Luminaire Efficiency	N.A.
Luminaire Efficacy Rating (LER)	33
Total Luminaire Watts	0.94
Ballast Factor	1.00
CIE Type	Semi-Direct
Spacing Criterion (0-180)	122.28
Spacing Criterion (90-270)	N.A.
Spacing Criterion (Diagonal)	73.24
Basic Luminous Shape	Vertical Rectangle
Luminous Length (0-180)	0.00 ft
Luminous Width (90-270)	0.21 ft
Luminous Height	0.09 ft



LUMINANCE DATA (cd/sq.m)

Angle In Degrees	Average 0-Deg	Average 45-Deg	Average 90-Deg
45	0	5551	0
55	0	9193	0
65	0	8756	0
75	0	7426	0
85	0	5973	0

IES INDOOR REPORT
PHOTOMETRIC FILENAME : SPL-FT-1201-35WH.IES

CANDELA TABULATION

	<u>0</u>	<u>5</u>	<u>10</u>	<u>15</u>	<u>20</u>	<u>25</u>	<u>30</u>	<u>35</u>	<u>40</u>	<u>45</u>
0.0	0.00	0.00	0.00	0.00	0.00	0.00	0.00	0.00	0.00	0.00
2.5	0.08	0.08	0.08	0.08	0.07	0.07	0.07	0.06	0.06	0.05
5.0	0.21	0.21	0.21	0.20	0.19	0.18	0.17	0.16	0.15	0.13
7.5	0.34	0.34	0.33	0.32	0.31	0.30	0.28	0.26	0.24	0.22
10.0	0.48	0.48	0.47	0.46	0.45	0.43	0.41	0.38	0.35	0.31
12.5	0.72	0.72	0.70	0.66	0.62	0.58	0.53	0.49	0.45	0.41
15.0	1.07	1.07	1.03	0.98	0.92	0.86	0.78	0.67	0.59	0.51
17.5	1.45	1.45	1.40	1.34	1.28	1.17	1.06	0.94	0.82	0.69
20.0	1.87	1.87	1.81	1.74	1.63	1.51	1.38	1.24	1.08	0.92
22.5	2.35	2.35	2.27	2.17	2.05	1.90	1.74	1.56	1.37	1.17
25.0	2.90	2.87	2.79	2.67	2.51	2.33	2.14	1.92	1.68	1.44
27.5	3.54	3.50	3.39	3.24	3.03	2.82	2.56	2.30	2.02	1.73
30.0	4.30	4.25	4.11	3.91	3.66	3.39	3.06	2.73	2.38	2.04
32.5	5.24	5.17	5.01	4.71	4.40	4.04	3.64	3.21	2.80	2.38
35.0	6.49	6.39	6.12	5.73	5.32	4.83	4.30	3.79	3.27	2.78
37.5	8.46	8.29	7.82	7.20	6.56	5.84	5.14	4.51	3.82	3.19
40.0	11.65	11.41	10.64	9.63	8.51	7.28	6.28	5.32	4.45	3.68
42.5	14.95	14.73	14.08	12.90	11.53	9.64	8.04	6.50	5.26	4.28
45.0	16.58	16.41	16.00	15.10	13.88	12.26	10.42	8.26	6.50	5.04
47.5	17.23	17.13	16.91	16.17	15.17	13.85	12.34	10.42	8.22	6.15
50.0	17.71	17.58	17.27	16.57	15.61	14.46	13.32	11.88	10.03	7.57
52.5	17.95	17.88	17.57	16.95	15.91	14.76	13.68	12.56	11.28	8.89
55.0	18.04	17.98	17.70	17.16	16.09	14.96	13.97	12.95	11.58	9.67
57.5	18.04	17.98	17.68	17.10	16.14	15.08	14.14	13.09	11.73	10.04
60.0	17.87	17.87	17.59	17.00	16.09	15.08	14.13	13.11	11.84	10.20
62.5	17.67	17.63	17.37	16.80	15.95	14.96	14.03	13.07	11.86	10.25
65.0	17.30	17.34	17.09	16.54	15.71	14.77	13.88	12.95	11.71	10.19
67.5	16.87	16.89	16.65	16.17	15.38	14.49	13.66	12.72	11.50	10.04
70.0	16.39	16.37	16.14	15.68	14.94	14.11	13.32	12.41	11.25	9.82
72.5	15.80	15.84	15.61	15.17	14.43	13.65	12.91	12.04	10.91	9.57
75.0	15.24	15.26	15.03	14.57	13.90	13.16	12.43	11.57	10.48	9.21
77.5	14.61	14.69	14.44	14.00	13.34	12.65	11.93	11.09	10.05	8.86
80.0	13.97	14.04	13.82	13.40	12.80	12.12	11.41	10.61	9.60	8.48
82.5	13.34	13.38	13.17	12.78	12.20	11.56	10.87	10.10	9.15	8.07
85.0	12.62	12.70	12.50	12.12	11.60	10.97	10.32	9.56	8.64	7.64
87.5	11.84	11.96	11.76	11.43	10.92	10.32	9.70	8.99	8.14	7.21
90.0	11.18	11.17	10.96	10.63	10.18	9.64	9.05	8.38	7.58	6.74
92.5	10.67	10.76	10.53	10.22	9.75	9.20	8.61	7.95	7.19	6.39
95.0	10.02	10.13	9.94	9.61	9.22	8.70	8.13	7.48	6.75	6.00
97.5	9.32	9.43	9.26	8.99	8.60	8.14	7.62	7.02	6.36	5.62
100.0	8.72	8.82	8.66	8.40	8.05	7.62	7.09	6.57	5.97	5.32
102.5	8.18	8.26	8.11	7.86	7.56	7.15	6.69	6.15	5.60	5.02
105.0	7.71	7.77	7.64	7.43	7.10	6.74	6.29	5.82	5.29	4.72
107.5	7.29	7.33	7.20	6.97	6.70	6.36	5.94	5.49	5.02	4.50
110.0	6.86	6.93	6.79	6.60	6.34	5.99	5.64	5.20	4.74	4.26
112.5	6.49	6.53	6.43	6.24	5.98	5.69	5.32	4.95	4.51	4.03
115.0	6.13	6.17	6.06	5.89	5.67	5.39	5.05	4.69	4.28	3.83
117.5	5.79	5.83	5.74	5.59	5.37	5.10	4.80	4.43	4.05	3.63
120.0	5.48	5.51	5.43	5.28	5.07	4.83	4.53	4.21	3.84	3.43
122.5	5.17	5.20	5.13	4.99	4.81	4.57	4.30	3.98	3.63	3.25
125.0	4.87	4.90	4.84	4.71	4.53	4.31	4.05	3.75	3.43	3.08
127.5	4.59	4.61	4.56	4.42	4.26	4.06	3.81	3.53	3.23	2.89
130.0	4.30	4.32	4.27	4.16	4.00	3.81	3.58	3.32	3.03	2.72
132.5	4.04	4.04	4.00	3.91	3.74	3.57	3.35	3.10	2.83	2.56

IES INDOOR REPORT
PHOTOMETRIC FILENAME : SPL-FT-1201-35WH.IES

CANDELA TABULATION - (Cont.)

135.0	3.75	3.76	3.73	3.63	3.50	3.32	3.12	2.89	2.65	2.37
137.5	3.48	3.49	3.45	3.37	3.25	3.08	2.89	2.69	2.45	2.20
140.0	3.22	3.22	3.18	3.11	2.99	2.84	2.68	2.48	2.26	2.04
142.5	2.95	2.96	2.93	2.85	2.75	2.62	2.46	2.29	2.09	1.87
145.0	2.70	2.70	2.67	2.61	2.51	2.39	2.25	2.08	1.90	1.72
147.5	2.44	2.44	2.42	2.36	2.28	2.17	2.04	1.89	1.73	1.56
150.0	2.19	2.19	2.17	2.12	2.05	1.96	1.84	1.70	1.56	1.40
152.5	1.95	1.95	1.93	1.89	1.83	1.74	1.64	1.52	1.39	1.25
155.0	1.72	1.72	1.70	1.66	1.61	1.53	1.44	1.34	1.22	1.10
157.5	1.49	1.50	1.48	1.44	1.39	1.33	1.25	1.16	1.06	0.95
160.0	1.27	1.28	1.25	1.23	1.18	1.13	1.07	0.99	0.91	0.84
162.5	1.05	1.06	1.04	1.02	0.99	0.94	0.90	0.85	0.83	0.79
165.0	0.87	0.88	0.87	0.86	0.85	0.84	0.82	0.79	0.75	0.67
167.5	0.79	0.79	0.78	0.77	0.75	0.72	0.69	0.65	0.60	0.54
170.0	0.62	0.62	0.61	0.60	0.58	0.55	0.53	0.49	0.46	0.41
172.5	0.43	0.43	0.43	0.42	0.40	0.39	0.37	0.34	0.32	0.29
175.0	0.25	0.25	0.25	0.24	0.24	0.23	0.21	0.20	0.18	0.16
177.5	0.08	0.08	0.08	0.08	0.07	0.07	0.06	0.06	0.05	0.04
180.0	0.00	0.00	0.00	0.00	0.00	0.00	0.00	0.00	0.00	0.00

Vert. Angles **Horizontal Angles**

	<u>50</u>	<u>55</u>	<u>60</u>	<u>65</u>	<u>70</u>	<u>75</u>	<u>80</u>	<u>85</u>	<u>90</u>	<u>95</u>
0.0	0.00	0.00	0.00	0.00	0.00	0.00	0.00	0.00	0.00	0.00
2.5	0.04	0.04	0.03	0.02	0.02	0.01	0.01	0.00	0.00	0.00
5.0	0.12	0.10	0.08	0.06	0.05	0.03	0.02	0.00	0.00	0.00
7.5	0.20	0.17	0.14	0.11	0.08	0.06	0.03	0.01	0.00	0.00
10.0	0.27	0.24	0.20	0.16	0.12	0.08	0.04	0.02	0.00	0.00
12.5	0.36	0.31	0.26	0.21	0.16	0.11	0.06	0.02	0.00	0.00
15.0	0.46	0.39	0.33	0.26	0.20	0.14	0.07	0.03	0.00	0.00
17.5	0.57	0.48	0.40	0.32	0.25	0.17	0.10	0.03	0.00	0.00
20.0	0.75	0.59	0.48	0.39	0.29	0.20	0.12	0.04	0.00	0.00
22.5	0.97	0.77	0.57	0.45	0.34	0.24	0.14	0.05	0.00	0.00
25.0	1.19	0.96	0.72	0.51	0.39	0.27	0.16	0.05	0.00	0.00
27.5	1.44	1.16	0.88	0.62	0.44	0.31	0.18	0.06	0.00	0.00
30.0	1.70	1.37	1.06	0.75	0.50	0.35	0.20	0.07	0.00	0.00
32.5	1.98	1.60	1.23	0.89	0.58	0.38	0.22	0.08	0.00	0.00
35.0	2.28	1.83	1.41	1.03	0.68	0.42	0.25	0.10	0.00	0.00
37.5	2.61	2.10	1.61	1.19	0.78	0.46	0.27	0.11	0.00	0.00
40.0	3.01	2.37	1.82	1.33	0.89	0.51	0.29	0.12	0.00	0.00
42.5	3.42	2.68	2.04	1.48	1.00	0.59	0.31	0.12	0.00	0.00
45.0	3.91	3.03	2.27	1.64	1.11	0.66	0.33	0.13	0.00	0.00
47.5	4.51	3.41	2.54	1.82	1.22	0.73	0.36	0.14	0.00	0.00
50.0	5.44	3.93	2.82	2.00	1.34	0.81	0.39	0.15	0.00	0.00
52.5	6.55	4.57	3.15	2.18	1.45	0.87	0.43	0.16	0.00	0.00
55.0	7.61	5.41	3.56	2.40	1.57	0.95	0.46	0.17	0.00	0.00
57.5	8.42	6.20	4.10	2.65	1.70	1.01	0.51	0.18	0.00	0.00
60.0	8.62	6.68	4.60	2.95	1.83	1.09	0.54	0.19	0.00	0.00
62.5	8.73	7.02	5.12	3.26	1.96	1.15	0.57	0.21	0.00	0.00
65.0	8.77	7.20	5.38	3.44	2.06	1.21	0.60	0.22	0.00	0.00
67.5	8.71	7.17	5.41	3.59	2.18	1.26	0.63	0.23	0.00	0.00
70.0	8.52	7.06	5.42	3.69	2.26	1.31	0.66	0.24	0.00	0.00
72.5	8.31	6.91	5.39	3.74	2.33	1.35	0.69	0.25	0.00	0.00
75.0	8.06	6.71	5.26	3.72	2.36	1.39	0.71	0.26	0.00	0.00
77.5	7.75	6.47	5.10	3.67	2.38	1.43	0.73	0.27	0.00	0.00
80.0	7.40	6.18	4.92	3.59	2.39	1.45	0.75	0.29	0.00	0.00

IES INDOOR REPORT
PHOTOMETRIC FILENAME : SPL-FT-1201-35WH.IES

CANDELA TABULATION - (Cont.)

82.5	7.04	5.89	4.73	3.48	2.36	1.45	0.77	0.29	0.00	0.00
85.0	6.68	5.61	4.53	3.38	2.34	1.45	0.76	0.29	0.00	0.00
87.5	6.31	5.31	4.32	3.25	2.27	1.43	0.77	0.29	0.00	0.00
90.0	5.91	4.98	4.08	3.11	2.20	1.40	0.76	0.29	0.00	0.00
92.5	5.60	4.73	3.88	2.98	2.13	1.37	0.75	0.29	0.00	0.00
95.0	5.26	4.47	3.66	2.83	2.06	1.35	0.74	0.30	0.00	0.00
97.5	4.91	4.19	3.44	2.69	1.96	1.30	0.74	0.30	0.00	0.00
100.0	4.65	3.97	3.25	2.56	1.88	1.26	0.71	0.30	0.00	0.00
102.5	4.39	3.75	3.10	2.44	1.80	1.21	0.69	0.29	0.00	0.00
105.0	4.14	3.55	2.94	2.32	1.72	1.17	0.67	0.28	0.00	0.00
107.5	3.93	3.35	2.77	2.20	1.64	1.11	0.65	0.27	0.00	0.00
110.0	3.73	3.19	2.65	2.10	1.56	1.06	0.62	0.26	0.00	0.00
112.5	3.55	3.03	2.52	2.00	1.51	1.03	0.60	0.26	0.00	0.00
115.0	3.36	2.87	2.39	1.90	1.43	0.98	0.58	0.25	0.00	0.00
117.5	3.19	2.73	2.26	1.80	1.36	0.94	0.56	0.24	0.00	0.00
120.0	3.02	2.60	2.15	1.72	1.29	0.89	0.53	0.23	0.00	0.00
122.5	2.85	2.46	2.04	1.63	1.23	0.85	0.52	0.22	0.00	0.00
125.0	2.70	2.32	1.92	1.53	1.16	0.80	0.50	0.22	0.00	0.00
127.5	2.54	2.18	1.81	1.45	1.09	0.76	0.49	0.21	0.00	0.00
130.0	2.39	2.05	1.71	1.36	1.03	0.72	0.47	0.20	0.00	0.00
132.5	2.23	1.92	1.59	1.28	0.96	0.68	0.45	0.19	0.00	0.00
135.0	2.08	1.80	1.49	1.19	0.90	0.65	0.43	0.18	0.00	0.00
137.5	1.94	1.66	1.39	1.11	0.83	0.63	0.41	0.16	0.00	0.00
140.0	1.79	1.54	1.28	1.02	0.78	0.60	0.39	0.15	0.00	0.00
142.5	1.65	1.42	1.18	0.95	0.73	0.57	0.35	0.14	0.00	0.00
145.0	1.51	1.29	1.08	0.86	0.71	0.53	0.33	0.13	0.00	0.00
147.5	1.37	1.18	0.97	0.79	0.67	0.49	0.30	0.11	0.00	0.00
150.0	1.23	1.06	0.89	0.75	0.63	0.46	0.27	0.10	0.00	0.00
152.5	1.10	0.94	0.81	0.72	0.57	0.41	0.25	0.09	0.00	0.00
155.0	0.96	0.84	0.77	0.66	0.51	0.36	0.22	0.07	0.00	0.00
157.5	0.86	0.79	0.71	0.59	0.45	0.32	0.19	0.07	0.00	0.00
160.0	0.80	0.73	0.63	0.51	0.40	0.28	0.17	0.05	0.00	0.00
162.5	0.72	0.64	0.54	0.44	0.34	0.24	0.13	0.03	0.00	0.00
165.0	0.61	0.53	0.45	0.37	0.28	0.19	0.11	0.03	0.00	0.00
167.5	0.49	0.43	0.36	0.29	0.22	0.14	0.07	0.02	0.00	0.00
170.0	0.37	0.32	0.27	0.21	0.16	0.10	0.04	0.02	0.00	0.00
172.5	0.25	0.22	0.18	0.14	0.09	0.06	0.03	0.01	0.00	0.00
175.0	0.14	0.11	0.09	0.07	0.04	0.02	0.01	0.00	0.00	0.00
177.5	0.03	0.02	0.02	0.01	0.01	0.01	0.01	0.00	0.00	0.00
180.0	0.00	0.00	0.00	0.00	0.00	0.00	0.00	0.00	0.00	0.00

Vert. Horizontal Angles

	<u>100</u>	<u>105</u>	<u>110</u>	<u>115</u>	<u>120</u>	<u>125</u>	<u>130</u>	<u>135</u>	<u>140</u>	<u>145</u>
0.0	0.00	0.00	0.00	0.00	0.00	0.00	0.00	0.00	0.00	0.00
2.5	0.00	0.00	0.00	0.00	0.00	0.00	0.00	0.00	0.00	0.00
5.0	0.00	0.00	0.00	0.00	0.00	0.00	0.00	0.00	0.00	0.00
7.5	0.00	0.00	0.00	0.00	0.00	0.00	0.00	0.00	0.00	0.00
10.0	0.00	0.00	0.00	0.00	0.00	0.00	0.00	0.00	0.00	0.00
12.5	0.00	0.00	0.00	0.00	0.00	0.00	0.00	0.00	0.00	0.00
15.0	0.00	0.00	0.00	0.00	0.00	0.00	0.00	0.00	0.00	0.00
17.5	0.00	0.00	0.00	0.00	0.00	0.00	0.00	0.00	0.00	0.00
20.0	0.00	0.00	0.00	0.00	0.00	0.00	0.00	0.00	0.00	0.00
22.5	0.00	0.00	0.00	0.00	0.00	0.00	0.00	0.00	0.00	0.00
25.0	0.00	0.00	0.00	0.00	0.00	0.00	0.00	0.00	0.00	0.00
27.5	0.00	0.00	0.00	0.00	0.00	0.00	0.00	0.00	0.00	0.00

IES INDOOR REPORT
PHOTOMETRIC FILENAME : SPL-FT-1201-35WH.IES

CANDELA TABULATION - (Cont.)

30.0	0.00	0.00	0.00	0.00	0.00	0.00	0.00	0.00	0.00	0.00
32.5	0.00	0.00	0.00	0.00	0.00	0.00	0.00	0.00	0.00	0.00
35.0	0.00	0.00	0.00	0.00	0.00	0.00	0.00	0.00	0.00	0.00
37.5	0.00	0.00	0.00	0.00	0.00	0.00	0.00	0.00	0.00	0.00
40.0	0.00	0.00	0.00	0.00	0.00	0.00	0.00	0.00	0.00	0.00
42.5	0.00	0.00	0.00	0.00	0.00	0.00	0.00	0.00	0.00	0.00
45.0	0.00	0.00	0.00	0.00	0.00	0.00	0.00	0.00	0.00	0.00
47.5	0.00	0.00	0.00	0.00	0.00	0.00	0.00	0.00	0.00	0.00
50.0	0.00	0.00	0.00	0.00	0.00	0.00	0.00	0.00	0.00	0.00
52.5	0.00	0.00	0.00	0.00	0.00	0.00	0.00	0.00	0.00	0.00
55.0	0.00	0.00	0.00	0.00	0.00	0.00	0.00	0.00	0.00	0.00
57.5	0.00	0.00	0.00	0.00	0.00	0.00	0.00	0.00	0.00	0.00
60.0	0.00	0.00	0.00	0.00	0.00	0.00	0.00	0.00	0.00	0.00
62.5	0.00	0.00	0.00	0.00	0.00	0.00	0.00	0.00	0.00	0.00
65.0	0.00	0.00	0.00	0.00	0.00	0.00	0.00	0.00	0.00	0.00
67.5	0.00	0.00	0.00	0.00	0.00	0.00	0.00	0.00	0.00	0.00
70.0	0.00	0.00	0.00	0.00	0.00	0.00	0.00	0.00	0.00	0.00
72.5	0.00	0.00	0.00	0.00	0.00	0.00	0.00	0.00	0.00	0.00
75.0	0.00	0.00	0.00	0.00	0.00	0.00	0.00	0.00	0.00	0.00
77.5	0.00	0.00	0.00	0.00	0.00	0.00	0.00	0.00	0.00	0.00
80.0	0.00	0.00	0.00	0.00	0.00	0.00	0.00	0.00	0.00	0.00
82.5	0.00	0.00	0.00	0.00	0.00	0.00	0.00	0.00	0.00	0.00
85.0	0.00	0.00	0.00	0.00	0.00	0.00	0.00	0.00	0.00	0.00
87.5	0.00	0.00	0.00	0.00	0.00	0.00	0.00	0.00	0.00	0.00
90.0	0.00	0.00	0.00	0.00	0.00	0.00	0.00	0.00	0.00	0.00
92.5	0.00	0.00	0.00	0.00	0.00	0.00	0.00	0.00	0.00	0.00
95.0	0.00	0.00	0.00	0.00	0.00	0.00	0.00	0.00	0.00	0.00
97.5	0.00	0.00	0.00	0.00	0.00	0.00	0.00	0.00	0.00	0.00
100.0	0.00	0.00	0.00	0.00	0.00	0.00	0.00	0.00	0.00	0.00
102.5	0.00	0.00	0.00	0.00	0.00	0.00	0.00	0.00	0.00	0.00
105.0	0.00	0.00	0.00	0.00	0.00	0.00	0.00	0.00	0.00	0.00
107.5	0.00	0.00	0.00	0.00	0.00	0.00	0.00	0.00	0.00	0.00
110.0	0.00	0.00	0.00	0.00	0.00	0.00	0.00	0.00	0.00	0.00
112.5	0.00	0.00	0.00	0.00	0.00	0.00	0.00	0.00	0.00	0.00
115.0	0.00	0.00	0.00	0.00	0.00	0.00	0.00	0.00	0.00	0.00
117.5	0.00	0.00	0.00	0.00	0.00	0.00	0.00	0.00	0.00	0.00
120.0	0.00	0.00	0.00	0.00	0.00	0.00	0.00	0.00	0.00	0.00
122.5	0.00	0.00	0.00	0.00	0.00	0.00	0.00	0.00	0.00	0.00
125.0	0.00	0.00	0.00	0.00	0.00	0.00	0.00	0.00	0.00	0.00
127.5	0.00	0.00	0.00	0.00	0.00	0.00	0.00	0.00	0.00	0.00
130.0	0.00	0.00	0.00	0.00	0.00	0.00	0.00	0.00	0.00	0.00
132.5	0.00	0.00	0.00	0.00	0.00	0.00	0.00	0.00	0.00	0.00
135.0	0.00	0.00	0.00	0.00	0.00	0.00	0.00	0.00	0.00	0.00
137.5	0.00	0.00	0.00	0.00	0.00	0.00	0.00	0.00	0.00	0.00
140.0	0.00	0.00	0.00	0.00	0.00	0.00	0.00	0.00	0.00	0.00
142.5	0.00	0.00	0.00	0.00	0.00	0.00	0.00	0.00	0.00	0.00
145.0	0.00	0.00	0.00	0.00	0.00	0.00	0.00	0.00	0.00	0.00
147.5	0.00	0.00	0.00	0.00	0.00	0.00	0.00	0.00	0.00	0.00
150.0	0.00	0.00	0.00	0.00	0.00	0.00	0.00	0.00	0.00	0.00
152.5	0.00	0.00	0.00	0.00	0.00	0.00	0.00	0.00	0.00	0.00
155.0	0.00	0.00	0.00	0.00	0.00	0.00	0.00	0.00	0.00	0.00
157.5	0.00	0.00	0.00	0.00	0.00	0.00	0.00	0.00	0.00	0.00
160.0	0.00	0.00	0.00	0.00	0.00	0.00	0.00	0.00	0.00	0.00
162.5	0.00	0.00	0.00	0.00	0.00	0.00	0.00	0.00	0.00	0.00
165.0	0.00	0.00	0.00	0.00	0.00	0.00	0.00	0.00	0.00	0.00
167.5	0.00	0.00	0.00	0.00	0.00	0.00	0.00	0.00	0.00	0.00

IES INDOOR REPORT
PHOTOMETRIC FILENAME : SPL-FT-1201-35WH.IES

CANDELA TABULATION - (Cont.)

170.0	0.00	0.00	0.00	0.00	0.00	0.00	0.00	0.00	0.00	0.00
172.5	0.00	0.00	0.00	0.00	0.00	0.00	0.00	0.00	0.00	0.00
175.0	0.00	0.00	0.00	0.00	0.00	0.00	0.00	0.00	0.00	0.00
177.5	0.00	0.00	0.00	0.00	0.00	0.00	0.00	0.00	0.00	0.00
180.0	0.00	0.00	0.00	0.00	0.00	0.00	0.00	0.00	0.00	0.00

Vert. Angles **Horizontal Angles**

	<u>150</u>	<u>155</u>	<u>160</u>	<u>165</u>	<u>170</u>	<u>175</u>	<u>180</u>
0.0	0.00	0.00	0.00	0.00	0.00	0.00	0.00
2.5	0.00	0.00	0.00	0.00	0.00	0.00	0.00
5.0	0.00	0.00	0.00	0.00	0.00	0.00	0.00
7.5	0.00	0.00	0.00	0.00	0.00	0.00	0.00
10.0	0.00	0.00	0.00	0.00	0.00	0.00	0.00
12.5	0.00	0.00	0.00	0.00	0.00	0.00	0.00
15.0	0.00	0.00	0.00	0.00	0.00	0.00	0.00
17.5	0.00	0.00	0.00	0.00	0.00	0.00	0.00
20.0	0.00	0.00	0.00	0.00	0.00	0.00	0.00
22.5	0.00	0.00	0.00	0.00	0.00	0.00	0.00
25.0	0.00	0.00	0.00	0.00	0.00	0.00	0.00
27.5	0.00	0.00	0.00	0.00	0.00	0.00	0.00
30.0	0.00	0.00	0.00	0.00	0.00	0.00	0.00
32.5	0.00	0.00	0.00	0.00	0.00	0.00	0.00
35.0	0.00	0.00	0.00	0.00	0.00	0.00	0.00
37.5	0.00	0.00	0.00	0.00	0.00	0.00	0.00
40.0	0.00	0.00	0.00	0.00	0.00	0.00	0.00
42.5	0.00	0.00	0.00	0.00	0.00	0.00	0.00
45.0	0.00	0.00	0.00	0.00	0.00	0.00	0.00
47.5	0.00	0.00	0.00	0.00	0.00	0.00	0.00
50.0	0.00	0.00	0.00	0.00	0.00	0.00	0.00
52.5	0.00	0.00	0.00	0.00	0.00	0.00	0.00
55.0	0.00	0.00	0.00	0.00	0.00	0.00	0.00
57.5	0.00	0.00	0.00	0.00	0.00	0.00	0.00
60.0	0.00	0.00	0.00	0.00	0.00	0.00	0.00
62.5	0.00	0.00	0.00	0.00	0.00	0.00	0.00
65.0	0.00	0.00	0.00	0.00	0.00	0.00	0.00
67.5	0.00	0.00	0.00	0.00	0.00	0.00	0.00
70.0	0.00	0.00	0.00	0.00	0.00	0.00	0.00
72.5	0.00	0.00	0.00	0.00	0.00	0.00	0.00
75.0	0.00	0.00	0.00	0.00	0.00	0.00	0.00
77.5	0.00	0.00	0.00	0.00	0.00	0.00	0.00
80.0	0.00	0.00	0.00	0.00	0.00	0.00	0.00
82.5	0.00	0.00	0.00	0.00	0.00	0.00	0.00
85.0	0.00	0.00	0.00	0.00	0.00	0.00	0.00
87.5	0.00	0.00	0.00	0.00	0.00	0.00	0.00
90.0	0.00	0.00	0.00	0.00	0.00	0.00	0.00
92.5	0.00	0.00	0.00	0.00	0.00	0.00	0.00
95.0	0.00	0.00	0.00	0.00	0.00	0.00	0.00
97.5	0.00	0.00	0.00	0.00	0.00	0.00	0.00
100.0	0.00	0.00	0.00	0.00	0.00	0.00	0.00
102.5	0.00	0.00	0.00	0.00	0.00	0.00	0.00
105.0	0.00	0.00	0.00	0.00	0.00	0.00	0.00
107.5	0.00	0.00	0.00	0.00	0.00	0.00	0.00
110.0	0.00	0.00	0.00	0.00	0.00	0.00	0.00
112.5	0.00	0.00	0.00	0.00	0.00	0.00	0.00
115.0	0.00	0.00	0.00	0.00	0.00	0.00	0.00

IES INDOOR REPORT
PHOTOMETRIC FILENAME : SPL-FT-1201-35WH.IES

CANDELA TABULATION - (Cont.)

117.5	0.00	0.00	0.00	0.00	0.00	0.00	0.00
120.0	0.00	0.00	0.00	0.00	0.00	0.00	0.00
122.5	0.00	0.00	0.00	0.00	0.00	0.00	0.00
125.0	0.00	0.00	0.00	0.00	0.00	0.00	0.00
127.5	0.00	0.00	0.00	0.00	0.00	0.00	0.00
130.0	0.00	0.00	0.00	0.00	0.00	0.00	0.00
132.5	0.00	0.00	0.00	0.00	0.00	0.00	0.00
135.0	0.00	0.00	0.00	0.00	0.00	0.00	0.00
137.5	0.00	0.00	0.00	0.00	0.00	0.00	0.00
140.0	0.00	0.00	0.00	0.00	0.00	0.00	0.00
142.5	0.00	0.00	0.00	0.00	0.00	0.00	0.00
145.0	0.00	0.00	0.00	0.00	0.00	0.00	0.00
147.5	0.00	0.00	0.00	0.00	0.00	0.00	0.00
150.0	0.00	0.00	0.00	0.00	0.00	0.00	0.00
152.5	0.00	0.00	0.00	0.00	0.00	0.00	0.00
155.0	0.00	0.00	0.00	0.00	0.00	0.00	0.00
157.5	0.00	0.00	0.00	0.00	0.00	0.00	0.00
160.0	0.00	0.00	0.00	0.00	0.00	0.00	0.00
162.5	0.00	0.00	0.00	0.00	0.00	0.00	0.00
165.0	0.00	0.00	0.00	0.00	0.00	0.00	0.00
167.5	0.00	0.00	0.00	0.00	0.00	0.00	0.00
170.0	0.00	0.00	0.00	0.00	0.00	0.00	0.00
172.5	0.00	0.00	0.00	0.00	0.00	0.00	0.00
175.0	0.00	0.00	0.00	0.00	0.00	0.00	0.00
177.5	0.00	0.00	0.00	0.00	0.00	0.00	0.00
180.0	0.00	0.00	0.00	0.00	0.00	0.00	0.00

IES INDOOR REPORT
PHOTOMETRIC FILENAME : SPL-FT-1201-35WH.IES

ZONAL LUMEN SUMMARY

Zone	Lumens	%Lamp	%Fixt
0-20	0.09	N.A.	0.30
0-30	0.44	N.A.	1.40
0-40	1.44	N.A.	4.60
0-60	8.12	N.A.	26.10
0-80	17.16	N.A.	55.10
0-90	21.01	N.A.	67.40
10-90	21.00	N.A.	67.40
20-40	1.35	N.A.	4.30
20-50	3.99	N.A.	12.80
40-70	11.27	N.A.	36.20
60-80	9.04	N.A.	29.00
70-80	4.45	N.A.	14.30
80-90	3.85	N.A.	12.40
90-110	5.42	N.A.	17.40
90-120	7.19	N.A.	23.10
90-130	8.47	N.A.	27.20
90-150	9.82	N.A.	31.50
90-180	10.16	N.A.	32.60
110-180	4.74	N.A.	15.20
0-180	31.17	N.A.	100.00

Total Luminaire Efficiency = N.A.%

ZONAL LUMEN SUMMARY

Zone	Lumens
0-10	0.01
10-20	0.09
20-30	0.35
30-40	1.00
40-50	2.64
50-60	4.04
60-70	4.59
70-80	4.45
80-90	3.85
90-100	3.07
100-110	2.35
110-120	1.77
120-130	1.28
130-140	0.85
140-150	0.50
150-160	0.24
160-170	0.08
170-180	0.01

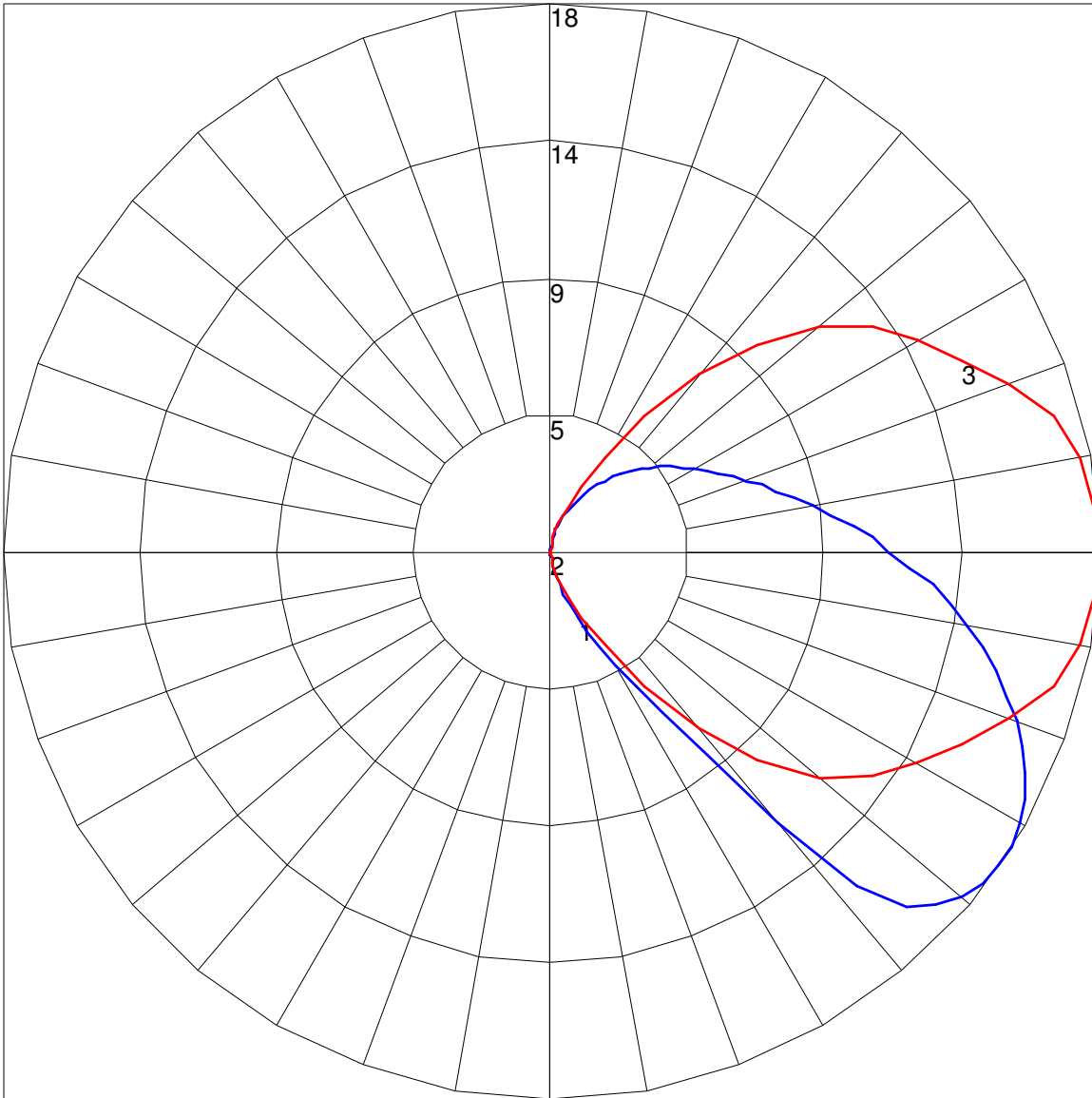
IES INDOOR REPORT
PHOTOMETRIC FILENAME : SPL-FT-1201-35WH.IES

COEFFICIENTS OF UTILIZATION - ZONAL CAVITY METHOD

Effective Floor Cavity Reflectance 0.20

RC	80				70				50			30			10			0
RW	70	50	30	10	70	50	30	10	50	30	10	50	30	10	50	30	10	0
0	112	112	112	112	105	105	105	105	94	94	94	83	83	83	72	72	72	68
1	95	88	81	75	89	82	76	70	71	67	62	62	58	54	53	50	47	42
2	83	72	62	54	77	67	58	51	58	51	45	49	44	39	42	37	33	29
3	74	60	50	41	68	56	46	39	48	40	34	41	34	29	34	29	24	20
4	66	51	40	32	61	48	38	30	41	33	26	34	28	22	28	23	18	15
5	60	44	34	26	55	41	31	24	35	27	21	30	23	17	24	19	14	11
6	54	39	28	21	50	36	27	20	31	23	17	26	19	14	21	16	11	8
7	50	34	24	17	46	32	23	16	27	20	14	23	16	12	19	13	9	6
8	46	31	21	15	42	29	20	14	25	17	12	21	14	10	17	12	8	5
9	42	28	19	13	39	26	17	12	22	15	10	19	13	8	15	10	6	4
10	40	25	17	11	37	23	15	10	20	13	8	17	11	7	14	9	5	3

POLAR GRAPH



Maximum Candela = 18.04 Located At Horizontal Angle = 0, Vertical Angle = 55

1 - Vertical Plane Through Horizontal Angles (0 - 180) (Through Max. Cd.)

2 - Vertical Plane Through Horizontal Angles (90 - 270)

3 - Horizontal Cone Through Vertical Angle (55) (Through Max. Cd.)