

FrostFire ARC™

Frostfire Arc™ represents a family of fabrics composed of modified acrylic fiber (with permanent **flame retardant** [FR] qualities), long staple **cotton** (comfort) and **nylon** (abrasion resistance). An added benefit of blending cotton with modacrylic yarn is the resulting synergistic effect that takes place between the fibers, allowing the LOI (limiting oxygen index) to improve. The overall FR performance is enhanced.

Our proprietary custom blends provide a level of comfort, softness, air circulation and Moisture management not typically found with protective fabrics.



SWATCH GOES HERE

FrostFire ARC™

Frost Fire ARC™

Style #7274

55% Modacrylic, 35% Cotton, 10% Nylon
Interlock 7.3 oz. / per square yard



Method	Characteristics	Performance
Vertical Flame ASTM D-6413	Afterflame/Warp	0.0
	Afterflame /Fill	0.0
	Afterglow/Warp	7.2
	Afterglow/Fill	6.6
	Char Length/Warp	4.7
	Char Length/Fill	5.2
	Melt/Drip Visual	None
Burst Strength ASTM D-3787	Test to Failure	70
Colorfastness to Croaking AATCC-8	Dry	5.0
	Wet	5.0
Shrinkage AATCC-135	Warp	1.0
	Fill	4.1
Weight ASTM D-3776	OSY	5.0
Thickness ASTM D-1777	Thickness	0.016
Wicking ASTM D-1776	Wicking (inches)	6.2
Antimicrobial ASTM D-2149-01	Initial Growth Inhibition	90%
	Growth Inhibition after 20 HL	75%
Pilling ASTM D-3512	Degree of Pilling (1-5)	5.0
NFPA 70E	Calorie	10.4

NEXTEC APPLICATIONS, INC.

North American Headquarters

165 West Putnam Ave.
Greenwich, CT 06831
Ph: 203-422-0590
nextecsquires@optonline.net
www.nextec.com

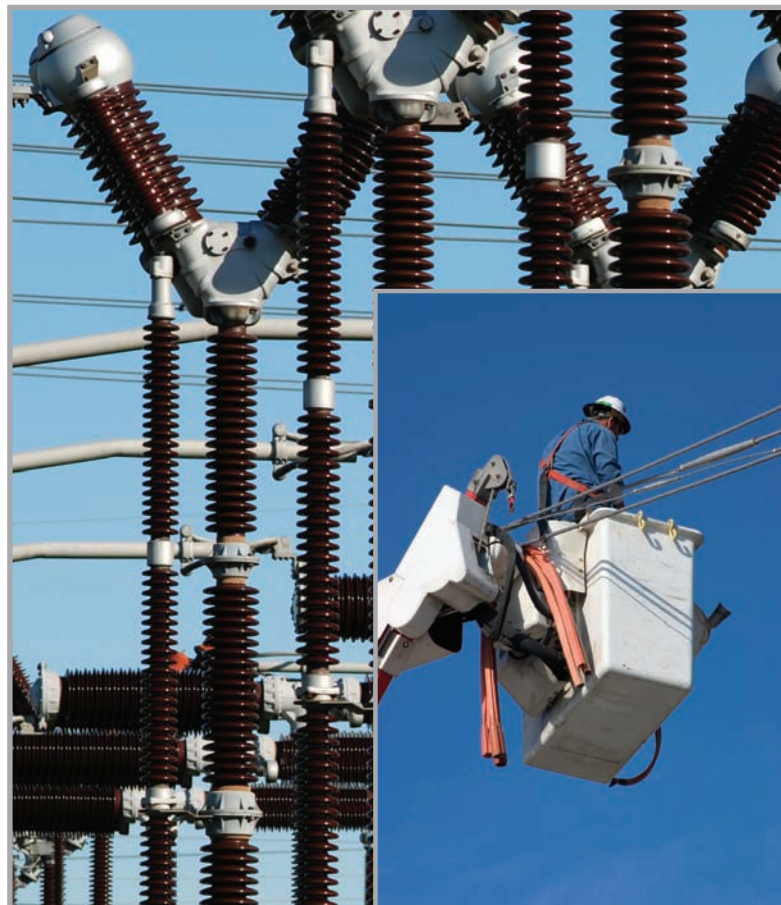
WWW.NEXTEC.COM

The information in this brochure is based on testing conducted by or on behalf of Nextec Applications, Inc. and represents our analysis of the test results. It is not intended as a substitute for any testing that may be unique and necessary for your facility for you to determine the suitability of our products for your particular purpose. Since we cannot anticipate all variations in end user conditions, Nextec Applications, Inc. makes no warranties and assumes no liability whatsoever in connection with any use of this information. All test results reported are based on standard laboratory tests related to exposure to arcs, flames, and heat. The results reported should not be used to predict garment performance in actual fire situations. Consult with the fabric supplier, garment manufacturer, and launderer for recommendations of proper cleaning techniques.

FrostFire ARC™

Frostfire Arc™ represents a family of fabrics composed of modified acrylic fiber (with permanent **flame retardant** [FR] qualities), long staple **cotton** (comfort) and **nylon** (abrasion resistance). An added benefit of blending cotton with modacrylic yarn is the resulting synergistic effect that takes place between the fibers, allowing the LOI (limiting oxygen index) to improve. The overall FR performance is enhanced.

Our proprietary custom blends provide a level of comfort, softness, air circulation and Moisture management not typically found with protective fabrics.



SWATCH GOES HERE

FrostFire ARC™

FROSTFIRE ARC™ Style #7275 55% Modacrylic, 35% Cotton, 10% Nylon Jersey 5.0 oz. / per square yard		
Method	Characteristics	
Vertical Flame ASTM D-6413	Afterflame/Warp	0.0
	Afterflame /Fill	0.0
	Afterglow/Warp	0.5
	Afterglow/Fill	0.5
	Char Length/Warp	4.4
	Char Length/Fill	3.3
	Melt/Drip Visual	None
Burst Strength ASTM D-3787	Test to Failure	60
Colorfastness to Crocking AATCC-8	Dry	4.0
	Wet	4.0
Shrinkage AATCC-135	Warp	6.0
	Fill	6.0
Weight ASTM D-3776	OSY	+/- 5%
Thickness ASTM D-1777	Thickness	0.016
Wicking ASTM D-1776	Wicking (inches)	5.0
Antimicrobial ASTM D-2149-01	Initial Growth Inhibition	90%
	Growth Inhibition after 20 HL	75%
Pilling ASTM D-3512	Degree of Pilling (1-5)	5.0
Stationwear/Workwear NFPA 1975	After heat at 500° without restoration	PASS
	Calorie	5.5

NEXTEC APPLICATIONS, INC.

North American Headquarters
 165 West Putnam Ave.
 Greenwich, CT 06831
 Ph: 203-422-0590
nextecquires@optonline.net
www.nextec.com

WWW.NEXTEC.COM

The information in this brochure is based on testing conducted by or on behalf of Nextec Applications, Inc. and represents our analysis of the test results. It is not intended as a substitute for any testing that may be unique and necessary for your facility for you to determine the suitability of our products for your particular purpose. Since we cannot anticipate all variations in end user conditions, Nextec Applications, Inc. makes no warranties and assumes no liability whatsoever in connection with any use of this information. All test results reported are based on standard laboratory tests related to exposure to arcs, flames, and heat. The results reported should not be used to predict garment performance in actual fire situations. Consult with the fabric supplier, garment manufacturer, and launderer for recommendations of proper cleaning techniques.