

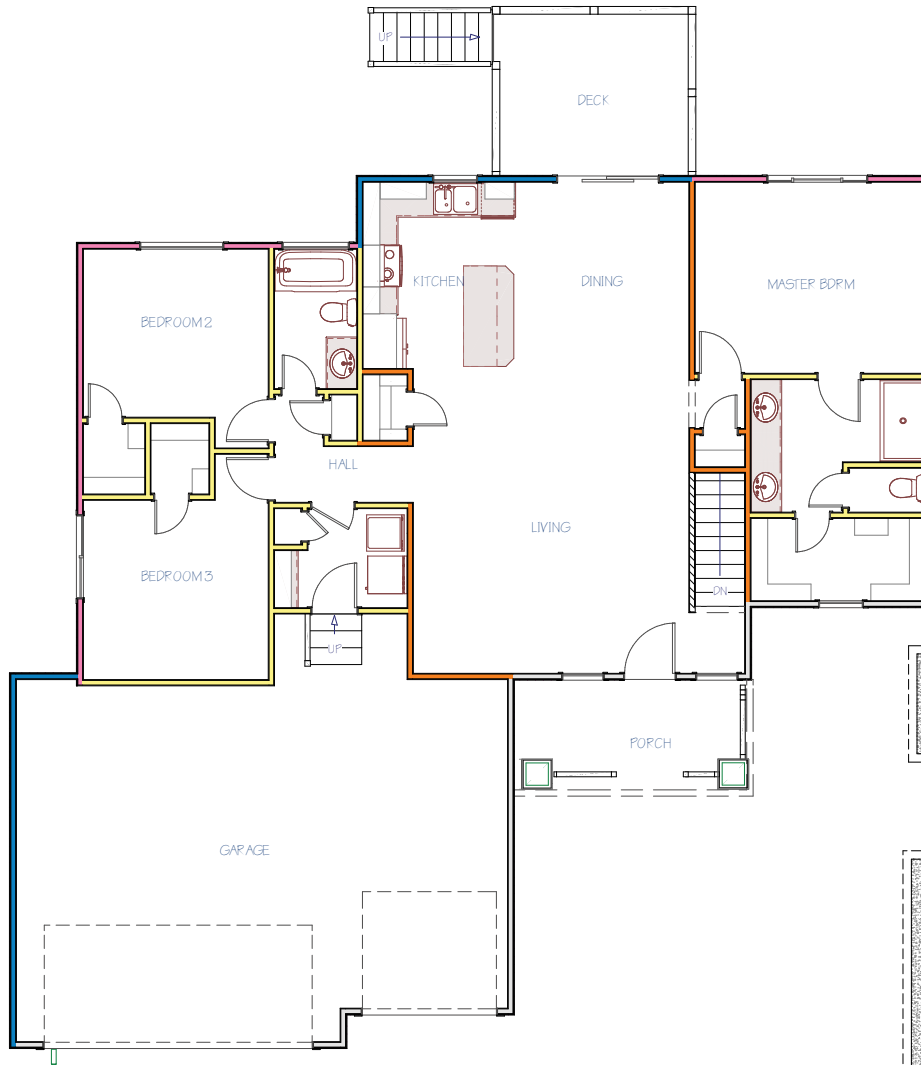
ROSEWOOD
PLAN

MAIN FLOOR

1,396
SQ. FT.

3
BEDROOMS

2
BATHROOMS

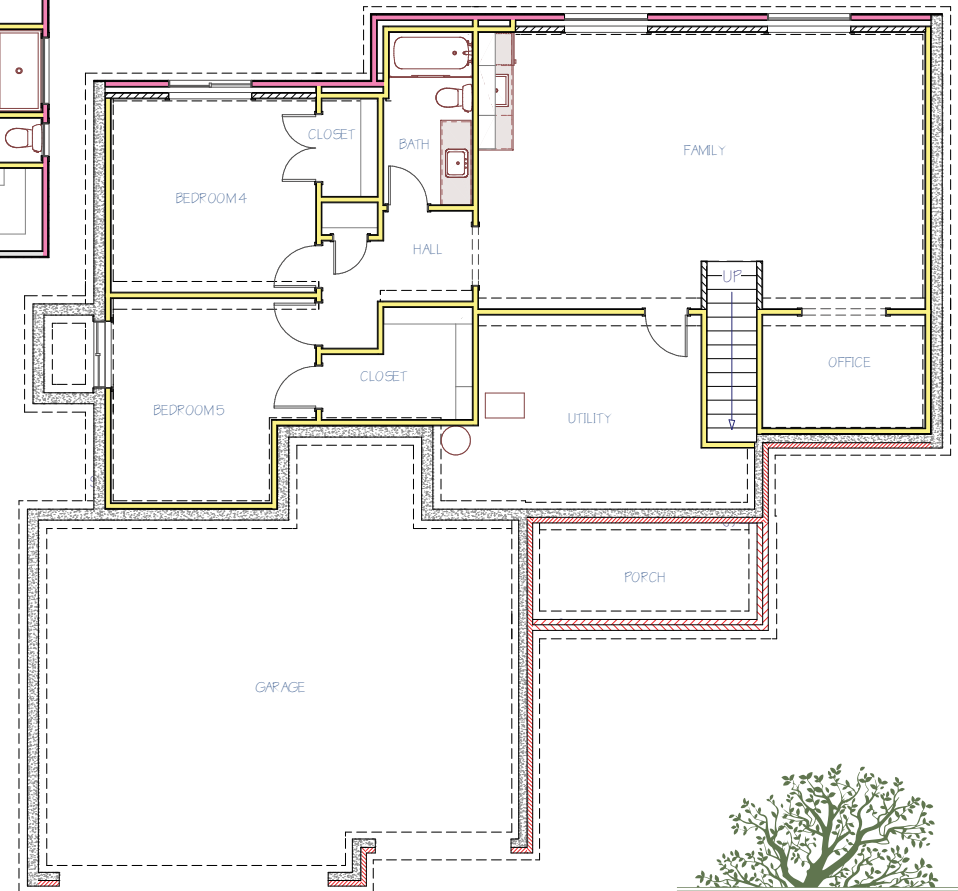


POSSIBLE BASEMENT

1,078
FINISHED SQ. FT.

2
BEDROOMS

1
BATHROOM



MILLERFAMILYHOMES.COM

Disclaimer: Please note the floor plan is for illustrative purposes and is to be used as a guide only. The illustrations may include upgrades and optional features. Final square feet, bedrooms and bathrooms may vary from what is indicated here.

ROSEWOOD ARCHITECTURAL STYLES

TRADITIONAL



FEATURES

- Open Floor Plan & 10 ft. Ceilings in Main Living Area
- Kitchen Features a Large Island & Walk-In Pantry
- Kitchen Sink Window Overlooks Back Yard
- Large Master Suite Boasts a Walk-In Shower, Private Commode and Large Walk-In Closet
- A Walk-In Closet in Every Bedroom
- Dedicated Storage Spaces Throughout
- Multiple Healthy Home & Smart Home Features
- 1-Year Builder Warranty

CRAFTSMAN



AVAILABLE IN

- Clear Creek
- Village Estates



MILLERFAMILYHOMES.COM

**CHECK OUR WEBSITE FOR NEW
ARCHITECTURAL STYLES
AND MORE FLOOR PLAN INFO**

Disclaimer: Please note the floor plan is for illustrative purposes and is to be used as a guide only. The illustrations may include upgrades and optional features. Final square feet, bedrooms and bathrooms may vary from what is indicated here.