

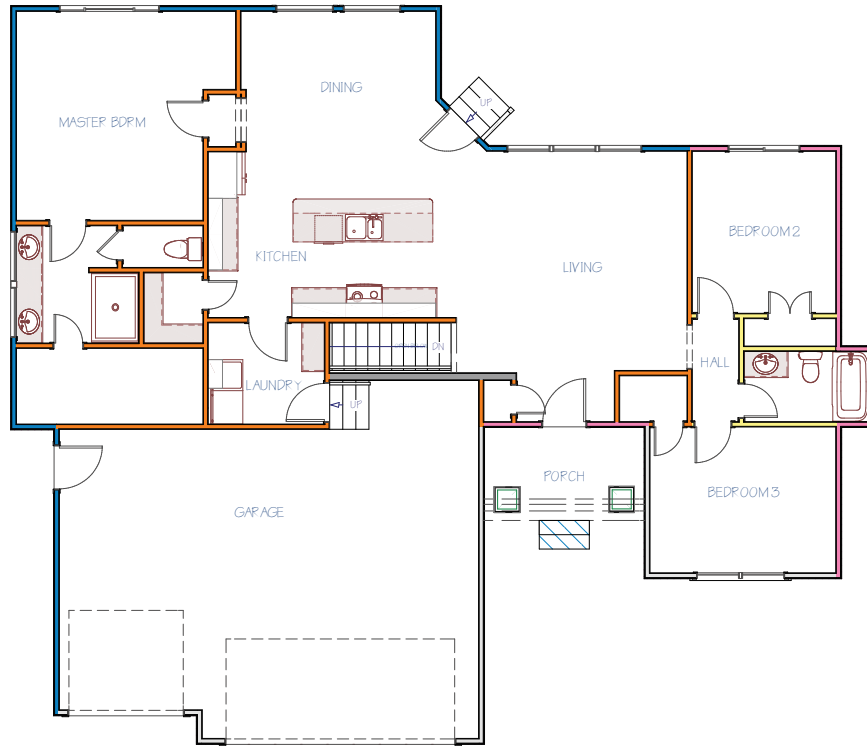
# PRESCOTT PLAN

## MAIN FLOOR

**1,576**  
SQ. FT.

**3**  
BEDROOMS

**2**  
BATHROOMS

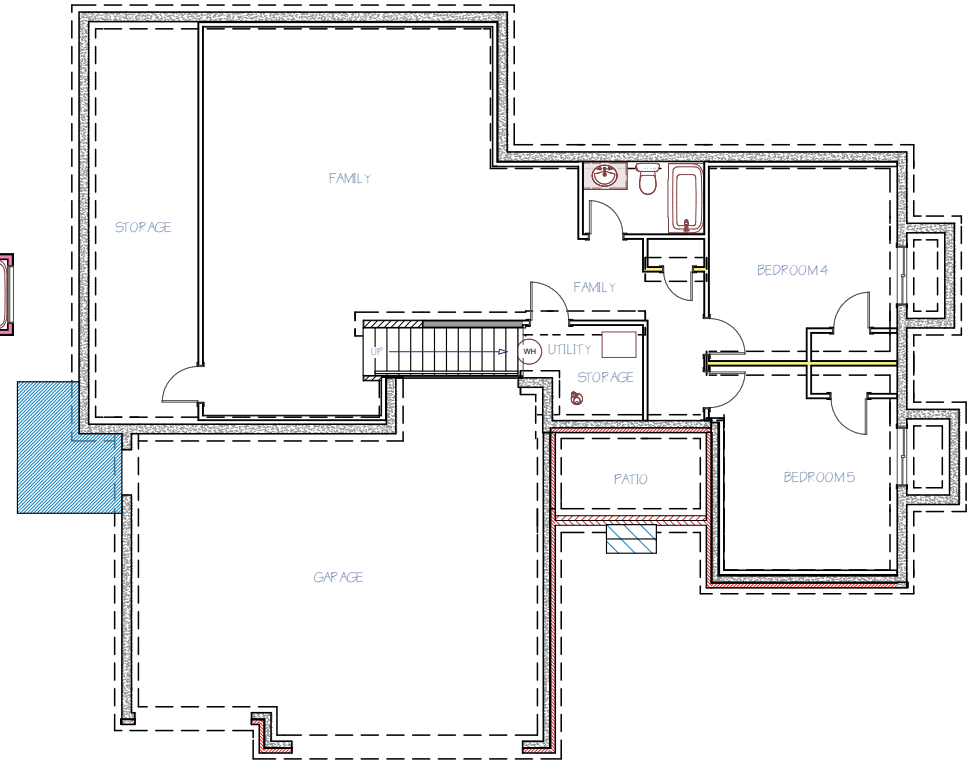


## POSSIBLE BASEMENT

**1,104**  
FINISHED SQ. FT.

**2**  
BEDROOMS

**1**  
BATHROOM



### OPTIONAL SUITE



### FEATURES

- Open Floor Plan
- 10 ft. Ceilings in Main Living & Master Suite
- Stainless Steel Appliances
- Large Walk-In Pantry
- Walk-In Master Closet with Off-Season Storage
- Optional Master Bathroom Layout & Shower
- Dedicated Drop Zone
- Large Storage Room in the Basement
- Multiple Healthy Home & Smart Home Features
- 1-Year Builder Warranty

Disclaimer: Please note the floor plan is for illustrative purposes and is to be used as a guide only. The illustrations may include upgrades and optional features. Final square feet, bedrooms and bathrooms may vary from what is indicated here.

# PRESCOTT ELEVATION OPTIONS

ELEVATION OPTION A



ELEVATION OPTION B



ELEVATION OPTION C



ELEVATION OPTION D



AVAILABLE IN

- Clear Creek
- Southern Ridge

**CHECK OUR WEBSITE FOR NEW ARCHITECTURAL STYLES & MORE FLOOR PLAN INFO**



MILLERFAMILYHOMES.COM

Disclaimer: Please note the floor plan is for illustrative purposes and is to be used as a guide only. The illustrations may include upgrades and optional features. Final square feet, bedrooms and bathrooms may vary from what is indicated here.