

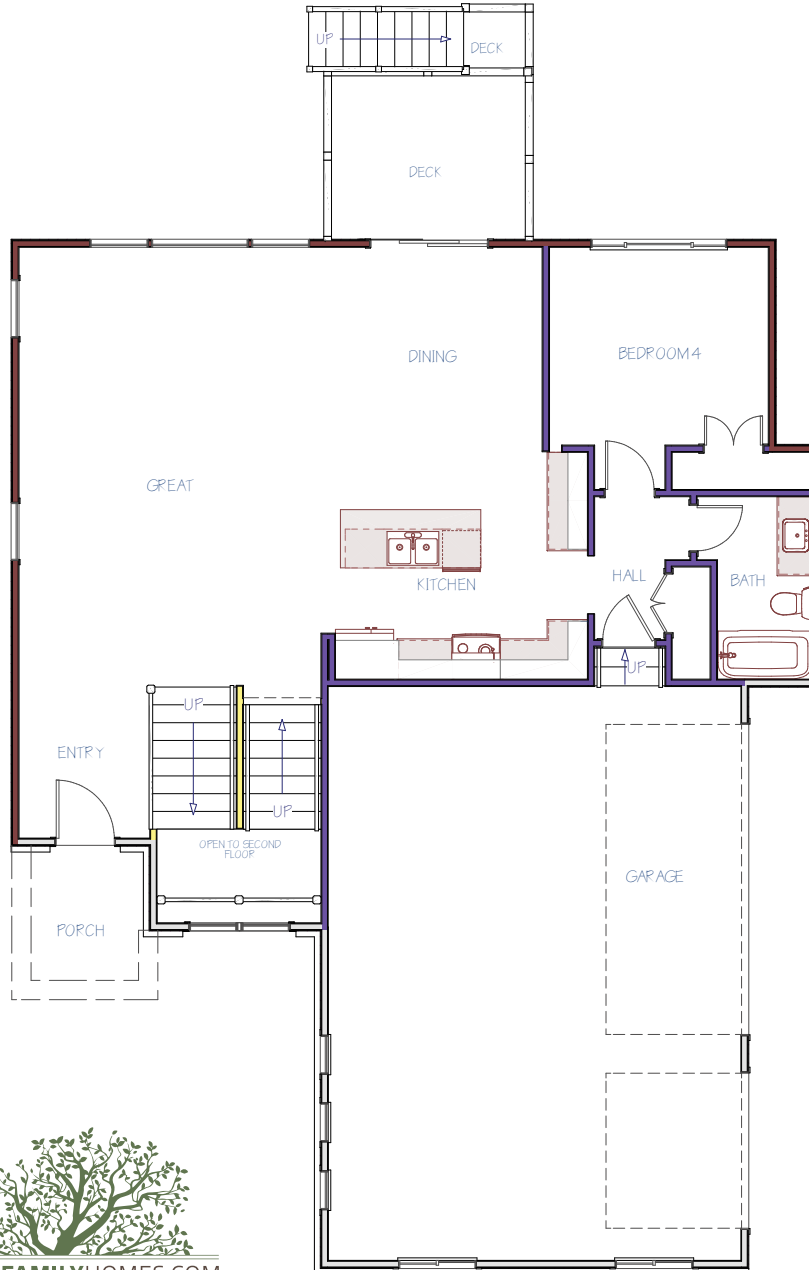
LEAWOOD PLUS SIDE-ENTRY  
PLAN

MAIN FLOOR

1,086  
SQ. FT.

1  
BEDROOM

1  
BATHROOM

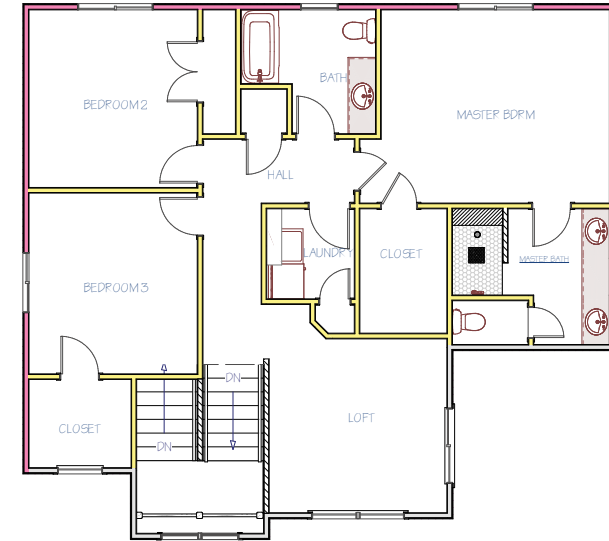


2ND FLOOR

1,212  
SQ. FT.

3  
BEDROOMS

2  
BATHROOMS

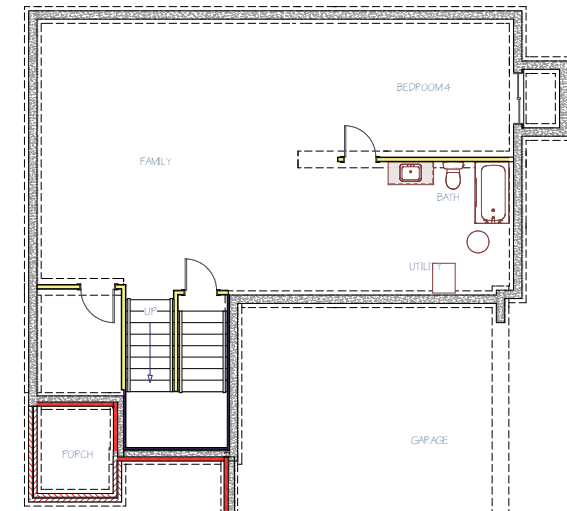


POSSIBLE BASEMENT

917  
FINISHED SQ. FT.

1  
BEDROOM

1  
BATHROOM



Disclaimer: Please note the floor plan is for illustrative purposes and is to be used as a guide only. The illustrations may include upgrades and optional features. Final square feet, bedrooms and bathrooms may vary from what is indicated here.

# LEAWOOD PLUS SIDE-ENTRY ELEVATION

## ELEVATION



## FEATURES

- Unique Sprawling Open-Concept Two Story Plan
- Massive Great Room With Beautiful Windowed Staircase Feature
- One Bedroom & Full Bathroom on the Main Floor
- Additional Family Room or Flexible Space With The Upstairs Loft
- Laundry Room On 2nd Floor With Main Bedrooms
- Large Master Suite Complete with a Luxury Master Bathroom & Walk-In Closet
- Dedicated Storage Spaces Throughout
- Potential Third Living Space In The Basement
- Zoned Multi-Level Accommodating HVAC System
- Multiple Healthy Home & Smart Home Features
- 1-Year Builder Warranty

## AVAILABLE IN

- Clear Creek
- Southern Ridge



[MILLERFAMILYHOMES.COM](http://MILLERFAMILYHOMES.COM)

**CHECK OUR WEBSITE FOR NEW  
ARCHITECTURAL STYLES  
AND MORE FLOOR PLAN INFO**

Disclaimer: Please note the floor plan is for illustrative purposes and is to be used as a guide only. The illustrations may include upgrades and optional features. Final square feet, bedrooms and bathrooms may vary from what is indicated here.