

Welcome Home!



*Designer Series Home*  
+ Included Luxury Options



710 S. Clear Creek St.  
Wichita, KS 67230



STOCKTON

Floor Plan

3

Bedrooms

2

Bathrooms

3

Car Garage

1,660

Total Finished Sq.Ft.

### *Why You Will Love This Home*

- Irrigation Well, Sprinkler System & Sod
- Composite Deck and a 10' x 10' Walk Out Patio
- Granite & Quartz Countertops
- Wood Laminate in Entry, Living, Dining & Kitchen
- Designer Touches Throughout Like Decorative Painted Beams, Open Railing, Luxury Lighting Package and More
- Luxury Kitchen Cabinets, Appliances & Finishes + Walk-In Pantry
- The Suite Features a Walk-In Shower, Designer Finishes and a Walk-In Master Closet with Off-Season Storage
- Unfinished Walk-Out Basement with a Wet Bar Rough-In
- Features: Energy Efficient Pella® Windows, Honeywell® Wi-Fi Thermostat, Chamberlain® myQ® Smart Garage Door Opener, 92% Energy Efficient Furnace with Better Indoor Air Quality & a Cooktop Vented to the Outside
- 1-Year Builder Warranty

### *Community Benefits*

- Community Pool
- Walking Paths
- Established Trees
- Large Stocked Ponds
- East Wichita Shopping
- Convenient Location

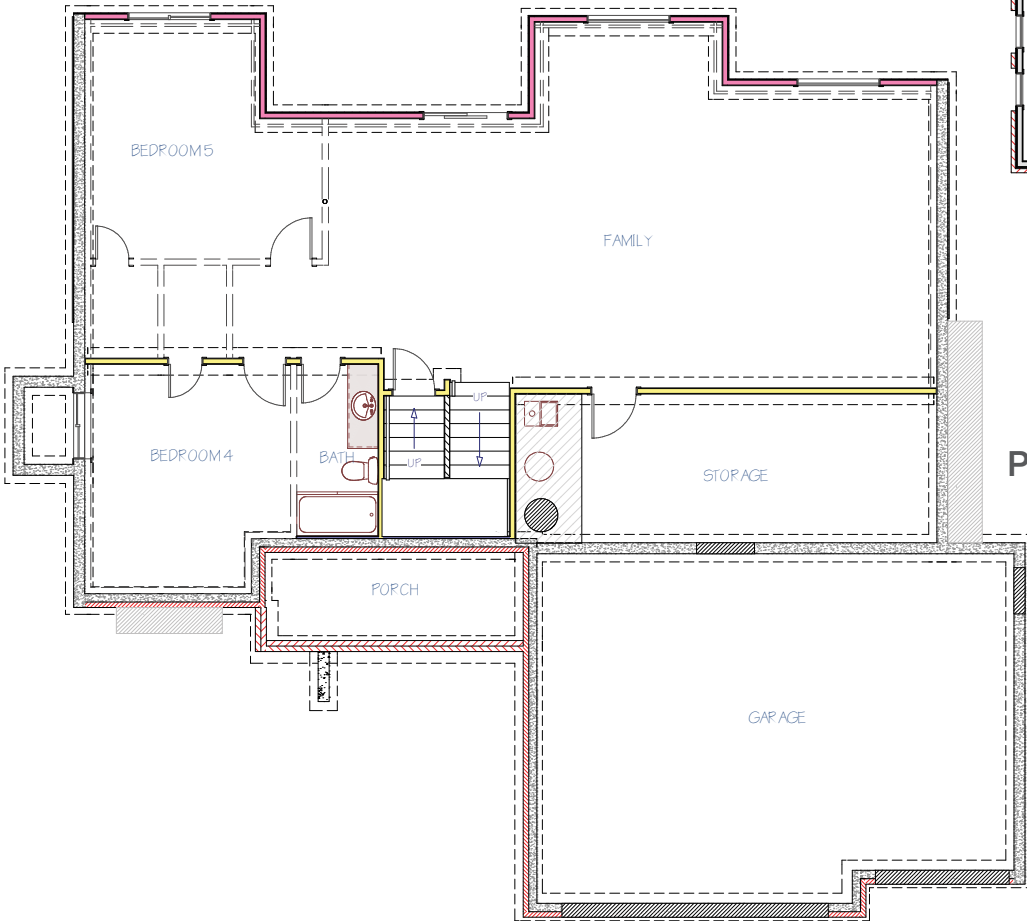


Contact Your New Home Specialist To Learn More: *Jon Nevarez* • (316) 347.3687 • [Jon@MillerFamilyHomes.com](mailto:Jon@MillerFamilyHomes.com)

# THE STOCKTON Floor Plan

## MAIN FLOOR LAYOUT

1,660  
Main Floor Sq.Ft.



## POSSIBLE BASEMENT LAYOUT

1,271  
Unfinished Walk-Out  
Basement Sq.Ft.

Disclaimer: The information contained herein is deemed reliable but cannot be guaranteed as to its accuracy. Current prices may change without notice and differ from what is indicated here. Floor plans, photos and graphics are for illustrative purposes and are only intended to be used as a guide. Illustrations may include upgrades and optional features. All information including square footage, bedrooms, bathroom and dimensions may vary from what is indicated here. We recommend to the buyer that any information of special interest, should be obtained through independent verification.

*Jon Nevarez*  
NEW HOME SPECIALIST

C | (316) 670.9736

Jon@MillerFamilyHomes.com

