

Welcome Home!



Designer Series Home
+ Included Luxury Options



633 S. Clear Creek St.
Wichita, KS 67230



MENDOZA

Floor Plan

4

Bedrooms

2.5

Bathrooms

3

Car Garage

1,938

Total Finished Sq.Ft.

Why You Will Love This Home

- Irrigation Well, Sprinkler System & Sod
- Enhanced Outdoor Living w/ Covered Composite Deck
- Unfinished Daylight Basement w/ Wet Bar Rough In
- Quartz Countertops Throughout
- Wood Laminate in Entry, Living, Dining & Kitchen
- Designer Touches Throughout Including Open Rail, Luxury Lighting, Dedicated Drop Zone and More
- Luxury Kitchen Cabinets, Appliances & Finishes
- Designer Master Suite Features a Walk-In Shower & Walk-In Closet
- Gorgeous Farmhouse Architectural Style & Design Details
- Features: Energy Efficient Pella® Windows, Honeywell® Wi-Fi Thermostat, Chamberlain® myQ® Smart Garage Door Opener, Better Indoor Air Quality & a Cooktop Vented to the Outside
- 1-Year Builder Warranty

Community Benefits

- Community Pool
- Walking Paths
- Established Trees
- Large Stocked Ponds
- East Wichita Shopping
- Convenient Location

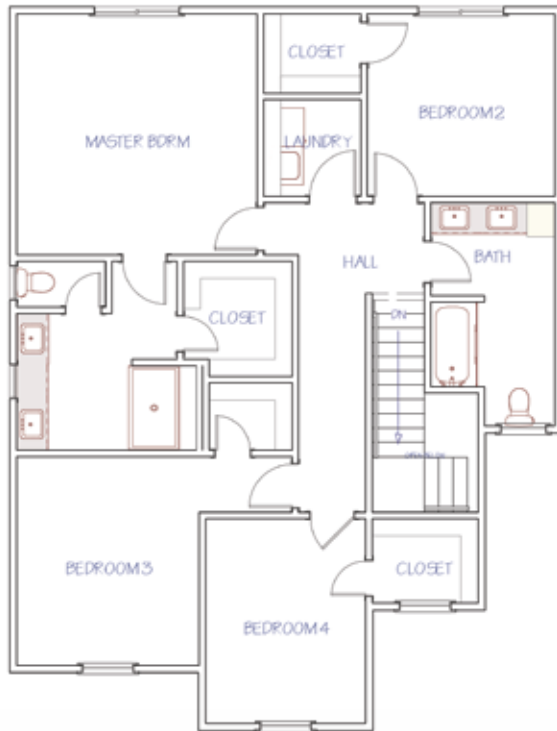


Contact Your New Home Specialist To Learn More: *Jon Nevarez* • (316) 347.3687 • Jon@MillerFamilyHomes.com

2ND FLOOR LAYOUT

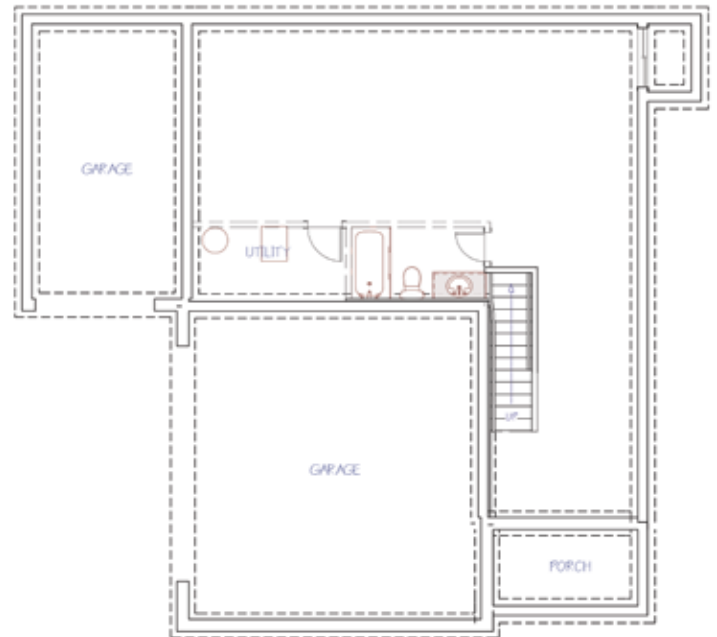
1,168

2nd Floor Sq.Ft.



THE MENDOZA

Floor Plan



POSSIBLE BASEMENT LAYOUT

631

Possible Finished Basement Sq.Ft.
Family Room or An Additional Bedroom
Additional Bathroom



MAIN FLOOR LAYOUT

770

Main Floor Sq.Ft.

Disclaimer: The information contained herein is deemed reliable but cannot be guaranteed as to its accuracy. Current prices may change without notice and differ from what is indicated here. Floor plans, photos and graphics are for illustrative purposes and are only intended to be used as a guide. Illustrations may include upgrades and optional features. All information including square footage, bedrooms, bathroom and dimensions may vary from what is indicated here. We recommend to the buyer that any information of special interest, should be obtained through independent verification.

Jon Nevarez
NEW HOME SPECIALIST

C | (316) 670.9736

Jon@MillerFamilyHomes.com

