

Welcome Home!



*Designer Series Home*  
+ Included Luxury Options



2736 S. Prescott Ct.  
Wichita, KS 67215



MENDOZA  
Floor Plan

4  
Bedrooms

2.5  
Bathrooms

3  
Car Garage

1,938  
Total Finished Sq.Ft.

### *Why You Will Love This Home*

- Irrigation Well, Sprinkler System & Sod
- Enhanced Outdoor Living w/ Covered Composite Deck
- Quartz Countertops Throughout
- Wood Laminate in Entry, Living, Dining & Kitchen
- Luxury Kitchen Appliances, Cabinets, Features and Finishes
- Designer Master Suite Features a Walk-In Tile Shower, Private Commode, Walk-In Closet & Luxury Finishes
- Dedicated Drop Zone
- Every Bedroom Features a Walk-In Closet
- Features: Energy Efficient Pella® Windows, Honeywell® Wi-Fi Thermostat, Chamberlain® myQ® Smart Garage Door Opener, Better Indoor Air Quality & a Cooktop Vented to the Outside
- Unfinished View-Out Basement
- 1-Year Builder Warranty

### *The Community Features:*

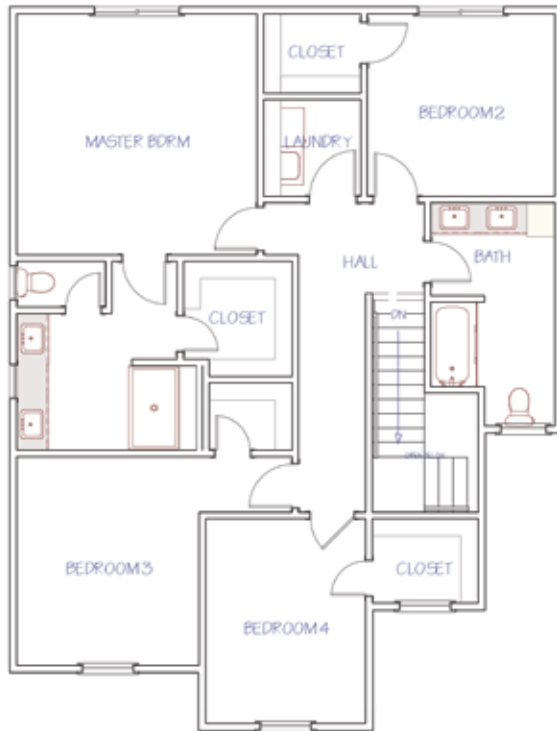
- Salt Water Swimming Pool
- Playground
- Large Stocked Pond
- Goddard Schools
- West Wichita Shopping
- Convenient Location



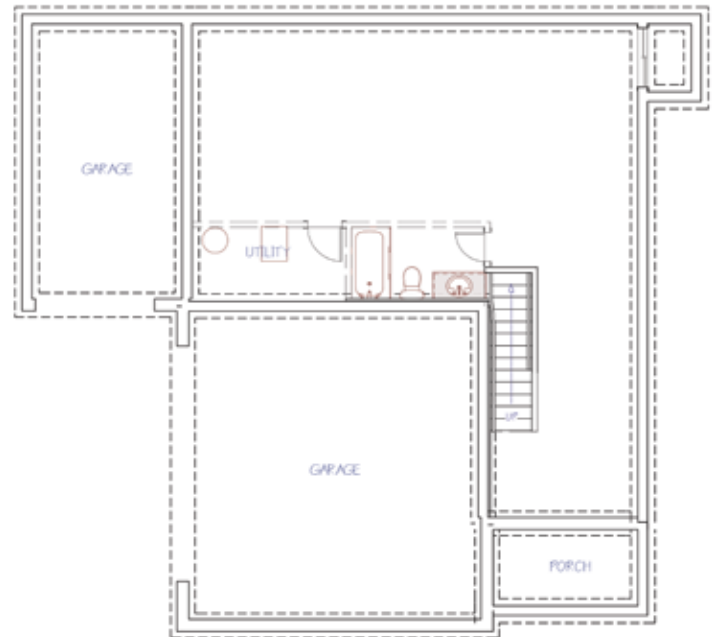
## 2ND FLOOR LAYOUT

# 1,168

2nd Floor Sq.Ft.



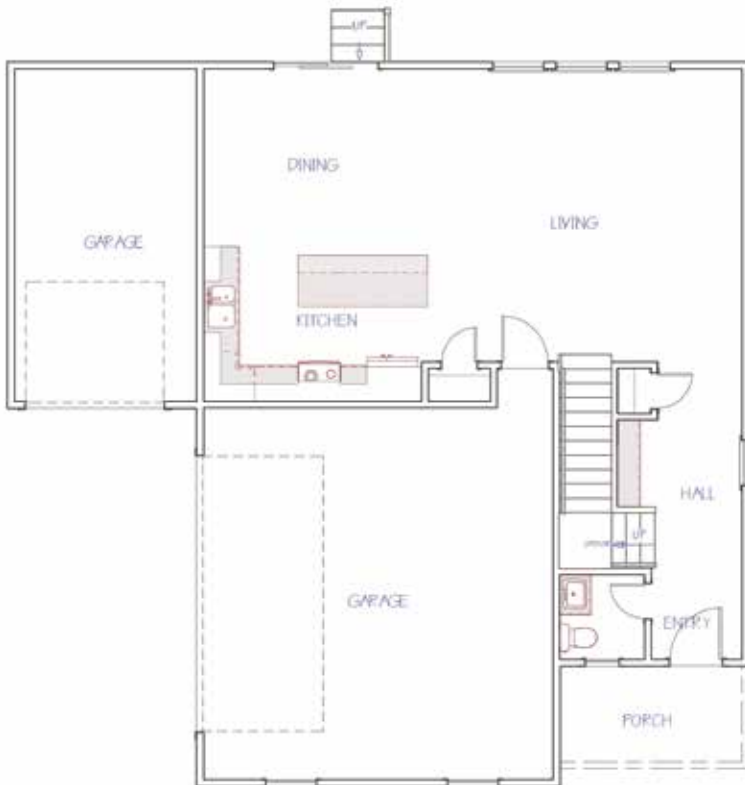
## THE MENDOZA *Floor Plan*



## POSSIBLE BASEMENT LAYOUT

# 631

Possible Finished Basement Sq.Ft.  
Family Room or An Additional Bedroom  
Additional Bathroom



## MAIN FLOOR LAYOUT

# 770

Main Floor Sq.Ft.

Disclaimer: The information contained herein is deemed reliable but cannot be guaranteed as to its accuracy. Current prices may change without notice and differ from what is indicated here. Floor plans, photos and graphics are for illustrative purposes and are only intended to be used as a guide. Illustrations may include upgrades and optional features. All information including square footage, bedrooms, bathroom and dimensions may vary from what is indicated here. We recommend to the buyer that any information of special interest, should be obtained through independent verification.

*Scott Darrenkamp*  
NEW HOME SPECIALIST

C | (316) 250.4122

ScottD@MillerFamilyHomes.com

